

ACART



Specification Guide
ParWall



Table of Contents

| | |
|--|-----------|
| Freestanding | 3 |
| Kits | 4 |
| Individual Frame Components | 5 |
| Storage Components and Accessories | 6 |
| Louvered Panel | 7 |
| Panels / Brackets | 7 |
| Accessories | 8 |
| Lean Wall | 9 |
| Kits | 9 |
| Individual Wall Strips | 10 |
| Brackets / Accessories | 11 |
| Storage Components for Par Wall Platforms | 12 |
| Shelves and Frames for Lean Wall | 12 |
| Baskets / Dividers | 13 |
| Label Holders | 14 |
| Inteli-Flip Flipper | 15 |

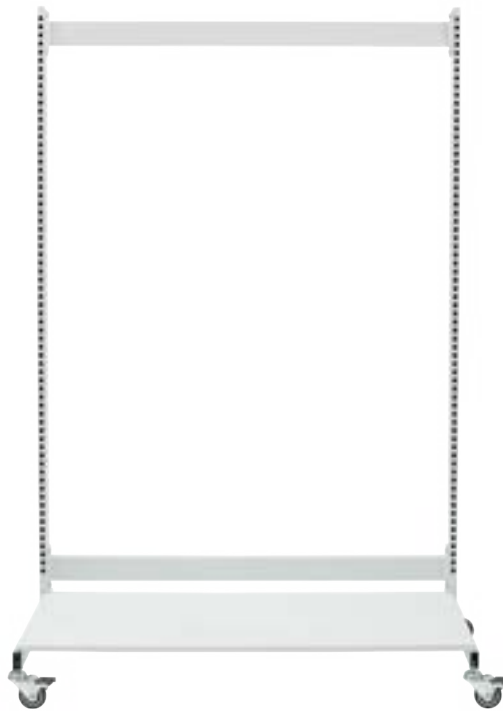
Par Wall is an ingenious storage system designed around visibility, accessibility and organization. Baskets mount to a frame or panel / rail on the wall.

FREESTANDING

This is the original Par Wall. The heavy-duty steel frame allows maximum visibility. Slots on 1" centres allow users to configure the baskets to fit any need. Using special brackets, the top baskets can be slanted for increased visibility and access.



Frames and Kits



PWMS36
Single Sided Frame
(shown assembled)

| MODEL # | DESCRIPTION | DIMENSIONS (D x W x H inches) |
|-------------|---|----------------------------------|
| PWMS18 | Single-sided frame on casters, with dust cover, cross bars | 24 x 18 x 80 |
| PWMS36 | Single-sided frame on casters, with dust cover, cross bars | 24 x 36 x 80 |
| PWMS48 | Single-sided frame on casters, with dust cover, cross bars | 24 x 48 x 80 |
| PWMS18.33 | PWMS18, 3-12" baskets, 6-12" dividers, and 3-18" baskets, 3-18" dividers | 24 x 18 x 80 |
| PWMD36 | Double-sided frame on casters, with dust cover, cross bars | 40.25 x 36 x 80 |
| PWMD48 | Double-sided frame on casters, with dust cover, cross bars | 40.25 x 48 x 80 |
| PWMS18.43 | PWMS18, 4-12" baskets, 8-12" dividers, and 3-18" baskets, 3-18" dividers | 24 x 18 x 80 |
| PWMS36.33 | PWMS36, 3-12" baskets, 15-12" dividers, and 3-18" baskets, 9-18" dividers | 24 x 36 x 80 |
| PWMS36.34* | PWMS36, 3-12" baskets, 15-12" dividers, and 4-18" baskets, 12-18" dividers | 24 x 36 x 80 |
| PWMS36.43* | PWMS36, 4-12" baskets, 20-12" dividers, and 3-18" baskets, 9-18" dividers | 24 x 36 x 80 |
| PWMS36.86* | PWMD36, 8-12" baskets, 40-12" dividers, and 6-18" baskets, 18-18" dividers | 40.25 x 36 x 80 |
| PWMS48.16* | PWMS48, 1-12" baskets, 6-12" dividers, and 6-18" baskets, 40-18" dividers | 24 x 48 x 80 |
| PWMS48.33 | PWMS48, 3-12" baskets, 18-12" dividers, and 3-18" baskets, 12-18" dividers | 24 x 48 x 80 |
| PWMS48.34* | PWMS48, 3-12" baskets, 18-12" dividers, and 4-18" baskets, 16-18" dividers | 24 x 48 x 80 |
| PWMS48.43* | PWMS48, 4-12" baskets, 24-12" dividers, and 3-18" baskets, 12-18" dividers | 24 x 48 x 80 |
| PWMD48.212* | PWMD48, 2-12" baskets, 12-12" dividers, and 12-18" baskets, 80-18" dividers | 40.25 x 48 x 80 |
| PWMD48.68* | PWMD48, 6-12" baskets, 36-12" dividers, and 8-18" baskets, 32-18" dividers | 40.25 x 48 x 80 |
| PWMD48.86* | PWMD48, 8-12" baskets, 48-12" dividers, and 6-18" baskets, 24-18" dividers | 40.25 x 48 x 80 |

* One of the sets of basket attachment brackets slants the basket. PWMD48 kits include two of the sets.

Individual Frame Components



PWCAST3HD
Casters



PWLF
Leveling Foot

| MODEL # | DESCRIPTION | DIMENSIONS (W inches) |
|------------|--------------------------|--------------------------|
| PWFS76 | Single-sided frame | 24 x 80 |
| PWFD76 | Double-sided frame | 48 x 48 |
| PWDC18 | Bottom dust cover | 18 |
| PWDC36 | Bottom dust cover | 36 |
| PWDC48 | Bottom dust cover | 48 |
| PWCAST3BHD | 3" caster with brake | |
| PWCAST3HD | 3" swivel caster | |
| PWLF | Leveling foot for frames | |
| PWCB18 | Cross bar set | 18 |
| PWCB36 | Cross bar set | 36 |
| PWCB48 | Cross bar set | 48 |



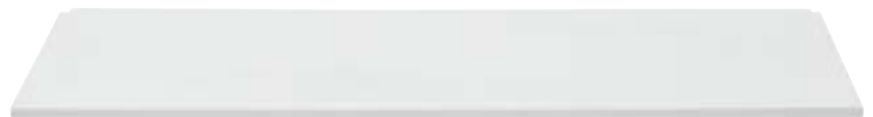
PWFS76
Single Sided Frame



PWFD76
Double Sided Frame



PWCB36
Cross Bar



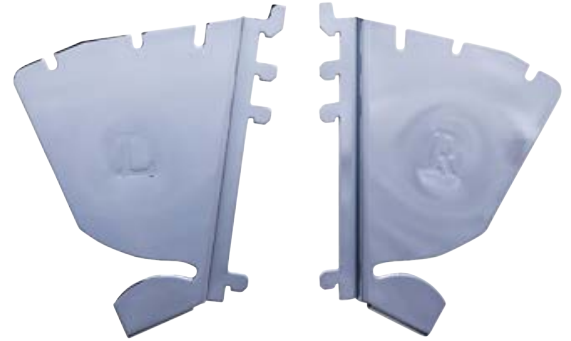
PWDC48
Dust Cover

Storage Components

See applicable section below.

Brackets

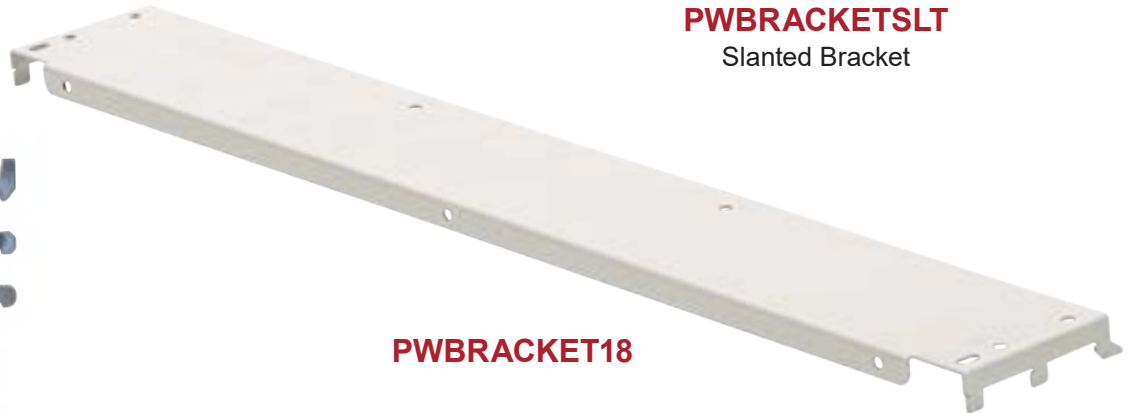
| MODEL # | DESCRIPTION |
|---------------|---|
| PWBRACKET | Standard brackets (pair) for mounting baskets |
| PWBRACKETSLT | Brackets (pair) for slanting baskets |
| PWBRACKET18 | Mounts louvered panel to 18" frame |
| PWBRACKET36 | Mounts louvered panel to 36" frame |
| PWBRACKET3661 | Mounts P3661 panel to 36" frame, set of 4 |



PWBRACKETSLT
Slanted Bracket



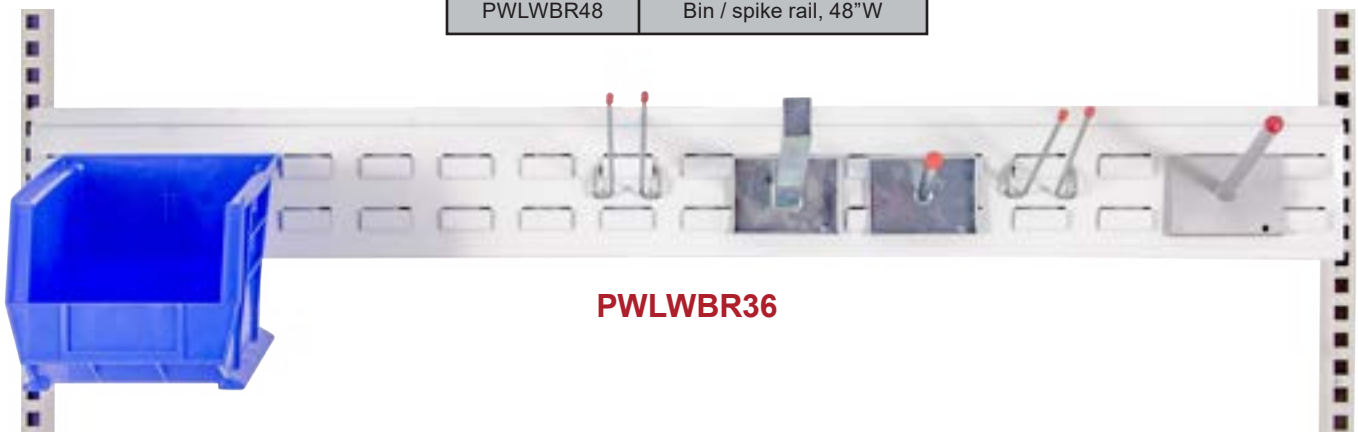
PWBRACKET
Bracket



PWBRACKET18

Accessories

| MODEL # | DESCRIPTION |
|----------|------------------------|
| PWLWBR18 | Bin / spike rail, 18"W |
| PWLWBR24 | Bin / spike rail, 24"W |
| PWLWBR36 | Bin / spike rail, 36"W |
| PWLWBR48 | Bin / spike rail, 48"W |



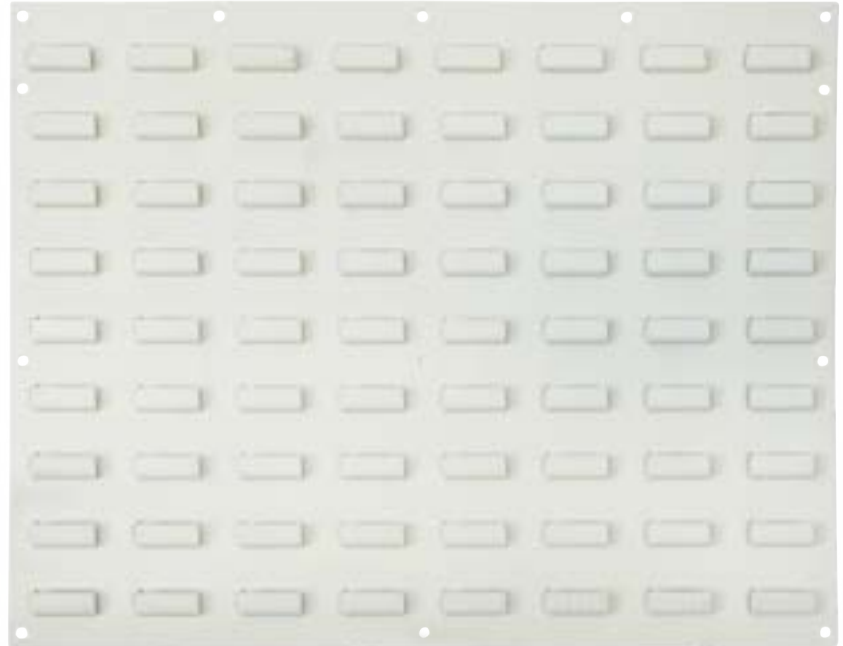
PWLWBR36

LOUVERED PANEL

Louvered panels are the conventional yet effective method of mounting baskets on the wall. This approach frees up floor space and still can utilize a variety of accessories.

Panels

| MODEL # | DESCRIPTION | DIMENSIONS (W x H inches) |
|---------|-------------|---------------------------|
| P3619B | White | 36.5 x 19 |
| P3661B | White | 36.5 x 61 |
| P4819B | White | 48.5 x 19 |
| P4861B | White | 48.5 x 61 |
| P1819B | White | 18.5 x 19 |
| P1861B | White | 18.5 x 61 |



Storage Components

See applicable section below.

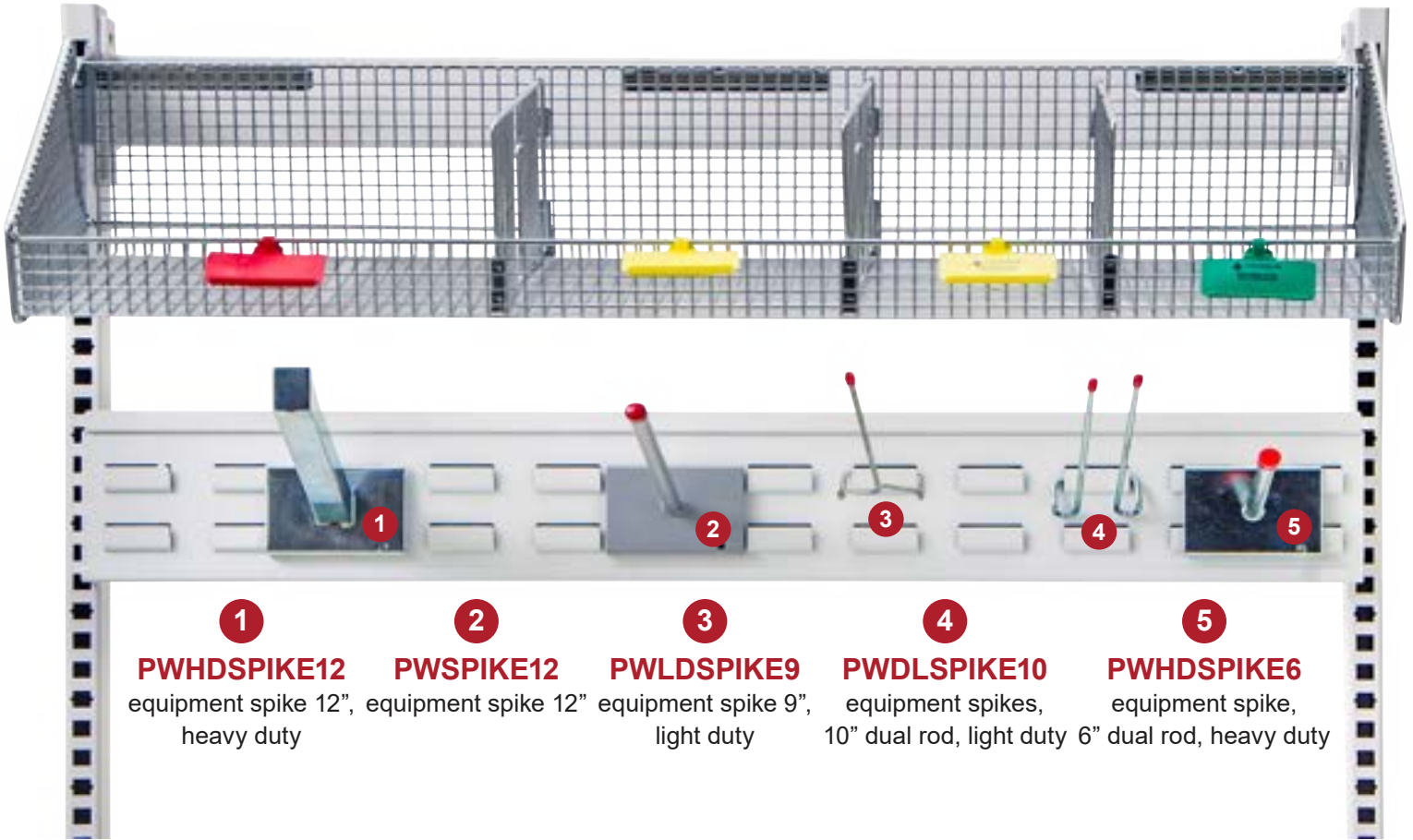
Brackets

| MODEL # | DESCRIPTION |
|---------------|--|
| PWBRACKET18 | Mounts louvered panel to 18" w frame |
| PWBRACKET36 | Mounts louvered panel to 36" w frame |
| PWBRACKET3661 | Mounts louvered panel to 36" w frame, set of 4 |
| PWBRACKETSH | Mounts PFWxxxxSH shelf (pair) |



PWBRACKET18

Spikes and Hooks



- 1**

PWHDSPIKE12
equipment spike 12", heavy duty
- 2**

PWSPIKE12
equipment spike 12"
- 3**

PWLDSPIKE9
equipment spike 9", light duty
- 4**

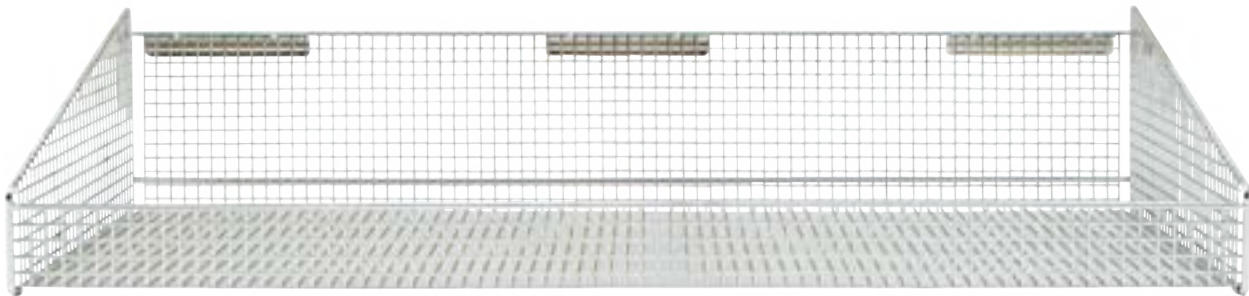
PWDLSPIKE10
equipment spikes, 10" dual rod, light duty
- 5**

PWHDSPIKE6
equipment spike, 6" dual rod, heavy duty

| MODEL # | DESCRIPTION |
|--------------|--|
| PWHDSPIKE12 | Equipment spike HVY.DTY.TUBE, 12", angled (square) |
| PWSPIKE12 | Equipment spike 12", angled (square) |
| PWSPIKE9 | Equipment spike 9", light duty rod |
| PWDLSPIKE10 | Equipment spikes, 10" dual rod, light duty |
| PWDLSPIKE6 | Equipment spike, 6" single rod, heavy duty |
| HTH | Tape holder |
| PWCRUTCH3619 | Crutch storage, 36.5 x 19 panel & 5-PWHDSPIKE12 |
| PWCRUTCH3661 | Crutch storage, 36.5 x 19 panel & 10-PWHDSPIKE12 |

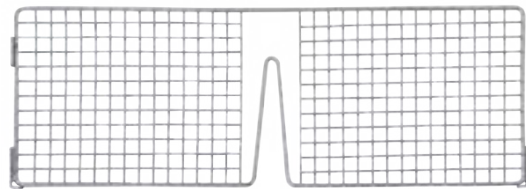
Baskets

| MODEL # | DESCRIPTION | DIMENSIONS (W x D inches) |
|-----------|--|------------------------------|
| PFW1218FM | Fine mesh, 2.5" front lip, 6.25"H back, chrome | 18 x 12 |
| PFW1236FM | Fine mesh, 2.5" front lip, 6.25"H back, chrome | 36 x 12 |
| PFW1248FM | Fine mesh, 2.5" front lip, 6.25"H back, chrome | 48 x 12 |
| PFW1818FM | Fine mesh, 2.5" front lip, 6.25"H back, chrome | 18 x 18 |
| PFW1836FM | Fine mesh, 2.5" front lip, 6.25"H back, chrome | 36 x 18 |
| PFW1848FM | Fine mesh, 2.5" front lip, 6.25"H back, chrome | 48 x 18 |



PFW1836FM
36" Fine Mesh

Basket Dividers



DVW84PF
Pressure Fit Divider

| MODEL # | DESCRIPTION | DIMENSIONS (W x H inches) |
|----------|----------------------|------------------------------|
| DVW10PF | Pressure fit, chrome | 10 x 4 |
| DVW126-2 | Pressure fit | 12 x 6 |
| DVW186-2 | Pressure fit | 18 x 6 |
| DVW246-2 | Pressure fit | 24 x 6 |
| DVW44PF | Pressure fit, chrome | 4 x 4 |
| DVW64PF | Pressure fit, chrome | 6 x 4 |
| DVW66PF | Pressure fit, chrome | 6 x 6 |
| DVW84PF | Pressure fit, chrome | 8 x 4 |

Shelves

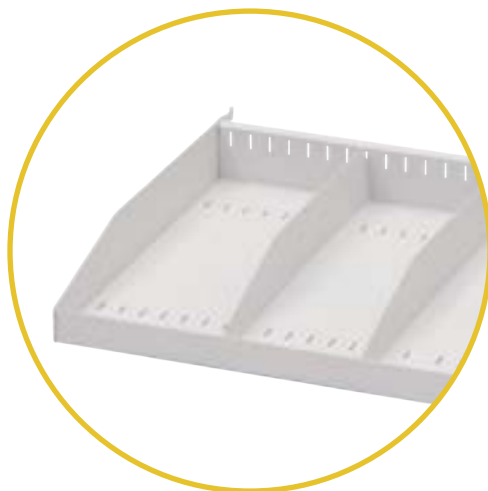
| MODEL # | DESCRIPTION | DIMENSIONS (W x H inches) |
|------------|--------------------------|------------------------------|
| PFW1236FSH | Dust shelf, flat, white | 36 x 12 |
| PFW1818SH | Dust shelf, flat, white | 18 x 18 |
| PFW1836SH | Dust shelf, flat, white | 36 x 18 |
| PFW1848SH | Dust shelf, flat, white | 48 x 18 |
| PWSH1818 | Sloped shelf | 18 x 18 |
| PWSH1836 | Sloped shelf | 36 x 18 |
| PWSH1848 | Sloped shelf | 48 x 18 |
| PWSHDIV | Divider for sloped shelf | |



PWSH1818
18" x 18" Sloped Shelf



PFW1848SH
48", Dust Shelf



PWSH1836
Sloped Shelf
shown with dividers (**PWSHDIV**)



PWSHDIV
Divider for Sloped Shelf

Label Holders

LH3 COLOUR
3", Specify Colour When Ordering



PURPLE

PINK

BERRY

RED

ORANGE



YELLOW

GREEN

BLUE

TEAL

STONE



BLACK



WHITE

| MODEL # | DESCRIPTION |
|-----------|----------------------------------|
| LH3-COLOR | 3", specify colour when ordering |
| PWLH36BL | 36", blue, label pocket |
| PWLH36CL | 36", clear, label pocket |
| PWLH48BL | 48", blue, label pocket |
| PWLH48CL | 48", clear, label pocket |



PWLH48BL

48", Blue Label Pocket



PWLH48CL

48", Clear Label Pocket

KANBAN SYSTEM



- Stocked Inventory lanes
- Kanban signal showing need to stock

PAR WALL TWO BIN KANBAN SYSTEM

- Higher capacity than wire shelves with bins
- More sku's with higher pars
- No lost space on shelf with wire divider system
- Total visibility of inventory
- Full width basket shelves 36" or 48"
- Full depth basket shelves of 12" or 18"
- Fine mesh or large mesh chrome baskets
- Self-cleaning, open wire design



Kanban Flipper - Easy order management

| MODEL # | DESCRIPTION | DIMENSIONS (W x H inches) |
|--------------|------------------------|---------------------------|
| DVKB127-1 | 1/pkg, includes clips | 11.75 x 7 |
| DVKB127-10 | 10/pkg, includes clips | 11.75 x 7 |
| DVKB129-1 | 1/pkg, includes clips | 11.75 x 8.5 |
| DVKB129-10 | 10/pkg, includes clips | 11.75 x 8.5 |
| DVKB189-1 | 1/pkg, includes clips | 17.75 x 8.5 |
| DVKB189-10 | 10/pkg, includes clips | 17.75 x 8.5 |
| DVKB208-51.5 | 1/pkg, includes clips | 20 x 8.5 |
| DVKB248-51.5 | 1/pkg, includes clips | 20 x 8.5 |
| DVKB27-1 | 1/pkg, includes clips | 1.75 x 7 |
| DVKB27-10 | 10/pkg, includes clips | 1.75 x 7 |
| DVKB358-51.5 | 1/pkg, includes clips | 35 x 8.5 |
| DVKB37-1 | 1/pkg, includes clips | 2.75 x 7 |
| DVKB37-10 | 10/pkg, includes clips | 2.75 x 7 |
| DVKB39-1 | 1/pkg, includes clips | 2.75 x 8.5 |
| DVKB39-10 | 10/pkg, includes clips | 2.75 x 8.5 |
| DVKB47-1 | 1/pkg, includes clips | 3.75 x 7 |
| DVKB47-10 | 10/pkg, includes clips | 3.75 x 7 |
| DVKB49-1 | 1/pkg, includes clips | 3.75 x 8.5 |
| DVKB49-10 | 10/pkg, includes clips | 3.75 x 8.5 |
| DVKB67-1 | 1/pkg, includes clips | 5.75 x 7 |
| DVKB67-10 | 10/pkg, includes clips | 5.75 x 7 |
| DVKB69-1 | 1/pkg, includes clips | 5.75 x 8.5 |
| DVKB69-10 | 10/pkg, includes clips | 5.75 x 8.5 |
| DVKB97-1 | 1/pkg, includes clips | 8.75 x 7 |
| DVKB97-10 | 10/pkg, includes clips | 8.75 x 7 |
| DVKB99-1 | 1/pkg, includes clips | 8.75 x 8.5 |
| DVKB99-10 | 10/pkg, includes clips | 8.75 x 8.5 |



Fully stocked lane



When front bin is empty, user moves flipper down signaling need to re-stock / re-order



When flipper is down order signal is on display, back bin becomes accessible for interim supply



Flip Divider

Clamps to the basket.

Flip the signal when time to reorder.