

ACART



Specification Guide

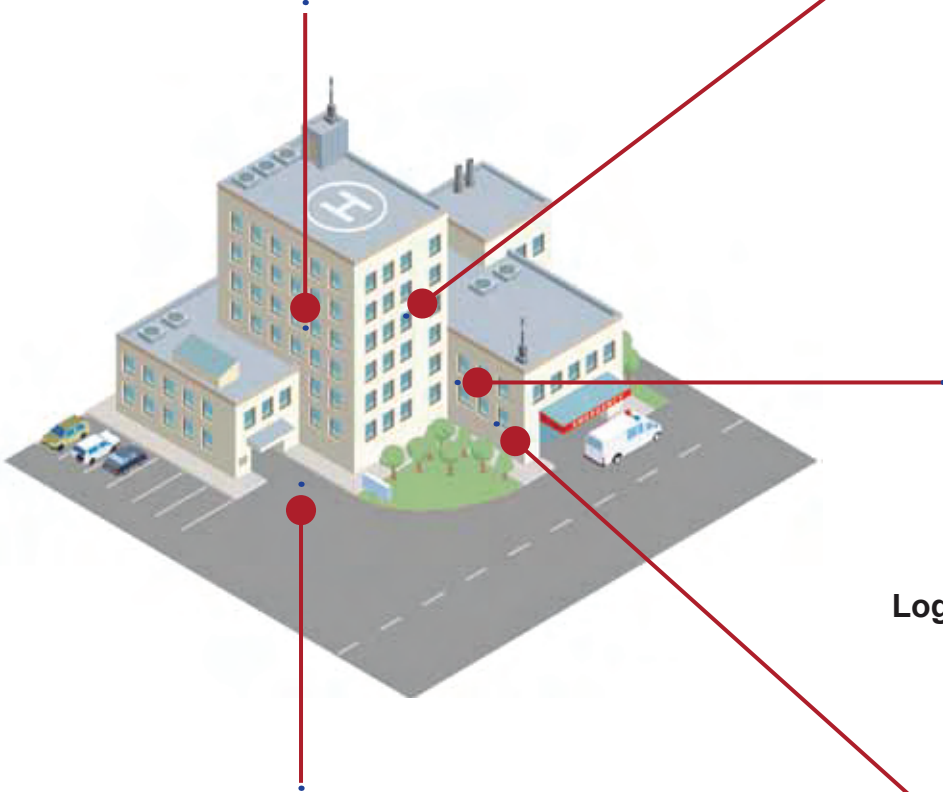
OR MDR



LogiCell Cabinetry in the OR



Case Carts and Par Wall in the OR



LogiCell Room Carts in the OR



Basket - Carts and Par Wall in Reprocessing



Case Carts, Storage and Wrap Carts in Reprocessing

Closed Case Carts

MODEL #	CASE DIMENSIONS (D x W x H inches)	OVERALL DIMENSIONS (D x W x H inches)	DOORS	ADJUSTABLE SHELVES
CCWB242654	28.5 x 28.5 x 47.25	32.625 x 34 x 56.375	1	2
CCS243654	25 x 40.25 x 47.25	28.125 x 46 x 56.375	2	2
CCWB243754	25 x 36 x 47.25	29.125 x 41.75 x 56.375	2	2
CCWB242639	25 x 23.625 x 30.5	29.125 x 29.375 x 39.625	1	1
CCWB243754	24.75 x 36 x 44.5	28.125 x 41.75 x 53.625	2	2
CCS242439	25 x 23.25 x 28.5	28.125 x 28.75 x 37.625	1	1
CCS242454	25 x 23.625 x 46.25	29.125 x 29.375 x 55.375	1	2
CCS243739	25 x 36 x 31	29.125 x 41.75 x 40	2	1
CCWB244439	25.825 x 46.5 x 31.25	29 x 52.25 x 40.25	2	2

Additional sizes available for specific requirements; please contact us for further assistance

Additional shelving available for purchase

Model # will change based on features added



STANDARD FEATURES

- Fully welded construction
- 8.5" x 11" card holder
- Sound-proofed tops and doors
- Tilted pan base
- Adjustable perforated roll out stainless steel shelves
- Exterior push handle
- Full wrap around non-marring bumper
- Tamper evidence security tab
- Positive lock door latches
- Removable doors on pin hinges
- 6" maintenance-free, high-temperature, high-pressure stainless steel casters with sealed ball bearings (3 swivel and 1 directional lock)
- Other caster configuring available (braking, rigid)
- 270 degree swing door

OPTIONAL FEATURES

- Glass doors
- Etching for serial tag ID/tracking
- Etching for end user logo
- Adjustable solid shelf (roll out)
- Adjustable solid shelf (non roll out)
- Adjustable perforated shelf (non roll out)
- Adjustable wire shelf (roll out)
- Adjustable wire shelf (non roll out)
- No shelves
- Side extensions
- Flag system (one each of red, yellow, and green)
- Improved clean/dirty indicator
- Tow hitch



Extendable Drop Shelf



Tow Hitch

Wide Body and Standard

MODEL #	AVAILABLE OPTIONS
CC-TSE	Top extension drop shelf, 16" x 24"
CC-TOW	Top hitch system, customizable
-S	Sealed case cart add-on includes door gasket, locking



CC242654

Casters

MODEL #	DESCRIPTION
CCCAST6	Case cart caster, swivel
CCCAST6B	Case cart caster, with brake
CCCAST6DL	Case Cart Caster, directional lock

STANDARD CASTERS

- SS, 6" x 1.5"
- Sealed bearings, upper & lower race
- Grease fitting, bearings and axle
- High temp wheels, poly
- Cart washable
- Standard configuration is all swivel, one directional lock, two braking
- Optional sizes available upon request



CCCAST6DL



CCCAST6



CCCAST6B

Sealed Case Carts

BASE MODEL #	CASE DIMENSIONS (D x W x H inches)	OVERALL DIMENSIONS (D x W x H inches)	DOORS	ADJUSTABLE SHELES
CCWB242654-S	28.5 x 28.5 x 47.25	32.625 x 34 x 56.375	1	2

Additional sizes available for specific requirements; please contact us for further assistance
 Additional shelving available for purchase, shelving adjusts in 3" increments
 Model # will change based on features added

STANDARD FEATURES

- Door gaskets for increased sterility control
- Magnetic door catches
- perforated roll-out shelves

Vertical Handle Case Carts

BASE MODEL #	CASE DIMENSIONS (D x W x H inches)	OVERALL DIMENSIONS (D x W x H inches)
	26.5 x 39.5 x 40.75	27.75 x 48.25 x 53
CC243651-VH	24.75 x 40 x 38.75	26 x 48.75 x 51

Additional sizes available for specific requirements; please contact us for further assistance
 Additional shelving available for purchase
 Model # will change based on features added



CCWB242654-S

STANDARD FEATURES

- Ergonomically friendly vertical handles for precise control
- Fully welded construction
- 8.5" x 11" card holder
- Sound-proofed tops and doors for quiet operation
- Adjustable perforated roll out stainless steel shelves
- Full wrap around non-marring bumper
- Tamper evidence security tabs
- Positive lock door latches
- 6" maintenance-free, high temp, high pressure stainless steel casters with sealed ball bearings (3 swivel and 1 directional lock)

OPTIONAL FEATURES

- Glass doors
- Etching for serial tag ID/tracking
- Etching for end user logo
- Adjustable solid shelf (roll out)
- Adjustable solid shelf (non roll out)
- Adjustable perforated shelf (non roll out)
- Adjustable wire shelf (roll out)
- Adjustable wire shelf (non roll out)
- No shelves
- Side extensions
- Flag system (one each of red, yellow, and green)
- Improved clean/dirty indicator
- Tow hitch
- Total locking casters
- Silicon door gaskets for complete sterility control
- Cool touch handles



CC243654-VH

Over the Road Case Cart

MODEL #	OUTER DIMENSIONS (D x W x H inches)
OTRCC3657SS	30 x 43.75 x 57
OTRCC2657SS (1/2 size cart model)	30 x 31.5 x 57

Total Stainless Cart Transport sterile supplies and instrumentation offsite safely and cleanly

- 28"D x 39.25"W x 45.75"H cabinet (24.94 cu. ft.)
- Shelf size: 26"D x 39"W
- Capacity for 6 full size containers
- 12, 18, 24 container capacity available
- Unique container retention system
- Top storage space: 5"H
- Bottom storage space: 14.5"H
- All welded stainless construction
- 6" x 2" heavy-duty cart washable casters
- Two directional locking, two swivel with brake
- Full wrap-around bumper system on top and bottom of cart
- Overlapping self-sealing door system, with 95° cart seal
- Double locking key doors
- Breakaway security tab



Easy slide indicator eliminates guesswork and errors



OTRCC3657SS



Flag System



Tow Hitch



OTRCC2657SS



CCL266067T



CCL2940



TOC28

Open Case Carts

BASE MODEL #	OVERALL DIMENSIONS (D x W x H inches)
CCL2940	29.375 x 40.375 x 37.5
CCL266067T	26.125 x 60.375 x 67
CCI2436T	30.875 x 40.75 x 39
TOC28	29.75 x 29.75 x 62
CCL293654T	24 x 30 x 54
TOC24	24 x 24 x 54

Additional sizes available for specific requirements; please contact us for further assistance

Shelves ordered separately

Model # will change based on features added

STANDARD FEATURES

- Open design
- Sturdy built cart - perfect for storage, supplies, linens, or distribution
- Full wrap around non-marring bumper
- Stainless steel guard rail
- 6" composite directional locking casters

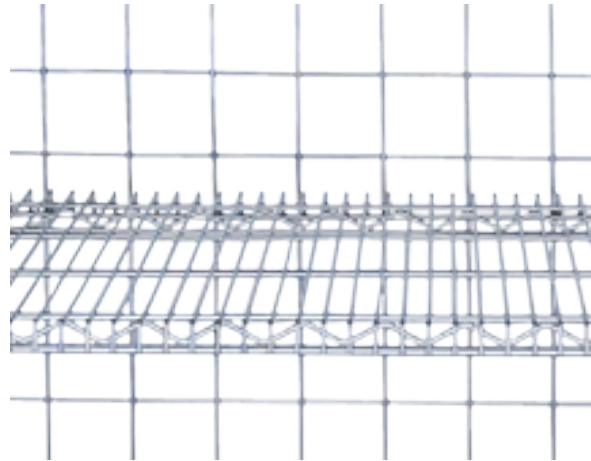
OPTIONAL FEATURES

- Adjustable solid shelf (non roll out)
- Adjustable perforated shelf (non roll out)
- Adjustable wire shelf (non roll out)
- Wire grid on back side
- 6" maintenance-free, high temp, high pressure stainless steel casters with sealed ball bearings (3 swivel and 1 fixed directional)
- Total locking casters
- 6" plastic bin
- 10" plastic bin

Open Case Cart Accessories



Card Holders



Backscreen of 3" x 3" wire mesh welded to frame



Cart washable baskets and totes



Different caster heights and configurations



Nylon or disposable plastic cart covers (clear or opaque)

Supply Carts

BASE MODEL #	OVERALL DIMENSIONS (D x W x H inches)
MMSC243645	24 x 36 x 45
MMSC243664	24 x 36 x 64
MMSC245264	24 x 52 x 64

*Additional sizes available for specific requirements; please contact us for further assistance
Model # will change based on features added*

STANDARD FEATURES

- Fully welded stainless steel construction
- Wrap around bumper
- 6" heavy-duty, maintenance-free casters
- Industry grade containers

OPTIONAL FEATURES

- Locking casters
- Additional containers
- Dividers



MMSC243664



MMSSC243657

Sterilizer Carts

BASE MODEL #	OVERALL DIMENSIONS (D x W x H inches)
MMSSC243657	24 x 36 x 57

*Additional sizes available for specific requirements; please contact us for further assistance
Model # will change based on features added*

STANDARD FEATURES

- 304 stainless steel welded construction
- Three (3) adjustable shelves
- Perforated bottom
- Electropolished surface
- 5" high-temperature, high pressure casters
- Teflon non-marring bumper

OPTIONAL FEATURES

- Additional shelves

Wrap / Pick Carts



WC60CH



MB455CH-CL



WC36SS

Sterile Wrap Rack

MODEL #	OVERALL DIMENSIONS (D x W x H inches)
WC48CH	24 x 48 x 69
WC60CH	24 x 60 x 69

STANDARD FEATURES

- Chrome plated steel
- 60" models hold wraps up to 54" x 72"
- Four bars standard. Rubber "O" rings attached to bars to secure wraps from sliding off rack
- 5" swivel non-marring casters, 3" non-marring bumpers
- Bottom chrome wire shelf with plastic shelf cover

Assembly Cart

MODEL #	OVERALL DIMENSIONS (D x W x H inches)
MB455CH-CL	24 x 48 x 80

STANDARD FEATURES

- For use beside every reprocessing worktable
- Five chrome wire shelves
- Solid plastic bottom shelf cover
- 5" swivel non-marring casters, two with brakes

Sterile Wrap Carts

MODEL #	OVERALL DIMENSIONS (D x W x H inches)
WC36SS	20 x 38 x 63

STANDARD FEATURES

- Stainless steel welded construction
- Solid bottom shelf for additional storage
- Four adjustable bars (adjustable in 1" increments for comfortable work height)
- 3" casters (2 swivel and 2 locking)

Ortho Cart System

MODEL #	OUTER DIMENSIONS (W x D x H inches)	BRACKETS
300-V	Single short implant cart. 1-3", 2-5", 1-8" baskets. Optional Sstainless steel top available	27.5 x 25 x 43
PS300-V	Single short container cart. 3 chrome wire shelves and stainless steel top current build has 3 shelves and a solid top	27.5 x 25 x 43
3200-V	Double short implant cart. 2-3", 4-5", 2-8" baskets. Optional stainless steel top avaiable	27.5 x 44 x 43
PS320-V	Double short container cart. 8 chrome wire shelves. Optional SS top available	27.5 x 44 x 43
5000-V	Single medium implant cart. 1 - 3", 4 - 5", 1 - 8" baskets	27.5 x 25 x 58.5
PS500-V	Single medium container cart. 6 chrome wire shelves	27.5 x 25 x 58.5
5200-V	Double medium implant cart. 2 - 3", 8 - 5", 2 - 8" baskets	27.5 x 44 x 58.5
PS520-V	Double medium container cart. 12 chrome wire shelves	27.5 x 44 x 58.5
6000-III	Single tall implant cart. 1 - 3", 6 - 5" baskets	27.5 x 25 x 74.5
PS600-III	Single tall container cart. 7 chrome wire shelves	27.5 x 25 x 74.5
6200-III	Double tall implant/container cart. 7 chrome wire shelves and 7 - 5" baskets	27.5 x 44 x 74.5
PS620-III	Double tall container cart. 14 each chrome wire shelves	27.5 x 44 x 74.5
63000-III	Triple tall implant/container cart. 7 chrome wire shelves and 14 - 5" baskets	27.5 x 65 x 74.5
PS630-III	Triple tall container cart. 21 each chrome wire shelves	27.5 x 65 x 74.5

Not automatic cart washable, hand wash only.



6200-V
Container Cart

Ortho Cart System Features and Benefits

- A clean cart system designed to store and transport various types of ortho implants and/or related instrument sets within surgical services
- Carts are maintained in reprocessing and sent to the OR with a companion case cart. The case cart holds basic sets and picked supplies
- Eliminates/reduces the need for giant ortho case carts or multiple smaller case carts
- Integrates well with loaner instrument programs



6200-III
Cart with Implants

Ortho Implant and Container Cart Specifications

- All-welded 1-1/2" square tubular epoxy-coated steel frame
- All shelves waterfall-edge and baskets on full-extension slides. Stoppers available
- Corner bumpers, 4 x 5" swivel casters, two with brakes

Utility / Pick Carts

BASE MODEL #	OVERALL DIMENSIONS (D x W x H inches)
UC162432	16 x 24 x 32
UC162834	16 x 28 x 34
UC224034	22 x 40 x 34
AL-200 (A-Frame Design)	19 x 38.5 x 35.5
AL-200-2442 (A-Frame Design)	24 x 42 x 35.5

*Additional sizes available for specific requirements;
please contact us for further assistance
Model # will change based on features added*

UC - LIGHT DUTY



UC162432

AL - MEDIUM DUTY



AL-200

STANDARD FEATURES

- Fully welded stainless steel construction
- 3-sided 1" lip (on top and middle shelf) to keep items from rolling off
- Front side turned down (on top and middle shelf) for easier access
- Open design for easy cleaning and sanitizing
- 3" swivel casters (non-locking)
- Push handle
- 200 lb. weight capacity

OPTIONAL FEATURES

- Locking casters
- Additional shelves
- Customized shelf size and spacing

STANDARD FEATURES

- Fully welded stainless steel construction
- 3-sided 1" lip (on top and middle shelf) to keep items from rolling off
- Front side turned down (on top and middle shelf) for easier access
- Open design for easy cleaning and sanitizing
- 6" swivel casters (non-locking)
- Push handle
- 300 lb. weight capacity

OPTIONAL FEATURES

- Locking casters
- Additional shelves
- Customized shelf size and spacing

Kick Buckets

MODEL #	OVERALL SIZE (H x diameter inches)	DESCRIPTION
KB	14 x 13-1/2	Removable 12 quart stainless steel basin.
KBSB	8 x 16-1/4	Removable 8 1/2 quart stainless steel basin.

STANDARD FEATURES

- Stainless steel frame
- Perimeter bumper to protect walls
- 2" swivel casters
- Tip resistant



KBSB



KB



DBS

Solution / Ring Stands

MODEL #	SIZE	DIMENSIONS (D x W x H inches)	DESCRIPTION
SBS	Single	14 x 14 x 34	SS solution stand, H-brace
SBSS	Single	14 x 14 x 34	SS solution stand, bottom shelf
DBS	Double	14 x 28 x 34	SS solution stand, H-brace
DBSS	Double	14 x 28 x 34	SS solution stand, bottom shelf
SBS-8.5	9-1/2 Quart	14 x 14 x 34	SS solution stand, H-brace
SBSS-8.5	9-1/2 Quart	14 x 14 x 34	SS solution stand, bottom shelf
DBS-8.5	x2 9-1/2 Quart	28 x 14 x 34	SS solution stand, H-brace
DBSS-8.5	x2 9-1/2 Quart	28 x 14 x 34	SS solution stand, bottom shelf



DBSS



SBS



SBSS

STANDARD FEATURES

- Available in single and double basin designs
- Fully welded stainless steel construction
- Available with lower shelf or H-brace
- 2" casters swivel
- Accessible from any side with open frame design
- 7 quart basin
- Add suffix - 8.5 for 9.5 quart basin

Mayo Stands

MODEL #	TRAY SIZE (Inches)	# OF COLUMNS	LOCK DESCRIPTION
M1319TK	13.625 x 19.125	Single	Hand operated, knob operated
MD1319H	12.625 x 19.125	Dual	Hand operated, friction lock
M1621TK	16.25 x 21.25	Single	Hand operated, knob operated
MD1621H	16.25 x 21.26	Dual	Hand operated, friction lock
MD2025H	20 x 25	Dual	Hand operated, friction lock
M1319F	13.625 x 19.125	Single	Foot operated
MD1319F	13.625 x 19.125	Dual	Foot operated
M1621F	16.25 x 21.25	Single	Foot operated
MD1621F	16.25 x 21.25	Dual	Foot operated
MD2025F	20 x 25	Dual	Foot operated



MD1621F



M1621F



MD1621H



M1621TK

Optional Mobile Base



Step / Foot Stools

MODEL #	DIMENSIONS (D x W x H inches)	FINISH	DESCRIPTION
1250	13-3/8 x 14-1/4 x 9	Chrome	Step / foot stool
1251	13-3/8 x 14-1/4 x 9	Chrome	Step / foot stool with 35-3/4" steel handrail
1260SS	13-3/8 x 14-1/4 x 9	Stainless steel	Step / foot stool
1261	13-3/8 x 14-1/4 x 9	Stainless steel	Step / foot stool with 35-3/4" steel handrail
STS121805	12 x 18 x 5	Stainless steel	Stackable step stool, can stack safely for increased height and interlock to create larger platform
T0800		Stainless steel	Stackable step stool dolly, can transport up to 6 stools. 4 x 3" swivel casters
STS121805	12 x 18 x 5-1/4	Stainless steel	Stackable step stool, connect together to create a large platform
STS121808-HD	12 x 18 x 5-1/4	Stainless steel	Step / foot stool with handle
STS263015	26 x 30 x 15	Stainless steel	Step / foot stool (two steps)

Additional sizes available for specific requirements; please contact us for further assistance

STANDARD FEATURES

- Corrugated, black rubber top surface on each stool
- Rubber floor tips
- Slip-resistant surface and tip-resistant design

OPTIONAL FEATURES

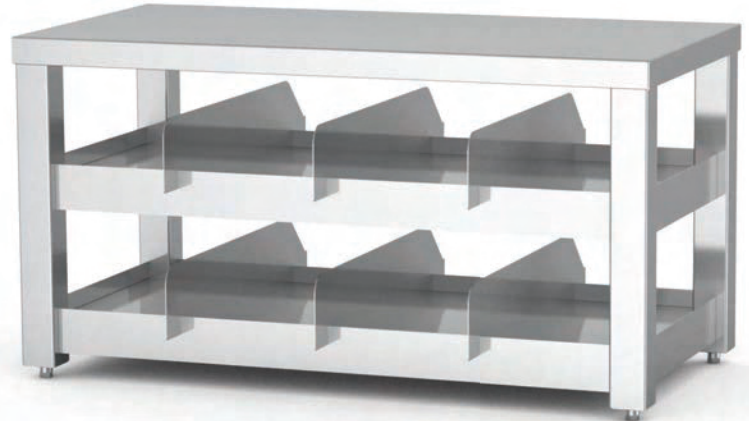
- Easy roll around transport cart with casters (2 locking) available for STS121805; holds up to 5 single step stools



Gowning Benches

BASE MODEL #	OVERALL DIMENSIONS (D x W x H inches)
GB183619-2SH-AF	18"D x 36"W x 19"H
GB184819-2SH-AF	18"D x 48"W x 19"H

Additional sizes available for specific requirements;
please contact us for further assistance
Model # will change based on features added



STANDARD FEATURES

- Stainless steel construction
- Dividers
- Middle & bottom shelf
- Adjustable feet

OPTIONAL FEATURES

- Casters

GB184819-2SH-AF

Century Series Stools

MODEL #	ADJUSTABLE HEIGHT (Inches)	ADDED FEATURES
11001BFR	20 - 27.5	Backrest, footring
11001BVFR	20 - 27.5	Backrest, vacuum formed / seamless, footring
11001BFR-C133	20 - 27.5	Backrest, footring, upholstery
11001FR	20 - 27.5	Footring
11001VFR	20 - 27.5	Vacuum formed / seamless, footring
11001FR-C133	20 - 27.5	Footring, upholstery
11001B	17.75 x 24.5	Backrest
11001BV	17.75 x 24.5	Backrest, vacuum formed / seamless
11001BLCD	17.75 x 24.5	Backrest, locking casters
11001BG	16.75 - 23.5	Backrest, glides
11001BFR-C133	17.75 x 24.5	Backrest, footring, upholstery
11001B-UL	17.75 x 24.5	Backrest, ultraleather upholstery
11001	17.75 x 24.5	?
11001V	17.75 x 24.5	Vacuum formed / seamless
11001LCD	17.75 x 24.5	Locking casters
11001G	16.75 - 23.5	Glides
11001-C133	17.75 x 24.5	Upholstery
11001-UL	17.75 x 24.5	Ultraleather upholstery



11001BFR



11001B



11001



11001FR

STANDARD FEATURES

- 16" diameter
- 4" thick poly-foam seat cushion
- Five-leg dependability
- 22.25" brushed aluminum accent base
- Available in black or cabernet colours

Millennium Series Stools

MODEL #	ADJUSTABLE HEIGHT (Inches)	INCLUDED FEATURES
21435B	18 - 24.75	Backrest
21435BA	18 - 24.75	Backrest, arm rests
21520B	20.75 - 31	Glides
21521B	21.75 - 32	Casters
21340B	19 - 24 (foot operated)	18.5" seat, backrest
21340BV	19 - 24 (foot operated)	18.5" vacuum formed seat, backrest
21340	19 - 24 (foot operated)	16" seat, seamless upholstery not standard
21340V	19 - 24 (foot operated)	16" vacuum formed seat
2102265		Set of 5 pressurized locking casters (sit to lock casters)
3102277		Replacement casters (set of 5)



21340
(in Black)

STANDARD FEATURES

- 18.5" diameter
- Contoured seat cushion
- Adjustable contoured backrest (unless otherwise noted)
- Power-coated black aluminum base
- 2" dual-wheel nylon casters with polyurethane thread (unless otherwise noted)
- Weight capacity: 250 lbs.
- Available in multiple colours



21521B
(in Adriatic)



21435BA
(in Azure Blue)



21340B
(in Wedgewood)

Step-On Chrome Linen Hamper

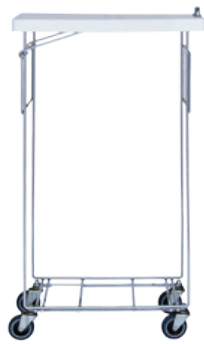
MODEL #	OVERALL SIZE (D x W x H inches)	CASTER SIZE (Inches)	DESCRIPTION
HS50	20.5 x 19 x 38	2	Step-on opening feature, bottom rack to support heavy loads, storage rack for extra bags

Basic Spring Chrome Linen Hampers

MODEL #	OVERALL SIZE (D x W x H inches)	CASTER SIZE (Inches)	DESCRIPTION
CA20	12 x 19 x 38	3	No lid
CA21	12 x 19 x 38	3	Plastic lid w/ chrome handle



CA20



CA21



HS50



LQH-1000



LQH-1001



LQH-2001



LQH-2000

Stainless Steel Linen Hampers

MODEL #	OVERALL SIZE (H inches)	CASTER SIZE (Inches)	DESCRIPTION
LQH-1000	35	3 (swivel)	1000 series, accommodates 18" diameter bags
LQH-1001	35	3 (swivel)	1000 series, accommodates 25" diameter bags
LQH-2000	35	3 (swivel)	2000 series, accommodates 18" diameter bags
LQH-2001	35	3 (swivel)	2000 series, accommodates 25" diameter bags

OPTIONAL FEATURES

- FOL = Foot operated stainless steel lid
- BG = Rotating bumper guards over casters
- Capitalize foot and rotating
- Fully-welded, heavy gauge all stainless steel construction
- Full, heavy gauge stainless steel platform to support bags and ease of removal

IV Stands

MODEL #	OPERATED WITH	# OF LEGS	# OF HOOKS	POLE FINISH	BASE FINISH	CASTERS SIZE	HEIGHT ADJUSTMENT
IVS-3002	Foot	5	2	Stainless steel	Stainless steel	2" swivel	68" - 108"
IVS-3004	Foot	5	4	Stainless steel	Stainless steel	2" swivel	68" - 108"
IVS-3006	Foot	5	6	Stainless steel	Stainless steel	2" swivel	68" - 108"
IVS-4002	Foot	4	2	Stainless steel	Stainless steel	2" swivel	68" - 108"
IVS-4004	Foot	4	4	Stainless steel	Stainless steel	2" swivel	68" - 108"
IVS-4006	Foot	4	6	Stainless steel	Stainless steel	2" swivel	68" - 108"
IVS-5002	Hand	4	2	Stainless steel	Stainless steel	2" swivel	68" - 108"
IVS-5004	Hand	4	4	Stainless steel	Stainless steel	2" swivel	68" - 108"
IVS-5006	Hand	4	6	Stainless steel	Stainless steel	2" swivel	68" - 108"
IVS-6002	Hand	6	2	Stainless steel	Stainless steel	2" swivel	68" - 108"
IVS-6004	Hand	6	4	Stainless steel	Stainless steel	2" swivel	68" - 108"
IVS-6006	Hand	6	6	Stainless steel	Stainless steel	2" swivel	68" - 108"
IVS-7002	Hand	5	2	Stainless steel	Stainless steel	2" swivel	68" - 108"
IVS-7004	Hand	5	4	Stainless steel	Stainless steel	2" swivel	68" - 108"
IVS-7006	Hand	5	6	Stainless steel	Stainless steel	2" swivel	68" - 108"
1305	Hand	4	2	Chrome	Powder coated	2" swivel	47-1/2" - 85-1/2"
1310	Hand	4	2	Chrome	Powder coated	2" swivel	51-1/2" - 93"
1370-4	Hand	6	4	Chrome	Powder coated	3" swivel	52" - 90"
1370SS-4	Hand	6	4	Stainless steel	Powder coated	3" swivel	52" - 90"
1371SS-4	Hand	6	4	Stainless steel	Stainless steel	3" swivel	52" - 90"
1370-6	Hand	6	6	Chrome	Powder coated	3" swivel	52" - 90"
1370SS-6	Hand	6	6	Stainless steel	Powder coated	3" swivel	52" - 90"
1371SS-6	Hand	6	6	Stainless steel	Stainless steel	3" swivel	52" - 90"
1370-RH	Hand	6	8 (rake)	Chrome	Powder coated	3" swivel	52" - 90"
1370SS-RH	Hand	6	8 (rake)	Stainless steel	Powder coated	3" swivel	52" - 90"
1371SS-RH	Hand	6	8 (rake)	Stainless steel	Stainless steel	3" swivel	52" - 90"



1305



1310



IVS-3004



IVS-4004



IVS-5002



IVS-6004



IVS-7004



1370SS-RH



3501389001



3501381000



9101107600



7801380000



7801382000



7801384000



7801385000



7801386000

IV Stands Accessories

MODEL #	DESCRIPTION
3501389001	Wire basket
3501381000	Guidance handle (MR option available)
9101107600	Power strip
7801380000	Accessory clamp
7801382000	Drainage bag hook
7801384000	Pump support tray
7801385000	Multi-pump support
7801386000	Tank holder

Back - Instrument Tables

MODEL #	OUTER DIMENSIONS (D x W x H inches)	DESCRIPTION
BT1620	16 x 20 x 34	Stainless steel back / instrument table, bottom shelf
BT1630	16 x 30 x 34	Stainless steel back / instrument table, bottom shelf
BT2436	24 x 36 x 34	Stainless steel back / instrument table, bottom shelf
BT2448	24 x 48 x 34	Stainless steel back / instrument table, bottom shelf
BT2460	24 x 60 x 34	Stainless steel back / instrument table, bottom shelf
BT2472	24 x 72 x 34	Stainless steel back / instrument table, bottom shelf
BT1620H	16 x 20 x 34	Stainless steel back / instrument table, H-brace
BT1630H	16 x 30 x 34	Stainless steel back / instrument table, H-brace
BT2436H	24 x 36 x 34	Stainless steel back / instrument table, H-brace
BT2448H	24 x 48 x 34	Stainless steel back / instrument table, H-brace
BT2460H	24 x 60 x 34	Stainless steel back / instrument table, H-brace
BT2472H	24 x 72 x 34	Stainless steel back / instrument table, H-brace

Additional sizes available for specific requirements; please contact us for further assistance



BT1620

STANDARD FEATURES

- Fully-welded construction
- Reinforced tops for tables over 25" wide
- Durable 1-1/4" 16 gauge stainless steel legs
- 16 gauge type 304 stainless steel top
- 18 gauge type 304 stainless steel under shelf
- 2" swivel casters



BT1630H

OPTIONAL FEATURES

- 3" wivel casters
- Locking casters
- Drawers mount under worktop
- Stainless steel guard rails, on 3 or 4 sides
- 1" lip on back
- Multiple under shelves
- Side extensions



BT2448

Utility Tables - Prep Stands

MODEL #	OUTER DIMENSIONS (D x W x H inches)	DRAWERS	DESCRIPTION
UT1620D	16 x 20 x 34	1	Stainless steel back / instrument table, 3-sided top rail, 1 drawer, 2 shelves
UT1620D2	16 x 20 x 34	2	Stainless steel back / instrument table, 3-sided top rail, 2 drawers, 2 shelves
UT1620D3	16 x 20 x 34	3	Stainless steel back / instrument table, 3-sided top rail, 3 drawer, 2 shelves
UT1620D4	16 x 20 x 34	4	Stainless steel back / instrument table, 3-sided top rail, 4 drawer, 1 shelf
UT1833D1	18 x 33 x 34	1	Stainless steel back / instrument table, 3-sided top rail, 1 drawer, 2 shelves
UT1833D2	18 x 33 x 34	2	Stainless steel back / instrument table, 3-sided top rail, 2 drawers, 2 shelves
UT1833D3	18 x 33 x 34	3	Stainless steel back / instrument table, 3-sided top rail, 3 drawers, 1 shelf

Additional sizes available for specific requirements; please contact us for further assistance



UT1620D



UT1620D2



UT1620D3

STANDARD FEATURES

- Fully welded construction
- under shelf
- 4" drawer(s)
- Top guard rail (on 3 sides)
- 3" casters (2 swivel & 2 locking)

OPTIONAL FEATURES

- CuVerro antimicrobial copper alloy handle(s)
- Multiple under shelves for one drawer tables
- No guard rail



UT1833D3

Work Tables

MODEL #	OUTER DIMENSIONS (D x W x H inches)	DESCRIPTION
MTF 101	30 x 60 x 34	Stainless steel work table, H-brace
MTF 102	36 x 60 x 34	Stainless steel work table, H-brace
MTF 103	44 x 60 x 34	Stainless steel work table, H-brace
MTF 104	30 x 72 x 34	Stainless steel work table, H-brace
MTF 105	36 x 72 x 34	Stainless steel work table, H-brace
MTF 106	44 x 72 x 34	Stainless steel work table, H-brace
MTF 107	30 x 96 x 34	Stainless steel work table, H-brace
MTF 108	36 x 96 x 34	Stainless steel work table, H-brace
MTF 109	44 x 96 x 34	Stainless steel work table, H-brace
MTS 101	30 x 60 x 34	Stainless steel work table, bottom shelf
MTS 102	36 x 60 x 34	Stainless steel work table, bottom shelf
MTS 103	44 x 60 x 34	Stainless steel work table, bottom shelf
MTS 104	30 x 72 x 34	Stainless steel work table, bottom shelf
MTS 105	36 x 72 x 34	Stainless steel work table, bottom shelf
MTS 106	44 x 72 x 34	Stainless steel work table, bottom shelf
MTS 107	30 x 96 x 34	Stainless steel work table, bottom shelf
MTS 108	36 x 96 x 34	Stainless steel work table, bottom shelf
MTS 109	44 x 96 x 34	Stainless steel work table, bottom shelf

STANDARD FEATURES

- Fully welded construction
- Reinforced stainless steel top (16 gauge type 300 series)
- Stainless steel under shelf (18 gauge type 300 series)
- 2" square legs
- Added supports
- 5" casters (2 swivel & 2 locking)

OPTIONAL FEATURES

- Ergonomically friendly adjustable heights (manual or electronic)
 - Manual adjustable height range: 36" - 55"
 - Electronic adjustable height range: 36" - 43"
- Full base unit underneath
- Drawers under all sizes
- Stainless steel guard rails
- Multiple under shelves



NT2448-6



MTS104

Nesting Back - Instrument Tables

MODEL #	OUTER DIMENSIONS (D x W x H inches)	DESCRIPTION
NT1428	14 x 28 x 32	Stainless steel nesting table, U-brace
NT1632	16 x 32 x 34	Stainless steel nesting table, U-brace
NT1836	18 x 36 x 36	Stainless steel nesting table, U-brace
NT2040	20 x 40 x 38	Stainless steel nesting table, U-brace
NT2244	22 x 44 x 40	Stainless steel nesting table, U-brace
NT2448	24 x 48 x 42	Stainless steel nesting table, U-brace
NT2448-6	24 x 48 x 42	Stainless steel nesting table, U-brace, set of 6



TSPS-1000-6030

OR Back Tables

BASE MODEL #	OVERALL DIMENSIONS (D x W x H inches)
TSPS-1000-6030	30 x 60 x 36
TSPS-1000-7230	30 x 72 x 36

Adjustable Over Operating Tables

BASE MODEL #	OVERALL DIMENSIONS (D x W x H inches)
T0082-3442	42 x 34 x 36.5
T0082-4824	24 x 48 x 36.5
T0082-6024	24 x 60 x 36.5

Height at lowest setting

STANDARD FEATURES

- Ergonomically friendly manual adjustable height
– Manual adjustable height range: 36.5" - 48.25"
- 3" casters (2 swivel & 2 locking)

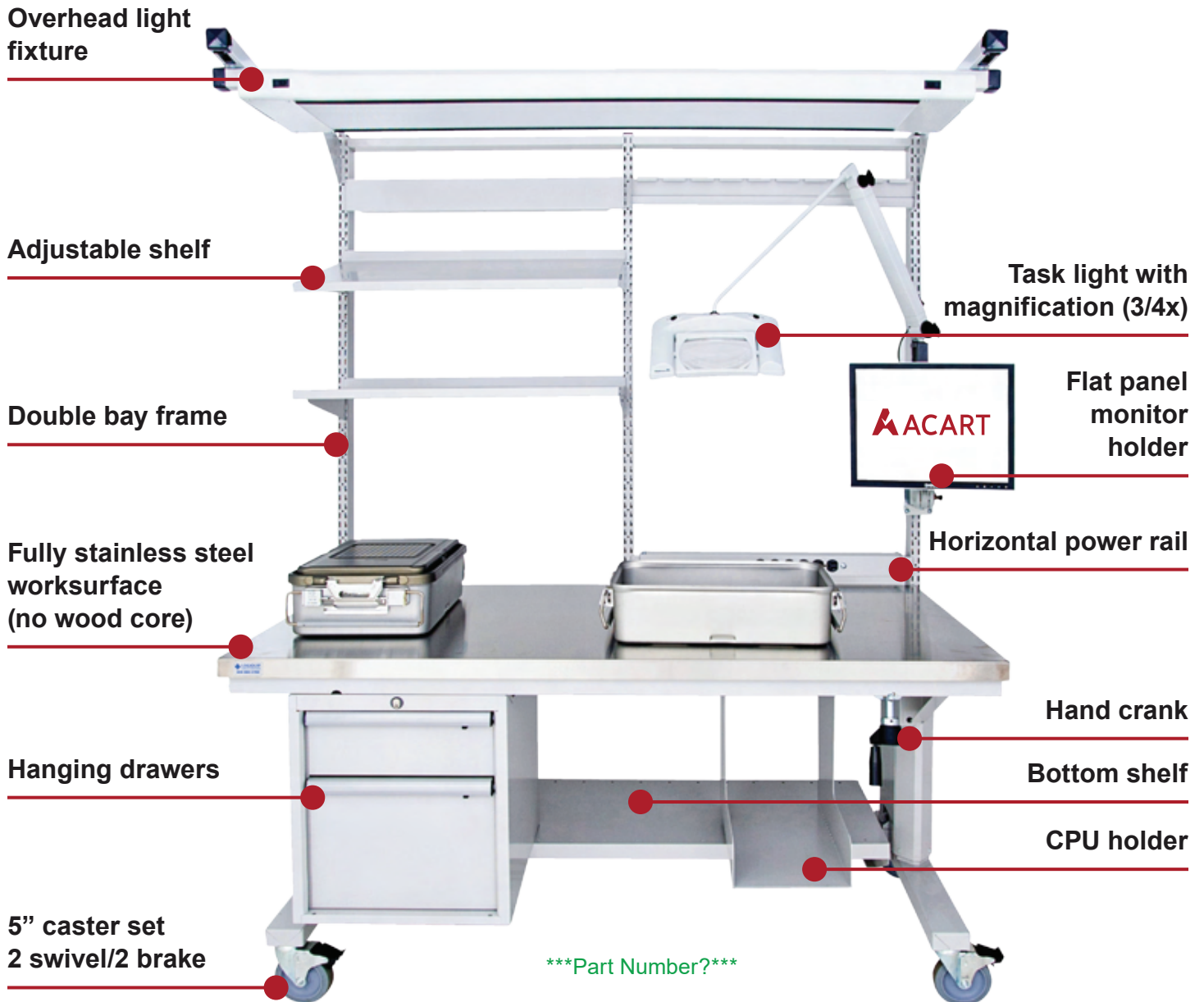
OPTIONAL FEATURES

- 1" lip on back



T0082-3442

Height Adjustable Reprocessing Work Station



Height Adjustable Reprocessing Worktables



Manual or Motorized Height - Adjustable Reprocessing Worktables An Ergonomic Solution

- Height-adjustable from 31.5" low, to 47.5"
- Steel base with epoxy powder coat finish. Standard color: Light gray
- Motorized (low voltage) or manual adjustment - Motorized has a 3-position memory for adjustment by each technician
- 16-gauge #304 stainless steel top (no wood core)
- 500 lb. capacity
- One step height adjustment. All work station accessory components raise and lower with the table automatically
- 5" Casters come standard

Height-Adjustable Work Tables with Stainless Steel Top

MODEL #	DIMENSIONS (D x W x H inches)	DESCRIPTION
ALC/R6030	30 x 60 x 31.5 - 47.5	Hand crank
ALC/R6036	36 x 60 x 31.5 - 47.5	Hand crank
ALE/R6030	30 x 60 x 31.5 - 47.5	Motorized adjustment
ALE/R6036	36 x 60 x 31.5 - 47.5	Motorized adjustment

Table Mounted Upright Frames

MODEL #	DIMENSIONS (Inches)	DESCRIPTION
NXF/RM6048-2	60 x 48	Frame, double bay, rear justified
NXF/RM7248-2	72 x 48	Frame, double bay, rear justified

Shelves

MODEL #	DIMENSIONS (Inches)	DESCRIPTION
NXS/A3615L	15 x 36	Shelf, adjustable, 100 lb cap
NXS/V3618L	18 x 36	Shelf, variable angle, 150 lb cap

Drawer Systems

MODEL #	DIMENSIONS (D x W x H inches)	DRAWERS
WBHC150-1	19.25 x 16.75 x 8	(1) 5.75"H
WBHC300-1	19.25 x 16.75 x 14	(1) File
WBHC300-2	19.25 x 16.75 x 14	(2) 5.75"H
WBHC450-2	19.25 x 16.75 x 20	(1) 5.75"H / (1) File
WBHC450-3	19.25 x 16.75 x 20	(3) 5.75"H

Includes key lock, bracket kit, all-steel construction, standard light gray, full-extension slides.

Additional Accessories

MODEL #	DESCRIPTION
CPU/H	CPU holder
NXA/MS-KB	Monitor shelf & keyboard holder
NX/MP	Mouse tray
NXRMT/3030-NT	Marker board, 2 sided
LTWL 0304	Task light with magnification (3/4X)
QQNX/AMB-BKT/EXT	Frame mounting bracket for LTWL 0304
QQNX/AMB-SLV	Frame mounting sleeve for LTWL 0304
NXHPS/30-15	Power rail, 30", horizontal, 15 AMP

Fully Stainless Workstations

MODEL #	DIMENSIONS (D x W x H inches)
TWS-3060	32-1/4 x 60 x 81
TWS-3072	32-1/4 x 72 x 81
TWS-3660	38-1/4 x 60 x 81
TWS-3672	38-1/4 x 72 x 81

Height at lowest setting



TWS-3672
(shown with multiple optional features)

STANDARD FEATURES

- 100% stainless steel construction
- Modular design allows for multiple configuration
- Integrated footrest
- 4" casters (2 swivel & 2 locking)

OPTIONAL FEATURES

- CuVerro antimicrobial copper alloy handle(s)
- Ergonomically friendly adjustable heights (manual or electronic)
 - Adjustable height range: 36" - 44"
- Bin rail
- Overhead light
- Articulating magnification light
- Electrical strip
- CPU holder
- Pull out keyboard tray
- Magnetic dry erase board
- Adjustable flat shelf for rise frame
- Adjustable 45° angled shelf for riser frame
- Lower shelf
- Spool holder
- Drawer boxes (single or double)

Processing Sinks

BASE MODEL #	OVERALL DIMENSIONS (D x W x H inches)	MODEL DETAILS
PS267237-1	26 x 72 x 37, Single Basin	Stationary height
PS269637-1	26 x 96 x 37, Dual Basin	Stationary height
PS2612037-1	26 x 120 x 37, Triple Basin	Stationary height
PS267235-9	26 x 72 x 35, Single Basin	Electronic adjustable height
PS269635-9	26 x 96 x 35, Dual Basin	Electronic adjustable height
PS2612035-9	26 x 120 x 35, Triple Basin	Electronic adjustable height
PS-269635-AH-PG2-CU1	26 x 96 x 35 - 42	
PS-2612035-AH-PG3-CU	26 x 120 x 35 - 42	
PS-267735-AH-PG2-CU	26 x 77 x 35 - 42	
PCB-001-ASM		Sink controller

Additional sizes available for specific requirements;
please contact us for further assistance
Model # will change based on features added

Power Requirements (Electronic Adjustable Height Sinks)
120 Volt, 60 Hz, single phase, 15 amp GFCI protected electrical outlet,
installed per local building codes, and provides protective earth

OPTIONAL FEATURES

- Ergonomically friendly electronic adjustable height with four position programming
 - Electronic adjustable height range: 35" - 42"
- Cabinet base (stationary height models only)
- Peg board back
- Overhead LED hood
- Wrap around apron
- Mixing valve faucet
- Pre-rinse faucet
- Deionized (DI) water faucet
- Air gun kit (with 5 tips)
- Water gun kit (with 8 tips)
- Shut off valve for air/water guns
- Dosing soap pumps
- Eye wash
- Drain boards
- Larger basin: 30"W x 17"L x 10"D
- Backsplash (6", 8" & 12")
- Side splash (4", 6", 8" & 12")
- Tubing manifold
- Hand lever drains
- Foot operated drains (stationary height models only)
- Copper drain system (not compatible with deionized water)



Note: ETL compliance for adjustable height models only.



PS2612035-9-1-3-11

(shown with electronic adjustable height pipe base with left to right workflow and optional pre-rinse faucets, DI water faucet, air gun, and water gun)

STANDARD FEATURES

- Open pipe base
- Single, dual, or triple basins
- Fully welded construction with reinforced tops
- Right to left workflow or left to right workflow
- 37" standard height for stationary sinks
- 4" backsplash
- Under shelf
- Adjustable feet
- Marine edge
- Flat working surface
- Etched gallon markings
- Basin size: 24"W x 17"L x 10"D
- Full CAD rendering of specified sink
- Multiple layouts for individual requirements
- All sinks can be manufactured to individual specs

Processing Sink Options



Cabinet Base

PS2612037-3-1-3-11

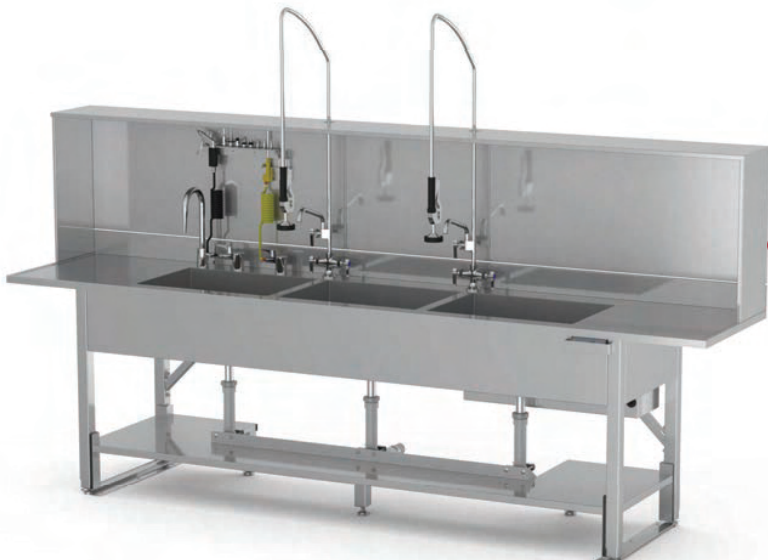
(shown with left to right workflow and optional pre-rinse faucets, DI water faucet, air gun, and water gun)



Wrap Around Apron

PS2612035-9-1-4-11

(shown with electronic adjustable height pipe base with left to right workflow and optional pre-rinse faucet, mixing valve faucet, DI water faucet, air gun, and water gun)



Overhead LED Hood

PS2612035-10-1-3-11

(shown with electronic adjustable height pipe base with right to left workflow and optional pre-rinse faucets, DI water faucet, air gun, and water gun)

ES-Series Surgical Scrub Sinks

Our ES-Series Surgical Scrub Sinks were developed to answer space and economical constraints where needed. These sinks have smaller outside dimensions compared to our SS-Series, but still maintain a deep basin to allow for proper scrubbing. The operation is the same as the SS-Series, however features do vary.



ES25
Single Station

STANDARD FEATURES

- Single, dual, or triple stations
- Deep sloping basin
- Adjustable thermostatic controlled pressure regulating mixing valve (one per station, mounted under sink)
- Knee operated water (optional with IR sinks)
- High mount swivel gooseneck spout with adjustable swivel spray aerator
- Flow control valve
- Backflow preventers
- Infrared sinks are equipped with a 24 volt plug in transformer
- Z-brackets (see specifications on rear panel for wall support)
- 304 stainless steel polished and ground to a #4 finish

OPTIONAL FEATURES

- Infrared operation
- Manual bypass to add knee operated water with IR operation
- Knee operated soap
- Knee operated soap with IR water operation
- Foot operated water
- Foot operated soap
- Digital scrub timer
- Eye wash
- Thermostatic mixing valve (add on to eye wash option)
- Laminar flow
- 220/240V power supply
- Pedestal base

ES-Series Standard Models

BASE MODEL #	OVERALL DIMENSIONS (D x W x H inches)
ES25 (Single Station)	23.5 x 25 x 20.5
ES47 (Dual Station)	23.5 x 47 x 20.5
ES76 (Triple Station)	23.5 x 76 x 20.5

*Additional sizes available for specific requirements; please contact us for further assistance
Model # will change based on features added*

How to Order ES-Series

INFRARED OPERATION	MANUAL BYPASS TO ADD KNEE OPERATED WATER WITH IR OPERATION	KNEE OPERATED SOAP WITH IR OPERATION	FOOT OPERATED WATER	DIGITAL SCRUB TIMER	EYE WASH	THERMOSTATIC MIXING VALVE (ADD ON TO EYE WASH OPTION)	LAMINAR FLOW	220/240V	PEDESTAL BASE
IR	MB	KSP	FOW	TM	EYE	TV	LF	220	PB

For example: base model # ES47 with laminar flow = model # ES47-LF

SS-Series Surgical Scrub Sinks

The SS-Series is our premier line of surgical scrub sinks. These sinks combine the best material, components, and craftsmanship available on the market today. Choose from single, dual, or triple stations.



SS32
Single Station



SS64
Dual Station



SS96
Triple Station

STANDARD FEATURES

- Single, dual, or triple stations
- Deep sloping basin
- Adjustable thermostatic controlled pressure regulating mixing valve (one per station, mounted under sink)
- Knee operated water (optional with IR sinks)
- Check stop strainers for ease of maintenance
- High mount swivel gooseneck spout with adjustable swivel spray aerator
- Flow control valve
- Backflow preventers
- Infrared sinks are equipped with a 24 volt plug in transformer
- Splash screen dividers with dual and triple station sinks
- Main support and Z-brackets (wall support optional)
- 304 stainless steel polished and ground to a #4 finish

OPTIONAL FEATURES

- Infrared operation
- Infrared soap dispenser
- Manual bypass to add knee operated water with IR operation
- Knee operated soap with IR water operation
- Foot operated water
- Foot operated soap
- Digital scrub timer
- Eye wash
- Thermostatic mixing valve (add on to eye wash option)
- Laminar flow
- 220/240V power supply
- Pedestal base
- In-wall chair carrier
- Wall shelf over sink
- Lighted wall shelf over sink

SS-Series Standard Models

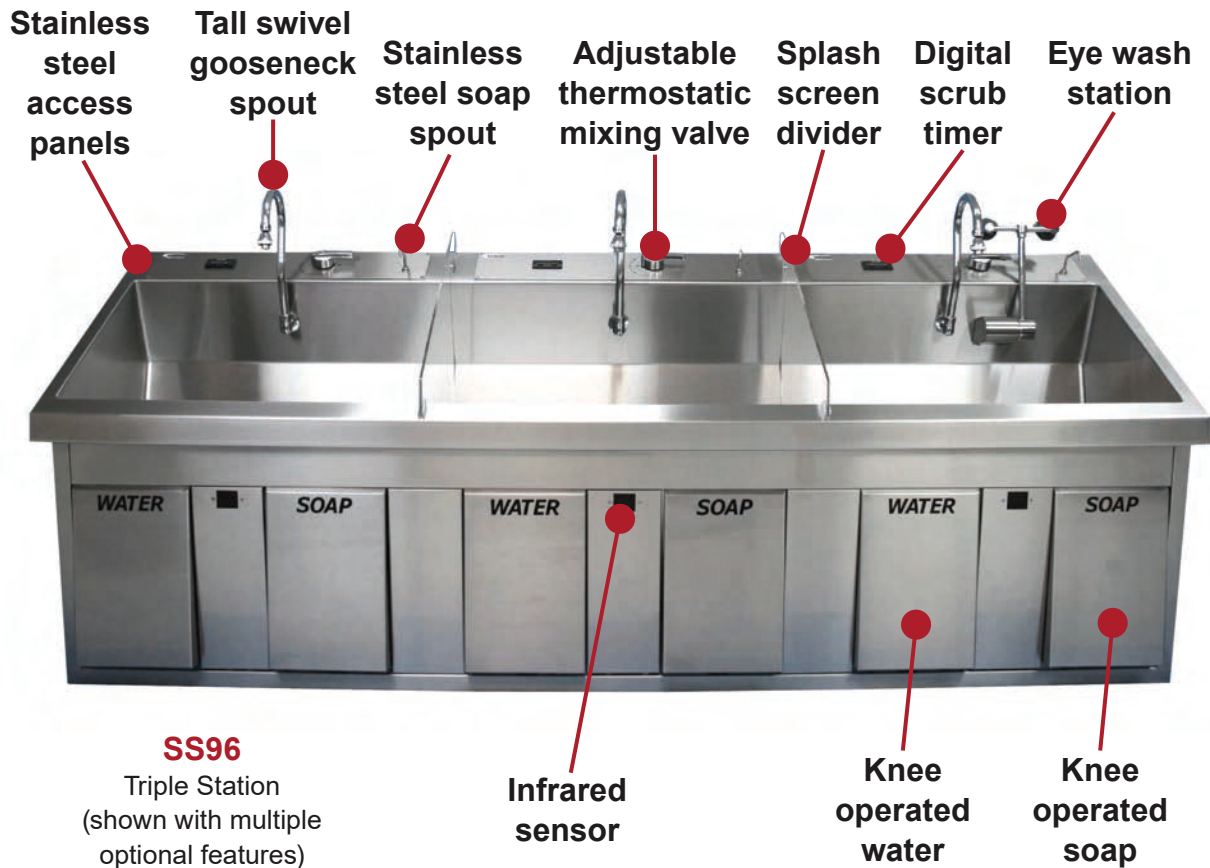
BASE MODEL #	DIMENSIONS (D x W x H inches)
SS32 (Single Station)	27.5 x 32 x 37
SS64 (Dual Station)	27.5 x 64 x 37
SS96 (Triple Station)	27.5 x 96 x 37

*Additional sizes available for specific requirements; please contact us for further assistance
Model # will change based on features added*

Recommended Optional Products

BASE MODEL #	IN-WALL CHAIR CARRIER #	SHELF OVER SINK #	LIGHTED SHELF OVER SINK #
SS32	S0001	SH0001 (12" D x 32" W)	SH0001-L
SS64	S0002	SH0002 (12" D x 64" W)	SH0002-L
SS96	S0003	SH0003 (12" D x 96" W)	SH0003-L

SS-Series Features and Options



SS96
Triple Station
(shown with multiple optional features)

Infrared sensor

Knee operated water

Knee operated soap

How to Order SS-Series

INFRARED OPERATION	INFRARED SOAP DISPENSER	MANUAL BYPASS TO ADD KNEE OPERATED WATER AND SOAP WITH IR OPERATION	KNEE OPERATED WATER WITH IR OPERATION	KNEE OPERATED SOAP WITH IR OPERATION	FOOT OPERATED WATER	FOOT OPERATED SOAP	DIGITAL SCRUB TIMER	EYE WASH	THERMOSTATIC MIXING VALVE (ADD ON TO EYE WASH OPTION)	LAMINAR FLOW	220/240V	PEDESTAL BASE
IR	IRD	MB	KOW	KSP	FOW	FSP	TM	EYE	TV	LF	220	PB

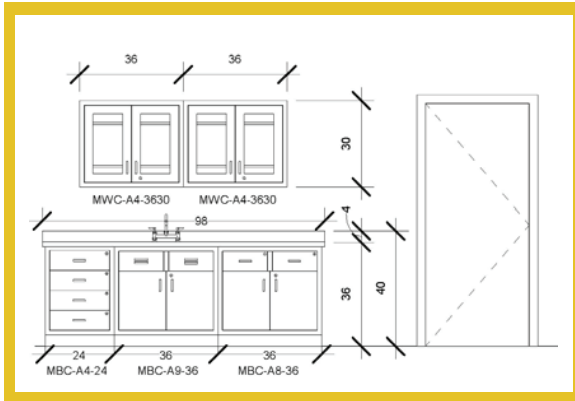
For example: base model # SS96 with foot operated water, eye wash, and laminar flow = model # SS96-FOW-EYE-LF

Utility Requirements

UTILITY	CONNECTION ON UNIT	PRESSURE RANGE	TEMPERATURE	CONSUMPTION
Drain	1 1/2" x 6" Tail Piece	N/A	N/A	N/A
Cold Water	1/2" NPT	20-50 PSIG	70° F. Max	2 GPM Per Station
Hot Water	1/2" NPT	20-50 PSIG	180° F. Max	2 GPM Per Station
Electrical (IR Units Only)	120V	N/A	N/A	N/A

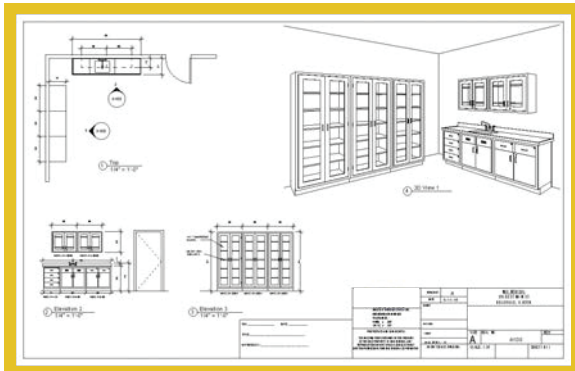
Stainless Steel Case Work and Cabinets

From Concept To Completion



1 Plan

Acart's experienced team of engineers can help conceptualize and plan a solution for your casework needs. Whether those needs are simply one cabinet or a complex build-out, we pride ourselves on helping you find a solution that works best for your facility. We will start with a proof of concept, and will revise your drawings until they meet your requirements.



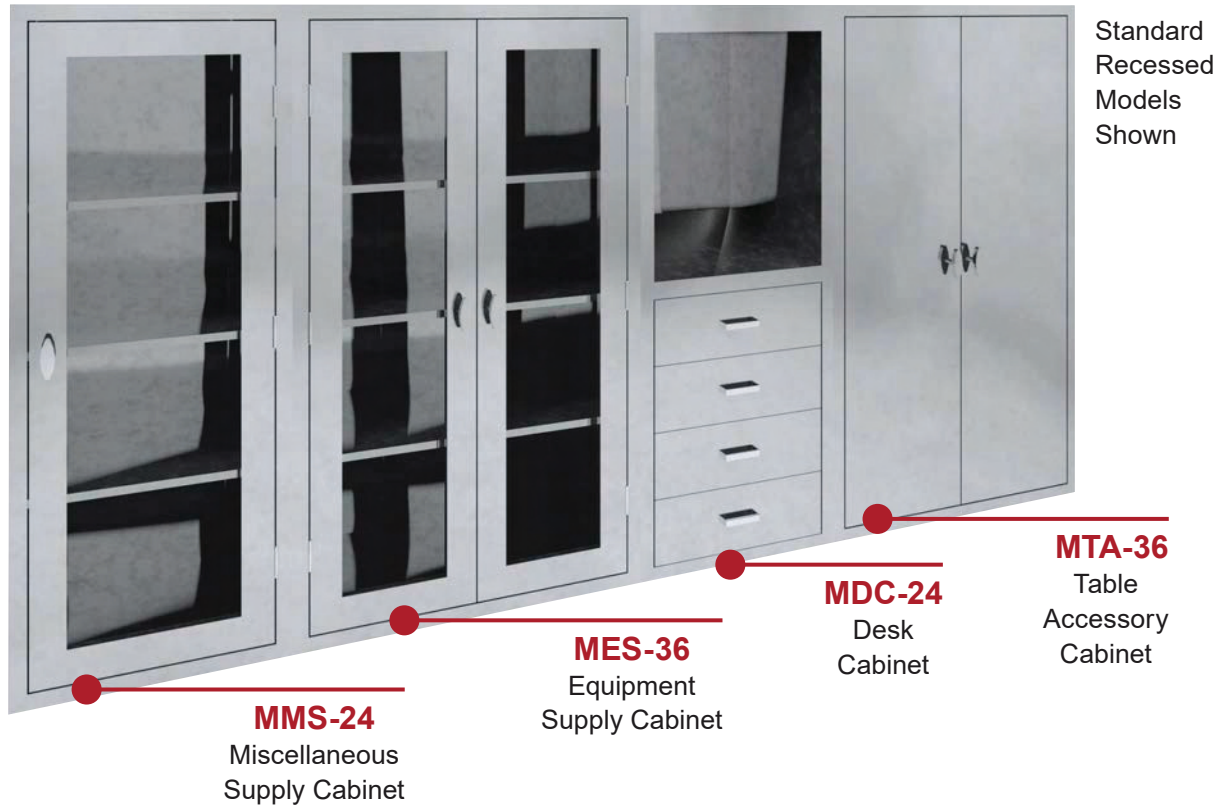
2 Build

Once the engineering drawings have been finalized and approved, your casework project starts to come to life. After your project has been built, Acart makes sure your product passes rigorous quality and standards check list prior to shipment.



3 Install

When your casework arrives at its destination, Acart ensures installation happens smoothly and timely. We communicate with the contractors/installers to ensure your product is installed according to your specifications. In short, Acart stays involved from concept to completion.



Operating Room Cabinets

Acart's full line of stainless steel Operating Room Cabinets can be assembled and configured in a number of ways to create a bank of cabinets to fit your facility needs. Standard models are recessed with several optional features to choose from.

STANDARD FEATURES

- Magnetic door catches with a quiet close
- Seamless front face on all cabinets
- Revit files & spec sheets available
- Recessed
- Fully welded construction
- Type 300 series stainless steel
- Stainless steel shelves (excludes Table Accessory Cabinets & Desk Cabinets, shelves adjust in 1-1/2" increments)
- 3/16" tempered glass (where applicable)



Wall Cabinets



High Cabinets



Base Cabinets

Acart's full line of stainless steel Wall Cabinets, Base Cabinets, and High Cabinets can be configured in a number of ways to create the arrangement your facility needs. Choose from solid doors, glass doors, sliding doors, or no doors. Many optional features are available including cam locks, tee handles, electronic keypad door lock, and sloping tops, to name a few.



Optional CuVerro
Antimicrobial
Copper Alloy Handle

STANDARD FEATURES

- Magnetic door catches with a quiet close
- Seamless front face on all cabinets
- Revit files & spec sheets available
- Fully welded construction
- Type 300 series stainless steel
- Stainless steel shelves (where applicable shelves adjust in 1-1/2" increments)
- 4" standard pull handle (excludes sliding doors)
- 3/16" tempered glass (where applicable)
- Adjustable feet on Base Cabinets & High Cabinets

Stainless Steel Cabinets



Sloped Top Option



Flat Pan Base

Stainless Steel Tall Cabinets, Cell System Cabinets

MODEL #	OUTER DIMENSIONS (D x W x H inches)	DESCRIPTION
42381LG	18 x 27 x 84	Cabinet, single column, cells, left glass door
42381RG	18 x 27 x 84	Cabinet, single column, cells, right glass door
42581HG-LC	18 x 36 x 84	Cabinet, cells left, 5 shelves right, 5 shelf dividers, glass doors
42581HG-RC	18 x 36 x 84	Cabinet, cells right, 5 shelves left, 5 shelf dividers, glass doors
42681HG-LC	18 x 42 x 84	Cabinet, cells left, 5 shelves right, 7 shelf dividers, glass doors
42681HG-RC	18 x 42 x 84	Cabinet, cells right, 5 shelves left, 7 shelf dividers, glass doors
44181LG	26 x 19.5 x 84	Cabinet, single column, cells, left glass door
44181RG	26 x 19.5 x 84	Cabinet, single column, cells, right glass door
44582HG	26 x 36 x 84	Cabinet, double column, cells, glass doors

Stainless Steel Tall Cabinets, Catheter Cabinets

MODEL #	OUTER DIMENSIONS (D x W x H inches)	DESCRIPTION
42580HGCAT1	18 x 36 x 84	Cath cabinet, (7) - 6 hook cath slides, 5 dividers, glass doors
42680HGCAT1	18 x 42 x 84	Cath cabinet, (9) - 6 hook cath slides, 7 dividers, glass doors
44580HGCAT1	26 x 36 x 84	Cath cabinet, (7) - 9 hook cath slides, 5 dividers, glass doors
42580HGCAT2	18 x 36 x 84	Cath cabinet, (7) - 6 hook cath slides
42680HGCAT2	18 x 42 x 84	Cath cabinet, (9) - 6 hook cath slides
44580HGCAT2	26 x 36 x 84	Cath cabinet, (7) - 9 hook cath slides
42580HGCAT3	18 x 36 x 84	Cath cabinet, (14) - 6 hook cath slides, 2 shelves, 4 dividers, glass doors
42680HGCAT3	18 x 42 x 84	Cath cabinet, (18) - 6 hook cath slides, 2 shelves, 4 dividers, glass doors
44580HGCAT3	26 x 36 x 84	Cath cabinet, (14) - 9 hook cath slides, 2 shelves, 4 dividers, glass doors
42580HGCATSH	18 x 36 x 84	Bxd balloon/guide wire cabinet, 5 adj shelves, 25 dividers, glass doors
42680HGCATSH	18 x 42 x 84	Bxd balloon/guide wire cabinet, 5 adj shelves, 35 dividers, glass doors
42780HGCATSH	18 x 48 x 84	Bxd balloon/guide wire cabinet, 5 adj shelves, 45 dividers, glass doors
44580HGCATSH	26 x 36 x 84	Bxd balloon/guide wire cabinet, 5 adj shelves, 25 dividers, glass doors
44680HGCATSH	26 x 42 x 84	Bxd balloon/guide wire cabinet, 5 adj shelves, 35 dividers, glass doors
42580HGCATB	18 x 36 x 84	Bxd cath cabinet, roll-out cath box, top shelf, 5 dividers, glass doors
44580HGCATB	26 x 36 x 84	Bxd cath cabinet, roll-out cath box, top shelf, 5 dividers, glass doors

Stainless Steel Cabinets

Tall Cabinets, Flat Pan Base, 5 Adjustable Shelves

MODEL #	OUTER DIMENSIONS (D x W x H inches)	DESCRIPTION
42460HG	18 x 30 x 64	Glass doors
42560HG	18 x 36 x 64	Glass doors
42760HG	18 x 48 x 64	Glass doors
43460HG	24 x 30 x 64	Glass doors
43560HG	24 x 36 x 64	Glass doors
43760HG	24 x 48 x 64	Glass doors
42270LG	18 x 24 x 72	Left glass door
42270RG	18 x 24 x 72	Right glass door
42570HG	18 x 36 x 72	Glass doors
42770HG	18 x 48 x 72	Glass doors
43270LG	24 x 24 x 72	Left glass door
43270RG	24 x 24 x 72	Right glass door
43570HG	24 x 36 x 72	Glass doors
43770HG	24 x 48 x 72	Glass doors
42280LG	18 x 24 x 84	Left glass door
42280RG	18 x 24 x 84	Right glass door
42380LG	18 x 27 x 84	Left glass door
42380RG	18 x 27 x 84	Right glass door
42580HG	18 x 36 x 84	Glass doors
42680HG	18 x 42 x 84	Glass doors
42780HG	18 x 48 x 84	Glass doors
43280LG	24 x 24 x 84	Left glass door
43280RG	24 x 24 x 84	Right glass door
43580HG	24 x 36 x 84	Glass doors
43780HG	24 x 48 x 84	Glass doors
44180LG	26 x 18 x 84	Left glass door
44180RG	26 x 18 x 84	Right glass door
44280LG	26 x 24 x 84	Left glass door
44280RG	26 x 24 x 84	Right glass door
44580HG	26 x 36 x 84	Glass doors
44680HG	26 x 42 x 84	Glass doors
44780HG	26 x 48 x 84	Glass doors

Stainless Steel Wall Cabinets, 1 Adjustable Shelf

MODEL #	OUTER DIMENSIONS (D x W x H inches)	DESCRIPTION
41120LG	13 x 18 x 30	Left glass door
41120RG	13 x 18 x 30	Right glass door
41220LG	13 x 24 x 30	Left glass door
41220RG	13 x 24 x 30	Right glass door
41420HG	13 x 30 x 30	Glass doors
41520HG	13 x 36 x 30	Glass doors
41620HG	13 x 42 x 30	Glass doors
41720HG	13 x 48 x 30	Glass doors



Stainless Steel Cabinets

SS Floor Cabinets with Cell System

MODEL #	OUTER DIMENSIONS (D x W x H inches)	DESCRIPTION
44131LS	26 x 19.5 x 33	Single column, cells, left solid door
44131RS	26 x 19.5 x 33	Single column, cells, right solid door
44532S	26 x 36 x 33	Double column, cells, solid doors



SS Floor Cabinets, 1 Adjustable Shelf

MODEL #	OUTER DIMENSIONS (D x W x H inches)	DESCRIPTION
44130LS	26 x 18 x 33	1 adjustable shelf, left solid door
44130RS	26 x 18 x 33	1 adjustable shelf, right solid door
44230LS	26 x 24 x 33	1 adjustable shelf, left solid door
44230RS	26 x 24 x 33	1 adjustable shelf, right solid door
44430S	26 x 30 x 33	1 adjustable shelf, solid doors
44530S	26 x 36 x 33	1 adjustable shelf, solid doors
44630S	26 x 42 x 33	1 adjustable shelf, solid doors
44730S	26 x 48 x 33	1 adjustable shelf, solid doors



SS Floor Cabinets, Drawer Cabinets

MODEL #	OUTER DIMENSIONS (D x W x H inches)	DESCRIPTION
44130LS-1D	26 x 18 x 33	1 drawer, 1 adjustable shelf, left solid door
44130RS-1D	26 x 18 x 33	1 drawer, 1 adjustable shelf, right solid door
44230LS-1D	26 x 24 x 33	1 drawer, 1 adjustable shelf, left solid door
44230RS-1D	26 x 24 x 33	1 drawer, 1 adjustable shelf, right solid door
44130-4D	26 x 18 x 33	4 drawers
44230-4D	26 x 24 x 33	4 drawers

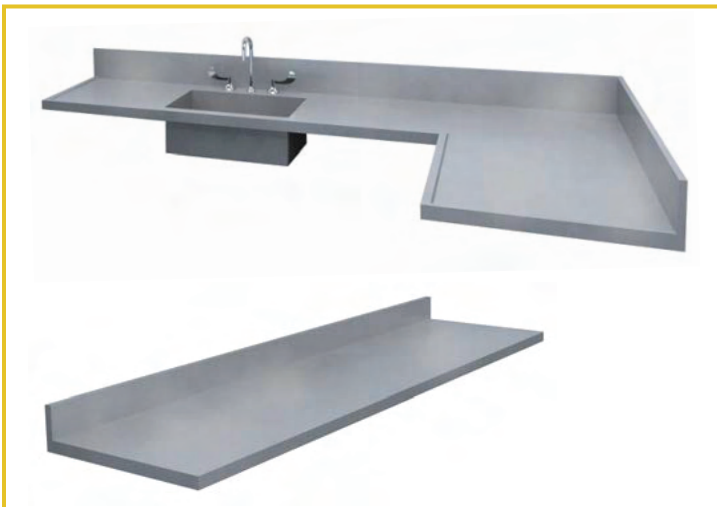
SS Floor Cabinets, Sink Cabinets

MODEL #	OUTER DIMENSIONS (D x W x H inches)	DESCRIPTION
44230S-SNK	26 x 24 x 33	No shelf, solid doors, basin not included
44430S-SNK	26 x 30 x 33	No shelf, solid doors, basin not included
44530S-SNK	26 x 36 x 33	No shelf, solid doors, basin not included

Casework Accessories

Counter Tops

Counter tops are fabricated from 14 gauge (.075") 300 series stainless steel. The underside is reinforced with channels, sink included. Marine edges are provided for counter tops containing sinks. Sinks are fabricated (not drawn) from 14 gauge (.075") 300 series stainless steel with a 5/16" cove corner, laser etched gallon markings, positive pitch towards drain, and are integrally welded to top. A 4" backsplash is standard with optional side splashes. Please consult MAC Medical for custom sizes meeting any and all architectural requirements. Counter tops are fabricated in one piece where design and materials permit.



All counter tops are sold separately and installed by others along with any plumbing fixtures

Sloping Tops



STANDARD FEATURES

- Type 300 series stainless steel
- 25° slope angle

Wall Shelves



STANDARD FEATURES

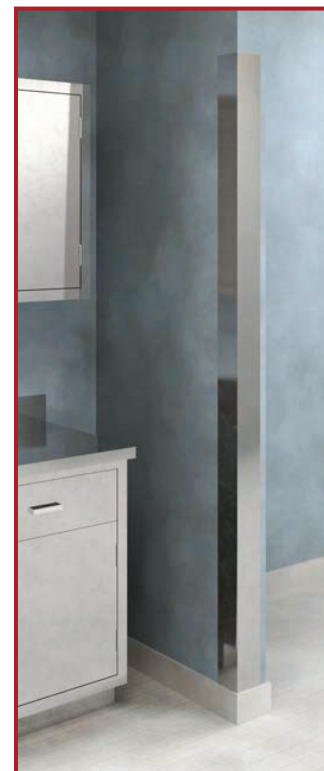
- Type 300 series stainless steel
- 1" lip on back
- Pre-punched for easy wall mounting (mounting hardware not included)

Operating Room Bases - 12" High

STANDARD FEATURES

- Type 300 series stainless steel

Corner Guards



STANDARD FEATURES

- Free standing
- Fully welded construction
- Configuration includes wall cabinet, base cabinet, and tower cabinet (tower cabinet can be configured on either side)
- Magnetic door catches
- Stainless steel adjustable shelves
- Standard handles
- Integrated wire management system
- Full CAD renderings
- Engineered room layouts in CAD based on customer provided drawings
- Multiple layouts for individual requirements
- Swivel desk with (2) 5" swivel casters



OPTIONAL FEATURES

- CuVerro® antimicrobial copper alloy handle(s)
- Stainless steel doors
- Glass hinged doors
- Vented doors for electronics
- No doors
- Pull out writing surface
- Pull out bottom shelf for easy PC install
- Heavy duty pull out drawers
- Key lock
- Tee handles
- Tee handles with key lock
- Electronic keypad door locks
- Pegboard back
- Sloping top (height varies on depth)
- Variable height bases

Nurses Documentation Stations

BASE MODEL #	OUTER DIMENSIONS (D x W x H inches)	UNIT CONFIGURATION
NDS908430	30 x 90 x 84	Wall Cabinet (13"D x 48"W x 30"H) Base Cabinet (30"D x 24"W x 32.5"H) Tower Cabinet (30"D x 42"W x 84"H) Counter Top (30"D x 48"W x 36"H) Swivel Desk (22"D x 42"W x 34"H)

*Additional sizes available for specific requirements; please contact us for further assistance
Additional shelving available for purchase, shelving adjusts in 1 1/2" increments
Model # will change based on features added*



Shown with optional sloping top

Mobile Cabinets

STANDARD FEATURES

- Fully welded construction
- Glass hinged doors
- Stainless steel adjustable shelves
- Standard 4" pull handle
- 4" casters (2 swivel & 2 locking)
- Pull out drawers
- Flat top

OPTIONAL FEATURES

- CuVerro® antimicrobial copper alloy handles
- Sloping top
- No doors
- Push handles
- Non-marring bumper
- Cam lock
- Tee handles
- Tee handles with key lock
- Electronic keypad door lock
- Pegboard back

Stainless Steel Moveable Cabinetry with Built-In Cell System

MODEL #	OUTER DIMENSIONS (D x W x H inches)	DESCRIPTION
22381SSLG	18 x 27 x 82.5	Single, 23 cells, left glass door
22381SSRG	18 x 27 x 82.5	Single, 23 cells, right glass door
22581SSHGLC	18 x 36 x 82.5	Single, 20 cells left, (5) 8" shelves right, 5 dividers, glass doors
22581SSHGRC	18 x 36 x 82.5	Single, 20 cells right, (5) 8" shelves left, 5 dividers, glass doors
22681SSHGLC	18 x 42 x 82.5	Single, 20 cells left, (5) 14" shelves right, 7 dividers, glass doors
22681SSHGRC	18 x 42 x 82.5	Single, 20 cells right, (5) 14" shelves left, 7 dividers, glass doors
24181SSLG	26 x 18 x 82.5	Single, 23 cells, left glass door
24181SSRG	26 x 18 x 82.5	Single, 23 cells, right glass door
24581SSHG	26 x 36 x 82.5	Single, 23 cells, full width, single, glass doors
24582SSHG	26 x 36 x 82.5	Double, 46 cells, glass doors
24883SSHG	26 x 54 x 82.5	Triple, 69 cells, glass doors



24582SSHG

integrated dolly base with optional cath slides and shelves

STANDARD FEATURES

- Roll in stock ready for use
- Full stainless construction
- Mobile system, full bumper or internal dolly base
- Sloped tops
- Hi-density, modular cell system



24883SSHG

Full Wraparound Bumper System

OPTIONAL FEATURES

- SS solid shelves, or epoxy coated
- Wire basket 3", 5", 8" deep
- Plastic tubs 3", 5", 8" deep
- Full divider systems
- Catheter racks
- Slanted shelves
- Suture system

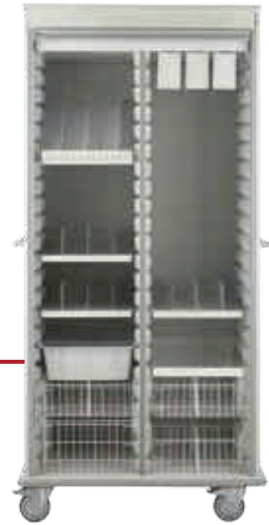
LogiCell Room Carts

Fully Loaded for each OR Service

- Carts come complete with pictured accessories
- Dividers included with most tubs, baskets and shelves
- Units shown with tambour door
- Hinged glass doors available on double & triple carts
- Double carts: 28"D x 40"W x 80"H
- Triple carts: 28"D x 57"W x 80"H



2652VASC
Vascular Cart



2652CYSTO
Cysto Cart



2652CARD
Cardiac Cart



2652ARTH
Arthroscopy Cart



2652NEU
Neuro Cart



2652OPHENT
Ophthalmology
/ ENT Cart



2652LAP
Laparoscopy
Cart



2652ORTH
Ortho Cart

LogiCell Room Carts



2653VASC
Vascular Cart



2653ARTH
Arthroscopy
Cart



2653CYSTO
Cysto Cart



2653CARD
Cardiac Cart



2653PACK
Drape
/Pack Cart



2653STAP
Staple Cart



2653ORTH2
Ortho Cart



2653ORTH1
Ortho Cart



2653LAP
Laparoscopy
Cart

Standard QT Carts

MODEL #	OVERALL SIZE (D x W x H inches)	DRAWER SIZE (Drawer - inches)	DRAWER SIZE (D x W inches)	SERIES
34Q	20 x 27 x 34	2-3, 1-6, 1-9	15.75 x 24	T
37Q	21 x 20 x 37	2-3, 2-6, 1-9	15.75 x 14	TN
40Q	20 x 27 x 40	2-3, 2-6, 1-9	15.75 x 24	T



34Q



40Q



37Q

Equipment Cart

MODEL #	OVERALL SIZE (D x W x H inches)	DRAWER SIZE (Drawer - inches)	DRAWER SIZE (D x W inches)	WORKTOP SIZE (D x W inches)	SERIES
PK3366-WH	24 x 20 x 34.5 - 46.5	2-3, 2-6	10.75 x 14	14 x 18	T



PK3366-WH

Front Adjustable Pedal

Modular Divider Sets

One 3" H and one 6" H included with each cart

MODEL #	DESCRIPTION
AD3	3" Adjustable divide set
N-AD3	Narrow cart set (3 x short + 6 x adjustable + 2 x 3" strip + 6 x T clips)
AD6	6" Adjustable divide set
N-AD6	Narrow cart set (3 x short + 4 x adjustable + 2 x 6" strip + 4 x T clips)



AD3



AD6

QT Carts / Equipment Carts

QT Cart Special Features

Included with each Cart



Soft Return, silent closing drawers



ABS top surface
Light, easy to clean



5" Medical grade quiet poly caster with brake

Sliding table top extension
Max load 17 lbs.



Central lock
secures all drawers



Optional eLock system

Stock Accessories



VMS *
Multi Storage
Basket and Rail



VFH *
File Holder and Rail



VGD *
Glove Box Holder
and Rail



VIV
IV Pole



CPD
Computer Drawer



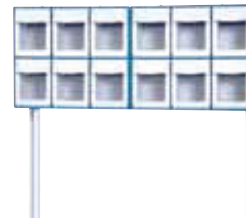
P-ABTRELLIS
Trellis



VBS-1
Small Fixed Bins



VTB-1
Large Tilt Bins
(5 bins)



VTB-2
Medium Tilt Bins
(12 bins)



VGB *
Garbage Can
with Lid

VWB *
Open Waste
Bin (not
pictured)

* Accessories requiring #VAB accessory bar; VAB bar included with item



SH0832

Stationary Wall Shelves

STANDARD FEATURES

- Stainless steel construction
- Pre-drilled for easy wall mounting (mounting hardware not included)

OPTIONAL FEATURES

- Bullnose front

MODEL #	OUTER DIMENSIONS (D x W inches)	BRACKETS
SH0624	6 x 24	2
SH0630	6 x 30	2
SH0824	8 x 24	2
SH0830	8 x 30	2
SH0832	8 x 32	3
SH0836	8 x 36	3
SH1224	12 x 24	2
SH1236	12 x 36	3
SH1248	12 x 48	3
SH1260	12 x 60	4

Additional sizes available for specific requirements; please contact us for further assistance



FWS1836

STANDARD FEATURES

- Stainless steel construction
- Fold down shelf
- Marine edge
- Pre-drilled for easy wall mounting (mounting hardware not included)

OPTIONAL FEATURES

- Bullnose front

Fall Down Wall Shelves

MODEL #	OUTER DIMENSIONS (D x W inches)	BRACKETS
FWS1224	12 x 24	2
FWS1236	12 x 36	2
FWS1248	12 x 48	2
FWS1824	18 x 24	2
FWS1836	18 x 36	2
FWS1848	18 x 48	2

Additional sizes available for specific requirements; please contact us for further assistance

Pass Through Windows

BASE MODEL #	OVERALL DIMENSIONS (W x H inches)
PTW0001	37.5 x 34.5 (no shelf)
PTW0002	37.5 x 34.5 (shelf included)
PTW0003	24 x 34.5 (no shelf)

*Additional sizes available for specific requirements;
please contact us for further assistance
Model # will change based on features added*



PTW0002

STANDARD FEATURES

- 3/16" tempered glass
- Adjustable width for wall thickness (between 4" - 6")
- 4-sided gasket
- Dual swing hinge with adjustable spring tension

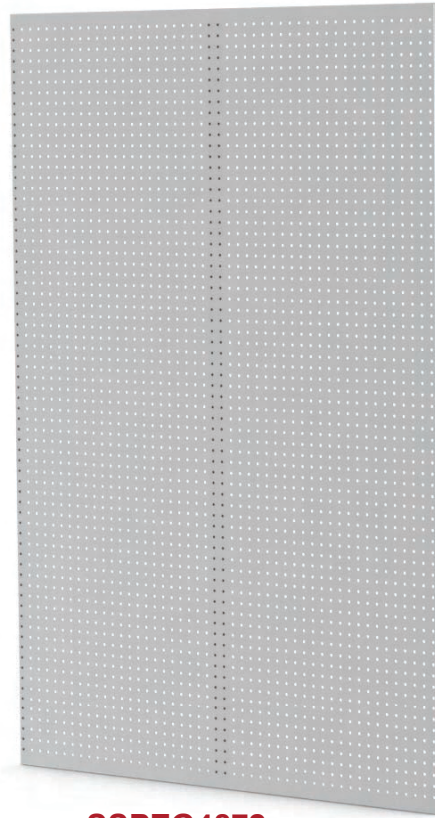
OPTIONAL FEATURES

- CuVerro antimicrobial copper alloy handles
- Decontamination side shelf (various sizes)
- Clean side shelf (various sizes)

Peg Boards

STANDARD FEATURES

- 16 gauge stainless steel construction (1/16" thickness, 5/8" overall thickness from wall)
- 1/4" diameter holes on 1" center
- Key hole slots for mounting (mounting hardware not included)
- Can be mounted vertically or horizontally



SSPEG4872

Standard Models

MODEL #	OVERALL DIMENSIONS (W x H inches)
SSPEG2436	24 x 36
SSPEG3636	36 x 36
SSPEG3648	36 x 48
SSPEG4248	42 x 48
SSPEG4848	48 x 48
SSPEG4872	48 x 72
SSPEG4896	48 x 96

Additional sizes available for specific requirements; please contact us for further assistance

Standard Hooks

MODEL #	HOOK SIZE (Inches)
IC0128-01	3-3/32" stainless steel single peg board hook (fits 3/16" and 1/4" diameter holes)
IC0128-02	5-3/16" stainless steel single peg board hook (fits 3/16" and 1/4" diameter holes)
IC0128-03	8-3/4" stainless steel single peg board hook (fits 3/16" and 1/4" diameter holes)
IC0901	8" stainless steel single peg board hook (1/4" diameter holes)
IC0128-05	9" stainless steel single peg board hook (1/4" diameter holes)

All hooks are compatible with all peg board models and are sold separately



IC0901

Par Wall and Par Stor-III

PAR WALL

LEAN AND CLEAN STORAGE

Wall-Mount or Freestanding Dozens of Customized Configurations
Keep Supplies Organized and Accessible



OR Sterile Storage - Wall Mount Units

PAR STOR

HIGH - DENSITY

All Vertical Space is Used
Organized and Compartmentalized
Wire Minimizes Dust



Row of Supplies in Reprocessing



Par Stor, ParWall, and Container Carts in OR Core



Organized Single Instrument and General Storage



Par Stor

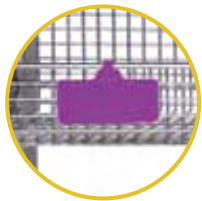
Par Stor Complete Standard Module:

Complete with 2 frames, 4 cross bars, top wire basket, and from top: 1-3”H basket on sloping slides with safety stop with 2 long and 2 short dividers; 5-5”H baskets each with 1 long and 2 short dividers; 1-5”H drawer with 2 long and 2 short dividers; 1-8”H basket with 1 long and 1 short divider; All on full-extension slides. Bottom dust cover and 4-4”H casters, 2 with brakes. 25 model #LH3 label tags included.

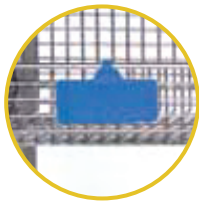
MODEL #	OUTER DIMENSIONS (D x W x H inches)	DESCRIPTION
PARSTOR-III	24 x 20 x 75	Par Stor complete unit, starter, 7 baskets, 1 drawer
PARSTADD-III	24 x 19 x 75	Par Stor complete unit, add-on, 7 baskets, 1 drawer

Add-On Units have all above components except with 1 frame only

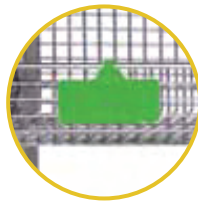
Colour Coded Label Options



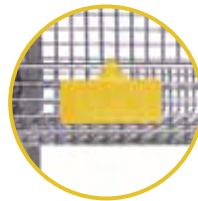
LH3-PURPLE



LH3-BLUE



LH3-GREEN



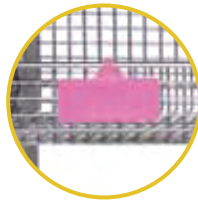
LH3-YELLOW



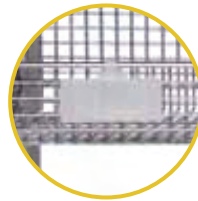
LH3-ORANGE



LH3-RED



LH3-PINK



LH3-CLEAR



PARSTOR-III



Par Stor Container Storage Module:

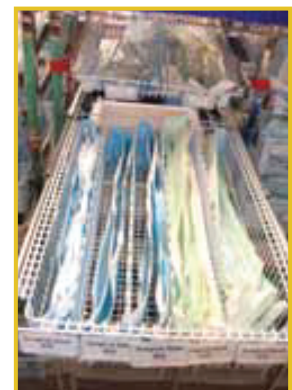
Complete with 2 frames, 4 cross bars, 7 wire shelves on slides. Bottom dust cover and 4 - 4” swivel casters, two with brakes.



PS-CSS1-III

Par Stor Peel Pouch Storage Module:

Complete with 2 frames, 4 cross bars, 7 - 5”H wire baskets on full extension slides, 36 short dividers, 10 long dividers, 168 label tags, bottom dust cover and 4”H casters, two with brakes.



PSIR-III

Par Wall



PARWALL36-W
(group of 4)



P3619B panel attached to **LP3674FSG** panel using **PWBRACKET3619**
Baskets / hook optional

Par Wall Wall-Mount Complete Units - 6 Baskets:

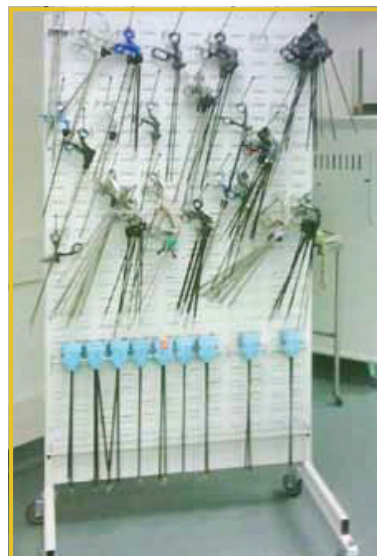
Complete with 1 panel, 1 bottom solid dust shelf, 2-18”D large mesh baskets, 1-18”D fine mesh basket, 3-12”D fine mesh baskets. Each basket complete with mounting brackets, 5 front / back dividers and full-length label holders.

MODEL #	OUTER DIMENSIONS (D x W x H inches)	DESCRIPTION
PARWALL18-W	18 x 19 x 61	Complete wall-mount unit, 6 baskets
PARWALL36-W	18 x 37 x 61	Complete wall-mount unit, 6 baskets

Panel Mount Bracket Kits for Frame:

Epoxy coated steel cross frames for mounting louvered panels to freestanding frames. Brackets and hardware (nuts, bolts) included. Panels not included.

MODEL #	DESCRIPTION
PWBRACKET1819	Par Wall panel / frame Bracket 18”W (set of 2) for P1819B panel
PWBRACKET1861	Par Wall panel / frame Bracket 18”W (set of 4) for P1861B panel
PWBRACKET3619	Par Wall panel / frame Bracket 36”W (set of 2) for P3619B panel
PWBRACKET3661	Par Wall panel / frame Bracket 36”W (set of 4) for P3661B panel



PARWALL36-INST

Bulk Instrument. Storage for large, odd shaped instruments. Hooks ordered separately.

A Simple Solution for Storing Large, Irregular Shaped Items with Ease

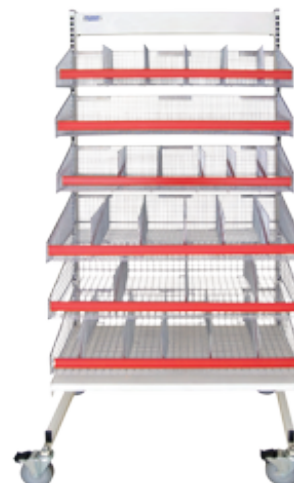
**Maximum Storage
Minimum Footprint**

Par Wall Complete Units

6 Baskets - Par Wall Single - Sided Stationary and Mobile Complete Units:

Complete with 1 frame, 1 bottom dust shelf, 2-18"D large mesh baskets, 1-18"D fine mesh basket, 3-12"D fine mesh baskets. Each basket complete with mounting brackets, 5 front / back dividers and full-length label holders. Add-on units have frames with 1 upright only.

MODEL #	OUTER DIMENSIONS (D x W x H inches)	DESCRIPTION
PARWALL18	18 x 18 x 74	Par Wall complete unit, 6 baskets
PARWALL18M	26 x 18 x 78	Par Wall complete unit, 6 baskets, mobile
PARWALL18-A	18 x 18 x 74	Par Wall complete unit, 6 baskets, add-on
PARWALL18-AM	26 x 18 x 78	Par Wall complete unit, 6 baskets, add-on, mobile
PARWALL36	18 x 36 x 74	Par Wall complete unit, 6 baskets
PARWALL36M	26 x 36 x 78	Par Wall complete unit, 6 baskets, mobile
PARWALL36-A	18 x 36 x 74	Par Wall complete unit, 6 baskets, add-on
PARWALL36-AM	26 x 36 x 78	Par Wall complete unit, 6 baskets, add-on, mobile



PARWALL36M

7 Baskets - Par Wall Single - Sided Stationary and Mobile Complete Units:

Complete with 1 frame, 1 bottom dust shelf, 2-18"D large mesh baskets, 1-18"D fine mesh basket, 4-12"D fine mesh baskets. Each basket complete with mounting brackets (top basket to have slanted brackets) 5 front/back dividers and full-length label holders. Add-on units have frames with 1 upright only.

MODEL #	OUTER DIMENSIONS (D x W x H inches)	DESCRIPTION
PARWALL187	18 x 18 x 74	Par Wall complete unit, 7 baskets
PARWALL187M	26 x 18 x 78	Par Wall complete unit, 7 baskets, mobile
PARWALL187-A	18 x 18 x 74	Par Wall complete unit, 7 baskets, add-on
PARWALL187-AM	26 x 18 x 78	Par Wall complete unit, 7 baskets, add-on, mobile
PARWALL367	18 x 36 x 74	Par Wall complete unit, 7 baskets
PARWALL367M	26 x 36 x 78	Par Wall complete unit, 7 baskets, mobile
PARWALL367-A	18 x 36 x 74	Par Wall complete unit, 7 baskets, add-on
PARWALL367-AM	26 x 36 x 78	Par Wall complete unit, 7 baskets, add-on, mobile



PARWALL36-DBM

12 Baskets - Par Wall Double - Sided Stationary and Mobile Complete Units:

Complete with 1 double-sided frame, 2 bottom dust shelves, 4-18"D large mesh baskets, 2-18"D fine mesh basket, 6-12"D fine mesh baskets. Each basket complete with mounting brackets, 5 front / back dividers and full-length label holders.

MODEL #	OUTER DIMENSIONS (D x W x H inches)	DESCRIPTION
PARWALL36-DB	36 x 18 x 74	Par Wall complete unit, double sided, 12 baskets
PARWALL36-DBM	40 x 18 x 78	Par Wall complete unit, double sided, 12 baskets, mobile



PARWALL367

"M" mobile units complete with mobile kit and hardware. 4 x 4" swivel casters, two with brakes.

Conventional Storage Carts

Acart has a huge range of conventional wire products. Here is a glimpse of popular mobile wire shelving units used in OR and reprocessing. For our full range of products please refer to our full wire catalog.

Standard Unit Components

- 4 each 74”H posts
- 5 wire shelves with split sleeves
- 5” swivel non-marking polyurethane casters
- Donut bumpers

“Complete” Unit Accessories (-CL)

- 5 full-length 3-position label holders
- Bottom shelf cover, solid, flat, poly

Other Standard Sizes Available

- Depths: 14” and 21”
- Widths: 24”, 30”, 42” and 54”
- Posts: 54”, 63” and 86”

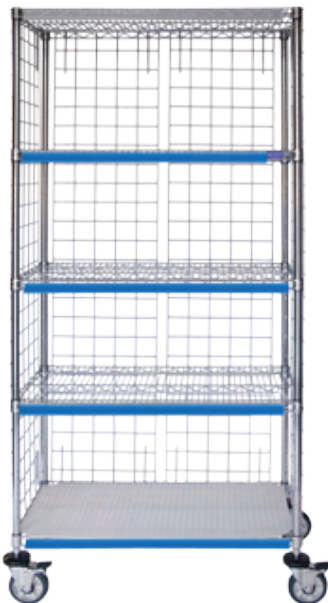
Weight Capacity

- 5” casters. 250 lbs. capacity each
Total cart 750 lbs. capacity

Open Units 5 Shelf Complete with:

- 4 swivel casters (2 with brakes)
- 1 solid bottom shelf cover
- 5 full-length 3-position label holders

DIMENSIONS (D x W x H inches)	WEIGHT (lbs)	MODEL # Chrome Plus	MODEL # Duro Seal
18 x 36 x 80	75	MB835CH-CL	MB835PW-CL
18 x 48 x 80	89	MB855CH-CL	MB855PW-CL
18 x 60 x 80	110	MB865CH-CL	MB865PW-CL
18 x 72 x 80	117	MB875CH-CL	MB875PW-CL
24 x 36 x 80	94	MB435CH-CL	MB435PW-CL
24 x 48 x 80	113	MB455CH-CL	MB455PW-CL
24 x 60 x 80	138	MB465CH-CL	MB465PW-CL
24 x 72 x 80	149	MB475CH-CL	MB475PW-CL



DIMENSIONS (D x W x H inches)	WEIGHT (lbs)	MODEL # Chrome Plus	MODEL # Duro Seal
18 x 36 x 80	115	MEB835CH-CL	MEB835PW-CL
18 x 48 x 80	137	MEB855CH-CL	MEB855PW-CL
18 x 60 x 80	165	MEB865CH-CL	MEB865PW-CL
18 x 72 x 80	178	MEB875CH-CL	MEB875PW-CL
24 x 36 x 80	141	MEB435CH-CL	MEB435PW-CL
24 x 48 x 80	168	MEB455CH-CL	MEB455PW-CL
24 x 60 x 80	200	MEB465CH-CL	MEB465PW-CL
24 x 72 x 80	217	MEB475CH-CL	MEB475PW-CL

Enclosed units 5 Shelf Complete with:

- 4 swivel casters (2 with brakes)
- 1 solid bottom shelf cover
- 5 full-length, 3-position label holders

Suture / Lens / Implant Carts



Single Sided Suture / Lens / Implant Carts Include

- 4 posts 63”H
- 4 (or 5 - see table) slanted baskets each with label holders
- Bottom wire shelf with solid shelf cover. (for infection control)
- 4-5” swivel casters with donut bumpers, two with brakes

MODEL #	OUTER DIMENSIONS (D x W x H inches)	DESCRIPTION
SL424CH	18 x 24 x 69	4-level 24” single-sided suture cart
SL436CH	18 x 36 x 69	4-level 36” single-sided suture cart
SL448CH	18 x 48 x 69	4-level 48” single-sided suture cart
SL524CH	18 x 24 x 69	5-level 24” single-sided suture cart
SL536CH	18 x 36 x 69	5-level 36” single-sided suture cart
SL548CH	18 x 48 x 69	5-level 48” single-sided suture cart
SL24CH	18 x 24 x 10	Individual 24” single sided suture basket
SL36CH	18 x 36 x 10	Individual 36” single sided suture basket
SL48CH	18 x 48 x 10	Individual 48” single sided suture basket

Double Sided Suture / Lens / Implant Carts Include



- 4 posts 63”H
- 4 (or 5- see table) slanted baskets each with label holders on both sides
- Bottom wire shelf with solid shelf cover (for infection control). Top wire shelf
- End enclosure panels of 3” x 3” wire mesh
- 4-5” swivel casters with donut bumpers, two with brakes

MODEL #	OUTER DIMENSIONS (D x W x H inches)	DESCRIPTION
STR424CH	24 x 24 x 69	4-level 24” double-sided suture cart
STR436CH	24 x 36 x 69	4-level 36” double-sided suture cart
STR448CH	24 x 48 x 69	4-level 48” double-sided suture cart
STR524CH	24 x 24 x 69	5-level 24” double-sided suture cart
STR536CH	24 x 36 x 69	5-level 36” double-sided suture cart
STR548CH	24 x 48 x 69	5-level 48” double-sided suture cart
STR24CH	24 x 24 x 69	Individual 24” double sided suture basket
STR36CH	24 x 36 x 10	Individual 36” double sided suture basket
STR48CH	24 x 48 x 10	Individual 48” double sided suture basket



AF Basket Cart System

MODEL #	OUTER DIMENSIONS (D x W x H inches)	DESCRIPTION
AF008CH	18 x 24 x 80	Complete IV cart 24"- 2 shelves, 6 baskets, 12 dividers
AF009CH	18 x 36 x 80	Complete IV cart 36"- 2 shelves, 6 baskets, 18 dividers
AF010CH	18 x 48 x 80	Complete IV cart 48"- 2 shelves, 6 baskets, 24 dividers
DV2010CH	18 x 6	Wire basket divider standard, 18"
AF2008CH	24 x 24 x 80	Complete IV cart 24"- 2 shelves, 6 baskets, 12 dividers
AF2009CH	24 x 36 x 80	Complete IV cart 36"- 2 shelves, 6 baskets, 18 dividers
AF2010CH	24 x 48 x 80	Complete IV cart 48"- 2 shelves, 6 baskets, 24 dividers
CFDIV246	24 x 6	Wire basket divider standard, 24"
CFDIV248	24 x 8	Wire basket divider standard, 24"
AF408CH	18 x 24 x 80	Combo cart 24"- 3 shelves, 4 baskets, 8 basket dividers
AF508CH	18 x 24 x 80	Combo cart 24"- 2 shelves, 5 baskets, 10 basket dividers
AF409CH	18 x 36 x 80	Combo cart 36"- 3 shelves, 4 baskets, 12 basket dividers
AF509CH	18 x 36 x 80	Combo cart 36"- 2 shelves, 5 baskets, 15 basket dividers
AF410CH	18 x 48 x 80	Combo cart 48"- 3 shelves, 4 baskets, 16 basket dividers
AF510CH	18 x 48 x 80	Combo cart 48"- 2 shelves, 5 baskets, 20 basket dividers
AF020CH	18 x 48 x 80	Combo cart 48"- 2 shelves, 5 baskets, 10 basket dividers
AF411CH	18 x 48 x 80	Combo cart 48"- 3 shelves, 4 baskets, 20 basket dividers
AF511CH	18 x 48 x 80	Combo cart 48"- 2 shelves, 5 baskets, 25 basket dividers
AF2408CH	24 x 24 x 80	Combo cart 24"- 3 shelves, 4 baskets, 8 basket dividers
AF2508CH	24 x 24 x 80	Combo cart 24"- 2 shelves, 5 baskets, 10 basket dividers
AF2409CH	24 x 36 x 80	Combo cart 36"- 3 shelves, 4 baskets, 12 basket dividers
AF2509CH	24 x 36 x 80	Combo cart 36"- 2 shelves, 5 baskets, 15 basket dividers
AF2410CH	24 x 48 x 80	Combo cart 48"- 3 shelves, 4 baskets, 16 basket dividers
AF2510CH	24 x 48 x 80	Combo cart 48"- 2 shelves, 5 baskets, 20 basket dividers
AF2020CH	24 x 48 x 80	Combo cart 48"- 2 shelves, 5 baskets, 10 basket dividers
AF2411CH	24 x 48 x 80	Combo cart 48"- 3 shelves, 4 baskets, 20 basket dividers
AF2511CH	24 x 48 x 80	Combo cart 48"- 2 shelves, 5 baskets, 25 basket dividers



part number?



DV2010CH



CFDIV246

Basket / IV Solution Carts - Highest Density in the Market

- 4 posts 74"H
- Open front wire baskets & shelves. "SB style"
- Each basket complete with label holders and set # of dividers
- Bottom wire shelf with solid shelf cover. Top wire shelf
- 4-5" swivel casters with donut bumpers, two with brakes



Acceptance

All orders subject to acceptance of Terms and Conditions of sale, regardless of the form in which submitted. All orders are quoted F.O.B. Galesburg, Michigan unless stated otherwise. Custom manufactured products may be subject to a deposit at the time of order.

Order Confirmation

To avoid duplication of shipment, the word "CONFIRMATION" or "CONFIRMING" should appear on all documents which are sent to confirm orders placed by telephone, fax or any other way.

Warranty Statement

Acart equipment is warranted to be free from defective material and workmanship under normal use and service for a period of one year from date of shipment to customer. During this period, Acart will repair or replace (at its option) without charge, F.O.B. plant of manufacture, the equipment or any part thereof which factory inspection discloses to be defective. Shipments of defective material for repair must be sent prepaid.

Returned Goods Policy

1. All returns must be authorized.
2. Each request must include the following:
 - A. Customer name and address
 - B. Invoice number
 - C. Invoice date
 - D. Customer P.O. number
 - E. Quantity, catalog number and description of item
 - F. Reason for return
3. Upon receipt of your request, a return authorization number will be issued and this must be clearly referenced with your return.
4. The return shipment must be coordinated with a customer service representative, who will advise the proper mode of transport for the return.
5. Returned goods may be subject to a minimum 20% handling charge based on state, condition of goods and reason for return.
6. Returns will NOT be authorized for the following:
 - A. Items purchased on a "special order" basis (unless original vendor will accept the return)
 - B. Items that are custom manufactured
 - C. Partial units of sale
 - D. Items without original packaging materials
7. Returns must be prepaid and within 10 days of original shipment.

Terms

Minimum order \$50.00. Terms are Net 30 days (subject to credit approval). An annual service charge of 24% will be assessed on past due accounts.

Shipments

Shipments will be made F.O.B. shipping point and the buyer assumes responsibility for all damages in transit. Such damages must be declared at time of receipt, directly on the shipping documents, and claims must be filed immediately with the transport company. If after receipt of shipment, concealed damage is discovered, immediately notify the delivering carrier requesting an inspection. The inspection report should be used to support your claim against the carrier. Any claim for damage or shortage must be filed by you with the delivering carrier. Unless a preferred routing is specified at the time of order, shipment will be made the best way, transportation prepaid and added to invoice.

Installation

Installation of cabinets: Must be in compliance with all state and local code regulations and should be performed by experienced and qualified tradespeople. For best long term results and proper functioning of the cabinet doors and latches, the cabinets must be installed plumb and squarely true with adjoining cabinets. Compliance with all state and local regulations relative to anchoring cabinets should be confirmed by the appropriate hospital staff. Improper installation, or failure to comply with state and local regulations, may result in failure of the product and denial of potential warranty claims.

Specifications

All dimensions and shipping weights are approximate. Acart reserves the right to change specifications or substitute products of equal specifications without notice. The company also reserves the right to cease manufacturing or distribution of any product without notice. Manufacturer's specifications and prices are subject to change without notice.

Freight Classification

Freight Class is product specific and may vary from CL70 to CL250.

Index

A

Accessories, Case Carts	4, 8
Adjustable Work Tables	24 - 28
Assembly Carts	10

B

Back Tables	21
Basket / IV Carts	56
Basin Stands	13
Buckets, Kick	13

C

Carts, QT Specialty	45 - 46
Cabinets, Mobile, Stainless Steel	41 - 42
Cabinets, Nurse Documentetion Station	40
Cabinets, Stainless Steel Storage	33 - 35
Cabinets, Wall & Base	36 - 38
Case Carts, Closed	3 - 5
Case Carts, Open	7 - 8
Case Carts, Over The Road	6
Casters, Stainless Steel Case Cart	4

D

Decontamination Sinks	28 - 29
-----------------------	---------

F

Fluid Warming Cabinets	31 - 35
Floor Track Storage System	46 - 47

H

Hampers, Linen	18
----------------	----

I

Instrument - Back Tables	21
IV Poles	19 - 20

K

Kick Buckets	13
--------------	----

L

Label Holders, Par Stor / Par Wall	50 - 53
Label Holders, Wire	54
Lens Carts	55
Linen Hampers	18
LogiCell Carts	42 - 44

M

Mayo Stands	14
-------------	----

N

Nesting Back Tables	23
Nurse Documenation Stations	40

O

Ortho / Implant Carts	55
Over The Road / Offsite Carts	6

P

Processing Sinks	28 - 29
Par Cart System - Ortho	11
Par Stor Storage System	51
Par Wall Storage System	52 - 63
Pass Through Windows	48
Par Stor Modules	51
Peel Pouch Storage	51
Pick Carts	11
Peg Boards	49

R

Ring Stands	13
-------------	----

S

Scrub Sinks	30 - 32
Seating, Surgeon	16 - 17
Shelving, Mobile Wire	54
Sterilizer Carts	9
Sinks, Processing	28 - 29
Slanted Shelf Carts	55
Solution / IV Carts	56
Step Stools	15
Suture Carts	55

T

Tables, Back	21
Tables, Utility	22
Tables, Work	23
Tables, Adjustable	24 - 27

U

Utility Tables	22
----------------	----

W

Wall Shelves	47
Work Table (Stations)	25 - 27
Wrap Carts	10

