

ACART



Product Guide

Plastic Bins and Containers

Table of Contents

Attached Lid Containers	3
Dividable Grid Containers	4
Dividable Grid Containers Accessories	4
Nest and Stack Totes and Lids	5
Shelf Bins	6
Shelf Bin Accessories	6
Semi-Open Front Bins	7
Semi-Open Front Bin Dividers	8
Extra Large Beige Shelf Bins	8
Shelf Bin Divides	8
Stack-N-Store Bins	9
Cross-Stack Tubs	9
Recycled Ultra Hang and Stack	10
Recycled Shelf Bins	10
Mesh Stack and Hang Bins	10
Tip Out Bins	11
Tip Out Bin Accessories	12
Tip Out Bin Frames	12
Dividable Tip Out Bins	13
Dividable Tip Out Bins Dividers	13
Individual Tip Out Bins	14

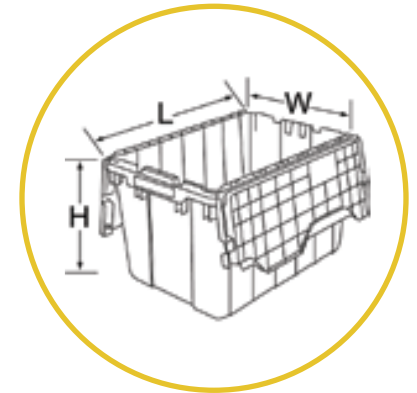


Attached Lid Containers

These well-designed, strong distribution containers are ideal for transporting supplies from off-site or within the facility. Standards dictate that corrugated cardboard cannot be in a sterile storage area making these containers a necessity.

MODEL #	L x W x H (In.) Outer Dimensions	L x W Bottom Interior	CTN. Qty.	COLOURS
9-442	21-1/2 x 15 x 9	18-7/16 x 13-1/4	6	Grey, Red, Blue, Green
9-452	21-1/2 x 15 x 12-1/2	18-7/16 x 13-1/4	6	Grey, Red, Blue, Green
9-520	27 x 17 x 12-1/2	23-1/2 x 14	6	Grey, Red, Green
9-462	21-1/2 x 15 x 17	18-7/16 x 13-1/4	3	Grey only
9-592	24 x 19-1/2 x 12-1/2	20-1/2 x 16-1/2	1	Grey only
9-570	28 x 21 x 15-1/2	25 x 18	1	Grey only
9-700	34 x 24 x 20	30 x 19-1/2	1	Grey only

* Order in carton quantities. One colour per carton. Please specify colour.



FEATURES

- Attached lids snap securely to protect contents from dust or damage
- Containers stack and nest for space optimization
- Padlock tie at both ends to accommodate security ties
- Some models have a variety of colours. Standard colour: grey
- Molded-in handles for easy lifting and carrying



9-462



9-452

Dividable Grid Containers

MODEL #	L x W x H (in.) Outer Dimensions	CAP. (Cu. Ft.)	WT. Cap.	CTN. Qty.
33105	10-7/8 x 8-1/4 x 5	0.16	25	20
33164	16-1/2 x 10-7/8 x 3-1/2	0.29	20	12
33166	16-1/2 x 10-7/8 x 6	0.44	35	8
33168	16-1/2 x 10-7/8 x 8	0.59	40	6
33220	22-3/8 x 17-3/8 x 10	1.66	50	2
33224	22-3/8 x 17-3/8 x 4	0.611	30	6
33226 / TB40	22-1/2 x 17-1/2 x 6	0.964	40	4
33228 / TB48	22-1/2 x 17-1/2 x 8	1.3	50	3
332212-CL	22-1/2 x 17-1/2 x 12			
33223-CL	22-1/2 x 17-1/2 x 3	0.47	30	6

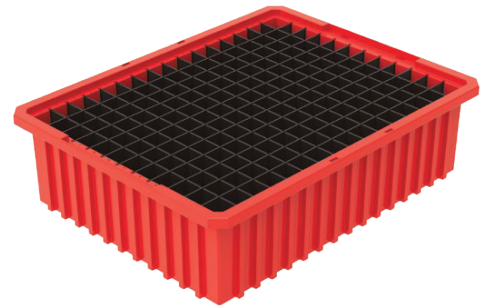
* Order in carton quantities. One colour per carton. Please specify colour.

Dividable Grid Containers Accessories

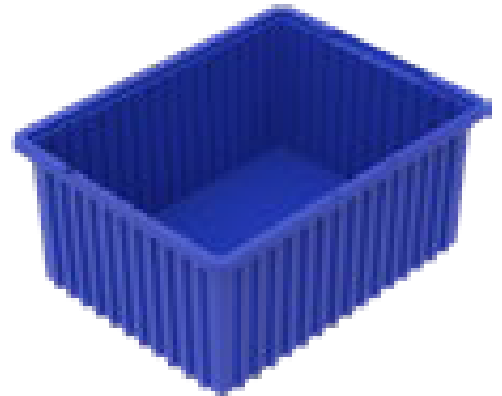
MODEL #	L x H (In.)	DESCRIPTION	CTN. Qty.
33101	N/A	Clear plastic cover for 33105	10
33161	N/A	Clear plastic cover for 33166 and 33168	4
33221	N/A	Clear plastic cover for 22338	3
42105	N/A	Long divider for 33105 (5 max)	6
41105	6-3/8 x 5	Short divider for 33105 (7 max)	6
42166	N/A	Long divider for 33166 (7 max)	6
41166	9-3/4 x 5-1/2	Short divider for 33166 (11 max)	6
42168	N/A	Long divider for 33168 (7 max)	6
41168	9-3/4 x 7-1/2	Short divider for 33168 (11 max)	6
42228	22 x 8	Long divider for 33228 (11 max)	6
41228	17 x 8	Short divider for 33228 (15 max)	6
41164	9-3/4 x 3	Black short divider	6
41223	15-3/4 x 2-1/2	Black short divider	6
41226/DV17	15-3/4 x 5-1/2	Black short divider	6
35010	2 x 8	Label holder	6
35011	3 x 5	Label holder	6

FEATURES

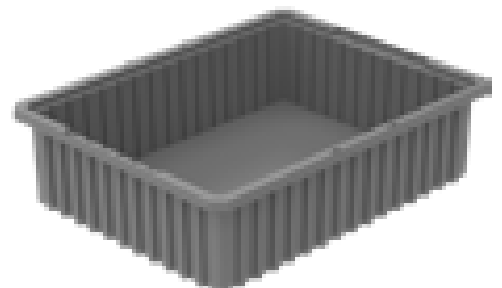
- Injection molded from high-density polyethylene which resists most solvents and chemicals. Ribbed design gives added strength
- Containers come in clear. Blue, red or grey colours also available
- Dividers allow subdivision of the containers down to a 1" square compartment size
- Divider slots allow you to create hundreds of compartment sizes
- Dividers (sold separately) allow subdivision of the containers to a 1 compartment size
- Molded-in letter/number system for easy parts tracking
- Strong stacking rims and external ribbing provide added strength



33226



33220



33226



Nest and Stack Totes and Lids

MODEL # Tote	MODEL # Lid	L x W x D (In.) Outside Dimensions	A - INSIDE (In.)	B - INSIDE (In.)	C - INSIDE (In.)	D - INSIDE (In.)	E - INSIDE (In.)	CAP. (Cu. Ft.)	CTN. Qty.
35-180	35-181	18 x 11 x 6	10	16	15-1/4	9-3/8	5-7/8	0.5	6
35-190	35-191	19-1/2 x 15-1/2 x 10	14-1/2	17	16	13-1/4	9-7/8	1.2	6
35-200	35-201	19-1/2 x 13-1/2 x 8	12-3/8	17-1/8	16-3/8	11-1/2	7-7/8	0.8	6
35-185	35-181	18 x 11 x 9	10	15	14-1/8	9-1/8	8-7/8	0.76	6
35-195	35-191	19-1/2 x 15-1/2 x 13	14-1/2	15-1/2	14-5/8	13-3/8	12-7/8	1.7	6
35-225	35-231	23-1/2 x 19-1/2 x 10	18-1/4	19-3/8	18	16-7/8	9-7/8	2	3
35-300	35-301	29-1/2 x 19-1/2 x 15	18-1/4	26-15/8	25-1/8	16-5/8	14-7/8	3.7	3
35-230	35-231	23-1/2 x 19-1/2 x 13	18-1/8	20-7/8	19-1/2	16-7/8	12-7/8	2.6	3
35-240	35-241	23-1/2 x 15-1/2 x 12	14-1/4	20-7/8	19-5/8	13	11-7/8	1.7	3

Model # 35-010 Label Holder - Fits All Sizes. Order in carton quantities. One colour per carton. Please specify red, blue, or gray colour.

FEATURES

- Optional lids snap securely onto the tote boxes
- The clear plastic label holder accepts a 3" x 5" label
- Smooth surfaces are easy to clean
- Comfortable grip makes handling easy
- Ribs under the lip prevent jamming when nested
- Textured bottoms provide a no-slip grip on conveyor belts
- Wide stacking ledge allows totes to securely stack without lids in place
- Lids have tie holes for extra security

Shelf Bins

Durable polypropylene shelf bins provide a neat appearance on a budget. Works with 12", 18" and 24" deep shelving. One-piece construction. Width-wise dividers available in packages of 12. Bin cups and extended label holders also available. NOTE: Must order in stated carton quantities.

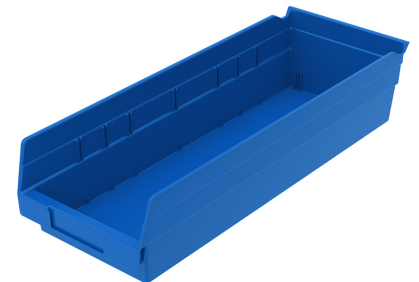
MODEL # Bin	MODEL # Divider	D x W x H (In.) Outside Dimensions	COLOURS	CTN. Qty.
SB110	N/A	11-5/8 x 2-3/4 x 4	Red, Yellow, Blue, Clear	24
SB120	SBD120	11-5/8 x 4-1/8 x 4	Red, Yellow, Blue, Clear	24
SB130	SBD130	11-5/8 x 6-5/8 x 4	Red, Yellow, Blue, Clear	12
SB150	SBD150	11-5/8 x 8-3/8 x 4	Red, Yellow, Blue, Clear	12
SB170	SBD170	11-5/8 x 11-1/8 x 4	Red, Yellow, Blue, Clear	12
SB128	SBD120	17-7/8 x 4-1/8 x 4	Red, Yellow, Blue, Clear	12
SB138	SBD130	17-7/8 x 6-5/8 x 4	Red, Yellow, Blue, Clear	12
SB158	SBD150	17-7/8 x 8-3/8 x 4	Red, Yellow, Blue, Clear	12
SB178	SBD170	17-7/8 x 11-1/8 x 4	Red, Yellow, Blue, Clear	12
SB124	SBD120	23-5/8 x 4-1/8 x 4	Red, Yellow, Blue, Clear	12
SB164	SBD130	23-5/8 x 6-5/8 x 4	Red, Yellow, Blue, Clear	6
SB184	SBD150	23-5/8 x 8-3/8 x 4	Red, Yellow, Blue, Clear	6
SB174	SBD170	23-5/8 x 11-1/8 x 4	Red, Yellow, Blue, Clear	6
SB148		17-7/8 x 4-1/8 x 6	Red, Yellow, Blue, Clear	
SB188		17-7/8 x 8-3/8 x 6	Red, Yellow, Blue, Clear	
SB194		23-5/8 x 6-5/8 x 6	Red, Yellow, Blue, Clear	
SB198		17-7/8 x 6-5/8 x 6	Red, Yellow, Blue, Clear	
SB205-CL		23-5/8 x 4-3/8 x 6	Clear	
SB210-CL		17-7/8 x 11-1/8 x 6	Clear	
SB214-CL		23-5/8 x 8-3/8 x 6	Clear	
SB216-CL		23-5/8 x 11-1/8 x 6	Clear	



SB174



SB110



SB138

* Order in carton quantities. One colour per carton. Please specify colour.



40410

Shelf Bin Accessories

MODEL #	L x H (In.)	DESCRIPTION	COLOUR	CTN. Qty.
SBD120	7 x 4	Divider	Black	24
SBD130	11 x 4	Divider	Black	24
SBD150	8-1/2 x 4	Divider	Black	24
SBD170	4 x 4	Divider	Black	24
40410	4 x 2-3/8	Label holder	Black	24

Semi-Open Front Bins

MODEL # Bin	MODEL # Divider	L x W x H (In.)	COLOURS	CTN. Qty.
B202	N/A	4 x 4 x 2	Red, Yellow, Blue, Green, Clear	Ea.
B203	N/A	6-1/2 x 4 x 2	Red, Yellow, Blue, Green, Clear	Ea.
B210	D210	5-3/4 x 4-1/4 x 3	Red, Yellow, Blue, Clear	24
B211	D211	6-1/2 x 4 x 3	Red, Yellow, Blue, Green, Clear	Ea.
B220	D220	7-1/4 x 4-1/4 x 3	Red, Yellow, Blue, Clear	24
B221	D221	9-1/2 x 6 x 5	Red, Yellow, Blue, Green, Clear	Ea.
B224	N/A	10-3/4 x 4-1/8 x 4	Red, Yellow, Blue, Clear	12
B230	D230	10-3/4 x 5-1/2 x 5	Red, Yellow, Blue, Clear	12
B234	N/A	14-3/4 x 5-1/2 x 5	Red, Yellow, Blue, Clear	12
B235	D230	10-3/4 x 11 x 5	Red, Yellow, Blue, Clear	6
B239	D239	10-3/4 x 8-1/4 x 7	Red, Yellow, Blue, Clear	6
B240	D245	14-3/4 x 8-1/4 x 7	Red, Yellow, Blue, Clear	12
B242	D242	14 x 8 x 6	Red, Yellow, Blue, Green, Clear	Ea.
B244	D244	14 x 8-1/2 x 8	Red, Yellow, Blue, Green, Clear	Ea.
B246	D246	14-1/2 x 19 x 6	Red, Yellow, Blue, Green, Clear	Ea.
B250	D245	14-3/4 x 16-1/2 x 7	Red, Yellow, Blue, Clear	6
B270	D270	20 x 12-1/2 x 6	Red, Yellow, Blue, Clear	3
B275	D275	20 x 12 x 8	Red, Yellow, Blue, Green, Clear	Ea.
B280	D280	20 x 12 x 12	Red, Yellow, Blue, Green, Clear	Ea.
B290	D290	20 x 18 x 12	Red, Yellow, Blue, Green, Clear	Ea.
B295		28 x 18 x 12	Red, Yellow, Blue, Green, Clear	Ea.
B297		24-1/4 x 6 x 5-3/4	Blue	8

* Order in carton quantities. One colour per carton. Please specify colour.



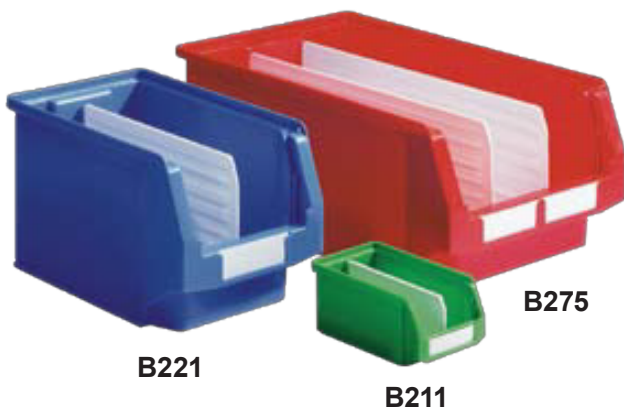
B235



B239



B210



B221

B275

B211



B280

Semi-Open Front Bin Dividers

MODEL #	L x H (In.)	COLOUR	CTN. Qty.
D210		Black	6
D211		Black	Ea.
D220		Black	6
D221		Black	Ea.
D230		Black	6
D239		Black	6
D245		Black	6
D242		Black	Ea.
D244		Black	Ea.
D246		Black	Ea.
D270		Black	6
D275		Black	Ea.
D280		Black	Ea.
D290		Black	Ea.

Extra Large Beige Shelf Bins

For use on 18", 21" or 24" deep wire shelving. Super durable co-polymer polypropylene construction. Stackable with reinforcing ribs to prevent spreading under heavy loads. Front and back finger grips for easy handling. One black cross-wise divider included per bin.

MODEL # Bin	MODEL # Divider	W x L x H (In.) Outside Dimensions	W x L x H (In.) Outside Dimensions	CTN. Qty.
SB348	SBD348	8-1/4 x 20-1/2 x 7	7-3/8 x 20 x 6.5	6
SB358	SBD358	11 x 20-1/2 x 7	10-1/8 x 20 x 6.5	6

Shelf Bin Divides

MODEL #	L x H (In.)	COLOUR	CTN. Qty.
SBD348		Black	6
SBD358		Black	6



SB348 bin with included divider

Stack-N-Store Bins

MODEL #	L x W x H (In.) Outside Dimensions	COLOURS	CTN. Wgt. Lbs.	CTN. Qty.
13014	17-1/2 x 10-7/8 x 12-1/2	Blue, Red, Clear	75	4
13017	15-1/4 x 19-7/8 x 12-7/16	Blue, Red, Clear	75	3
13018	17-1/2 x 16-1/2 x 12-1/2	Blue, Red, Clear	75	2

* Order in carton quantities. One colour per carton. Please specify colour.

FEATURES

- Large radius corners and rolled rim add strength
- Side ribs add stability when stacked
- Wide hopper front allows easy access to bulky items
- Large comfort grip handles



13018



34305

Cross-Stack Tubs

MODEL #	L x W x H (In.) Outside Dimensions	COLOURS	CTN. Qty.
34301	17-1/4 x 11 x 8	Blue, Gray, White	6
34303	23-3/4 x 17-1/4 x 8	Blue, Gray, White	6
34304	23-3/4 x 17-1/4 x 12	Blue, Gray, White	6
34305	25 x 16 x 8-1/2	Blue, Gray, White	6

* Order in carton quantities. One colour per carton. Please specify colour.

FEATURES

- Stacking grooves allow stable 90° stacks.
- Molded-in handles for easy lifting.
- Extra-thick walls and reinforcing ribs provide superior strength.

Recycled Ultra Hang and Stack

Manufactured from recycled, 100% post consumer, high density polypropylene, these bins come in a complete range of sizes and have all the features of Acart's standard bins at a more economical price. Available in Black only.

MODEL #	L x W x H (In.)	CTN. Qty.
B210-REC	5-3/8 x 4-1/8 x 3	24
B220-REC	7-3/8 x 4-1/8 x 3	24
B230-REC	7-3/8 x 4-1/8 x 3	12
B234-REC	14-3/4 x 5-1/2 x 5	12
B239-REC	10-3/4 x 8-1/4 x 7	6
B240-REC	14-3/4 x 8-1/4 x 7	12
B250-REC	14-3/4 x 16-1/2 x 7	6



B250-REC



B230-REC



B240-REC



B239-REC

Recycled Shelf Bins

MODEL #	L x W x H (In.)	CTN. Qty.
SB110-REC	?	?
SB120-REC	?	?
SB124-REC	?	?
SB128REC	?	?
SB130-REC	?	?
SB138-REC	?	?
SB150-REC	?	?
SB164-REC	?	?

Mesh Stack and Hang Bins

MODEL #	L x W x H (In.) Outside Dimensions	L x W x H (In.) Inside Dimensions	CTN. Wgt. Lbs.	CTN. Qty.
B210W	5-1/4 x 4-1/4 x 3	4-3/4 x 3 x 2-3/4	12	20
B220W	7-1/4 x 4-1/4 x 3	6-3/4 x 3 x 2-3/4	15	20
B224W	11 x 4-3/4 x 4	10-3/8 x 3-1/2 x 3-3/4	15	10
B230W	10-3/4 x 5-1/2 x 5	10-1/4 x 4 x 4-3/4	12	10
B234W	15 x 6 x 5	14-1/4 x 4-3/4 x 4-3/4	17	10
B235W	10-3/4 x 11 x 5	10-1/4 x 9-3/4 x 4-3/4	19	10
B239W	10-1/2 x 8 x 7	10 x 6-5/8 x 6-5/8	20	10
B240W	14-1/2 x 8 x 7	14 x 6-5/8 x 6-5/8	30	10
B250W	14-1/2 x 16-1/4 x 7	14 x 14-7/8 x 6-5/8	17	5
B260W	18-1/2 x 11 x 10-1/8	18 x 9-5/8 x 9-7/8	21	5
B270W	18-1/2 x 17-1/8 x 11-1/8	18 x 15-5/8 x 10-7/8	19	5
B270W	18-1/2 x 17-1/8 x 11-1/8	18 x 15-5/8 x 10-7/8	28	5

Our innovative mesh design offers a bright-chrome finish and a 3/8" x 3/8" grid pattern allowing complete visibility of the bin's contents. This unique mesh pattern provides a dust and dirt free storage environment. Ultra strong design allows for superior hang capacity perfect for industrial parts storage or anything where hang capacities are vital. Acart's Mesh Bins feature a rear hanger that allows them to hang from any louvered wall panel or rail system and optional side stacking ledge which allow bins to stack one on top of the other. The open hopper design allows for easy picking while allowing visual access to stored contents. Two styles of optional label holders are available for all Mesh Bins. Finish Chrome.



Tip Out Bins

MODEL #	L x W x H (In.) Outside Dimensions	L x W x H (In.) Bin Dimensions	CTN. Wgt. Lbs.	CTN. Qty.
P301	11-3/4 x 11-13/16 x 13-7/8	8-7/8 x 11-1/16 x 13-5/8	7	1
P302	11-3/4 x 23-5/8 x 13-7/8	8-7/8 x 11-1/16 x 13-5/8	14	1
P303	7-3/4 x 23-5/8 x 9-1/2	5-7/8 x 7-3/8 x 8-5/8	9	1
P304	6-5/8 x 23-5/8 x 8-1/8	5 x 5-5/8 x 7-1/2	7	4
P305	5-1/4 x 23-5/8 x 6-1/2	3-3/4 x 4-1/4 x 5-3/4	5	1
P306	3-5/8 x 23-5/8 x 4-1/2	2-5/8 x 3-1/2 x 3-3/4	2	1
P309	2-1/2 x 23-5/8 x 3-1/8	1-3/4 x 2-3/16 x 2-1/2	2	4

FEATURES

- Clear, break resistant injection molded plastic containers tip open to a 45° angle.
- Removable for easy access and refilling.
- Molded handle with slots for labels provided.
- Polystyrene cabinet can be stacked or wall mounted.
- Exterior available in 3 colours ivory, gray and white. Cups are clear.
- Optional dividers, locking rod and louvered panel bracket also available.



P301



P302



P303



P304



P305



P306



P309

Tip Out Bin Accessories

MODEL #	DESCRIPTION	CTN. Wgt. Lbs.	CTN. Qty.
DIV303	3 dividers for P303	3	2
DIV304	4 dividers for P304	4	1
QLR500	Locking rod for 23-5/8"W tip out bins	1	1
P-LP-BKT	Louvered panel bracket pair for tip out bins (sold as a pair)	2	1

Locking Rod

Keeps bins from tilting open. Can be used with 23-5/8"w bins.



QLR500

Louvered Panel Bracket

Hang 23-5/8"w bin on louvered panel using bracket. Available in beige or gray.



P-LP-BKT

Dividers

P303 and P304 cup can use optional divider as shown above.

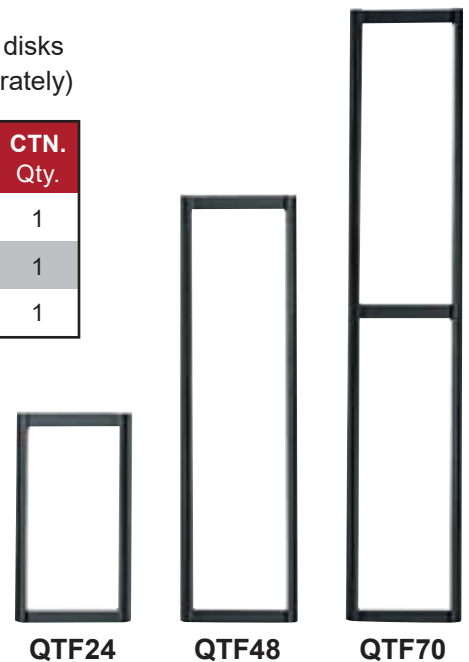


DIV304

Tip Out Bin Frames

Frames are manufactured with preset parallel distance allowing Tip Out Bins to be stacked and removed easily and efficiently. All frames have a ledge at the bottom allowing Tip Out Bins to be secured above ground level. Each Tip Out Bin needs 2 disks and 2 screws (QDS300) in order to affix to all rails and frames. (Bins are sold separately)

MODEL #	DESCRIPTION	# OF BINS TO FIT EACH FRAME						CTN. Wgt. Lbs.	CTN. Qty.
		P302	P303	P304	P305	P306	P309		
QTF24	24"h frame	1	2	3	3	5	8	3	1
QTF48	48"h frame	3	5	6	7	10	16	5	1
QTF70	70"h frame	5	7	8	10	15	23	7	1



QTF24

QTF48

QTF70

Dividable Tip Out Bins

These bins feature removable and adjustable dividers so that the clear bin can be partitioned into smaller compartments. Ideal for larger or longer items, these clear Tip Out Bins are molded from the same strong and flexible material as our standard bins. The flexibility of bins allow the user to determine the size and volume of each storage compartment.

MODEL #	L x W x H (In.) Outside Dimensions	CTN. Wgt. Lbs.	CTN. Qty.
P410	5-1/4 x 11-7/8 x 5-15/16	3	1
P411	5-1/4 x 23-5/8 x 5-15/16	4	1
P412	5-1/4 x 23-5/8 x 5-15/16	4	1

*Order in carton quantities. One colour per carton. Please specify colour.

FEATURES

- Dividable Tip Out Bins are available in 3 sizes (2 with the same width)
- Bins can be stacked as modular units or used individually
- Exterior housing is injection molded from high impact Polystyrene
- Clear bin cups are injection molded from a custom blend of Phillips K Resin and Crystal Styrene for clarity and durability
- Compartment tips open smoothly to a 45° angle and provide comfortable and complete access to stored items
- The flexibility of the system allows you to customize your own system to meet your specific needs
- Exterior available in 3 colours ivory, gray and white. Cups are clear



P410

P410 is one bin design, 12” wide. Each P410 comes with 3 DIV400 clear dividers.



P411

P411 is two bin design, each bin 12” wide. Each P411 comes with 6 DIV400 clear dividers.



P412

P412 is a one bin design, 23-5/8” wide. Each P412 comes with 5 DIV400 clear dividers. *Note: dividers shown in white colour for clarity.

Dividable Tip Out Bins Dividers

MODEL #	DESCRIPTION	COLOURS	CTN. Wgt. Lbs.	CTN. Qty.
DIV400	Divider for dividable tip out bins	Clear	1	4

Individual Tip Out Bins

These unique bins have the ability to interlock horizontally or vertically. Available in three popular sizes, these bins allow you to create your own customized Tip Out Bin storage system perfect for colour coding.

MODEL #	L x W x H (In.) Outside Dimensions	COLOURS	CTN. Wgt. Lbs.	CTN. Qty.
P405	5-1/4 x 4-3/4 x 6-1/4	Ivory, Gray, White	6	5
P406	3-5/8 x 4-1/16 x 4-1/4	Ivory, Gray, White	4	6
P409	2-3/8 x 2-13/16 x 3	Blue, Red, Yellow, White	3	9

** Order in carton quantities. One colour per carton. Please specify colour.*



P409