

| OEM | Skyline DPF # | Engine Model | OEM Part # | Skyline Gasket # | Skyline Clamp # |
|----------------------------------|---------------|--|---|-------------------------|--|
| Caterpillar | A-CPXH-CH1110 | C7 | 305-4565, 305-6294, 10R-6084, 309-0000, 00116233 | SG-RE-11.0-E-A1-K1 (x2) | SC-R11.0-4A4-01-K1 (x2) |
| | A-CPXH-CH1408 | C7 | 291-8513, 294-8690, 10R-6085, 290-7307, 0117438 | SG-RE-11.0-E-A1-K1 (x2) | SC-R11.0-4A4-01-K1 (x2) |
| | A-CPXH-CK1406 | C7/C15 | 304-7578, 304-7579, 10R-6082, 302-5204 | SG-RE-11.0-E-A1-K1 (x2) | SC-R11.0-4A4-01-K1 (x2) |
| | A-CPXH-CN1505 | C7/C9/C13 | 291-8515, 294-8692, 10R-6087 | SG-RE-13.4-E-A1-K1 (x2) | SC-R13.4-4A4-01-K1 (x2) |
| | A-CPXH-CQ1501 | C9/C13 | 304-7502, 304-7519, 10R-7056 | SG-RE-14.4-E-A1-K1 (x2) | SC-R14.4-4A4-01-K1 (x2) |
| | A-CPXH-CQ1702 | C13/C15 | 290-0045, 301-7856, 10R-6088 | SG-RE-13.4-E-A1-K1 (x2) | SC-R13.4-4A4-01-K1 (x2) |
| | A-CPXH-CQ1704 | C13/C15 | 291-8519, 294-8694, 10R-6089 | SG-RE-14.4-E-A1-K1 (x2) | SC-R14.4-4A4-01-K1 (x2) |
| Cummins/Paccar | A-CEXH-BG1101 | ISB/PX6 | 4965287 | SG-FB-10.2-C-A1-K1 (x2) | SC-F10.2-4C1-B1-K1 (x2) |
| | A-CEXH-BG1102 | ISB/PX6 | 4965227 | SG-FB-10.2-C-A1-K1 (x2) | SC-F10.2-4C1-B1-K1 (x2) |
| | A-CEXH-BG1103 | ISB/PX6 | 2871462 | SG-FB-10.2-C-A1-K1 (x2) | SC-F10.2-4C1-B1-K1 (x2) |
| | A-CEXH-BG1104 | ISB/PX6 | 2871461 | SG-FB-10.2-C-A1-K1 (x2) | SC-F10.2-4C1-B1-K1 (x2) |
| | A-CEXH-BGF006 | ISB | 5295603 | SG-FB-10.2-C-A1-K1 (x2) | SC-F10.2-4C1-B1-K1 (x2) |
| | A-CEXH-BGF007 | ISB | 5295607 | SG-FB-10.2-C-A1-K1 (x2) | SC-F10.2-4C1-B1-K1 (x2) |
| | A-CEXH-CJ1201 | ISC/PX8 | 4965286, 4969838 | SG-FB-11.6-C-A1-K1 (x2) | SC-F11.6-4C1-B1-K1 (x2) |
| | A-CEXH-CJ1202 | ISC/PX8 | 3976606, 3978026, 3999661, 3999662, Q619725, Q619495 | SG-FB-11.6-C-A1-K1 (x2) | SC-F11.6-4C1-B1-K1 (x2) |
| | A-CEXH-CJ1203 | ISC/PX8 | 4969839, 4965229 | SG-FB-11.6-C-A1-K1 (x2) | SC-F11.6-4C1-B1-K1 (x2) |
| | A-CEXH-CJ1205 | ISL/ISC, PX8 | 2871459 | SG-FB-11.6-C-A1-K1 (x2) | SC-F11.6-4C1-B1-K1 (x2) |
| | A-CEXH-LJ1204 | ISL/ISC, PX8 | 2871463 | SG-FB-11.6-C-A1-K1 (x2) | SC-F11.6-4C1-B1-K1 (x2) |
| | A-CEXH-LJ1206 | ISL/PX9 | 5295605 | SG-FB-11.6-C-A1-K1 (x2) | SC-F11.6-4C1-B1-K1 (x2) |
| | A-CEXH-LJ1207 | ISL/PX9 | 5295606 | SG-FB-11.6-C-A1-K1 (x2) | SC-F11.6-4C1-B1-K1 (x2) |
| | A-CEXH-MN1001 | ISM/ISL | 4965055, 4352920, 3817962C91, 4352921, 2880281 | SG-FB-13.2-C-A1-K1 (x2) | SC-F13.2-4C1-B1-K1 (x2) |
| | A-CEXH-MN1002 | ISM/ISL | 4352923, 4965244, 2880169, 3623370C93, 4936737 | SG-FB-13.2-C-A1-K1 (x2) | SC-F13.2-4C1-B1-K1 (x2) |
| | A-CEXH-MN1003 | ISM/ISL | 4965224, 4352989 | SG-FB-13.2-C-A1-K1 (x2) | SC-F13.2-4C1-B1-K1 (x2) |
| | A-CEXH-MN1004 | ISM/ISL | 4352922, 4965218 | SG-FB-13.2-C-A1-K1 (x2) | SC-F13.2-4C1-B1-K1 (x2) |
| | A-CEXH-XN1101 | ISX | 4965226, 4969700, 4969702, 5283669, 5297522, 4388409 | SG-FB-13.2-C-A1-K1 (x2) | SC-F13.2-4C1-B1-K1 (x2) |
| | A-CEXH-XN1102 | ISX | 4388411, 5297989, 5283799, 4969703, 4965305 | SG-FB-13.2-C-A1-K1 (x2) | SC-F13.2-4C1-B1-K1 (x2) |
| | A-CEXH-XN1103 | ISX/MX13 | 2871581, 1827310 | SG-FB-13.2-C-A1-K1 (x2) | SC-F13.2-4C1-B1-K1 (x2) |
| A-CEXH-XN1104 | ISX/MX13 | 2871578, 1827739 | SG-FB-13.2-C-A1-K1 (x2) | SC-F13.2-4C1-B1-K1 (x2) | |
| A-CEXH-XN1105 | ISX | 2880168, 4965129, 4969701, 5283778, 5297990, 4388410 | SG-FB-13.2-C-A1-K1 (x2) | SC-F13.2-4C1-B1-K1 (x2) | |
| A-CEXH-XN1106 | ISX | 5295604, 5283283 | SG-FB-13.2-C-A1-K1 (x2) | SC-F13.2-4C1-B1-K1 (x2) | |
| A-CEXH-XN1107 | ISX/N13 | 5295609, 5283286, 5011031R91, 1906311, 2510616C91 | SG-FB-13.2-C-A1-K1 (x2) | SC-F13.2-4C1-B1-K1 (x2) | |
| Detroit Diesel/ Mercedes-Benz | A-DDXH-DG1204 | MBE 900 | A6804910094, A6804908792, RA6804910097, RA6804908792 | SG-MA-11.2-C-A1-K1 (x2) | SC-M11.2-4M2-01-K1 (x2) |
| | A-DDXH-DJ0806 | DD13/DD15/DD16 | A6804910894, A6804903792, A0004903792, A6804913494, A0014903492 | SG-MC-10.2-D-A1-K1 (x1) | SC-B10.4-0B0-B1-K1 (x1) SC-M10.2-4T1-B1-K1 (x1) |
| | A-DDXH-DJ1005 | DD15/DD16 | A6804910494, A6804903692, A0004903692 | SG-MC-10.2-D-A1-K1 (x1) | SC-B10.4-0B0-B1-K1 (x1) SC-M10.2-4T1-B1-K1 (x1) |
| | A-DDXH-DJ1207 | Series 50 | 23535827 | SG-FA-11.6-J-A1-K1 (x2) | SC-F11.6-4J1-A1-K1 (x2) |
| | A-DDXH-DN1501 | Series 60, DD13/ DD15, MBE 4000 | A6804910294, A6804910594, A6804908692 | SG-MC-13.6-D-A1-K1 (x2) | SC-M14.0-4D1-A1-K1 (x2) |
| | A-DDXH-DQ1202 | DD13/DD15 | A6804910794, EA6804910794, A0014907192, RA0014907192 | SG-MC-14.2-G-01-K1 (x2) | SC-M14.4-4D5-A1-K1 (x2) |
| | A-DDXH-DQ1508 | Series 60, DD15 | A6804910394, EA6804910394, A6804908592, RA6804908592 | SG-MC-13.6-D-A1-K1 (x2) | SC-M14.0-4D1-A1-K1 (x2) |

| OEM | Skyline DPF # | Engine Model | OEM Part # | Skyline Gasket # | Skyline Clamp # |
|--------------|---------------|--------------|------------|-------------------------|-----------------|
| Isuzu | A-SZXH-SG0801 | 6HK1/4HK1 | 897608057 | SG-ME-09.4-F-A1-K1 (x2) | No Clamp |

| Navistar/International | Skyline DPF # | Engine Model | OEM Part # | Skyline Gasket # | Skyline Clamp # |
|-------------------------------|---------------|---|--|--|-------------------------|
| | A-NVXH-MJ0804 | 7/DT | 2604873C91, 5010847R1 2605123C1, 2594022C91 | SG-MD-04.0-A-A1-K1 (x1) SG-MD-04.0-A-A2-K1 (x1) | No Clamp |
| | A-NVXH-MJ0824 | 7/DT | 2604873C91, 5010847R1 2605123C1, 2594022C91 | SG-MD-04.0-A-A1-K1 (x1) SG-MD-04.0-A-A2-K1 (x1) | No Clamp |
| | A-NVXH-MJ1206 | 7/DT | 2593981C91, 2593981R91 5010836R91, 2597475C91 | SG-MD-04.0-A-A1-K1 (x1) SG-MD-04.0-A-A2-K1 (x1) | No Clamp |
| | A-NVXH-MJ1222 | DT/9/10 | 2594131C91, 5010832R91 | SG-MD-09.2-A-A1-K1 (x2) | SC-M09.2-4F6-B1-K1 (x2) |
| | A-NVXH-MJ1226 | 7/DT | 2593981C91, 2593981R91 5010836R91, 2597475C91 | SG-MD-04.0-A-A1-K1 (x1) SG-MD-04.0-A-A2-K1 (x1) | No Clamp |
| | A-NVXH-MK1208 | 7/DT | 2594356C91, 5010834R91 | SG-MD-04.0-A-A1-K1 (x1) SG-MD-04.0-A-A2-K1 (x1) | No Clamp |
| | A-NVXH-MK1221 | DT/9/10 | 2594369C91 | SG-MD-04.0-A-A1-K1 (x1) SG-MD-09.2-A-A1-K1 (x1) | SC-M09.2-4F6-B1-K1 (x1) |
| | A-NVXH-MK1223 | 7/DT | 2594165C91, 5010830R91 | SG-MD-09.2-A-A1-K1 (x2) | SC-M09.2-4F6-B1-K1 (x2) |
| | A-NVXH-MK1228 | 7/DT | 2594356C91, 5010834R91 | SG-MD-04.0-A-A1-K1 (x1) SG-MD-04.0-A-A2-K1 (x1) | No Clamp |
| | A-NVXH-MN1009 | DT/9/10 | 2604870C91, 2605796C91, 2611630C91 5010852R1, 5010846R1 | SG-MD-04.0-A-A1-K1 (x1) SG-MD-04.0-A-A2-K1 (x1) | No Clamp |
| | A-NVXH-MN1027 | DT/9/10 | 3712647C91, 2604430C91, 2613113C91 2612521C91, 5010853R1, 5010843R1 2605039C91 | SG-MD-09.2-A-A1-K1 (x2) | SC-M09.2-4F6-B1-K1 (x2) |
| | A-NVXH-MN1029 | DT/9/10 | 2604870C91, 2605796C91, 2611630C91 5010852R1, 5010846R1 | SG-MD-04.0-A-A1-K1 (x1) SG-MD-04.0-A-A2-K1 (x1) | No Clamp |
| | A-NVXH-IN1202 | 11/13 | 2596665C91, 5010851R1, 3817990C91 3817989C91, 3817964C91 | SG-FB-13.2-C-A1-K1 (x2) | SC-F13.2-4C1-B1-K1 (x2) |
| | A-NVXH-IN1204 | 11/13 | 2604046C91, 2604830C91, 5010845R1 3859691C94, CP232717 | SG-RT-00.6-N-D2-K1 (x1) | SC-R13.2-4M2-D1-K1 (x2) |
| A-NVXH-IN1205 | 11/13 | 2603961C91, 2604823C91, 5010844R1 3886127C91, 3859549C93, CP232717 | SG-RT-00.6-N-D2-K1 (x1) | SC-R13.2-4M2-D1-K1 (x2) | |
| A-NVXH-IN1210 | 11/13 | 2601229C91, 5010848R1 | SG-FB-13.2-C-A1-K1 (x2) | SC-F13.2-4C1-B1-K1 (x2) | |

| Volvo/Mack | Skyline DPF # | Engine Model | OEM Part # | Skyline Gasket # | Skyline Clamp # |
|-------------------|-------------------|--------------------|---|-------------------------|-------------------------|
| | A-VPTH-VN1201 | MP7 | 21048577, 21804785, 20992181 21817835, 85000899, 85003793 85125682, 2023111 | SG-MC-13.6-D-A1-K1 (x2) | SC-M14.0-4D1-A1-K1 (x2) |
| | A-VPTH-VN1203 | D11/MP7, D13/MP8 | 20863859, 21850651, 85000761 85001352, 85000751 | SG-FB-13.2-C-A1-K1 (x2) | SC-F13.2-4C1-B1-K1 (x2) |
| | A-VPTH-VN1205 | D11/MP7, D13/MP8 | 20864558, 21905492 | SG-FB-13.2-C-A1-K1 (x2) | SC-F13.2-4C1-B1-K1 (x2) |
| | A-VPTH-VN1206 | D11/MP7, D13/MP8 | 21212426, 21212428, 21212429 21212431, 22810502, 22810503, 22413832, 21415912 | SG-FA-14.1-B-A1-K1 (x2) | SC-R14.0-4V3-A1-K1 (x2) |
| | A-VPTH-VN1207 | MP7 | 21395825, 85124613 | SG-MC-13.6-D-A1-K1 (x2) | SC-M14.0-4D1-A1-K1 (x2) |
| | A-VPTH-VN1209 | MP7 | 21471269, 85124653 22342601, 22761989 | SG-MC-13.6-D-A1-K1 (x2) | SC-M14.0-4D1-A1-K1 (x2) |
| | A-VPTH-VQ1202 | D13/MP8, D16/MP10 | 20864127, 21850658 85000726 | SG-FB-14.2-C-A1-K1 (x2) | SC-F14.2-4C1-B1-K1 (x2) |
| A-VPTH-VQ1204 | D13/MP8, D16/MP10 | 20864316, 21851879 | SG-FB-14.2-C-A1-K1 (x2) | SC-F14.2-4C1-B1-K1 (x2) | |

| OEM | Skyline DOC # | Engine Model | OEM Part # | Skyline Gasket # | Skyline Clamp # |
|----------------|---------------|--------------|---|--|--|
| Cummins/Paccar | D-CEXH-BG0401 | ISB/PX6 | 5287480, 4965285 5287477, 4965222 | SG-FB-10.2-C-A1-K1 (x2) | SC-F10.2-4C1-B1-K1 (x2) |
| | D-CEXH-BG0402 | ISB/PX6 | 5287474, 4965338 | SG-FB-10.2-C-A1-K1 (x1) SG-AB-04.6-A-A1-K1 (x1) | SC-F10.2-4C1-B1-K1 (x1) SC-E04.6-4D1-B1-K1 (x1) |
| | D-CEXH-BG0406 | ISB/PX6 | 2880520 | SG-FB-10.2-C-A1-K1 (x1) SG-RB-05.2-H-A1-K1 (x1) | SC-F10.2-4C1-B1-K1 (x1) SC-E05.2-4R9-01-K1 (x1) |
| | D-CEXH-CJ0401 | ISC/PX8 | 5287496, 4965284 | SG-FB-11.6-C-A1-K1 (x2) | SC-F11.6-4C1-B1-K1 (x2) |
| | D-CEXH-CJ0402 | ISC/PX8 | 5287489, 4965353 | SG-FB-11.6-C-A1-K1 (x1) SG-AB-04.6-A-A1-K1 (x1) | SC-F11.6-4C1-B1-K1 (x1) SC-E04.6-4D1-B1-K1 (x1) |
| | D-CEXH-CJ0403 | ISC/PX8 | 5287491, 4965352 | SG-FB-11.6-C-A1-K1 (x1) SG-AB-04.6-A-A1-K1 (x1) | SC-F11.6-4C1-B1-K1 (x1) SC-E04.6-4D1-B1-K1 (x1) |
| | D-CEXH-CJ0404 | ISC/PX8 | 2880512, 2871468 | SG-FB-11.6-C-A1-K1 (x1) SG-RB-05.2-H-A1-K1 (x1) | SC-F11.6-4C1-B1-K1 (x1) SC-E05.2-4R9-01-K1 (x1) |
| | D-CEXH-CJ0405 | ISC/ISL/PX8 | 2871923, 2871773 | SG-FB-11.6-C-A1-K1 (x1) SG-AB-04.6-A-A1-K1 (x1) | SC-F11.6-4C1-B1-K1 (x1) SC-E04.6-4D1-B1-K1 (x1) |
| | D-CEXH-CJ0406 | ISC/ISL/PX8 | 2880589 | SG-FB-11.6-C-A1-K1 (x1) SG-AB-04.6-A-A1-K1 (x1) | SC-F11.6-4C1-B1-K1 (x1) SC-E04.6-4D1-B1-K1 (x1) |
| | D-CEXH-MN0401 | ISM/ISL | 4969719, 5287519, 4965054 | SG-FB-13.2-C-A1-K1 (x1) SG-AB-05.7-A-A1-K1 (x1) | SC-F13.2-4C1-B1-K1 (x1) SC-E05.7-4D1-B1-K1 (x1) |
| | D-CEXH-MN0402 | ISM/ISL | 5287191, 4965243 | SG-FB-13.2-C-A1-K1 (x2) | SC-F13.2-4C1-B1-K1 (x2) |
| | D-CEXH-MN0403 | ISM/ISL | 5287521, 4965223 5287520, 4965217 | SG-FB-13.2-C-A1-K1 (x2) | SC-F13.2-4C1-B1-K1 (x2) |
| | D-CEXH-MN0406 | ISM/ISL | 5287522, 4969846 | SG-FB-13.2-C-A1-K1 (x2) | SC-F13.2-4C1-B1-K1 (x2) |
| | D-CEXH-XN0501 | ISX | 2888248, 4965225 | SG-FB-13.2-C-A1-K1 (x2) | SC-F13.2-4C1-B1-K1 (x2) |
| | D-CEXH-XN0502 | ISX | 2888247, 4965304 | SG-FB-13.2-C-A1-K1 (x2) | SC-F13.2-4C1-B1-K1 (x2) |
| | D-CEXH-XN0504 | ISX | 2888249, 4969542 4965317, 496503 | SG-FB-13.2-C-A1-K1 (x2) | SC-F13.2-4C1-B1-K1 (x2) |
| | D-CEXH-XN0505 | ISX | 2888261, 4969718 4965053, 2596690C91 | SG-FB-13.2-C-A1-K1 (x1) SG-AB-05.7-A-A1-K1 (x1) | SC-F13.2-4C1-B1-K1 (x1) SC-E05.7-4D1-B1-K1 (x1) |
| | D-CEXH-XN0506 | ISX | 2888262, 4969721 4965079 | SG-FB-13.2-C-A1-K1 (x1) SG-AB-05.7-A-A1-K1 (x1) | SC-F13.2-4C1-B1-K1 (x1) SC-E05.7-4D1-B1-K1 (x1) |
| | D-CEXH-XN0508 | ISX | 2888263, 2885941 | SG-FB-13.2-C-A1-K1 (x1) SG-AB-05.7-A-A1-K1 (x1) | SC-F13.2-4C1-B1-K1 (x1) SC-E05.7-4D1-B1-K1 (x1) |
| | D-CEXH-XN0509 | ISX | 2888250, 2871496 2880317 | SG-FB-13.2-C-A1-K1 (x1) SG-AB-05.7-A-A1-K1 (x1) | SC-F13.2-4C1-B1-K1 (x1) SC-E05.7-4D1-B1-K1 (x1) |
| | D-CEXH-XN0610 | ISX | 2871577 | SG-FB-13.2-C-A1-K1 (x1) SG-AB-05.7-A-A1-K1 (x1) | SC-F13.2-4C1-A1-K1 (x1) SC-E05.7-4D1-B1-K1 (x1) |
| | D-CEXH-XN0612 | ISX | 2880505 | SG-FB-13.2-C-A1-K1 (x1) SG-RB-06.3-H-A1-K1 (x1) | SC-F13.2-4C1-B1-K1 (x1) SC-E06.3-4R9-01-K1 (x1) |
| | D-CEXH-XN0613 | ISX | 2880582 | SG-FB-13.2-C-A1-K1 (x1) SG-AB-05.7-A-A1-K1 (x1) | SC-F13.2-4C1-A1-K1 (x1) SC-E05.7-4D1-B1-K1 (x1) |
| | D-CEXH-XN0614 | ISX | 2880174 | SG-FB-13.2-C-A1-K1 (x1) SG-AB-05.7-A-A1-K1 (x1) | SC-F13.2-4C1-B1-K1 (x1) SC-E05.7-4D1-B1-K1 (x1) |
| | D-CEXH-XN0615 | ISX | 2880506 | SG-FB-13.2-C-A1-K1 (x1) SG-AB-05.7-A-A1-K1 (x1) | SC-F13.2-4C1-A1-K1 (x1) SC-E05.7-4D1-B1-K1 (x1) |
| | D-CEXH-XN0617 | ISX | 2880501 | SG-FB-13.2-C-A1-K1 (x1) SG-AB-05.7-A-A1-K1 (x1) | SC-F13.2-4C1-B1-K1 (x1) SC-E05.7-4D1-B1-K1 (x1) |
| | D-CEXH-XN0618 | ISX | 4353264, 5309560 | SG-FB-13.2-C-A1-K1 (x1) SG-RB-06.3-H-A1-K1 (x1) | SC-F13.2-4C1-B1-K1 (x1) SC-E06.3-4R9-01-K1 (x1) |
| | D-CEXH-XN0621 | ISX | 4328760 | SG-FB-13.2-C-A1-K1 (x1) SG-AB-05.7-A-A1-K1 (x1) | SC-F13.2-4C1-B1-K1 (x1) SC-E05.7-4D1-B1-K1 (x1) |
| | D-CEXH-XN0631 | ISX | 1837300 | SG-FB-13.2-C-A1-K1 (x1) SG-AB-05.7-A-A1-K1 (x1) | SC-F13.2-4C1-B1-K1 (x1) SC-E05.7-4D1-B1-K1 (x1) |

| OEM | Skyline DOC # | Engine Model | OEM Part # | Skyline Gasket # | Skyline Clamp # |
|----------------------------------|---------------|------------------------------------|--------------------------------------|--|--|
| Detroit Diesel/ Mercedes-Benz | D-DDXH-DNT501 | Series 60, DD13/ DD15, MBE 4000 | A6804901214 RA6804901214 | SG-MC-13.6-D-A1-K1 (x1) SG-AA-05.7-A-A4-K1 (x1) | SC-M14.0-4D1-A1-K1 (x1) TBD (x1) |
| | D-DDXH-DNT502 | Series 60, DD13/ DD15, MBE 4000 | A6804901314 RA6804901314 | SG-MC-13.6-D-A1-K1 (x1) SG-AA-05.7-A-A4-K1 (x1) | SC-M14.0-4D1-A1-K1 (x1) TBD (x1) |
| | D-DDXH-DNT503 | Series 60, DD13/ DD15, MBE 4000 | A6804901614 RA6804901614 | SG-MC-13.6-D-A1-K1 (x1) SG-AA-05.7-A-A4-K1 (x1) | SC-M14.0-4D1-A1-K1 (x1) TBD (x1) |
| | D-DDXH-DNT504 | Series 60, DD13/ DD15, MBE 4000 | A6804901814 RA6804901814 | SG-MC-13.6-D-A1-K1 (x1) SG-AA-05.7-A-A4-K1 (x1) | SC-M14.0-4D1-A1-K1 (x1) TBD (x1) |
| | D-DDXH-DNT506 | Series 60, DD13/ DD15, MBE 4000 | A6804901714 RA6804901714 | SG-MC-13.6-D-A1-K1 (x1) SG-AA-05.7-A-A4-K1 (x1) | SC-M14.0-4D1-A1-K1 (x1) TBD (x1) |
| Navistar/ International | D-NVXH-1M0402 | MaxxForce 11/13 | 2603960C91, 5010812R91 3859549C93 | SG-RT-00.6-N-D2-K1 (x1) SG-AB-04.6-A-A3-K1 (x1) | SC-R13.2-4M2-D1-K1 (x1) SC-E04.6-4N8-B1-K1 (x1) |
| | D-NVXH-1M0403 | MaxxForce 11/13 | 2604039C91, 3859691C94 5010811R91 | SG-RT-00.6-N-D2-K1 (x1) SG-AB-04.6-A-A3-K1 (x1) | SC-R13.2-4M2-D1-K1 (x1) SC-E04.6-4N8-B1-K1 (x1) |
| Volvo/ Mack | D-VPTH-VN0401 | D11/MP7 | 20863840, 21850643 | SG-FB-13.2-C-A1-K1 (x2) | SC-F13.2-4C1-A1-K1 (x2) |
| | D-VPTH-VN0603 | D16/MP10 | 20864132, 21850647 | SG-FB-14.2-C-A1-K1 (x2) | SC-F14.2-4C1-A1-K1 (x2) |
| | D-VPTH-VNB402 | D13/MP8 | 20864129, 21850645 | SG-FB-14.2-C-A1-K1 (x2) | SC-F14.2-4C1-B1-K1 (x2) |

About Skyline

Skyline commercializes a broad range of aftermarket diesel particulate filters and oxidation catalysts for 2007 and newer trucks and buses.

Skyline uses a comprehensive development process to ensure the highest quality and performance.

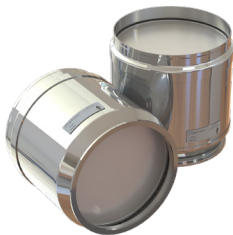
Skyline advantages:

- Superior substrate and catalyst
- OEM equivalent backpressure and regeneration performance for optimum fuel consumption
- State-of-the-art manufacturing for outstanding workmanship and quality
- Demonstrated durability for extended service life



**Designed and Manufactured
in the U.S.A.**

Skyline offers all of these advantages across a wide range of engines. We continue to invest in new product releases to offer a competitive and extensive catalog for our dedicated distributors.



A-DDXH-DJ0806



D-CEXH-XN0505

