



SG-RE-11.0-E-A1



SC-F13.2-4C1-A1



About Skyline

Skyline commercializes a broad range of aftermarket diesel particulate filters and oxidation catalysts for 2007 and newer trucks and buses.

Skyline uses a comprehensive development process to ensure the highest quality and performance.

Skyline advantages:

- Superior substrate and catalyst
- OEM equivalent backpressure and regeneration performance for optimum fuel consumption
- State-of-the-art manufacturing for outstanding workmanship and quality
- Demonstrated durability for extended service life

Skyline offers all of these advantages across a wide range of engines. We continue to invest in new product releases to offer a competitive and extensive catalog for our dedicated distributors.

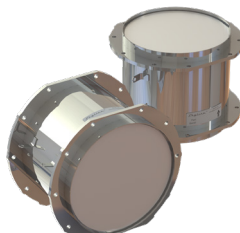
Developed by an engineering team with decades of diesel emissions control experience, Skyline DPFs combine Exact-Fit design with exceptional quality and extensive performance testing. Skyline means greater value because our design, state-of-the-art manufacturing and testing capability have resulted in a durable DPF with extended service life. Our DPFs are built to last and will keep your fleet running with lower operating costs.



A-CPXH-CQ1702



A-DDXH-DJ0806



A-SZXH-SG0801



D-VPTH-VN0401



D-CEXH-XN0505

OEM	Skyline DPF #	Engine Model	OEM Part #	Skyline Gasket #	Skyline Clamp #
Caterpillar	A-CPXH-CH110	C7	305-4565, 305-6294, 10R-6084, 309-0000, 00116233	SG-RE-11.0-E-A1-K1 (x2)	SC-R11.0-4A4-01-K1 (x2)
	A-CPXH-CH1408	C7	291-8513, 294-8690, 10R-6085, 290-7307, 0117438	SG-RE-11.0-E-A1-K1 (x2)	SC-R11.0-4A4-01-K1 (x2)
	A-CPXH-CK1406	C7/C15	304-7578, 304-7579, 10R-6082, 302-5204	SG-RE-11.0-E-A1-K1 (x2)	SC-R11.0-4A4-01-K1 (x2)
	A-CPXH-CN1505	C7/C9/C13	291-8515, 294-8692, 10R-6087	SG-RE-13.4-E-A1-K1 (x2)	SC-R13.4-4A4-01-K1 (x2)
	A-CPXH-CQ1501	C9/C13	304-7502, 304-7519, 10R-7056	SG-RE-14.4-E-A1-K1 (x2)	SC-R14.4-4A4-01-K1 (x2)
	A-CPXH-CQ1702	C13/C15	290-0045, 301-7856, 10R-6088	SG-RE-13.4-E-A1-K1 (x2)	SC-R13.4-4A4-01-K1 (x2)
	A-CPXH-CQ1704	C13/C15	291-8519, 294-8694, 10R-6089	SG-RE-14.4-E-A1-K1 (x2)	SC-R14.4-4A4-01-K1 (x2)
Cummins/Paccar	A-CEXH-BG1101	ISB/PX6	4965287	SG-FB-10.2-C-A1-K1 (x2)	SC-F10.2-4C1-B1-K1 (x2)
	A-CEXH-BG1102	ISB/PX6	4965227	SG-FB-10.2-C-A1-K1 (x2)	SC-F10.2-4C1-B1-K1 (x2)
	A-CEXH-BG1103	ISB/PX6	2871462	SG-FB-10.2-C-A1-K1 (x2)	SC-F10.2-4C1-B1-K1 (x2)
	A-CEXH-BG1104	ISB/PX6	2871461	SG-FB-10.2-C-A1-K1 (x2)	SC-F10.2-4C1-B1-K1 (x2)
	A-CEXH-BGF006	ISB	5295603	SG-FB-10.2-C-A1-K1 (x2)	SC-F10.2-4C1-B1-K1 (x2)
	A-CEXH-BGF007	ISB	5295607	SG-FB-10.2-C-A1-K1 (x2)	SC-F10.2-4C1-B1-K1 (x2)
	A-CEXH-CJ1201	ISC/PX8	4965286, 4969838	SG-FB-11.6-C-A1-K1 (x2)	SC-F11.6-4C1-B1-K1 (x2)
	A-CEXH-CJ1202	ISC/PX8	3976606, 3978026, 3999661, 3999662, Q619725, Q619495	SG-FB-11.6-C-A1-K1 (x2)	SC-F11.6-4C1-B1-K1 (x2)
	A-CEXH-CJ1203	ISC/PX8	4969839, 4965229	SG-FB-11.6-C-A1-K1 (x2)	SC-F11.6-4C1-B1-K1 (x2)
	A-CEXH-CJ1205	ISL/ISC, PX8	2871459	SG-FB-11.6-C-A1-K1 (x2)	SC-F11.6-4C1-B1-K1 (x2)
	A-CEXH-LJ1204	ISL/ISC, PX8	2871463	SG-FB-11.6-C-A1-K1 (x2)	SC-F11.6-4C1-B1-K1 (x2)
	A-CEXH-LJ1206	ISL/PX9	5295605	SG-FB-11.6-C-A1-K1 (x2)	SC-F11.6-4C1-B1-K1 (x2)
	A-CEXH-LJ1207	ISL/PX9	5295606	SG-FB-11.6-C-A1-K1 (x2)	SC-F11.6-4C1-B1-K1 (x2)
	A-CEXH-MN1001	ISM/ISL	4965055, 4352920, 3817962C91, 4352921, 2880281	SG-FB-13.2-C-A1-K1 (x2)	SC-F13.2-4C1-B1-K1 (x2)
	A-CEXH-MN1002	ISM/ISL	4352923, 4965244, 2880169, 3623370C93, 4936737	SG-FB-13.2-C-A1-K1 (x2)	SC-F13.2-4C1-B1-K1 (x2)
	A-CEXH-MN1003	ISM/ISL	4965224, 4352989	SG-FB-13.2-C-A1-K1 (x2)	SC-F13.2-4C1-B1-K1 (x2)
	A-CEXH-MN1004	ISM/ISL	4352922, 4965218	SG-FB-13.2-C-A1-K1 (x2)	SC-F13.2-4C1-B1-K1 (x2)
	A-CEXH-XN1101	ISX	4965226, 4969700, 4969702, 5283669, 5297522, 4388409	SG-FB-13.2-C-A1-K1 (x2)	SC-F13.2-4C1-B1-K1 (x2)
	A-CEXH-XN1102	ISX	4388411, 5297989, 5283799, 4969703, 4965305	SG-FB-13.2-C-A1-K1 (x2)	SC-F13.2-4C1-B1-K1 (x2)
	A-CEXH-XN1103	ISX/MX13	2871581, 1827310	SG-FB-13.2-C-A1-K1 (x2)	SC-F13.2-4C1-B1-K1 (x2)
A-CEXH-XN1104	ISX/MX13	2871578, 1827739	SG-FB-13.2-C-A1-K1 (x2)	SC-F13.2-4C1-B1-K1 (x2)	
A-CEXH-XN1105	ISX	2880168, 4965129, 4969701, 5283778, 5297990, 4388410	SG-FB-13.2-C-A1-K1 (x2)	SC-F13.2-4C1-B1-K1 (x2)	
A-CEXH-XN1106	ISX	5295604, 5283283	SG-FB-13.2-C-A1-K1 (x2)	SC-F13.2-4C1-B1-K1 (x2)	
A-CEXH-XN1107	ISX/N13	5295609, 5283286, 5011031R91, 1906311, 2510616C91	SG-FB-13.2-C-A1-K1 (x2)	SC-F13.2-4C1-B1-K1 (x2)	
Detroit Diesel/ Mercedes-Benz	A-DDXH-DG1204	MBE 900	A6804910094, A6804908792, RA6804910097, RA6804908792	SG-MA-11.2-C-A1-K1 (x2)	SC-M11.2-4M2-01-K1 (x2)
	A-DDXH-DJ0806	DD13/DD15/DD16	A6804910894, A6804903792, A0004903792, A6804913494, A0014903492	SG-MC-10.2-D-A1-K1 (x1)	SC-B10.4-0B0-B1-K1 (x1) SC-M10.2-4T1-B1-K1 (x1)
	A-DDXH-DJ1005	DD15/DD16	A6804910494, A6804903692, A0004903692	SG-MC-10.2-D-A1-K1 (x1)	SC-B10.4-0B0-B1-K1 (x1) SC-M10.2-4T1-B1-K1 (x1)
	A-DDXH-DJ1207	Series 50	23535827	SG-FA-11.6-J-A1-K1 (x2)	SC-F11.6-4J1-A1-K1 (x2)
	A-DDXH-DN1501	Series 60, DD13/ DD15, MBE 4000	A6804910294, A6804910594, A6804908692	SG-MC-13.6-D-A1-K1 (x2)	SC-M14.0-4D1-A1-K1 (x2)
	A-DDXH-DQ1508	Series 60, DD15	A6804910394, EA6804910394, A6804908592, RA6804908592	SG-MC-13.6-D-A1-K1 (x2)	SC-M14.0-4D1-A1-K1 (x2)



Designed and Manufactured
in the U.S.A.

OEM	Skyline DPF #	Engine Model	OEM Part #	Skyline Gasket #	Skyline Clamp #
Isuzu	A-SZXH-SG0801	6HK1/4HK1	897608057	SG-ME-09.4-F-A1-K1 (x2)	No Clamp

Navistar/International	A-NVXH-MJ0804	7/DT	2604873C91, 5010847R1 2605123C1, 2594022C91	SG-MD-04.0-A-A1-K1 (x1) SG-MD-04.0-A-A2-K1 (x1)	No Clamp
	A-NVXH-MJ0824	7/DT	2604873C91, 5010847R1 2605123C1, 2594022C91	SG-MD-04.0-A-A1-K1 (x1) SG-MD-04.0-A-A2-K1 (x1)	No Clamp
	A-NVXH-MJ1206	7/DT	2593981C91, 2593981R91 5010836R91, 2597475C91	SG-MD-04.0-A-A1-K1 (x1) SG-MD-04.0-A-A2-K1 (x1)	No Clamp
	A-NVXH-MJ1222	DT/9/10	2594131C91, 5010832R91	SG-MD-09.2-A-A1-K1 (x2)	SC-M09.2-4F6-B1-K1 (x2)
	A-NVXH-MJ1226	7/DT	2593981C91, 2593981R91 5010836R91, 2597475C91	SG-MD-04.0-A-A1-K1 (x1) SG-MD-04.0-A-A2-K1 (x1)	No Clamp
	A-NVXH-MK1208	7/DT	2594356C91, 5010834R91	SG-MD-04.0-A-A1-K1 (x1) SG-MD-04.0-A-A2-K1 (x1)	No Clamp
	A-NVXH-MK1221	DT/9/10	2594369C91	SG-MD-04.0-A-A1-K1 (x1) SG-MD-09.2-A-A1-K1 (x1)	SC-M09.2-4F6-B1-K1 (x1)
	A-NVXH-MK1223	7/DT	2594165C91, 5010830R91	SG-MD-09.2-A-A1-K1 (x2)	SC-M09.2-4F6-B1-K1 (x2)
	A-NVXH-MK1228	7/DT	2594356C91, 5010834R91	SG-MD-04.0-A-A1-K1 (x1) SG-MD-04.0-A-A2-K1 (x1)	No Clamp
	A-NVXH-MN1009	DT/9/10	2604870C91, 2605796C91, 2611630C91 5010852R1, 5010846R1	SG-MD-04.0-A-A1-K1 (x1) SG-MD-04.0-A-A2-K1 (x1)	No Clamp
	A-NVXH-MN1027	DT/9/10	3712647C91, 2604430C91, 2613113C91 2612521C91, 5010853R1, 5010843R1 2605039C91	SG-MD-09.2-A-A1-K1 (x2)	SC-M09.2-4F6-B1-K1 (x2)
	A-NVXH-MN1029	DT/9/10	2604870C91, 2605796C91, 2611630C91 5010852R1, 5010846R1	SG-MD-04.0-A-A1-K1 (x1) SG-MD-04.0-A-A2-K1 (x1)	No Clamp
	A-NVXH-1N1202	11/13	2596665C91, 5010851R1, 3817990C91 3817989C91, 3817964C91	SG-FB-13.2-C-A1-K1 (x2)	SC-F13.2-4C1-B1-K1 (x2)
	A-NVXH-1N1204	11/13	2604046C91, 2604830C91, 5010845R1 3859691C94, CP232717	SG-RT-00.6-N-D2-K1 (x1)	SC-R13.2-4M2-D1-K1 (x2)
	A-NVXH-1N1205	11/13	2603961C91, 2604823C91, 5010844R1 3886127C91, 3859549C93, CP232717	SG-RT-00.6-N-D2-K1 (x1)	SC-R13.2-4M2-D1-K1 (x2)
	A-NVXH-1N1210	11/13	2601229C91, 5010848R1	SG-FB-13.2-C-A1-K1 (x2)	SC-F13.2-4C1-B1-K1 (x2)

Volvo/Mack	A-VPTH-VN1201	MP7	21048577, 21804785, 20992181 21817835, 85000899, 85003793 85125682, 2023111	SG-MC-13.6-D-A1-K1 (x2)	SC-M14.0-4D1-A1-K1 (x2)
	A-VPTH-VN1203	D11/MP7, D13/MP8	20863859, 21850651, 85000761 85001352, 85000751	SG-FB-13.2-C-A1-K1 (x2)	SC-F13.2-4C1-B1-K1 (x2)
	A-VPTH-VN1205	D11/MP7, D13/MP8	20864558, 21905492	SG-FB-13.2-C-A1-K1 (x2)	SC-F13.2-4C1-B1-K1 (x2)
	A-VPTH-VN1206	D11/MP7, D13/MP8	21212426, 21212428, 21212429 21212431, 22810502, 22810503, 22413832, 21415912	SG-FA-14.1-B-A1-K1 (x2)	SC-R14.0-4V3-A1-K1 (x2)
	A-VPTH-VN1207	MP7	21395825, 85124613	SG-MC-13.6-D-A1-K1 (x2)	SC-M14.0-4D1-A1-K1 (x2)
	A-VPTH-VN1209	MP7	21471269, 85124653, 22342601 22761989	SG-MC-13.6-D-A1-K1 (x2)	SC-M14.0-4D1-A1-K1 (x2)
	A-VPTH-VQ1202	D13/MP8, D16/MP10	20864127, 21850658 85000726	SG-FB-14.2-C-A1-K1 (x2)	SC-F14.2-4C1-B1-K1 (x2)
	A-VPTH-VQ1204	D13/MP8, D16/MP10	20864316, 21851879	SG-FB-14.2-C-A1-K1 (x2)	SC-F14.2-4C1-B1-K1 (x2)

OEM	Skyline DOC #	Engine Model	OEM Part #	Skyline Gasket #	Skyline Clamp #
Cummins/Paccar	D-CEXH-BG0401	ISB/PX6	5287480, 4965285 5287477, 4965222	SG-FB-10.2-C-A1-K1 (x2)	SC-F10.2-4C1-B1-K1 (x2)
	D-CEXH-BG0402	ISB/PX6	5287474, 4965338	SG-FB-10.2-C-A1-K1 (x1) SG-AB-04.6-A-A1-K1 (x1)	SC-F10.2-4C1-B1-K1 (x1) SC-E04.6-4D1-B1-K1 (x1)
	D-CEXH-BG0406	ISB/PX6	2880520	SG-FB-10.2-C-A1-K1 (x1) SG-RB-05.2-H-A1-K1 (x1)	SC-F10.2-4C1-B1-K1 (x1) SC-E05.2-4R9-01-K1 (x1)
	D-CEXH-CJ0401	ISC/PX8	5287496, 4965284	SG-FB-11.6-C-A1-K1 (x2)	SC-F11.6-4C1-B1-K1 (x2)
	D-CEXH-CJ0403	ISC/PX8	5287491, 4965352	SG-FB-11.6-C-A1-K1 (x1) SG-AB-04.6-A-A1-K1 (x1)	SC-F11.6-4C1-B1-K1 (x1) SC-E04.6-4D1-B1-K1 (x1)
	D-CEXH-CJ0405	ISC/ISL/PX8	2871923, 2871773	SG-FB-11.6-C-A1-K1 (x1) SG-AB-04.6-A-A1-K1 (x1)	SC-F11.6-4C1-B1-K1 (x1) SC-E04.6-4D1-B1-K1 (x1)
	D-CEXH-MN0401	ISM/ISL	4969719, 5287519, 4965054	SG-FB-13.2-C-A1-K1 (x1) SG-AB-05.7-A-A1-K1 (x1)	SC-F13.2-4C1-B1-K1 (x1) SC-E05.7-4D1-B1-K1 (x1)
	D-CEXH-MN0402	ISM/ISL	5287191, 4965243	SG-FB-13.2-C-A1-K1 (x2)	SC-F13.2-4C1-B1-K1 (x2)
	D-CEXH-MN0403	ISM/ISL	5287521, 4965223 5287520, 4965217	SG-FB-13.2-C-A1-K1 (x2)	SC-F13.2-4C1-B1-K1 (x2)
	D-CEXH-XN0501	ISX	2888248, 4965225	SG-FB-13.2-C-A1-K1 (x2)	SC-F13.2-4C1-B1-K1 (x2)
	D-CEXH-XN0502	ISX	2888247, 4965304	SG-FB-13.2-C-A1-K1 (x2)	SC-F13.2-4C1-B1-K1 (x2)
	D-CEXH-XN0504	ISX	2888249, 4969542 4965317, 496503	SG-FB-13.2-C-A1-K1 (x2)	SC-F13.2-4C1-B1-K1 (x2)
	D-CEXH-XN0505	ISX	2888261, 4969718 4965053, 2596690C91	SG-FB-13.2-C-A1-K1 (x1) SG-AB-05.7-A-A1-K1 (x1)	SC-F13.2-4C1-B1-K1 (x1) SC-E05.7-4D1-B1-K1 (x1)
	D-CEXH-XN0506	ISX	2888262, 4969721 4965079	SG-FB-13.2-C-A1-K1 (x1) SG-AB-05.7-A-A1-K1 (x1)	SC-F13.2-4C1-B1-K1 (x1) SC-E05.7-4D1-B1-K1 (x1)
	D-CEXH-XN0508	ISX	2888263, 2885941	SG-FB-13.2-C-A1-K1 (x1) SG-AB-05.7-A-A1-K1 (x1)	SC-F13.2-4C1-B1-K1 (x1) SC-E05.7-4D1-B1-K1 (x1)
	D-CEXH-XN0509	ISX	2888250, 2871496 2880317	SG-FB-13.2-C-A1-K1 (x1) SG-AB-05.7-A-A1-K1 (x1)	SC-F13.2-4C1-B1-K1 (x1) SC-E05.7-4D1-B1-K1 (x1)
	D-CEXH-XN0610	ISX	2871577	SG-FB-13.2-C-A1-K1 (x1) SG-AB-05.7-A-A1-K1 (x1)	SC-F13.2-4C1-A1-K1 (x1) SC-E05.7-4D1-B1-K1 (x1)
	D-CEXH-XN0613	ISX	2880582	SG-FB-13.2-C-A1-K1 (x1) SG-AB-05.7-A-A1-K1 (x1)	SC-F13.2-4C1-A1-K1 (x1) SC-E05.7-4D1-B1-K1 (x1)
D-CEXH-XN0615	ISX	2880506	SG-FB-13.2-C-A1-K1 (x1) SG-AB-05.7-A-A1-K1 (x1)	SC-F13.2-4C1-A1-K1 (x1) SC-E05.7-4D1-B1-K1 (x1)	

Detroit Diesel/ Mercedes-Benz	D-DDXH-DNT501	Series 60, DD13/ DD15, MBE 4000	A6804901214 RA6804901214	SG-MC-13.6-D-A1-K1 (x1) SG-AA-05.7-A-A4-K1 (x1)	SC-M14.0-4D1-A1-K1 (x1) TBD (x1)
	D-DDXH-DNT502	Series 60, DD13/ DD15, MBE 4000	A6804901314 RA6804901314	SG-MC-13.6-D-A1-K1 (x1) SG-AA-05.7-A-A4-K1 (x1)	SC-M14.0-4D1-A1-K1 (x1) TBD (x1)
	D-DDXH-DNT503	Series 60, DD13/ DD15, MBE 4000	A6804901614 RA6804901614	SG-MC-13.6-D-A1-K1 (x1) SG-AA-05.7-A-A4-K1 (x1)	SC-M14.0-4D1-A1-K1 (x1) TBD (x1)
	D-DDXH-DNT504	Series 60, DD13/ DD15, MBE 4000	A6804901814 RA6804901814	SG-MC-13.6-D-A1-K (x1) SG-AA-05.7-A-A4-K1 (x1)	SC-M14.0-4D1-A1-K1 (x1) TBD (x1)
	D-DDXH-DNT506	Series 60, DD13/ DD15, MBE 4000	A6804901714 RA6804901714	SG-MC-13.6-D-A1-K1 (x1) SG-AA-05.7-A-A4-K1 (x1)	SC-M14.0-4D1-A1-K1 (x1) TBD (x1)

Navistar/ International	D-NVXH-1M0402	MaxxForce 11/13	2603960C91, 5010812R91 3859549C93	SG-RT-00.6-N-D2-K1 (x1) SG-AB-04.6-A-A3-K1 (x1)	SC-R13.2-4M2-D1-K1 (x1) SC-E04.6-4N8-B1-K1 (x1)
	D-NVXH-1M0403	MaxxForce 11/13	2604039C91, 3859691C94 5010811R91	SG-RT-00.6-N-D2-K1 (x1) SG-AB-04.6-A-A3-K1 (x1)	SC-R13.2-4M2-D1-K1 (x1) SC-E04.6-4N8-B1-K1 (x1)

Volvo/ Mack	D-VPTH-VN0401	D11/MP7	20863840, 21850643	SG-FB-13.2-C-A1-K1 (x2)	SC-F13.2-4C1-A1-K1 (x2)
	D-VPTH-VN0603	D16/MP10	20864132, 21850647	SG-FB-14.2-C-A1-K1 (x2)	SC-F14.2-4C1-A1-K1 (x2)
	D-VPTH-VNB402	D13/MP8	20864129, 21850645	SG-FB-14.2-C-A1-K1 (x2)	SC-F14.2-4C1-B1-K1 (x2)



Designed and Manufactured
in the U.S.A.