

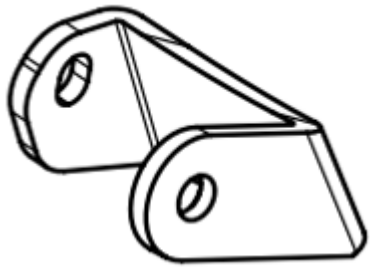
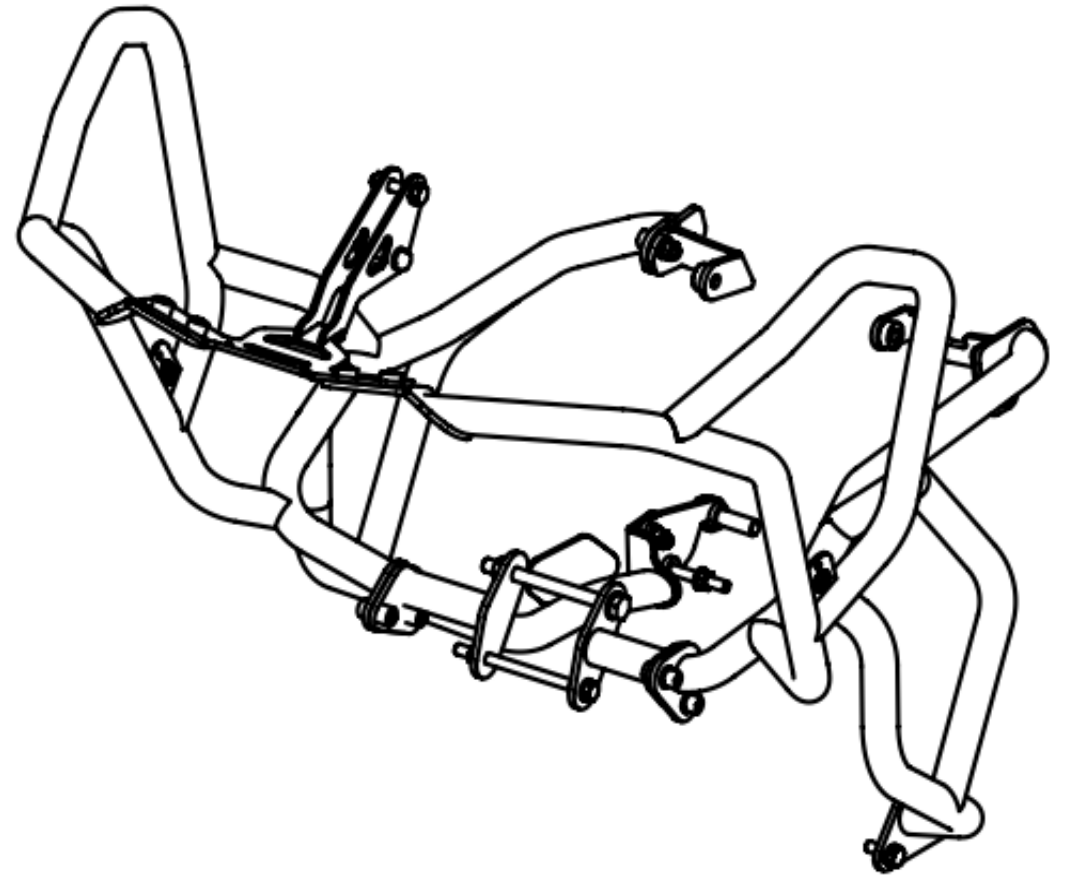
CRASH BARS FOR AFRICA TWIN 1100 ADVENTURE SPORT INSTALLATION MANUAL

We recommend installation of crash bars by a qualified workshop.

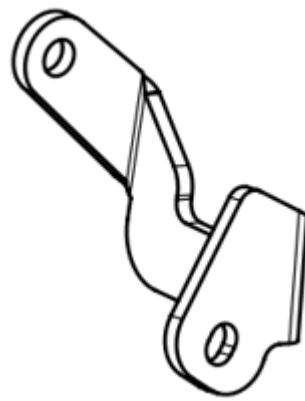
Tips:

- you need a second person for installation
- make sure all motorcycle components are cool before working
- follow the instructions
- use thread glue

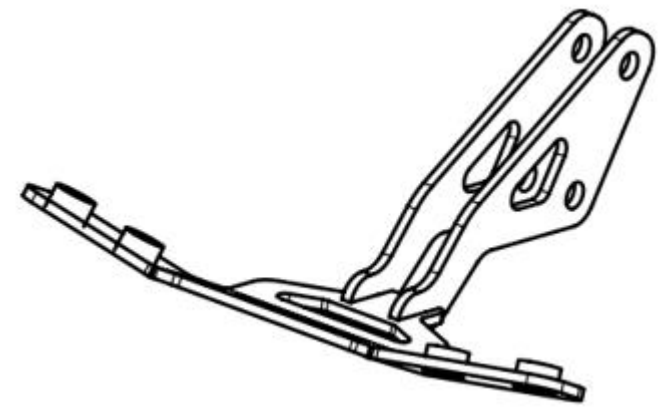
Part no.	Part name	Quantity
1	Right crashbar	1
2	Right post of the crash bar	1
3	Mounting under the lamp	1
4	Left post of the crash bar	1
5	Right mounting under the seat	1
6	Right mounting next to footbrake	1
7	Left crashbar	1
8	Left mounting under the seat	1
9	Conical screw M8x16	4
10	Hexagonal screw M8x40	2
11	Washer M8	19
12	Nut M8	7
13	Allen screw M8x20	4
14	Stainless steel spacer	2
15	Allen screw M8x25	2
16	Allen screw M8x60 (flat head)	1
17	Hexagonal screw M8x110	1
18	Hexagonal screw M10x110	1
19	Washer M10	1
20	Nut M10	1
21	Allen screw M8x25 (flat head)	1
22	Hexagonal screw M8x25	2
23	Hexagonal screw M12x45	1
24	Washer M12	1



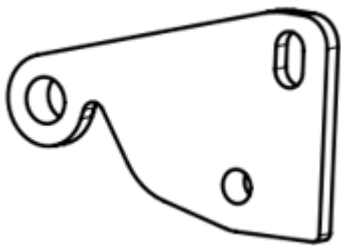
Right mounting under the seat



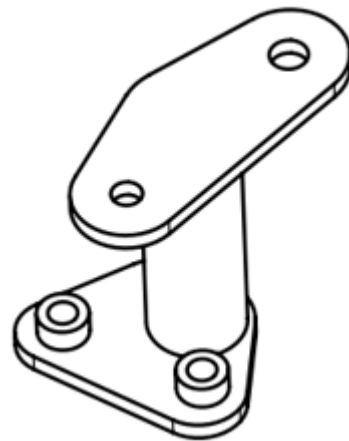
Left mounting under the seat



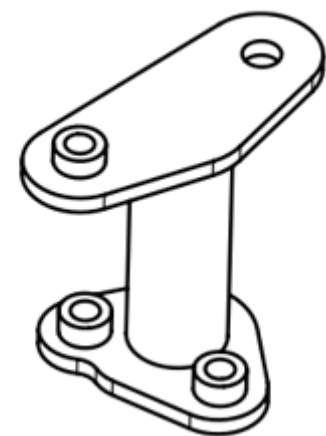
Mounting under the lamp



Right mounting next to footbrake

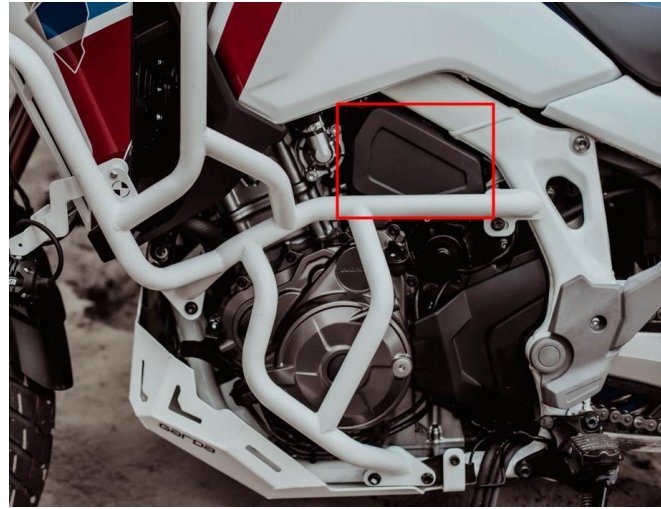


Right post of the crash bar



Left post of the crash bar

1. Remove the engine cover
2. Remove the plastic covers:



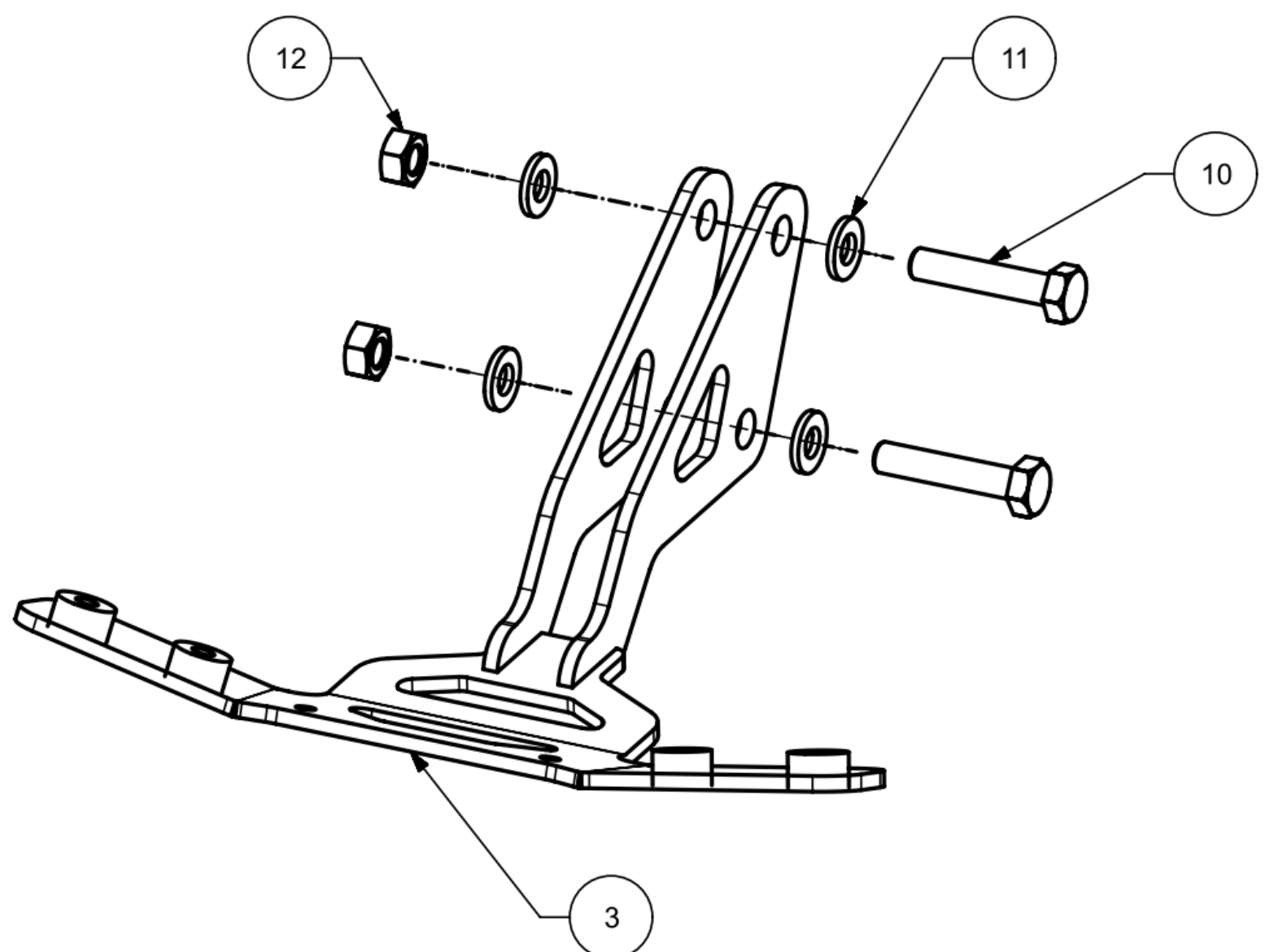
Only DCT



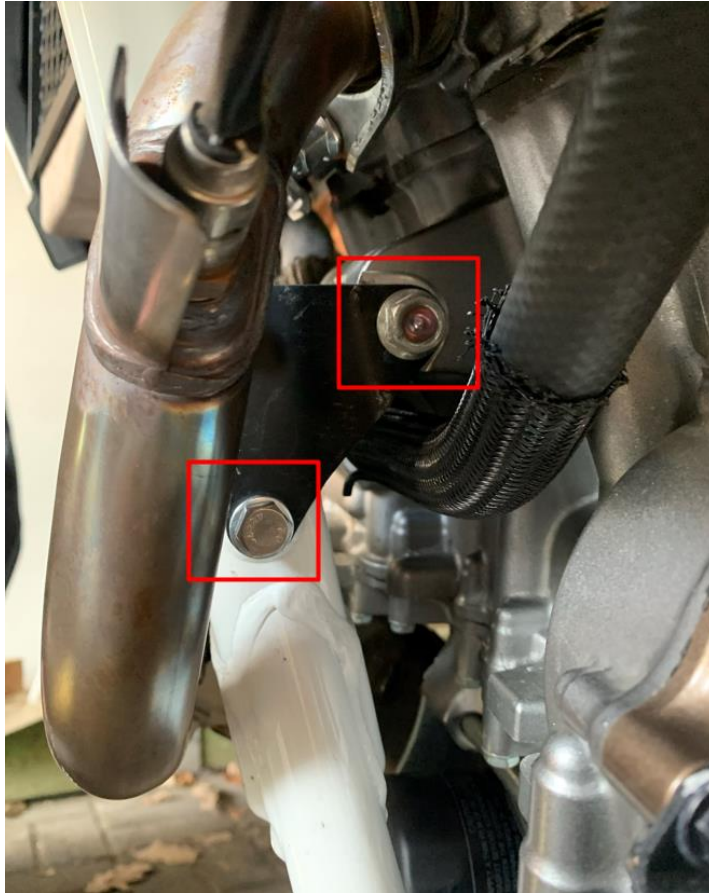
3. Unscrew the screws holding the motorcycle's skull located behind the headlamp at the lag.



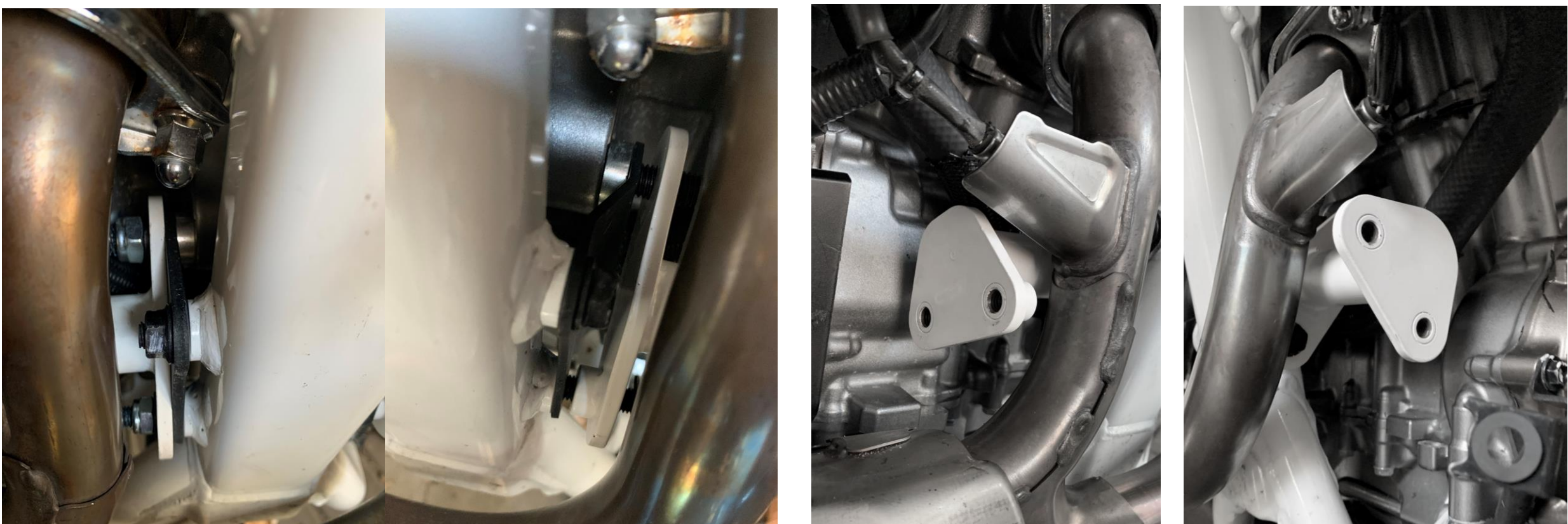
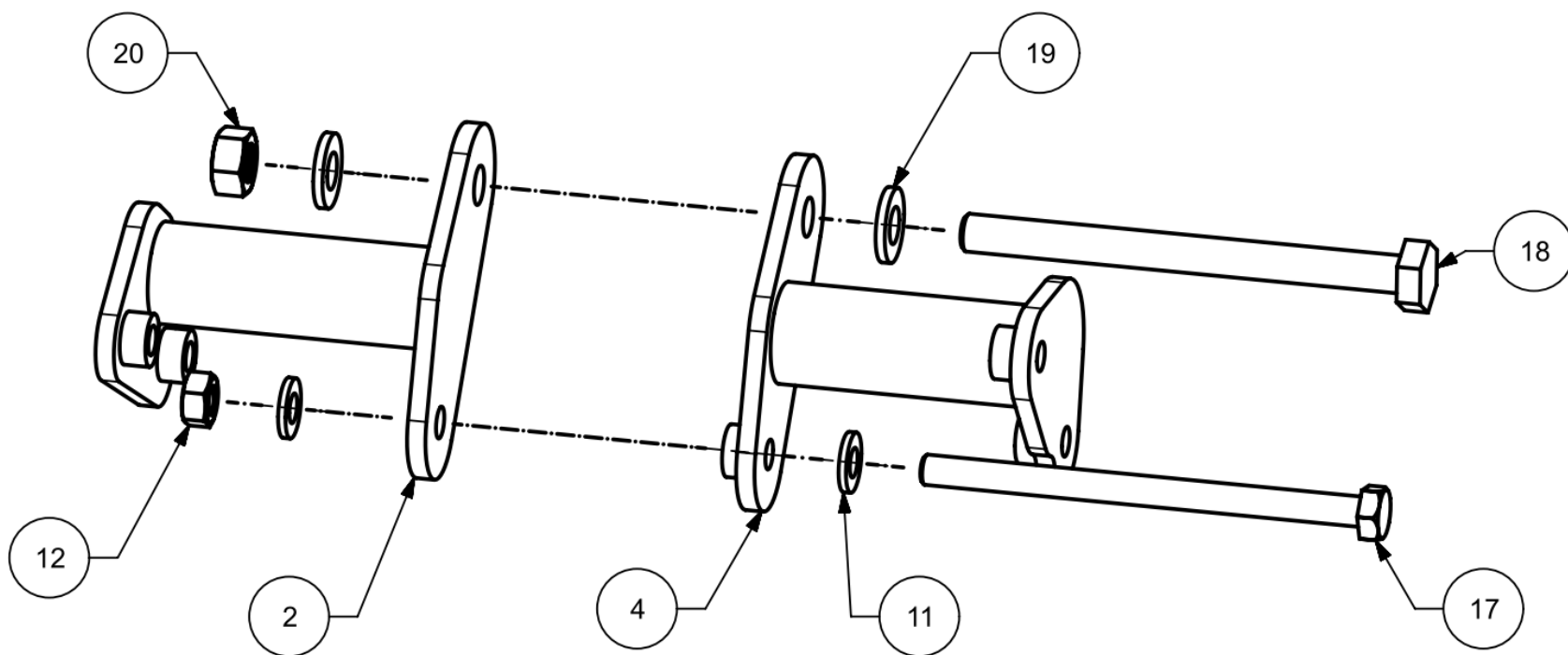
4. Place the motorcycle skull mount between the vertical sheets then screw the whole thing together according to the following diagram (twist the screws without leaving any slack).



5. Unscrew the long bolts passing through the frame (around the exhaust manifold), when removing the M10 (top) bolt, watch out for the bushings that fall out, during re-tightening they must go into their



6. Unscrew the long bolts passing through the frame (around the exhaust manifold), when removing the M10 (top) bolt, watch out for the bushings that fall out, during re-tightening they must go into their



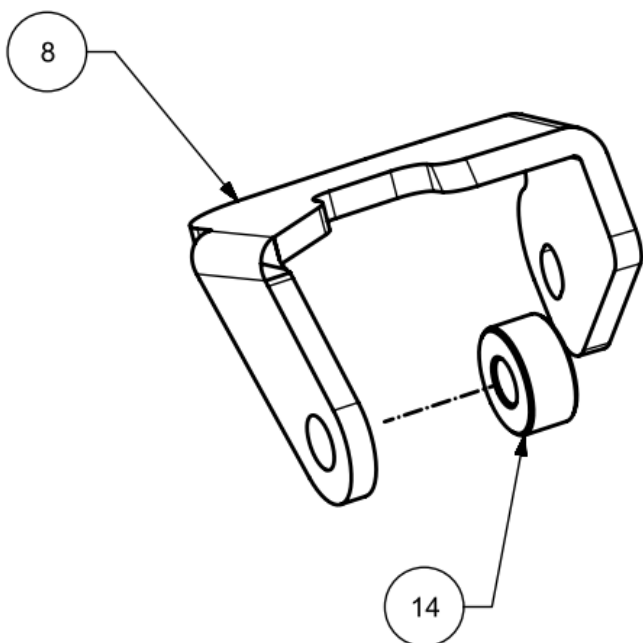
7. Unscrew and pull out the long pin marked below, try to do this without hitting it. Under the top plates on the pin there are spacer sleeves on both the pin head sides as well as the nut, if they have not fallen out themselves pull them out, they will no longer be needed.



8. In place of the spacers, mount the „left and right under seat mounts“ (numbers 5 and 8) along with the with 9.5mm spacers (number 14) one on each side:

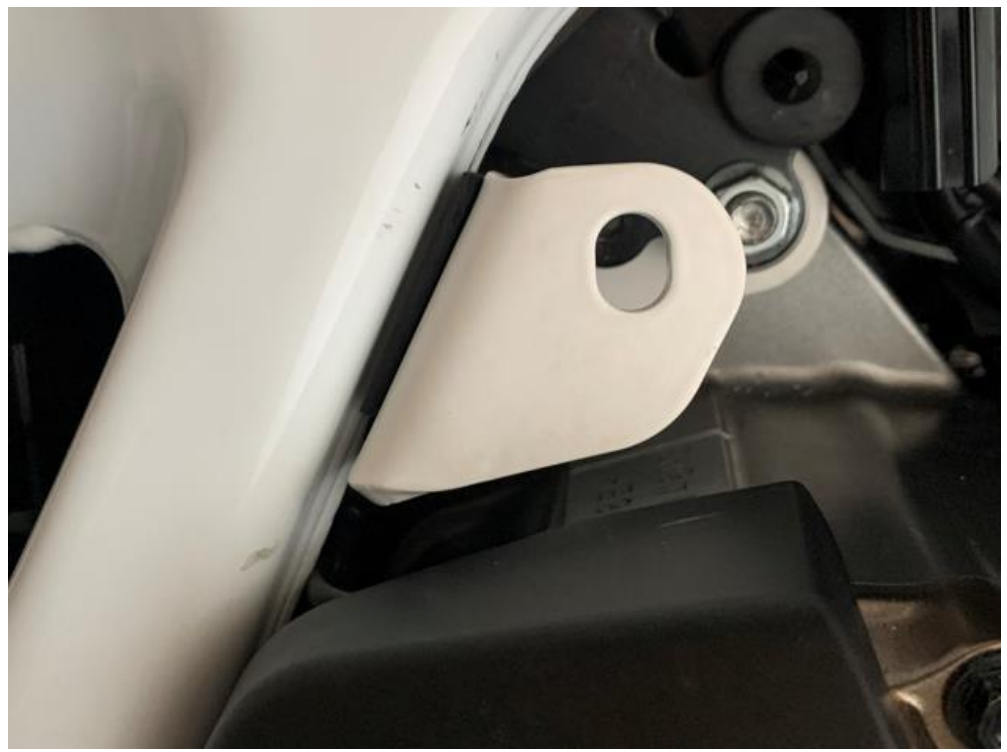
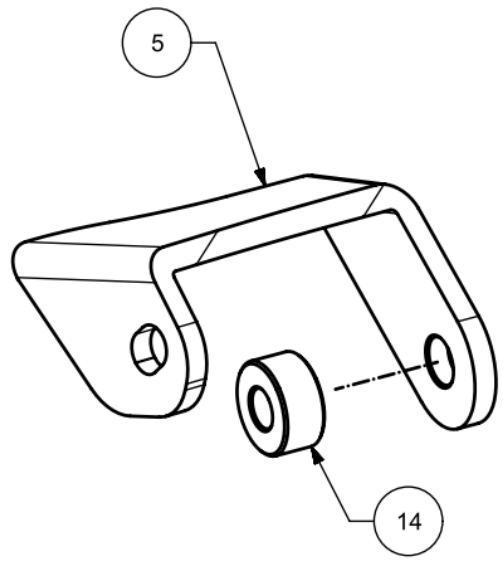
Left mount under the seat:

- fix the component according to the photos below
- take the two looser wires that interfere with the proper installation of the element over the mount so that they are in the cutout
- inside, the sheet metal is to adhere to the engine block, while the free space between it and the white sheet metal
- pay attention to ensure that the rubber on the mount adheres parallel to the frame of the motorcycle



Right mount under the seat:

- fix the component according to the photos below
- inside, the sheet metal is to adhere to the engine block, while the free space between it and the black sheet metal
- outside is to be filled with a 9.5mm spacer
- pay attention to make sure that the rubber on the mount is parallel to the motorcycle frame

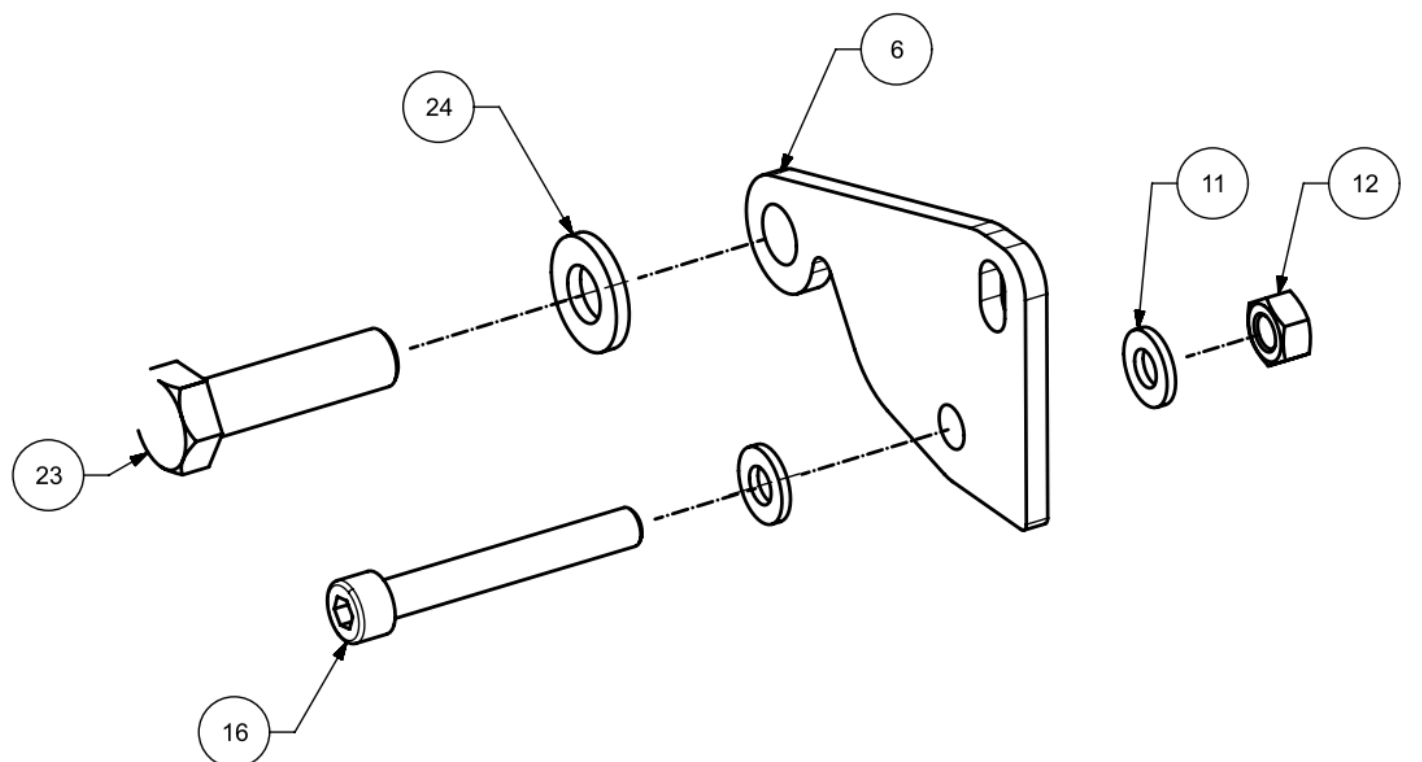


9. Insert the pin threading the mounts and spacers (twist without leaving slack).

10. Screw the plastic toolbox on the right side of the motorcycle using the hole as below.



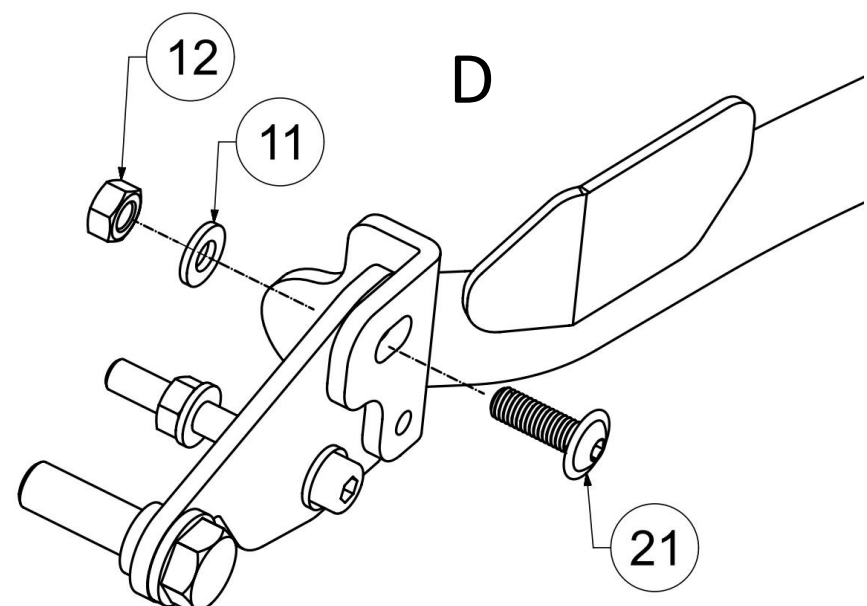
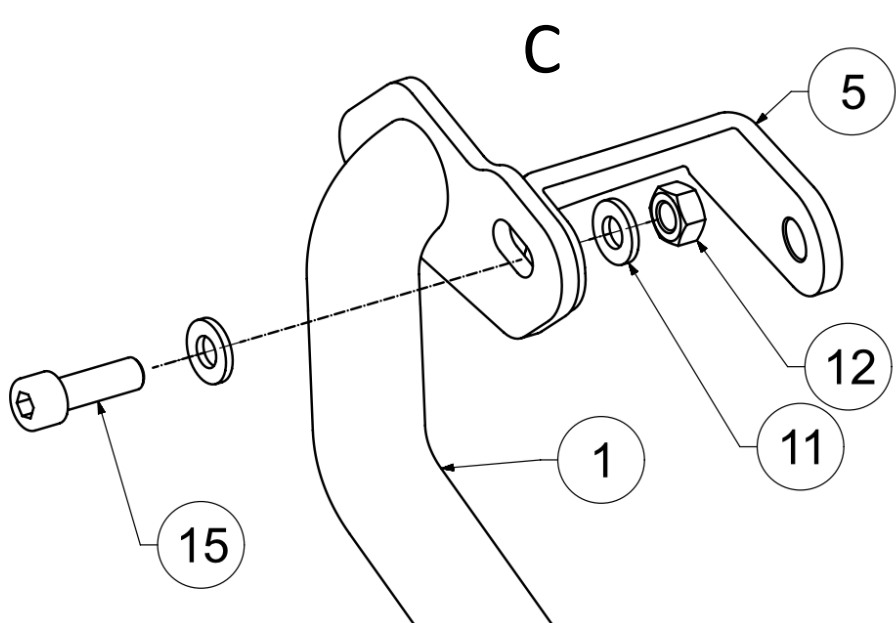
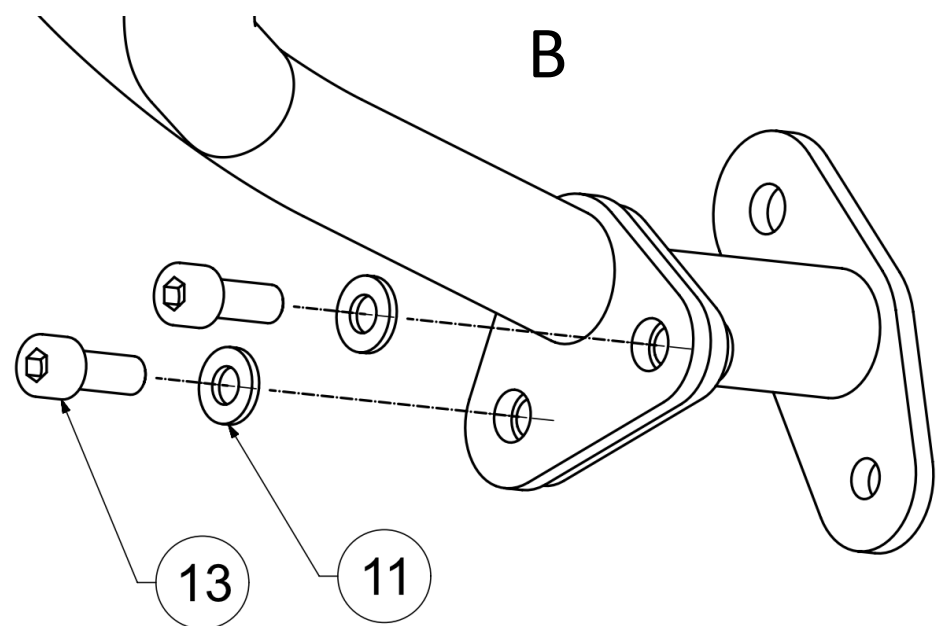
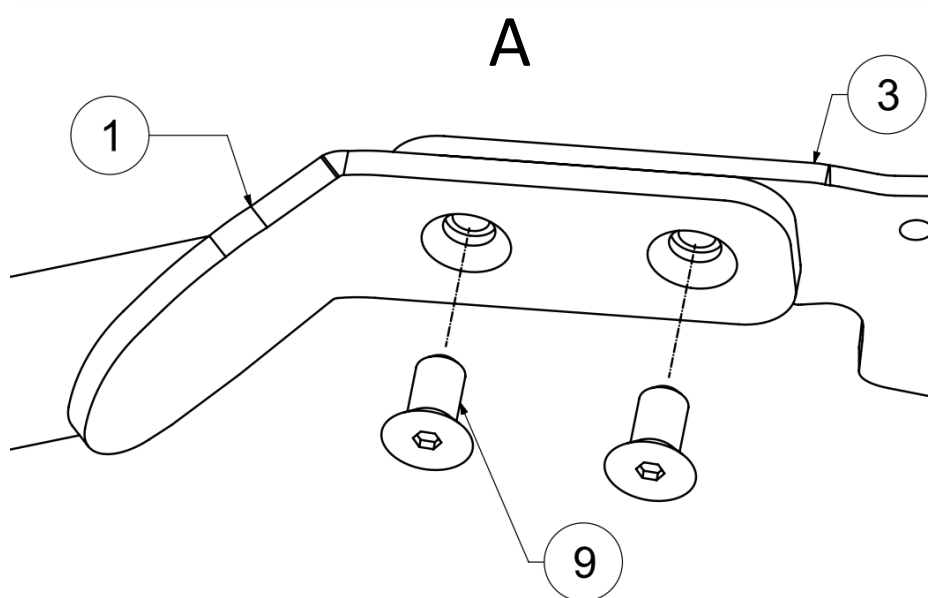
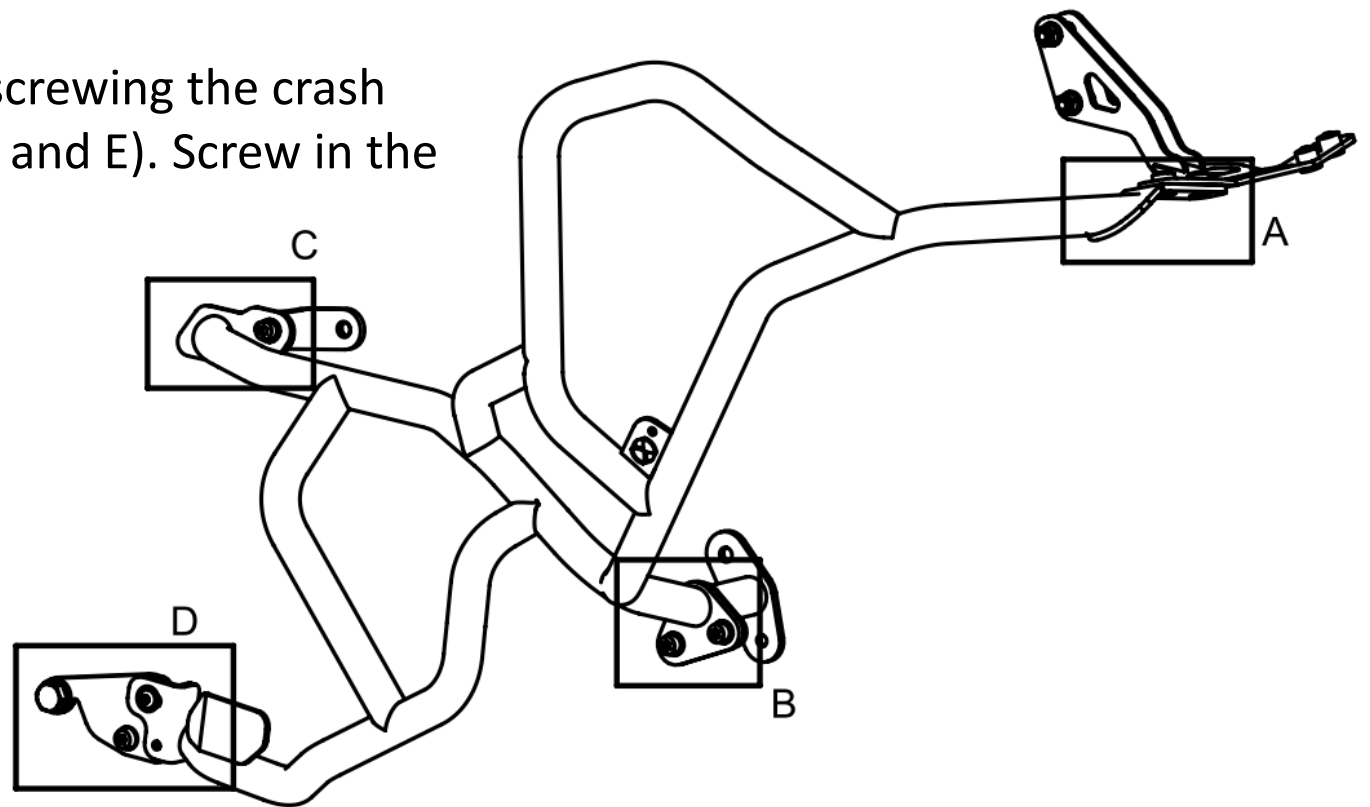
10. Remove the two marked screws (photo to be attached), then screw the mount at the foot brake according to the diagram below (twist the screws without leaving any slack):

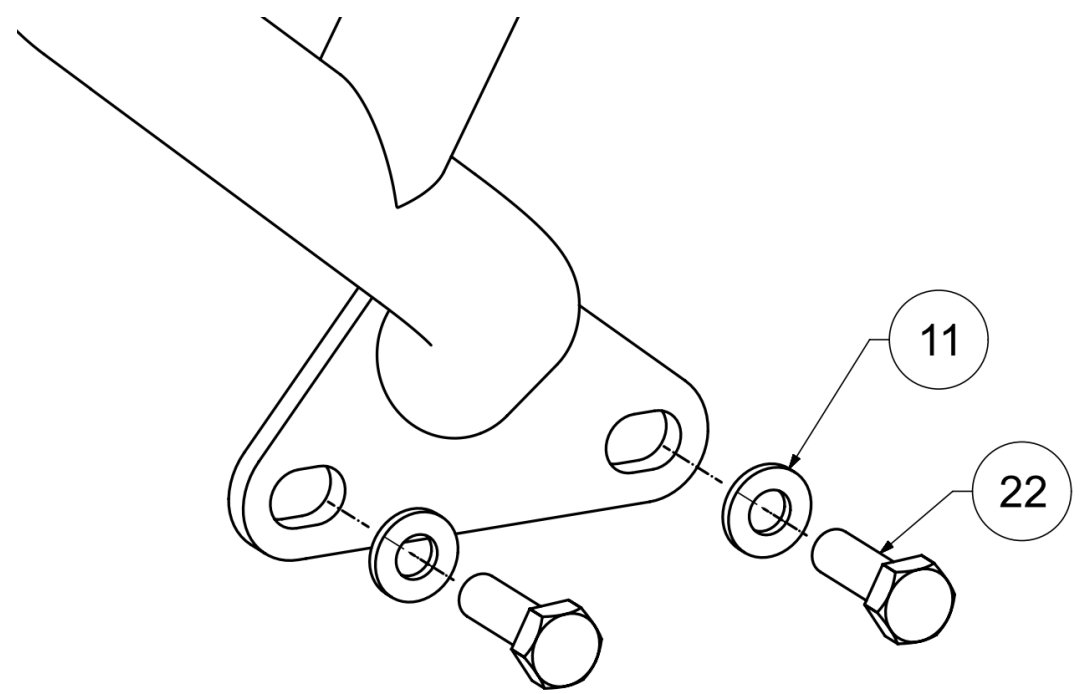
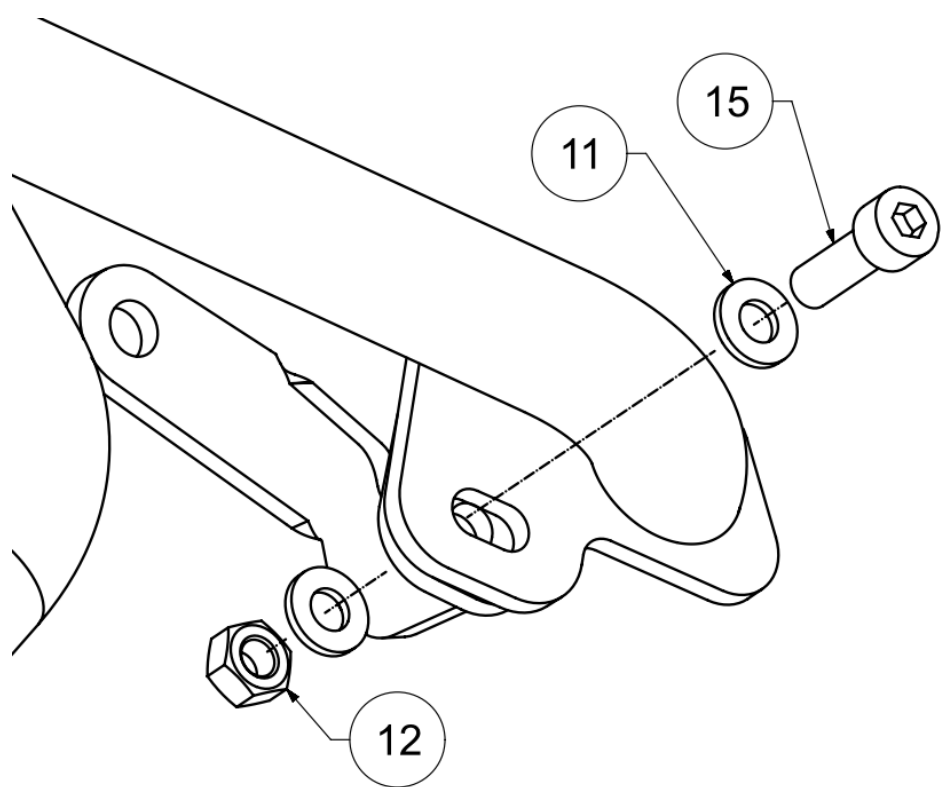
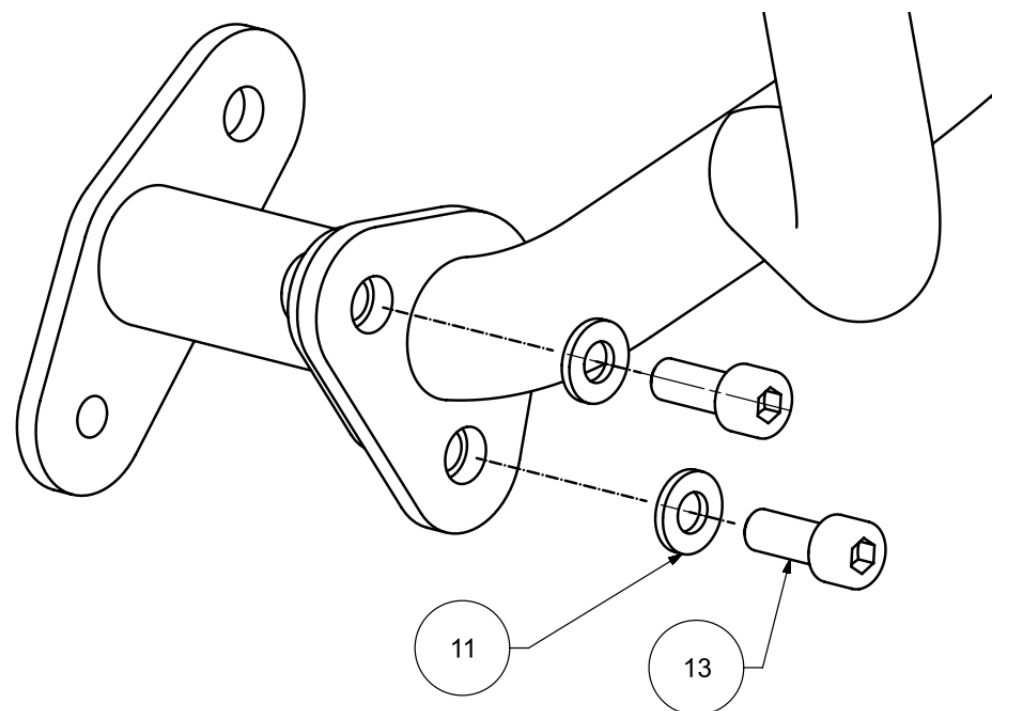
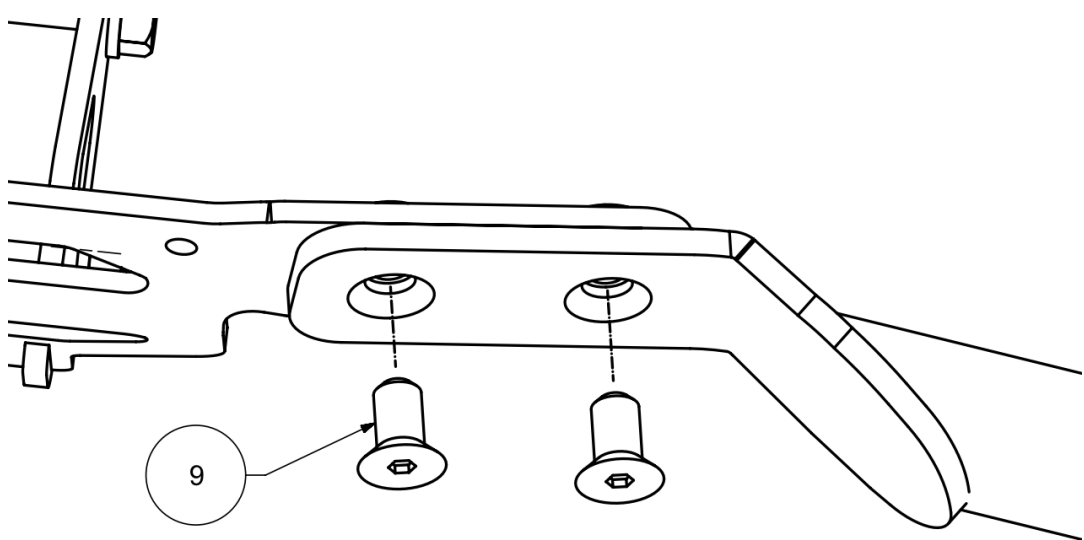
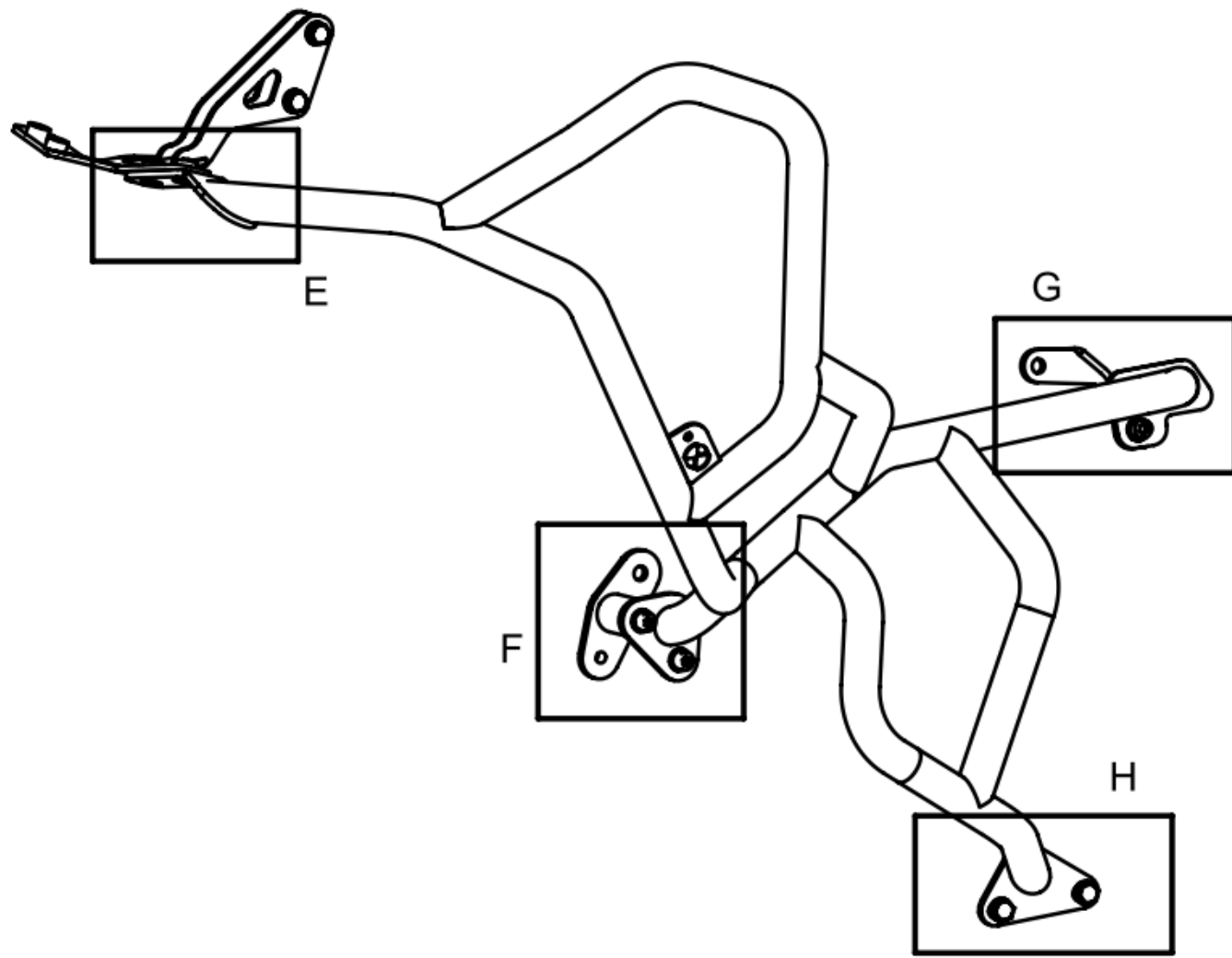


12. Unscrew marked screws.



13. Mount the crash bar according to the instructions below. Perform the assembly according to alphabetical order, leaving no slack when screwing the crash bars with the mount under the lamp (steps A and E). Screw in the remaining bolts (steps B, C, D, F, G, H). Leaving plenty of slack.





14. Tighten all screws, then screw on the previously removed covers.

Bolt tightening torque values: M6 - 10Nm, M8 - 24Nm, M10 - 38 Nm, M12 - 58 Nm.

