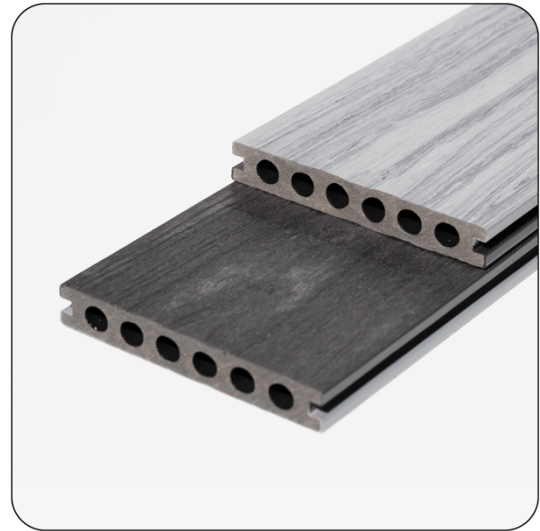


# Signature™ Composite Decking Board

## Overview

Signature™ capped wood-polymer composite (WPC) decking board has a timeless wood-grain appearance.

- Long-lasting: will not rot, warp or twist
- Non-slip and splinter-proof
- Low maintenance: no need to treat or stain
- Manufactured using FSC® certified timber



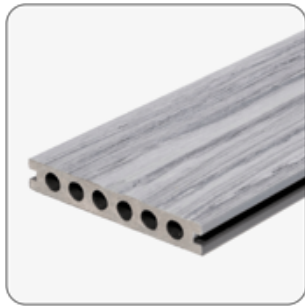
## Performance

Density – ASTM D792-13 Method B	1.19 g/cm <sup>3</sup>
Flexural strength – ASTM D790-10 Procedure A	34.5MPa
Flexural modulus – A	3510MPa
Izod unnotched impact strength - ASTM D4812-11	88 J/m (Complete break)
Shore hardness - With Ref to ASTM D2240-05 (2010)	D/70/1
Tensile strength - ASTM D638-14	24.9MPa
Water absorption – ASTM D570-98 (2010)	0.63%
Coefficient of linear thermal expansion (1/Co) ASTM D696-08	-30°C -30°C: 33.12x10 <sup>-6</sup>
Slip resistance – (Pendulum Test) – Silver Birch & Teak	PTV (Dry) 49, PTV (Wet) 37 - Low risk of slip
Slip resistance – (Pendulum Test) – Mahogany & Ebony	PTV (Dry) 50, PTV (Wet) 37 - Low risk of slip
Reaction to fire – EN ISO 13501-1	C <sub>fl</sub> - s1

## Dimensions

Code	Width	Thickness	Length
Decking Board	142mm	22mm	3000mm

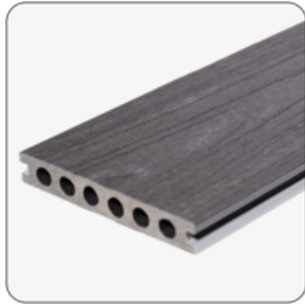
## Finishes



**Silver birch**



**Teak**



**Ebony**



**Mahogany**



**Sycamore**



**Willow**

## Accessories



**Bullnose board**

For neat finishing at edge of deck areas and step treads.



**Edge profile**

An alternative way of capping off-board ends/step treads

**Plastic T-clip**

For a 6mm gap between boards

**Accessories (Cont.)****Metal clasp**

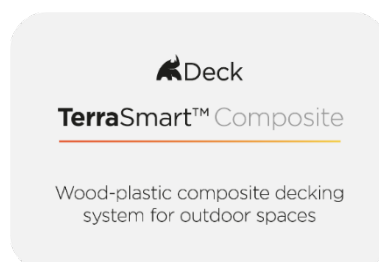
For a 4mm gap between boards

**Starter/End Clip**

For fixing down decking at start and finish of decking areas

**Decking Screw - Black**

3.9 x 30mm CK screw for Plastic T-Clips

**Compatible Systems**

**Got questions?**

**Speak to one of our expert advisors**

Visit [www.rynogroup.co.uk](http://www.rynogroup.co.uk) or call us today on **+44 (0)203 967 3500** or reach out on [sales@rynogroup.co.uk](mailto:sales@rynogroup.co.uk).