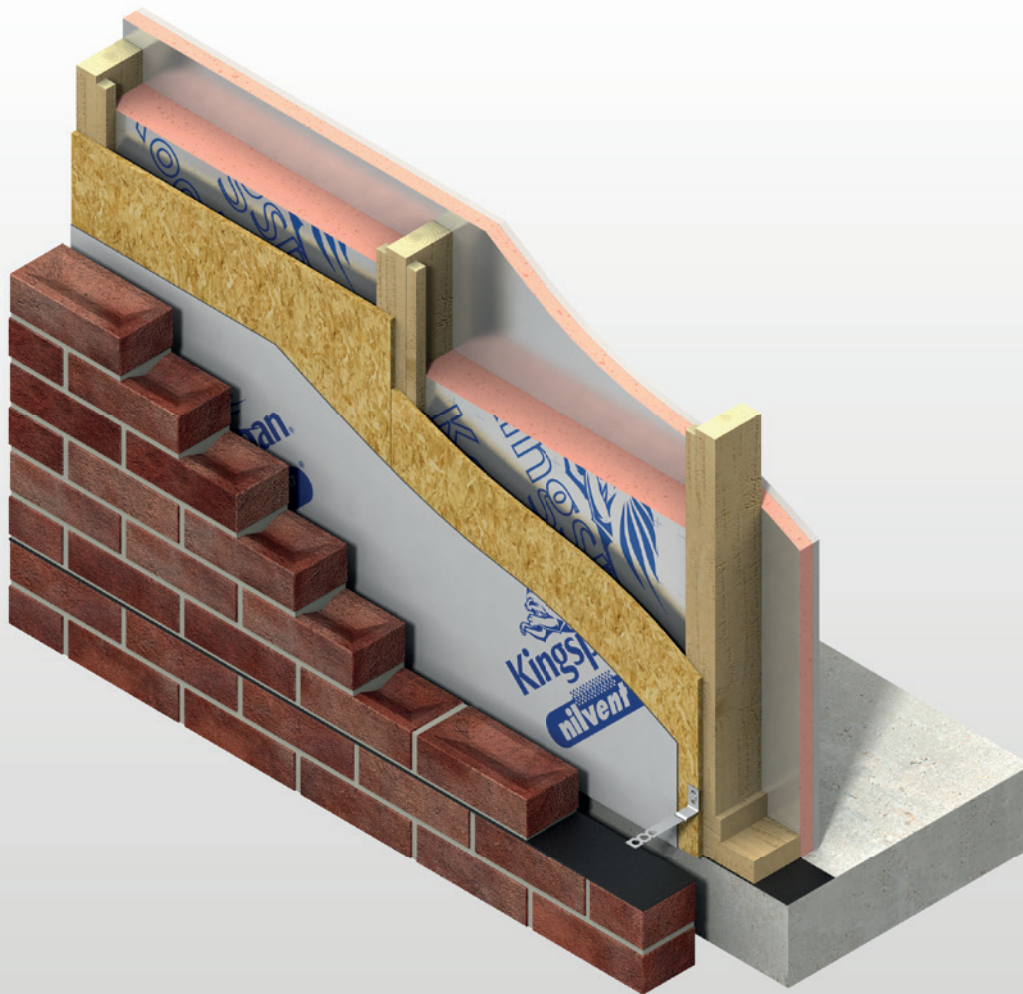




Kooltherm® K12 Framing Board

INSULATION FOR TIMBER AND STEEL FRAMING SYSTEMS



- Premium performance rigid thermoset phenolic insulation – thermal conductivities as low as 0.020 W/m·K
- Can be used between studs or as an insulating sheathing
- Suitable for use with timber frame and steel frame wall constructions
- Unaffected by air infiltration
- Resistant to the passage of water vapour
- Easy to handle and install
- Ideal for new build or refurbishment
- Non-deleterious material
- Manufactured with a blowing agent that has zero ODP and low GWP
- For use below 18 metres

Fibre-free
Core



Kingspan®

*Low Energy –
Low Carbon Buildings*

Kooltherm® K12 Framing Board

Description

Kingspan Kooltherm® K12 Framing Board comprises a premium performance fibre-free rigid thermoset phenolic insulation core, faced on both sides with a low emissivity Fibre-free composite foil, autohesively bonded to the insulation core during manufacture.

General

Resistance to Solvents, Fungi & Rodents

The insulation core is resistant to short-term contact with petrol and with most dilute acids, alkalis and mineral oils. However, it is recommended that any spills be cleaned off fully before the boards are installed. Ensure that safe methods of cleaning are used, as recommended by the suppliers of the spilt liquid. The insulation core is not resistant to some solvent-based adhesive systems, particularly those containing methyl ethyl ketone. Adhesives containing such solvents should not be used in association with this product. Damaged boards or boards that have been in contact with harsh solvents or acids should not be used.

Cutting

- Cutting should be carried out either by using a fine toothed saw, or by scoring with a sharp knife, snapping the board over a straight edge and then cutting the facing on the other side.
- Ensure accurate trimming to achieve close-butting joints and continuity of insulation.

Daily Working Practice

- At the completion of each day's work, or whenever work is interrupted for extended periods of time, board edges and joints should be protected from inclement weather.

Packaging and Storage

- The polyethylene packaging of Kingspan Insulation products, which is recyclable, should not be considered adequate for outdoor protection.
- Ideally, boards should be stored inside a building. If, however, outside storage cannot be avoided, then the boards should be stacked clear of the ground and covered with an opaque polythene sheet or weatherproof tarpaulin. Boards that have been allowed to get wet should not be used.

Health and Safety

- Kingspan Insulation products are chemically inert and safe to use.
- A Safety Information Data Sheet for this product is available from the Kingspan Insulation website <http://www.kingspaninsulation.co.uk/safety>.

-The reflective facings used on this product can be slippery when wet. Therefore, it is recommended that any excess material should be contained to avoid a slip hazard.

Warning – do not stand on or otherwise support your weight on this product unless it is fully supported by a load bearing surface.

Standards & Approvals

Kingspan Kooltherm® K12 Framing Board is manufactured to the highest standards under a management system certified to ISO 9001: 2015, ISO 14001: 2015, BS OHSAS 18001: 2007 and ISO 50001: 2011.

Its use is covered by BBA Certificate 14/5134.



Product Data

Property	Result
General	
Product Thickness	Refer to local distributor for current stock and non-stock sizes
Board Length (m)	2.4
Board Width (m)	1.2
Compressive Strength BS / I.S. EN 826: 2013	Typically exceeds 100 kPa
Thermal	
Thermal Conductivity BS / I.S. EN 13166: 2012 + A2: 2016	0.023 W/m·K (thickness 15–24 mm) 0.021 W/m·K (thickness 25–44 mm) 0.020 W/m·K (thickness ≥ 45 mm)
Fire & Smoke	
Smoke generation BS EN ISO 5659-2: 2012	Achieved a mean maximum specific optical density of smoke < 200 in both the presence and absence of a pilot flame at irradiances of 25 an 50 kW/m ²
Fire Resistance BS 476-21: 1987	12.5 mm plasterboard*: 51 minutes integrity and load bearing capacity; 50 minutes insulation
BS EN 1365-1: 2012	15 mm plasterboard**: 49 minutes integrity, insulation and load bearing capacity

* BS 476-21: 1987 - In conjunction with 75 mm Kingspan Kooltherm® K12 Framing Board, 100 x 50 mm timber studs at 600 mm centres with 9 mm OSB sheathing.

** BS EN 1365-1: 2012 - In conjunction with 38 mm x 38 mm timber battens, 25 mm Kingspan Kooltherm® K12 Framing Board fixed to internal face of studs, 70 mm Kingspan Kooltherm® K12 Framing Board fitted between 89 mm x 38 mm studs, with 9 mm OSB sheathing.

For details on the fire performance of Kingspan Insulation products may be obtained from the Kingspan Insulation Technical Service Department (see below).

Kingspan Insulation Ltd. reserves the right to amend product specifications without prior notice. Product thicknesses shown in this document should not be taken as being available ex-stock and reference should be made to the current Kingspan Insulation price-list or advice sought from Kingspan Insulation's Customer Service Department. The information, technical details and fixing instructions etc. included in this literature are given in good faith and apply to uses described. Recommendations for use should be verified for suitability and compliance with actual requirements, specifications and any applicable laws and regulations. For other applications or conditions of use, Kingspan Insulation offers a Technical Advisory Service (see below), the advice of which should be sought for uses of Kingspan Insulation products that are not specifically described herein. Please check that your copy of this literature is current by contacting the Kingspan Insulation Marketing Department.



Kingspan Insulation Ltd

Pembridge, Leominster, Herefordshire, HR6 9LA, UK
Tel: +44 (0) 1544 388 601
info@kingspaninsulation.co.uk

www.kingspaninsulation.co.uk