

RTV-LPP | Low Profile Plain Roof Tile Vent

Plain roof tile vent to enable ventilation directly into a roof space or connect to a ducted ventilation system

Uses

- On roofs with Plain roof tiles
- Enables ventilation directly into a roof space
- Can also be connected to a ducted ventilation system inside the building

Features and Benefits

- Suitable for roofs with a minimum pitch of 35°
- Free ventilation area of 6,100mm²
- Sized to replace 2 plain tiles to provide a continuous visual appearance along the roof when viewed at all levels
- Shaped to manage rainwater back down onto the roof and away from the vent opening via the three drainage channels
- Internal grille to keep out large insects, vermin and debris
- UV stabilised for continuous exposure to sunlight
- Lightweight and easy to handle

Relevant Standards

- BS EN 490:2011 Concrete roofing tiles and fittings for roof covering and wall cladding - product specifications (+A1:2017)
- BS 5250: 2021 Management of moisture in buildings – Code of practice
- BS 5534:2014 Slating and tiling for pitched roofs and vertical cladding – code of practice (+A2:2018)
- Manufactured to BS EN ISO 9001:2015 and BS EN ISO 14001:2015
- Complies with all relevant sections of the Building Regulations 2010
- Satisfies all relevant NHBC requirements

Compatibility

Plain tiles from all major manufacturers including:

- Redland Rosemary
- Marley Plain
- Russell Traditional Plain
- Sandtoft Humber Plain

Product Codes

| Product Description | Colour | Weight | Box Quantity | Product Code | Pack Quantity | Pack Code |
|----------------------------------|------------|--------|--------------|--------------|---------------|----------------|
| Low Profile Plain Roof Tile Vent | Terracotta | 0.7kg | 1 | RTV-LPTE | 14 | RTVMULTI-LPTE |
| Low Profile Plain Roof Tile Vent | Brown | 0.7kg | 1 | RTV-LPPBR | 14 | RTVMULTI-LPPBR |
| Low Profile Plain Roof Tile Vent | Grey | 0.7kg | 1 | RTV-LPPGR | 14 | RTVMULTI-LPPGR |
| Low Profile Plain Roof Tile Vent | Red | 0.7kg | 1 | RTV-LPPRD | 14 | RTVMULTI-LPPRD |

Accessories

- The 110mm Flexi-Pipe (RTV-KIT1) can be used to aid connection to ventilation duct or soil vent pipe
- The plain adapter (RTV-ADP) can be used to attach the roof tile vent to 110mm ductwork
- Can be connected to 100/110/125/150mm duct sizes when combined with the multi adapter (RTV-ADMULTI)
- RTV-ADP and RTV-KIT1 available as one kit (RTV-KIT3). See 110mm Flexi-Pipe Kits datasheet



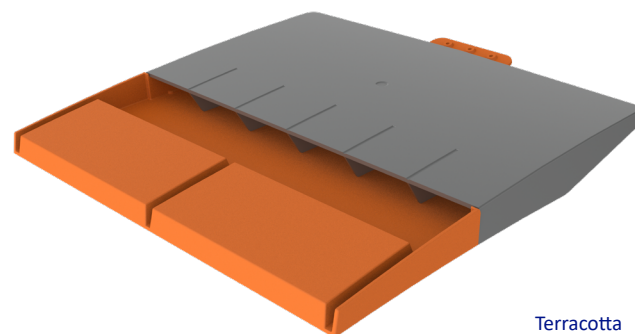
Plain Adapter **RTV-ADP**



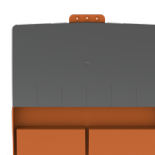
Multi Adapter **RTV-ADMULTI**



110mm Flexi-Pipe **RTV-KIT1**



Terracotta
RTV-LPTE



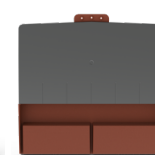
Terracotta
RTV-LPTE



Brown
RTV-LPPBR



Grey
RTV-LPPGR

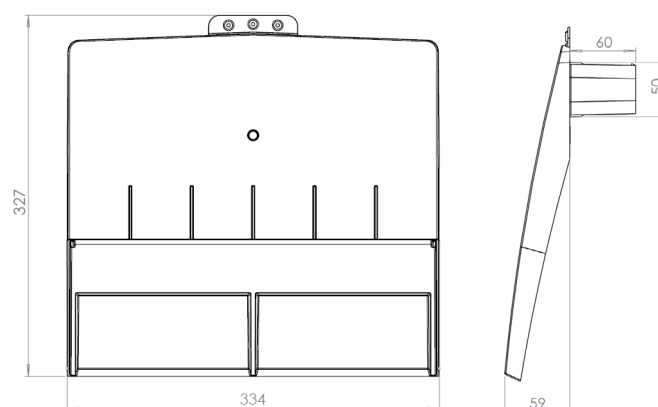


Red
RTV-LPPRD

Material and Colour Choice

- Top - UV stabilised coloured injection moulded Polypropylene with textured finish
- Available in Terracotta, Brown, Grey and Red
- Base – Black injection moulded Polypropylene

Product Dimensions



Top Profile

Side Profile

NB. RTV-LPP available in single, pack or pallet quantities. For pack quantities, 14 tile vent assemblies are packaged in one large box.