

# Desmopol Liquid Polyurethane Membrane

**Desmopol** is a high elastomeric waterproofing liquid membrane for flat roofs, walkways, balconies and a perfect solution for waterproofing complicated roofs with many detail work.

**Desmopol** can be applied to most of substrates without the need of a primer such as Bitumen, Torch-on felts, OSB, single ply, asphalt or on warm roofs, over PIR boards...

**Desmopol** holds BBA / ETA Certification for life expectancy in excess of 25 years.



Only 1 layer with Desmoplus Accelerator.



Rapid curing. Resistant to rain 30 minutes after application.



Protects against corrosion, rust and wear.



Easy and quick application. No reinforcement required.



High resistance to extreme temperatures. From -40C to 80C. Can be applied from -5C to 30C.



Fire safe. No naked flames required.



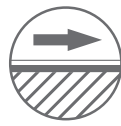
Excellent adhesion to all types of substrates; plywood, bitumen membrane, concrete, asphalt.



Can be applied even with zero pitch.



CE marked & BBA certified for 25 years.



No seams or overlaps.



High resistance to abrasion and high elasticity.



Completely waterproof.

CE

Applus®

tecnalia

ETA

Certified company:



High Performance Waterproofing

Tel: 03304 004170  
[info@eagle-insulations.com](mailto:info@eagle-insulations.com)  
[www.eagle-insulations.com](http://www.eagle-insulations.com)





## Wet-on-Wet (Fully reinforced system)

Desmopol is applied to the prepared substrate first. Whilst wet, reinforce by “dry rolling” the matting into the product until its fully embedded. Apply more Desmopol (to a minimum of 1.8kg/m<sup>2</sup>) ensuring the matting is fully encapsulated, with no dry areas or pinholes. Joints on matting must be overlapped by at least 50cm. The matting must be fully saturated with no dry areas or pinholes.

**1** Check you have all necessary materials and always use Solvent resistant rollers.

**2** Inspect the roof and carry the necessary repairs, before coating with Desmopol. Blisters, joints, splits must be treated with PU mastic. Substrate must be clean and free from dust, lichen or rust.

**3** Open the Desmopol drum and stir the contents at slow speed until all components are fully mixed. If you don't apply the drum completely in a short period of time, you need to stir it regularly to avoid separation of components.

\*\*Desmothix to be added to achieve the desired consistency up to 1Lt per 25kg drum. Usually 300ml per drum is enough to get the right consistency.

**4** Apply Desmopol fully reinforced to the upstands, outlets, penetrations and any other detail work.

**5** Apply Desmopol fully reinforced on a wet-on wet system to the main area.

**6** Inspect the roof for any dry areas or pinholes and apply an additional coat if necessary.

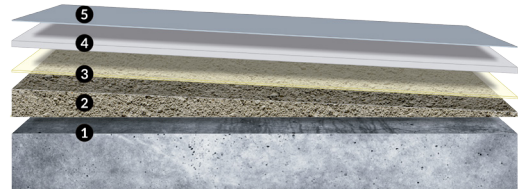
**7** Once main waterproofing layer is dry, tecnotop topcoat, or antiskid coatings can be applied

*AVOID the use of silicone based mastics as they are not compatible. In the presence of roof repair coatings on the roof, check compatibility with Desmopol before applying the product.*

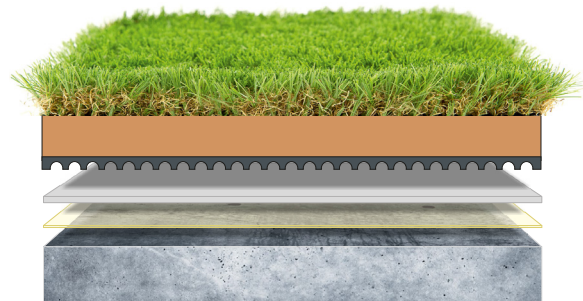
### \*\*PRIMERS

*For concrete, EPDM and TPO single ply the use of PU1000 primer is recommended.*

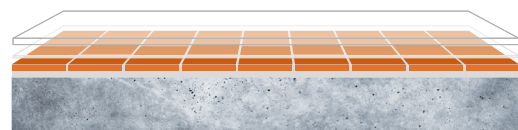
*However we advise to carry a patch test if you are not sure about the substrate.*



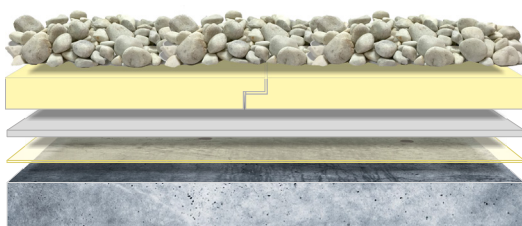
NEW BUILD WATERPROOFING



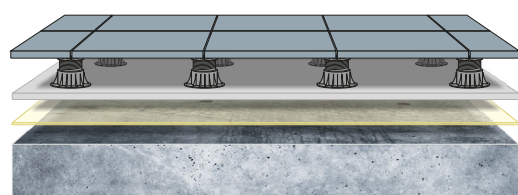
GREEN ROOF



TRANSPARENT FINISH-DESMOPOL T



INVERTED ROOF



PAVING SLABS

## Accelerated system



BALCONIES & WALKWAYS



HEAVY TRAFFIC- TECNOTOP 3000

**1** Check you have all necessary materials and always use Solvent resistant rollers.

**2** Inspect the roof and carry the necessary repairs, before coating with Desmopol. Blisters, joints, splits must be treated with PU mastic. Substrate must be clean and free from dust, lichen or rust.

**3** Open the Desmopol drum and mix the accelerator. stir the contents at slow speed for 2 minutes until all components are fully mixed. Once the accelerator is mixed you have 20-30 minutes pot life. Important **Note:** *Desmoplus Accelerator must be mixed at the exact ratio of 2Lt tin for 25kg or 500ml per 6kg tin. Do not modify this ratio as this may result in an incorrect chemical reaction. Exact ratio of 110ml per each Litre of Desmopol.*

**4** Apply accelerated Desmopol fully reinforced to the upstands, outlets, penetrations and any other detail work.

**5** Once detail work is dry, apply Accelerated Desmopol to the main area.

**6** Inspect the roof for any pinholes.

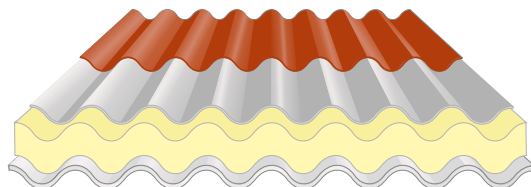
**7** Once main waterproofing layer is dry, tecnotop topcoat, or antiskid coatings can be applied.

*AVOID the use of silicone based mastics as they are not compatible. In the presence of roof repair coatings on the roof, check compatibility with Desmopol before applying the product.*

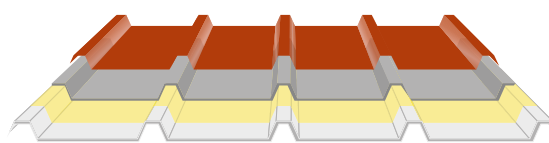
### \*\*PRIMERS

*For concrete, EPDM and TPO single ply the use of PU1000 primer is recommended.*

*However we advise to carry a patch test if you are not sure about the substrate.*

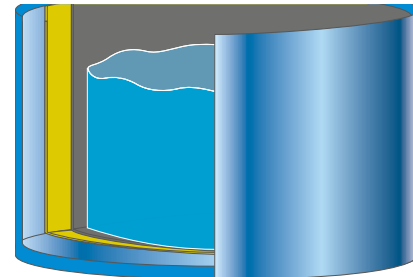
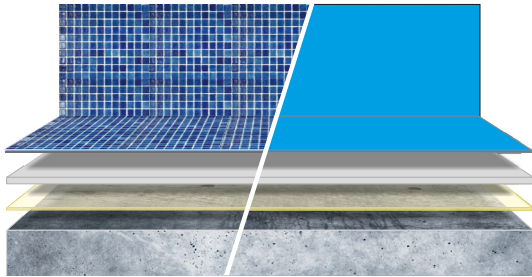


ASBESTOS OVERLAY



METAL ROOF REPAIRS





SWIMMING POOLS - TECNOTOP 2CP

POTABLE WATER TANKS DESMOPOL DW

### WHICH APPLICATION METHOD SHALL I USE?

FULLY REINFORCED	ACCELERATED	OTHERS
Single ply Overlay	Balconies	Asbestos
Plywood/OSB	*Concrete	Metals
Warm roof over PIR	*Asphalt	Swiming pools
Inverted roof	Walkways	Potable water tanks
Green roof		Transparent-Desmopol T
Torch on felt overlay		Heavy Traffic Tecnotop 3000
Asphalt		

\* Apply only accelerated system if the surface is flat and smooth with no splits, blisters or cracks.  
For full Application guides visit [www.eagle-insulations.com](http://www.eagle-insulations.com)

#### Our product range:

- Torch on roofing membranes
- Self-adhesive bitumen tanking membranes and gas barriers
- Acoustic membranes and damping sheets
- Single ply membranes
- Liquid waterproofing and bitumen solutions

Waterproofing and Insulation Systems



Tel | +44(0) 3304 004170 | [info@eagle-insulations.com](mailto:info@eagle-insulations.com)  
Fax | +44(0) 3304 004171 | [www.eagle-insulations.com](http://www.eagle-insulations.com)