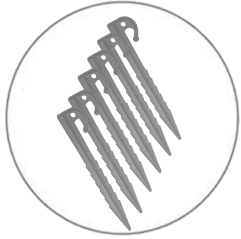


INFLATABLE

Projector Screen

COMPLETE MOVIE PROJECTOR SCREEN KIT



6 - Stakes



6 - 13 Ft ropes



1 - 120V air blower



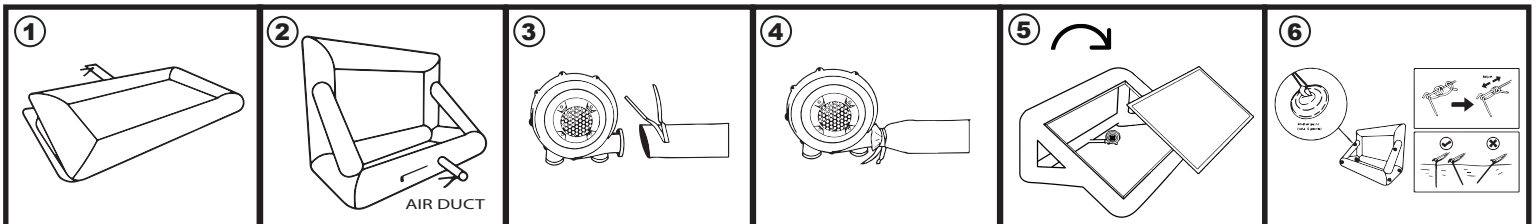
1 - Carrying bag



1 - Projection screen

INFLATABLE PROJECTOR SCREEN ASSEMBLY:

1. Take out the projector screen from the storage bag and flatten out across the place that you'll be inflating it in.
2. Find the air blower duct and place the air blower away from anything that may obstruct its fan.
3. Connect air blower to projector screen air duct and tie securely with attached strings.
4. Double-check the ties are secure and TURN ON the blower.
5. Once inflated, tilt back the inflatable frame with the Velcro seems facing up, and attach the white screen.
6. FOR OUTDOOR USE - Tie the ropes through each anchor point (total of 6 points) and secure them with tent stakes.



INFLATABLE PROJECTOR STORAGE INSTRUCTIONS:

1. Turn OFF the air blower, open zipper located around the air duct to release air, and disconnect the duct.
2. Flatten the screen with screen facing up to avoid dirtying the screen.
3. Fold in half 3 times vertically and roll them up (like a sleeping bag)
4. Place it bag in the carrying bag.

