

# CYCLONE POND PUMP™

Instruction Manual



---

Operates  
**IN OR OUT**  
of the water!

---

- PAL2100
- PAL3100
- PAL4000
- PAL5200
- PAL6550
- PAL8000
- PAL10300

**Alpine**  
CORPORATION



## Thank you for purchasing one of Alpine's Cyclone pumps.

At Alpine, our goal is to supply our customers with quality products that provide convenience and value to your life. We hope you enjoy your purchase and thank you for choosing Alpine: *Your One Stop Shop for all your Solar, Gift, Garden and Pond Supplies.*

Our Cyclone pumps are ideal for heavy duty waterfall or filter systems, as they have the needed power to move large quantities of water through your water feature. They are designed for continuous operation even in the harshest pond environments.

### TABLE OF CONTENTS

Introduction.....	2
Safety Information.....	2
Components and Pump Parts.....	3
Installation.....	4
Operation and Maintenance.....	6
Replacing the Impeller.....	7
Winter Pump Care.....	9
Troubleshooting.....	9
Replacement Parts List.....	10



### LIMITED 3 YEAR WARRANTY

At their own discretion, Alpine Corporation will repair or replace any pump found to have Manufacturer's defects as follows: Pump body, cover, filter and accessories within three years of original purchase. Impeller and internal moving parts are warranted for one year of original purchase. This warranty does not cover any replaceable filtering material supplied with the pump or filter as it is considered expendable. Proof of purchase is required. Warranty does not cover damage resulting from negligent handling, misuse or lack of reasonable maintenance or care. Warranty is valid against defects due to material and the company's workmanship only. The sole obligation is at Alpine's discretion to replace/repair the defective unit with a suitable replacement part. Units should be checked for proper operation prior to returning as defective. No liability for loss or damage of any nature or kind, whether arising out of or from the use of the product, whether defective or not defective, is assumed by Alpine Corporation or its affiliates. Damaging, cutting or altering power cord, removing or defacing product labels voids any warranty consideration. Damages or injuries resulting from negligence or misuse of the product are not covered by warranty.

# INTRODUCTION

The Cyclone pump is ideal for pond owners looking for energy-efficient performance, flow, and ease of maintenance. The Cyclone pumps come with a high-performance, extremely sturdy, asynchronous motor and 33-foot cord. This versatile pump can be used vertically, horizontally, and in or out of water. The pump features simple maintenance, with a removable rotor assembly, water-resistant ceramic bearings for continuous and trouble-free use. Your Alpine Cyclone pump is oil-free, magnetic-driven and is epoxy protected, with a ceramic shaft for long lasting dependable performance. This pump is equipped with a pre-filter cage which handles solids up to a quarter inch in size.

For a car to stay in great condition, proper maintenance is required. Therefore, Alpine suggests that once a week, you verify that the pump is performing satisfactorily. If you detect a drop in pump performance (such as a decrease in water flow from the pump or to the waterfall), first clean the pump's pre-filter cage and the tubing connected to the pump. If the water flow is still not fully restored to its original performance, simply clean the impeller and internal pump body. (See page 6 for maintenance instructions)

## SAFETY INFORMATION

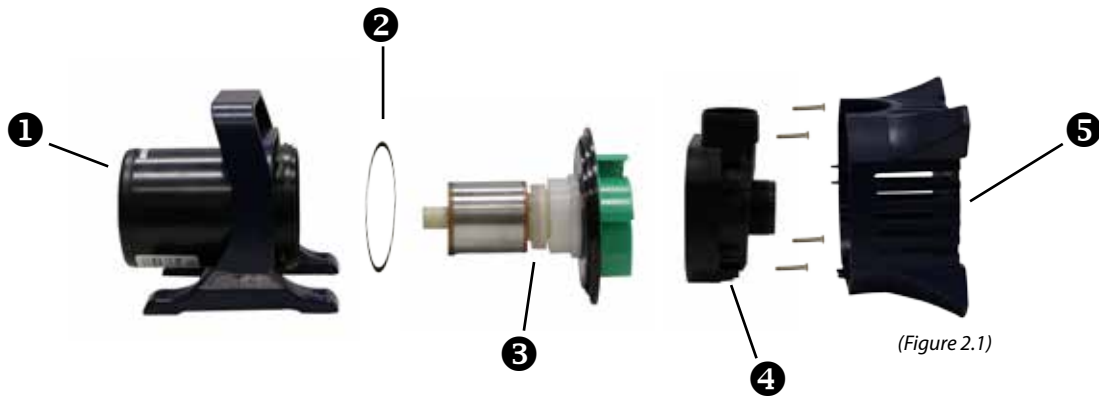
- ⚠ **WARNING:** Risk of electric shock – This pump has not been approved for use in swimming pool or marine areas
- ⚠ **WARNING:** To provide continued protection against risk of electric shock, connect to properly grounded, ground fault circuit interrupter (GFCI) outlets only, using the following guidelines:
  - (A) Read and follow all safety instructions and all the important notices on the appliance before using the pump. Failure to do so may result in loss of fish life and/or damage to this appliance.
  - (B) Have a qualified electrician install a properly grounded receptacle outlet, acceptable for outdoor use and protected from snow and rain.
  - (C) Any wiring of pumps should be performed by a qualified electrician to ensure code compliance and user safety.
  - (D) This is a pond pump. This pump has been evaluated for use with water only. Do not use this pump for other than intended use (*i.e.: do not use in swimming pools, aquariums, etc. Not to be used as a sump pump.*)
  - (E) Do not use this pump in swimming pools or other situations where people are immersed
  - (F) If an extension cord is necessary, ensure connection is watertight and dust proof. A cord with proper rating should be used. A cord rated for less amps or watts than the appliance rating may overheat. Care should be taken to arrange the cord so that it will not be tripped over or pulled. The connection should be carried out by a qualified electrical installer.
  - (G) Unplug pump at receptacle outlet when not in use or before removal from pond.
  - (H) To reduce risk of electrical shock, all wiring and junction connections should be made per local codes. Requirements may vary depending on usage and location.
  - (I) Inspect the power cable before using. The power cable should be protected at all times to avoid punctures, cuts, bruises and abrasions. Never cut the cord.
  - (J) Never handle power cords with wet hands.
  - (K) To avoid injury, do not touch moving or hot parts.
  - (L) Do not use power cable to lift pump. (*Figure 1.1*)



Figure 1.1

- ⚠ **IMPORTANT:** Alpine Corporation is not responsible for losses, injury, or death resulting from a failure to observe these safety precautions, misuse or abuse of pumps or equipment.

# COMPONENTS AND PUMP PARTS



(Figure 2.1)

<p><b>1</b> Pump Body</p>		<p><b>6</b> Rubber Fitting For Multi-Hose Adapter For Models: •PAL2100 •PAL5200 •PAL3100 •PAL6550 •PAL4000 •PAL8000</p>	
<p><b>2</b> O-Ring</p>		<p><b>7</b> Multi-Hose Adapter-0.75"-1.5 For Models: •PAL2100 •PAL5200 •PAL3100 •PAL6550 •PAL4000 •PAL8000</p>	
<p><b>3</b> Impeller</p>		<p><b>8</b> Multi-Hose Adapter-1"-1.25 For Models: •PAL2100 •PAL5200 •PAL3100 •PAL6550 •PAL4000 •PAL8000</p>	
<p><b>4</b> Pump Body Cover</p>		<p><b>9</b> 1 3/4" Adapter Fitting A. (PAL2100 - PAL3100) B. (PAL4000 - PAL8000)</p>	
<p><b>5</b> Pump Pre-filter Cage</p>		<p><b>10</b> 3 1/2" Adapter Fitting For Model: •PAL10300</p>	

(Chart 1.1)

# PUMP INFORMATION

ALPINE ITEM #	AMPS (MIN-MAX)	WATTS (MIN-MAX)	MAX FLOW	MAX HEIGHT	OUTLET CONNECTION	CORD LENGTH	GPH FLOW RATE							
							1ft	5ft	10ft	15ft	20ft	25ft	30ft	35ft
PAL2100	1.6	192	2100	20'	1 1/2"	33'	2070	1532	790	--	--	--	--	--
PAL3100	2.3	276	3100	21 1/2'	1 1/2"	33'	3070	2251	1390	479	--	--	--	--
PAL4000	2.55	306	4000	21'	2"	33'	3963	3052	2140	1229	317	--	--	--
PAL5200	3.55	426	5200	25'	2"	33'	5184	4230	3175	2121	1067	--	--	--
PAL6550	3.80	456	6550	26'	2"	33'	6505	5369	4132	2896	1659	422	--	--
PAL8000	4.50	540	8000	26'	2"	33'	7926	6439	4954	3467	1982	494	--	--
PAL10300	8	960	10300	40'	2 1/2"	33'	9885	8229	6168	4597	2756	1641	941	452

(chart 1.2)

## INSTALLATION

•Only operate the pump when it has water running through it. Failure to do so will overheat the pump and cause it to fail, thus voiding the warranty. **DO NOT OPERATE DRY!** If you are going to use your Cyclone pump "in-line" or "out of the water," you must prime the pump before turning it on. Priming a pump means to feed water into the tubing both in and out of the pump, to help create a suction effect to draw the water from the source. Failure to do so may cause your pump to run dry, because of air in the system- which could cause the pump to appear not to be working and will eventually burn out the pump altogether. Remember, running a Cyclone pump dry voids the warranty!

•Be sure that the pre-filter cage is fully snapped shut. Failure to operate the pump without the pre-filter cage on will allow large debris to enter the pump, causing the pump to fail and voiding the warranty. To protect your fish or other pond wildlife from being sucked into the pump, it is highly recommended to not operate the pump without the pre-filter cage on.

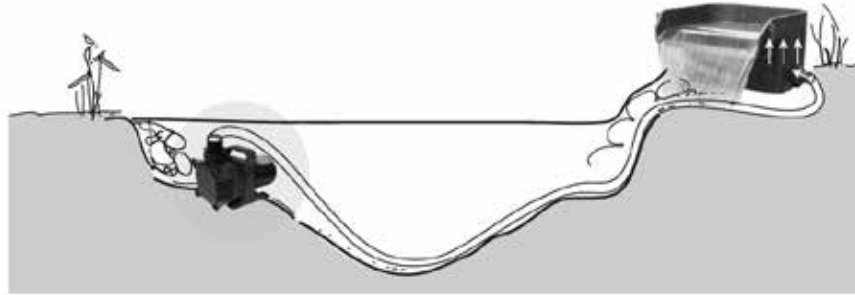


(Figure 3.1)

- Do not wear loose clothing that may become entangled in the impeller or other moving parts during installation.
- Keep clear of suction and discharge openings. DO NOT insert fingers in pump with power connected.
- Do not pump hazardous materials or liquids, such as oil, saltwater or organic solvents.
- Be sure no debris will block or restrict the pre-filter cage from water entering.

# TYPICAL INSTALLATION FOR YOUR POND

The Cyclone pump is designed to be submerged directly into the pond or out of the pond as long as water is running through the pump. To maximize pond circulation, locate the pump as far away as possible from the location of the water entering back into the water feature.



(Figure 3.2)

It is recommended that the pump is NOT positioned in the deepest area of the pond. This will protect the fish from suffocating by preventing the pond from completely draining in case of a leak in the tubing. Bricks or stones can be used, if needed, to raise the pump up off the bottom of the pond. The pump should be placed a maximum depth of 6.5 feet (2 meters).

<p><b>1</b> The Cyclone pump includes fittings for all water features.</p>	<p>(PAL2100 – PAL8000 only) (Figure 3.3)</p>	<p><b>5</b> If using tubing with a larger diameter than the smaller fittings of the Multi-Hose Adapters, cut off the smaller section to avoid any flow restriction. This way your pump will perform at optimal level.</p>	<p>(Figure 3.7)</p>
<p><b>2</b> A flat rubber washer seal is included for a hand-tight and leak-free connection. Make sure the flat rubber washer is in place before installing the fitting.</p>	<p>(Figure 3.4)</p>	<p><b>6</b> Attach the tubing to the multi-hose adapter. If the tubing is loose on the multi-hose adapter, use a hose clamp (not included) to secure the tubing to the fitting.</p>	<p>(Figure 3.8)</p>
<p><b>3</b> The threaded collar on all of the fittings enables the Cyclone pump to be installed and removed without the need for any tools. Do not use tools to attach the fittings onto the pump discharge as the tool might break the fitting. Fittings need to be hand-tightened only.</p>	<p>(Figure 3.5)</p>	<p><b>7</b> Connect the other end of the pump tubing to an Alpine pond filter, waterfall, or water feature.</p>	<p>(Figure 3.9)</p>
<p><b>4</b> Install the right-sized Multi-Hose adapter based on the diameter of the tubing you are using.</p>	<p>(Figure 3.6)</p>	<p><b>8</b> Place the pump into your water feature. Be sure it is fully submerged before plugging into a GFCI (ground fault circuit interrupter). Once the pump is running and water is circulating through the filter(s) or waterfalls, check for any fitting or waterfall leaks where the external connections are made.</p>	<p>(Figure 3.10)</p>

(Chart 2.1)

# OPERATION AND MAINTENANCE

---



**WARNING:** Always unplug or disconnect all appliances in the pond from the electrical supply before installing, repairing, maintaining or handling the equipment in the water.

**To avoid shortening the life of the pump, follow these simple maintenance procedures:**

-Once a week, verify that the pump performance is satisfactory. If you detect a drop in pump performance (such as a decrease in water flow from the pump or to the waterfall) first clean the pump's pre-filter cage and tubing. If the water flow is still not fully restored to its original performance, clean the impeller and internal pump body.

-The pump impeller includes a high quality ceramic shaft that provides long-lasting, reliable performance when properly maintained. However, extreme care should be taken when handling the shaft during maintenance. Avoid dropping or pressing too hard on it to avoid breakage or hairline fractures, which may cause the shaft to snap while in operation.

-This pump is suitable for use in water temperatures from 32 degrees Fahrenheit (0 degrees Celsius) to 95 degrees Fahrenheit (35 degrees Celsius).

-To keep the pump in long lasting working conditions, always replace any worn parts.

## **Pump Pre-Filter Cage**

Do not remove the pump's pre-filter cage while operating the pump. Failure to operate the pump without the pre-filter cage or operating the pump with a broken cage will allow large debris to enter the pump causing damage to the pump, thus voiding the warranty.



(figure 4.1)

## **Pump Pre-Filter Cleaning**

We recommend inspecting your pump on a regular basis to ensure it is functioning properly. If you notice the water flow rate diminish, it may be due to the pump's pre-filter cage being blocked with debris. In many cases, the clogged filter cage can be cleaned by reaching into the pond and pulling the pump out of the water to remove the debris from the filter cage.

**Important Note:** Always disconnect the power before performing maintenance on the pump. Pull off any debris stuck to the pump pre-filter cage and/or use a garden hose to spray off any debris stuck to the filter cage.

# REPLACING THE IMPELLER

If you have thoroughly cleaned the pre-filter cage and still have diminished flow rates, then you will need to remove and inspect the impeller and internal pump body.

**1** Remove the pre-filter by pulling the cage off the front of the pump.

(Figure 5.1)



**2** Remove the 4 screws securing the pump body cover to the pump body.

(Figure 5.2)



**3** Twist the pump cover to the left to remove the pump cover body.

(Figure 5.3)



**4** Pull the impeller out of the pump body.

(Figure 5.4)



**5** If your impeller and internal pump body have excessive scale build-up, clean with a mild acid, such as white vinegar or non-abrasive calcium, lime and rust remover product using a sponge or soft-bristled brush that won't scratch the stainless steel. Removing scale build-up will allow your pump to run like new again.

(Figure 5.5)



(Chart 3.1)



**6** After the impeller and internal body are cleaned, place the impeller back into the pump body. Twist the impeller to either the left or right until it clicks into place.

(Figure 5.6)



**7** There are pins on the pump body that the impeller will click into. The impeller has openings on the back for the pins to click into.

(Figure 5.7)



**8** Place the pump body cover 45 degrees to the left and twist to the right to lock into place.

(Figure 5.8)



**9** Connect the pump body cover to the pump body and secure by tightening with the 4 screws.

(Figure 5.9)



**10** Connect the pre-filter cage to the pump body by sliding into place.

(Figure 5.10)



(Chart 3.2)

# WINTER PUMP CARE

---

In cold climates, Alpine highly recommends to store your pump inside during the coldest months of the year. You may still use your Cyclone pump during the winter time, but the Cyclone pump cannot be used in below freezing temperatures. This pump is suitable for use in water temperatures from 32 degrees Fahrenheit (0 degrees Celsius) to 95 degrees Fahrenheit (35 degrees Celsius).

Please follow the steps below:

1. Disconnect the plug cord from the power supply.
2. Disconnect the tubing connected to the fitting.
3. Clean the pump and pre-filter with fresh water and store the pump in a frost-free location.

## TROUBLESHOOTING

---

<b>Problem</b>	<b>Solutions</b>
1. If your pump has reduced water flow	A. Pump or tubing may be clogged, check area around pump to be sure there is no debris blocking water from entering into the pump. B. It may be necessary to clean the pump pre-filter and impeller. For instructions on how to clean your pump please turn to page 6-8. C. If none of the above solve your issue, the impeller needs to be replaced.
2. If your pump hums and doesn't push water	A. Pump or tubing may be clogged, check area around pump to be sure there is no debris blocking water from entering into the pump. B. It may be necessary to clean the pump pre-filter and impeller. For instructions on how to clean your pump please turn to page 6-8. C. Make sure the pump is receiving the correct voltage. D. If none of the above solve your issue, the impeller needs to be replaced.
3. If your pump has completely shut-off	A. The ground-fault circuit interrupter (GFCI) may have tripped. B. Check the temperature of the water to ensure it's within the working temperatures. C. It may be necessary to clean the pump pre-filter and impeller. For instructions on how to clean your pump please turn to page 6-8. D. If none of the above solve your issue, the impeller needs to be replaced.
4. If your pump turns on and off	A. Pump or tubing may be clogged, check area around pump to be sure there is no debris blocking water from entering into the pump. B. It may be necessary to clean the pump pre-filter and impeller. For instructions on how to clean your pump please turn to page 6-8. C. Check the temperature of the water to ensure it's within the working temperatures. D. If none of the above solve your issue, the impeller needs to be replaced.

(Chart 4.1)

# REPLACEMENT PART LIST FOR CYCLONE PUMPS

Alpine Pump SKU#	Alpine Replacement Parts	Description
<b>Impeller</b>		
PAL2100	PAL2100-IMP	Impeller for PAL2100
PAL3100	PAL3100-IMP	Impeller for PAL3100
PAL4000	PAL4000-IMP	Impeller for PAL4000
PAL5200	PAL5200-IMP	Impeller for PAL5200
PAL6550	PAL6550-IMP	Impeller for PAL6550
PAL8000	PAL8000-IMP	Impeller for PAL8000
PAL10300	PAL10300-IMP	Impeller for PAL10300
<b>O-Rings</b>		
PAL2100	PAL2131-OR	O-Ring for PAL2100
PAL3100	PAL2131-OR	O-Ring for PAL3100
PAL4000	PAL4568-OR	O-Ring for PAL4000
PAL5200	PAL4568-OR	O-Ring for PAL5200
PAL6550	PAL4568-OR	O-Ring for PAL6550
PAL8000	PAL4568-OR	O-Ring for PAL8000
PAL10300	PAL10300-OR	O-Ring for PAL10300
<b>Fittings</b>		
PAL2100	RP-PAL23-FIT	Fitting for PAL2100
PAL3100	RP-PAL23-FIT	Fitting for PAL3100
PAL4000	RP-PAL4568-FIT	Fitting for PAL4000
PAL5200	RP-PAL4568-FIT	Fitting for PAL5200
PAL6550	RP-PAL4568-FIT	Fitting for PAL6550
PAL8000	RP-PAL4568-FIT	Fitting for PAL8000
PAL10300	PAL10300-FIT	Fitting for PAL10300

(Chart 5.1)