



Thank you for your purchase! We hope your family Enjoys our products as much as we do!

Our Patented Ground Level Trampoline Products have been engineered with safety, durability, and performance in mind. Please Read this information thoroughly before installation and be sure to visit us online for more installation tips and videos.

### **LED Lighting System Parts List:**

- 14' Round LED Strip light system
- UHF Remote
- 2 Triple AAA batteries
- RGBW color Changing Light Module
- 110 volt connection plug (6' extension)
- 44 Mounting clips and Screws

### **Things You Will Need**

- Power Drill (preferably cordless)
- Power Outlet or Extension Cord
  - Previously installed inside of the retaining wall system
  - Previously installed in nearby planter bed
  - Extension Cord if outlet is not previously installed

1. If your TDU Trampoline was previously Installed- Remove the Safety pad, jumping mat, and springs and set to the side. If you are installing the lights during your TDU Trampoline Installation- Begin Step 2 after the Retaining wall and Trampoline are built and placed in the ground.
2. Start by securing the Power inverter/Control Module by placing the base of the module 3" below the Trampoline Frame horizontal to the Trampoline Top Tube.

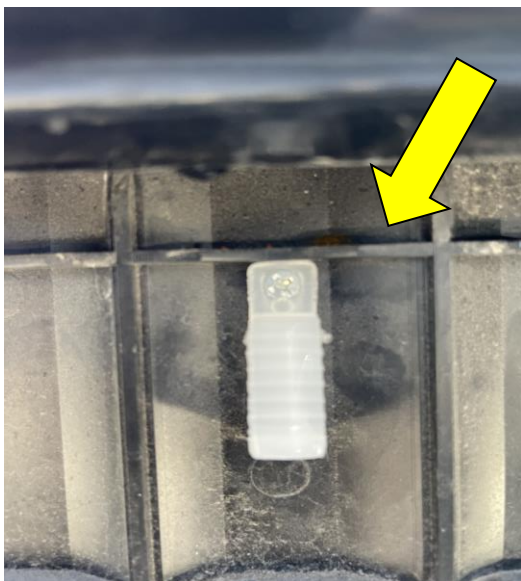




**\*\*NOTE:** The First clip should be placed approximately 12-14” away (clockwise) from the module to allow the start of the rope light to be placed in the first clip.



3. Once the module is secured with the 4 provided screws- begin by attaching the provided Rope light clips to the Retaining wall system- we recommend installing them directly under the 1<sup>st</sup> plastic lip - close to the Trampoline Frame. (see pic below)



4. Place each clip approximately 16-18” apart- or every 8-9 panel slots. Continue installation of clips around the entire trampoline , until you are back to the Control module.
5. Once you have installed the clips 16-18” apart around the entire retaining wall system- start the light installation by slipping the rope light into the first clip- LED Facing the inside of the hole.





6. Continue to work your way around clockwise – inserting the LED rope light into the Clips, while continuously keeping the rope light pulled tight-



**\*\* NOTE:** At each Trampoline Leg- you might wish to install an additional clip closer to the leg to help keep the rope light tight around the leg. Extra clips have been provided.



7. As you finish installing the LED Rope light simply check that the light is pulled tight between each clip, and remove an excess slack that may have occurred during installation.



8. Attach the 6' Plug Extension to the control module, by screwing in the connection piece to the receiving end. (Hand tight is sufficient.)



9. Remove the UHF Remote from the package, and install the 2 AAA Batteries (provided)

10. Once the Lighting module is plugged into a previously installed Power outlet, turn on the light system by pressing the power button on the Remote.



11. Re install the Jumping mat and Vented Safety Pad and Light up the Night!



©2021 Trampolines Down Under  
TDU LED LIGHTING  
INSTRUCTIONS

**Trampolines.com**  
**1-844-USA-JUMP**  
**orders@trampolines.com**