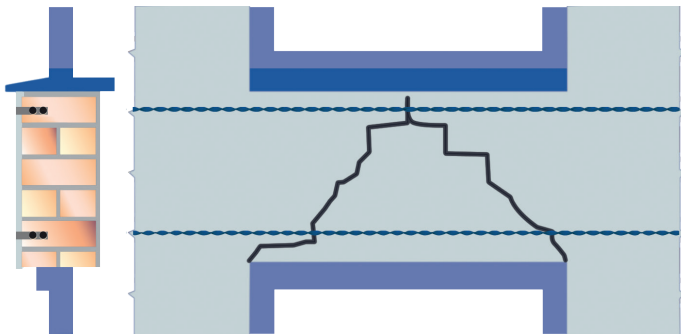


REPAIR OF FAILED LINTELS IN RENDERED SOLID WALLS USING STRUCSOL ULTRABAR



Recommended Tooling

- ❖ For cutting slots 40mm deep or over: Twin-bladed cutter with a vacuum attachment.
- ❖ For mixing StrucSol HSGrout: 3-jaw chuck drill with a mixing paddle.
- ❖ For injecting the StrucSol HSGrout, use the StrucSol Crack-stitching Gun and StrucSol Stainless Nozzle.
- ❖ To flatten the pointing, use the StrucSol Finger Trowel.
- ❖ For Injection of the StrucSol Crack Filler: A 400ml Mastic Gun is required.
- ❖ PPE Clothing and Protection.

General Notes

If you require specific advice on your project, please call the StrucSol technical help line 0116 2375082. We can supply a full support service which includes:

- ❖ Advice and assistance on all structural matters.
- ❖ Preparing repair proposals for specific projects.

Method Statement:

1. Using a twin bladed wall chaser, cut horizontal slots into the mortar joints to the specified depth and at the required vertical spacing. Make sure that no mortar is left in the cut slots in order to give an excellent bond.
2. Remove all dust and thoroughly flush with water. Make sure the slots are damp prior to injecting the StrucSol HSGrout.
3. Mix StrucSol HSGrout cementitious grout using a StrucSol paddle (+3-jaw chuck drill) and put into the StrucSol Crack-stitching Gun.
4. Inject a bead of StrucSol HSGrout, approx. 10mm deep into the back of the slot.
5. Insert the first 6mm StrucSol Ultrabar into the grout and obtain a good coverage.
6. Apply a further bead of StrucSol HSGrout over the StrucSol Ultrabar.
7. Insert the second 6mm StrucSol Ultrabar into the grout ensuring that it obtains a good coverage.
8. Apply a third bead of StrucSol HSGrout over the exposed StrucSol Ultrabar, and flatten out with a finger trowel, leaving around 10-15mm for making good the render.
9. The cracks within the render should be weather-proofed using StrucSol TE resin or StrucSol Crack Filler and leave ready for decoration. To achieve a near perfect look, use StrucSol Stain Colour Matching mortar.

- ❖ *Re-pointing can be carried out as soon as the StrucSol HSGrout has started to set and gel.*

SPECIFICATION NOTES

| | |
|---|--|
| A | Depth of slot to a minimum of 45mm to 55mm, plus the thickness of the render. |
| B | Top and bottom reinforcements should be positioned as far apart as practicable, up to a maximum distance equivalent to 12 brick courses, (approx. 900mm). |
| C | StrucSol Ultrabar to be long enough to extend a minimum of 500mm beyond each side of the opening. |
| D | Any fractures in the masonry within the 'beam zone' MUST be stabilised by crack-stitching, TE resin or replacement of the masonry. |
| E | Any missing or poor quality masonry MUST be replaced. |
| F | In hot conditions,, ensure that the masonry is flushed with water to prevent the premature curing of the StrucSol HSGrout. This should be carried out prior to injecting the StrucSol HSGrout into the mortar joint slots. |
| G | Do not use StrucSol HSGrout if the air temperature falls below 5°C or if ice starts to develop around the affected area. |
| The above specification notes are for general guidance only and StrucSol reserve the right to amend as necessary. | |