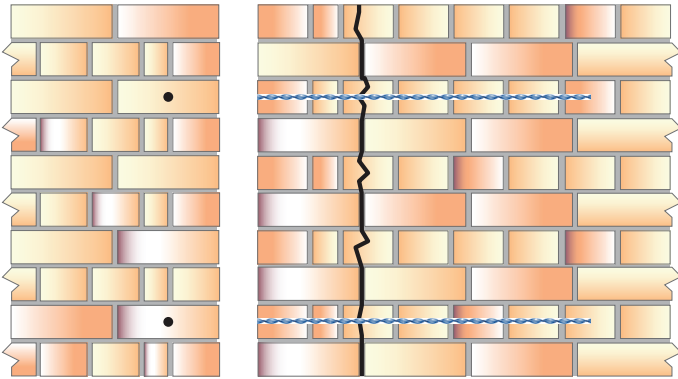


REPAIR OF A CRACK NEAR A CORNER IN A SOLID WALL USING GROUT TIES



Recommended Tooling

- ▣ For drilling: SDS rotary hammer drill 650 / 700w.
- ▣ For mixing StrucSol HSGrout: 3-jaw chuck drill with a mixing paddle.
- ▣ For installation of the Grout Ties: StrucSol Grout Tie Pointing Gun, StrucSol Grout Tie Pinning Nozzle.
- ▣ For Injection of the StrucSol Crack Filler: A 400ml Mastic Gun is required.
- ▣ PPE Clothing and Protection.

General Notes

If you require specific advice on your project, please call the StrucSol technical help line 0116 2375082. We can supply a full support service which includes:

- ▣ Advice and assistance on all structural matters.
- ▣ Preparing repair proposals for specific projects.

Method Statement:

1. Mark the positions for the holes on the outside face of the wall.
2. Drill a 16mm clearance hole at the required location through the brick quoin and into the back-up material to the required depth.
3. Remove all dust and thoroughly flush with water. Make sure the slots are damp prior to injecting the StrucSol HSGrout.
4. Attach the required length of Grout Tie Pinning Nozzle to the gun.
5. Mix StrucSol HSGrout cementitious grout using a StrucSol paddle (+3-jaw chuck drill) and put into the StrucSol Crack-Stitching Gun.
6. Pump grout to fill the nozzle.
7. Screw the Grout Tie into the nozzle and ensure that it is fully covered in grout.
8. Insert the nozzle to the full length of the drilled hole and pump the grout.
9. Make good all the holes at the surface and cracks using StrucSol TE resin or StrucSol Crack Filler and leave ready for decoration. To achieve a near perfect look, use StrucSol Stain Colour Matching mortar.

- ▣ *Re-pointing can be carried out as soon as the StrucSol HSGrout has started to set and gel.*

SPECIFICATION NOTES

A	StrucSol Grout Ties are to be installed at a vertical spacing of 450mm.
B	StrucSol Grout Ties are to extend at least 500mm past the crack.
C	Depth of hole to be Grout Tie length +25mm.
D	StrucSol Grout Ties are to be installed within the centre third of the wall.
E	If cracking occurs on both elevations, consider using StrucSol Ultrabar around the corner. If Grout Ties are to be used, they should be staggered between each elevation.
F	In hot conditions, ensure the masonry is well wetted or primed to prevent premature curing of the StrucSol HSGrout due to rapid de-watering.
G	Do not use StrucSol HSGrout when the air temperature is 4°C and falling, or apply over ice. In all instances, the hole MUST be thoroughly damp or primed prior to injection of the StrucSol HSGrout.
The above specification notes are for general guidance only and StrucSol reserve the right to amend as necessary.	