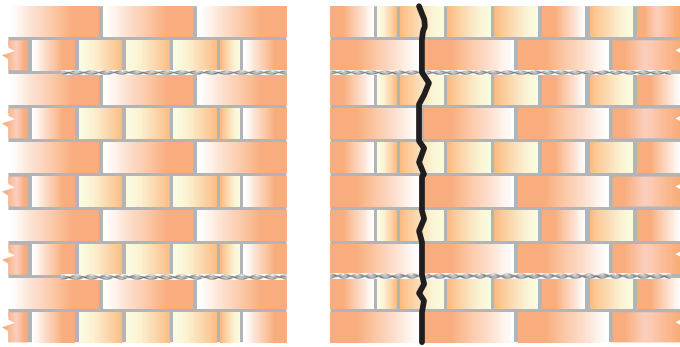


## REPAIR OF A CRACK NEAR A CORNER IN A SOLID WALL USING STRUCSOL ULTRABAR



### Method Statement:

1. Using a twin bladed wall chaser and vacuum attachment, cut slots into the brickwork to the specified depth and at the required vertical spacing. Ensure that no mortar is left attached to the exposed brick surfaces in order to provide a good masonry / grout bond.
2. Remove all dust and mortar from the slots and thoroughly flush with water. Ensure the slot is damp or primed prior to commencing step 4.
3. Mix StrucSol HSGrout using a power mixer and load into the Grout Pointing Gun.
4. Inject a bead of StrucSol HSGrout, approx. 15mm deep, into the back of the slot.
5. Push the 6mm StrucSol Ultrabar into the grout to obtain good coverage.
6. Inject a second bead of StrucSol HSGrout over the exposed StrucSol Ultrabar and iron it into the slot using a finger trowel. Inject additional StrucSol HSGrout as necessary, leaving 10-15mm for new pointing.
7. Point up the slots using a matching mortar. The cracks within the wall should be weather-proofed using StrucSol TE resin or StrucSol Crack Filler and leave ready for decoration. To achieve a near perfect look, use StrucSol Stain Colour Matching mortar.

### Recommended Tooling

- ☞ For cutting slots 40mm deep or over: Twin-bladed cutter with a vacuum attachment.
- ☞ For mixing StrucSol HSGrout: 3-jaw chuck drill with a mixing paddle.
- ☞ For injection of StrucSol HSGrout: Applicator gun + nozzle.
- ☞ For smoothing pointing: Standard Finger Trowel.
- ☞ For Injection of the StrucSol Crack Filler: A 400ml Mastic Gun is required.
- ☞ PPE Clothing and Protection.

### General Notes

If you require specific advice on your project, please call the StrucSol technical help line 0116 2375082. We can supply a full support service which includes:

- ☞ Advice and assistance on all structural matters.
- ☞ Preparing repair proposals for specific projects.
- ☞ *Pointing may be carried out as soon as is convenient after the StrucSol HSGrout has started to gel.*

### SPECIFICATION NOTES

The following criteria are to be used unless specified otherwise.

<b>A</b>	Depth of slot into the masonry to be 35mm to 45mm deep.
<b>B</b>	Height of slot to be equal to full mortar joint height, (minimum 500mm), either side of the crack or 500mm beyond the outer cracks if two or more adjacent cracks are being stitched using one rod.
<b>C</b>	StrucSol Ultrabar to be long enough to extend a minimum of 500mm beyond either side of the crack or 500mm beyond the outer cracks if two or more adjacent cracks are being stitched using one rod
<b>D</b>	Normal vertical spacing is 450mm (6 brick courses).
<b>E</b>	Where a crack is less than 300mm from the end of a wall or an opening, the StrucSol Ultrabar is to be continued for at least 100mm around the corner and bonded into the adjoining wall.
<b>F</b>	In hot conditions,, ensure the masonry is well wetted or primed to prevent premature curing of the StrucSol HSGrout due to rapid de-watering.
<b>G</b>	Do not use StrucSol HSGrout when the air temperature is 4°C and falling, or apply over ice. In all instances, the hole MUST be thoroughly damp or primed prior to injection of the StrucSol HSGrout. Store the grout and fluid component in a shaded area prior to use.

The above specification notes are for general guidance only and StrucSol reserve the right to amend as necessary.