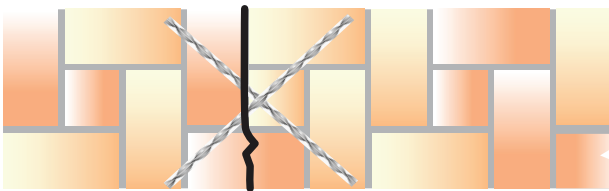
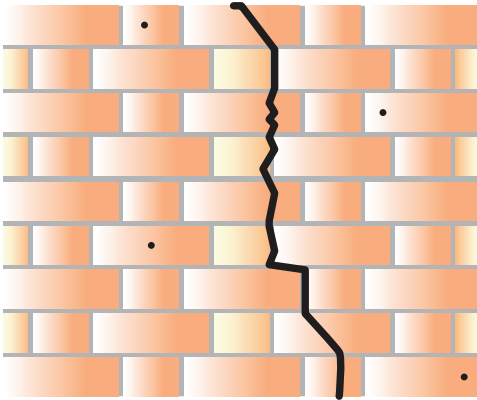


## CRACK-STITCHING A CRACKED SOLID WALL USING GROUT TIES



### Method Statement:

1. Mark positions for holes on the outer face of the wall.
2. Drill a 14mm clearance hole (16mm if the Grout Tie is longer than 450mm) at the required location and angle and to the specified depth.
3. Clean out ALL dust from the hole and thoroughly flush with water. Ensure the hole is damp or primed prior to commencing step 8.
4. Attach the required length of the Grout Tie Pinning Nozzle to the gun.
5. Mix cementitious grout using a power mixer and load into the Grout Tie Pointing Gun.
6. Pump grout to fill the nozzle.
7. Wind the Grout Tie into the nozzle and ensure that it is fully covered in grout.
8. Insert the nozzle to the full depth of the drilled hole and pump the grout.
9. Make good all the holes at the surface and cracks using StrucSol TE resin or StrucSol Crack Filler and leave ready for decoration. To achieve a near perfect look, use StrucSol Stain Colour Matching Mortar.

### Recommended Tooling

- ✓ For drilling: SDS Rotary hammer drill 650 / 700w.
- ✓ For mixing StrucSol HSGrout: 3-jaw chuck drill with mixing paddle.
- ✓ For insertion of Grout Ties: Grout Tie Pointing Gun.
- ✓ For Injection of the StrucSol Crack Filler: A 400ml Mastic Gun is required.
- ✓ PPE Clothing and Protection.

### General Notes

If you require specific advice on your project, please call the StrucSol technical help line +44 (0) 01162374394. We can supply a full support service which includes:

- ✓ Advice and assistance on all structural matters.
- ✓ Preparing repair proposals for specific projects.

## SPECIFICATION NOTES

This method would normally only be used to repair cosmetic cracks in thick solid walls that have rendering which is difficult to match up (e.g. pebble dash. Also used in random stone walls where lack of coursing prohibits use of stitches and for full structural cracks in random stone walls with rubble in fill.

- A** Grout Ties are to be installed perpendicular to the direction of the plane of the crack (e.g. in the horizontal plane for the vertical cracks and in the vertical plane for the horizontal cracks).
- B** Grout Ties are to start a minimum of 225mm away from the crack.
- C** Depth of hole to be Grout Tie length +25mm.
- D** Angle of drilling to be such, that the Grout Ties will pass through the crack within the centre third of the wall.
- E** Grout Ties are to start from alternate sides of the crack and to be at 225mm spacing measured along the length of the crack.
- F** In hot conditions,, ensure the masonry is well wetted or primed to prevent premature curing of the StrucSol HSGrout due to rapid de-watering.
- G** Do not use StrucSol HSGrout when the air temperature is 5°C and falling, or apply over ice. In all instances, the hole MUST be thoroughly damp or primed prior to injection of the StrucSol HSGrout.

The above specification notes are for general guidance only and StrucSol reserve the right to amend as necessary.

JT Consulting, Unit 5Q, Sibley Road Industrial Estate, Barrow Upon Soar, LE12 8LP

Tel 0116 2375082, Email: sales@strucsol.com, www.strucsol.co.uk

Company Reg 09707405

V.A.T Reg. GB230398223

Please always wear the appropriate safety and protective clothing when installing fixing and anchor products. Always observe the necessary Health & Safety guidelines.

© All text copyright. Above information is given as guidance only and should always be verified by a suitable engineer.

The above information is given in good faith, and may be subject to alteration at any time without prior notification.