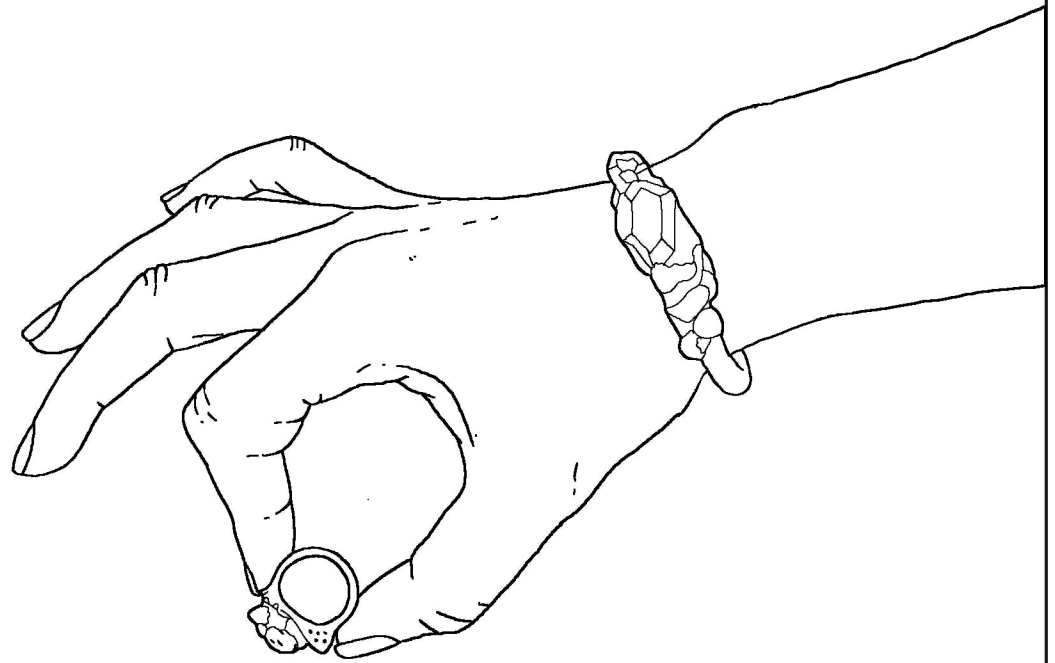


*Don't know your ring size? No problem! There are two surefire ways to figure it out.*

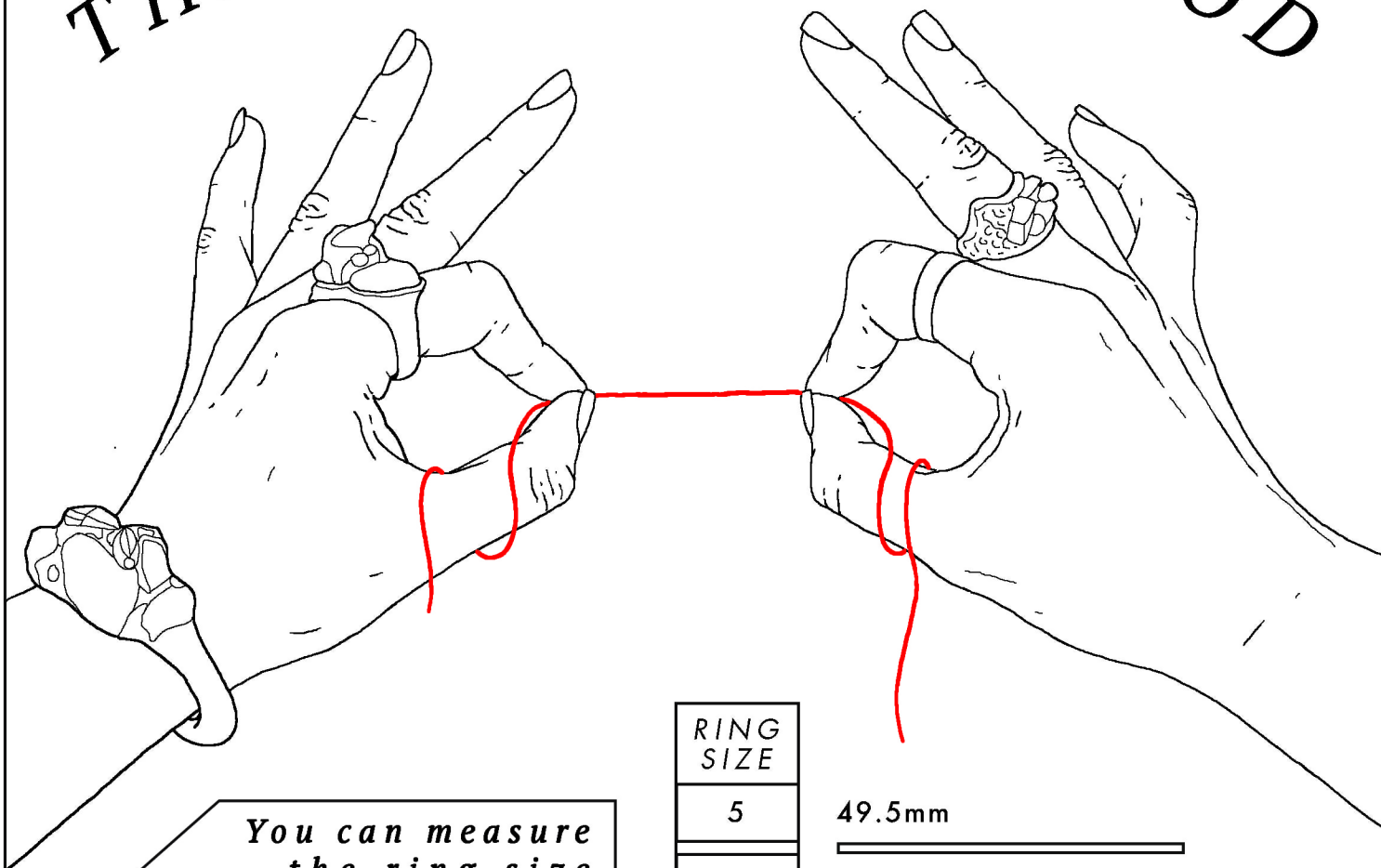
# THE "RING" METHOD



*If you have a ring you love and want another of the same size, it's easy as pie: print out this chart at 100% (8.5 x 11") on your printer and place your ring over the circles. Whichever circle matches the inside of the ring is the size you should get.*

<b>SIZE</b> <b>3</b>	<b>SIZE</b> <b>3.5</b>	<b>SIZE</b> <b>4</b>	<b>SIZE</b> <b>4.5</b>	<b>SIZE</b> <b>5</b>	<b>SIZE</b> <b>5.5</b>	<b>SIZE</b> <b>6</b>
14mm	14.4mm	14.8mm	15.2mm	15.6mm	16mm	16.45mm
<b>SIZE</b> <b>6.5</b>	<b>SIZE</b> <b>7</b>	<b>SIZE</b> <b>7.5</b>	<b>SIZE</b> <b>8</b>	<b>SIZE</b> <b>8.5</b>	<b>SIZE</b> <b>9</b>	
16.9mm	17.3mm	17.7mm	18.2mm	18.6mm	19mm	
<b>SIZE</b> <b>9.5</b>	<b>SIZE</b> <b>10</b>	<b>SIZE</b> <b>10.5</b>	<b>SIZE</b> <b>11</b>	<b>SIZE</b> <b>11.5</b>	<b>SIZE</b> <b>12</b>	
19.4mm	19.8mm	20.2mm	20.6mm	21mm	21.4mm	

# THE "STRING" METHOD



You can measure the ring size you want by measuring the diameter of your finger. To do that, cut a non-stretchy string, or a strip of paper, and wrap it around your finger of choice, just below the knuckle. (You'll want to make sure your ring can easily fit over it.) Once it's snug, mark both ends at the spot they meet with a pen. Voilà: the space between the two marks, in millimeters, is your ring size.

RING SIZE	
5	49.5mm
6	51.5mm
7	54mm
8	56.6mm
9	59.1mm
10	61.6mm
11	64.1mm
12	66.6mm
13	69.1mm
14	72.6mm