

# **25 Christmas Carol Favorites**

*for Tuba Quartet*

*arranged by*

**David Mathie**

**Cherry Classics Music**  
**[www.CherryClassics.com](http://www.CherryClassics.com)**

## Table of Contents

1.	Angels We Have Heard on High	Page 3
2.	Away in a Manger	3
3.	Bring A Torch	4
4.	Coventry Carol	5
5.	Deck the Halls	5
6.	The First Noel	6
7.	God Rest You Merry, Gentlemen	7
8.	Good Christian Men, Rejoice	8
9.	Good King Wenceslas	8
10.	Hark! the Herald Angels Sing	9
11.	The Holly and the Ivy	10
12.	I Saw Three Ships	11
13.	It Came Upon the Midnight Clear	11
14.	Joy to the World	12
15.	Lo, How a Rose E'er Blooming	12
16.	O Come, All Ye Faithful	13
17.	O Come, O Come, Emmanuel	14
18.	O Little Town of Bethlehem	15
19.	Silent Night	16
20.	Sussex Carol	16
21.	Wassail Song	17
22.	We Three Kings	18
23.	We Wish You a Merry Christmas	19
24.	What Child Is This?	20
25.	While Shepherds Watched	21

# 25 Christmas Carol Favorites

Score

for Tuba Quartet

Traditional  
arranged by David Mathie

## 1. Angels We Have Heard on High

Allegro ♩ = 126

Musical score for 'Angels We Have Heard on High' featuring Euphonium 1, Euphonium 2, Tuba 1, and Tuba 2. The score is in 4/4 time with a tempo of Allegro (♩ = 126). It includes dynamics markings of *mf* and repeat signs.

Continuation of the musical score for 'Angels We Have Heard on High', starting at measure 7. It includes first and second endings and concludes with a double bar line.

## 2. Away in a Manger

Moderato ♩ = 96

Musical score for 'Away in a Manger' featuring Euphonium 1, Euphonium 2, Tuba 1, and Tuba 2. The score is in 3/4 time with a tempo of Moderato (♩ = 96). It includes dynamics markings of *mf*.

# 25 Christmas Carol Favorites

Euphonium 1

for Tuba Quartet

Traditional  
arranged by David Mathie

## 1. Angels We Have Heard on High

Allegro ♩ = 126

Musical notation for the first carol, 'Angels We Have Heard on High'. It consists of two staves of music in bass clef, 4/4 time, with a key signature of one flat (B-flat). The first staff begins with a dynamic marking of *mf*. The second staff starts at measure 7 and includes first and second endings.

## 2. Away in a Manger

Moderato ♩ = 96

Musical notation for the second carol, 'Away in a Manger'. It consists of two staves of music in bass clef, 3/4 time, with a key signature of three flats (B-flat, E-flat, A-flat). The first staff begins with a dynamic marking of *mf*. The second staff starts at measure 9.

## 3. Bring a Torch

Allegro ♩ = 56

Musical notation for the third carol, 'Bring a Torch'. It consists of two staves of music in bass clef, 3/8 time, with a key signature of three flats (B-flat, E-flat, A-flat). The first staff begins with a dynamic marking of *mf*. The second staff starts at measure 13 and includes dynamic markings of *p* and *mf*.

## 4. Coventry Carol

Andante ♩ = 84

Musical notation for the fourth carol, 'Coventry Carol'. It consists of two staves of music in bass clef, 3/4 time, with a key signature of one flat (B-flat). The first staff begins with a dynamic marking of *p*. The second staff starts at measure 9 and includes a dynamic marking of *mf*.

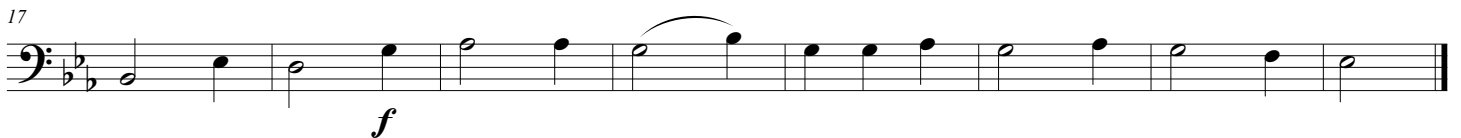
## 5. Deck the Halls

Allegro vivo  $\text{♩} = 92$



## 6. The First Noel

Moderato  $\text{♩} = 116$



## 7. God Rest You Merry, Gentlemen

Allegro vivo  $\text{♩} = 96$



## 8. Good Christian Men, Rejoice

Allegro giusto  $\text{♩} = 108$



### 9. Good King Wenceslas

Allegro giusto ♩ = 80

Musical notation for 'Good King Wenceslas' in bass clef, 2/4 time, key of B-flat major. The first line starts with a dynamic marking of *f*. The second line begins with a measure rest of 7 measures.

### 10. Hark! the Herald Angels Sing

Allegro ♩ = 120

Musical notation for 'Hark! the Herald Angels Sing' in bass clef, 4/4 time, key of B-flat major. The first line starts with a dynamic marking of *mf*. The second line begins with a measure rest of 7 measures and has a dynamic marking of *f*. The third line begins with a measure rest of 14 measures.

### 11. The Holly and the Ivy

Moderato ♩ = 108

Musical notation for 'The Holly and the Ivy' in bass clef, 3/4 time, key of B-flat major. The first line starts with a dynamic marking of *mf* and ends with *mp*. The second line begins with a measure rest of 9 measures and has a dynamic marking of *mf*.

### 12. I Saw Three Ships

Allegro giusto ♩ = 108

Musical notation for 'I Saw Three Ships' in bass clef, 6/8 time, key of B-flat major. The first line starts with a dynamic marking of *f*. The second line begins with a measure rest of 5 measures and includes first and second endings. The piece concludes with a *rit.* marking.

### 17. O Come, O Come, Emmanuel

Moderato ♩ = 92

Musical notation for 'O Come, O Come, Emmanuel' in bass clef, 3/4 time, key of B-flat major. The first staff starts with a dynamic marking of *f*. The second staff starts at measure 10 and includes dynamic markings of *mf* and *f*.

### 18. O Little Town of Bethlehem

Moderato ♩ = 112

Musical notation for 'O Little Town of Bethlehem' in bass clef, 3/4 time, key of B-flat major. The first staff starts with a dynamic marking of *p*. The second staff starts at measure 8 and includes dynamic markings of *mf* and *p*.

### 19. Silent Night

Andante ♩ = 76

Musical notation for 'Silent Night' in bass clef, 6/8 time, key of B-flat major. The first staff starts with a dynamic marking of *p*. The second staff starts at measure 7.

### 20. Sussex Carol

Moderato ♩ = 56

Musical notation for 'Sussex Carol' in bass clef, 6/4 time, key of B-flat major. The first staff starts with a dynamic marking of *mf*. The second staff starts at measure 5 and includes a dynamic marking of *mp*. The third staff starts at measure 10 and includes a dynamic marking of *f*.