

Erik SATIE

Six Gnossiennes

arranged for

Trombone & Piano

by

Ralph Sauer

These strange but beautiful pieces were composed in the 1890s and were notated without barlines or time signatures. They consist of hypnotic melodies supported by simple chord structures and are full of cryptic comments such as “*counsel yourself carefully*” and “*be clairvoyant.*” There are few restrictions on interpretation.

GNOSSIENNE No. 3

Lent

PIANO *p*

Gnossienne 1

Lent ($\text{♩} = \text{c. } 80$)

Musical notation for the first staff of Gnossienne 1, Trombone part. The staff is in 3/2 time with a key signature of three flats (B-flat, E-flat, A-flat). The tempo is marked 'Lent' with a quarter note equal to approximately 80 beats per minute. The music begins with a whole rest, followed by a series of eighth and quarter notes, all under a single slur. A dynamic marking of *p* (piano) is placed below the first measure.

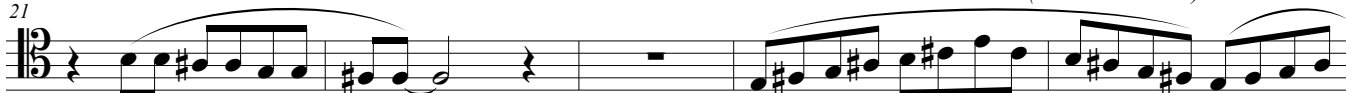
Musical notation for the second staff of Gnossienne 1, Trombone part. The staff continues from the first. It begins with a whole rest, followed by eighth and quarter notes under a slur. A dynamic marking of *mf* (mezzo-forte) is placed below the eighth measure, and a *dim.* (diminuendo) marking is placed below the final measure. The staff ends with a repeat sign.

Musical notation for the third staff of Gnossienne 1, Trombone part. The staff begins with a whole rest, followed by eighth and quarter notes under a slur. A dynamic marking of *f* (forte) is placed below the first measure. The tempo is marked 'Très luisant (shining)'. The staff concludes with a whole rest followed by a four-measure rest, indicated by a horizontal line with the number '4' above it.

Musical notation for the fourth staff of Gnossienne 1, Trombone part. The staff begins with a whole rest, followed by eighth and quarter notes under a slur. A dynamic marking of *mf/p* (mezzo-forte/piano) is placed below the first measure. The tempo is marked 'Questionnez (questioning)'. The staff concludes with a whole rest followed by a four-measure rest, indicated by a horizontal line with the number '4' above it.

Gnossienne 3

Lent (♩ = c. 96)

*p*6 *Conseillez-vous soigneusement (counsel yourself carefully)*11 *Munissez-vous de clairvoyance (be clairvoyant)*16 *Seul, pendant un instant (alone, for a moment)*21 *De manière à obtenir un creux (so as to be a hole)*

Gnossienne 5

Modéré (*souple et expressif*) (♩ = c. 48)
(flexible and expressive)

mf

4

7

7

10

3

3

6

Six Gnossiennes

Erik Satie
arr. Ralph Sauer

Gnossienne 1

Lent (♩ = c. 80)

Trombone

Piano

p

mf *dim.*

f *Très luisant (shining)*

f *p*

Gnossienne 3

Lent (♩ = c. 96)

Trombone

Piano

6

Conseillez-vous soigneusement (counsel yourself carefully)

11

Munissez-vous de clairvoyance (be clairvoyant)

Gnossienne 5

Modéré (*souple et expressif*) (♩ = c. 48)

Trombone

mf
(flexible and expressive)

Piano

mf

7

4

3

8

3

12