

# First Suite in E $\flat$ for Military Band

Full Score

Gustav Holst  
arranged by Angus Armstrong

## I. Chaconne

Allegro Moderato

Piccolo Trumpet in B $\flat$

The score is for the first movement, 'I. Chaconne', in 3/4 time, marked 'Allegro Moderato'. The key signature is E-flat major (three flats). The instrumentation includes Piccolo Trumpet in B $\flat$ , Eb Trumpet, Trumpet 3 in B $\flat$ , Trumpet 4 in B $\flat$ , Horn 1 in F, Horn 2 in F, Trombone 1, Trombone 2, Bass Trombone, Euphonium, and Tuba. The woodwinds and brass parts are mostly silent in this section, with some notes appearing in the Horns, Trombones, Euphonium, and Tuba. The Euphonium and Tuba parts feature a melodic line starting in the first measure, marked with a piano (*p*) dynamic. The percussion parts (Timpani - Triangle, Snare Drum - Tambourine, and Bass Drum - Cymbals) are also silent in this section.

Holst - First Suite in Eb for Military Band

103

Pic. Tpt. *p* cresc. poco a poco

Eb Tpt. cresc. poco a poco

Tpt 3. cresc. poco a poco

Tpt 4. cresc. poco a poco

Hn. 1. *p* cresc. poco a poco

Hn. 2. *p* cresc. poco a poco

Trb 1. cresc. poco a poco

Trb 2. cresc. poco a poco

B. Trb. cresc. poco a poco

Euph. cresc. poco a poco

Tba. cresc. poco a poco

Timp/Tri. *p* cresc. poco a poco

SD/Tmb. cresc. poco a poco

BD/Cym. *p* cresc. poco a poco

Holst - First Suite in Eb for Military Band

127 *rit.*

Pic. Tpt

Eb Tpt

Tpt 3

Tpt 4

Hn. 1

Hn. 2

Trb 1

Trb 2

B. Trb

Euph.

Tba.

*rit.*

To Triangle

To Tambourine

Timp/Tri

SD/Tmb.

BD/Cym

Detailed description: This page of a musical score for a military band, measures 127-131. The score is in E-flat major (three flats) and 4/4 time. It features a 'rit.' (ritardando) marking at the beginning of measure 127, which extends across the first two staves. The instruments are arranged in a standard military band layout. The Piccolo Trumpet (Pic. Tpt) and E-flat Trumpet (Eb Tpt) parts are in the top two staves, both playing a melodic line with slurs and accents. The Trumpets 3 and 4 (Tpt 3, Tpt 4) play a rhythmic accompaniment. The Horns 1 and 2 (Hn. 1, Hn. 2) play a similar melodic line to the Piccolo and E-flat Trumpets. The Trombones 1 and 2 (Trb 1, Trb 2) play a rhythmic accompaniment. The Bass Trombone (B. Trb) plays a rhythmic accompaniment. The Euphonium (Euph.) and Tuba (Tba.) play a melodic line with slurs and accents. The Percussion parts include Timpani/Triple Drum (Timp/Tri), Snare Drum/Tambourine (SD/Tmb.), and Bass Drum/Cymbal (BD/Cym). The Timp/Tri part has a 'rit.' marking and a 'To Triangle' instruction. The SD/Tmb. part has a 'To Tambourine' instruction. The BD/Cym part has a 'rit.' marking. The score ends with a double bar line at the end of measure 131.



Holst - First Suite in Eb for Military Band

262

Picc. Tpt.

Tpt 2

Tpt 3

Tpt 4

Hn. 1

Hn. 2

Trb 1

Trb 2

B. Trb

Euph.

Tba

Triangle

Timp/Tri

Tamb.

BD/Cym

8

12

*p*

Detailed description: This is a page of a musical score for a military band, specifically the First Suite in E-flat major by Gustav Holst. The page is numbered 262 at the top left. The score is arranged in a grand staff format with 13 staves. The instruments are: Piccolo Trumpet (Picc. Tpt.), Trumpets 2, 3, and 4 (Tpt 2, 3, 4), Horns 1 and 2 (Hn. 1, 2), Trombones 1 and 2 (Trb 1, 2), Bass Trombone (B. Trb), Euphonium (Euph.), Tuba (Tba), Triangle, Snare Drum (Timp/Tri), Snare Drum (Tamb.), and Bass Drum/Cymbal (BD/Cym). The key signature is E-flat major (two flats). The time signature is 4/4. The Piccolo Trumpet part begins with a rest and then plays a melodic line starting in the fourth measure, marked with a piano (*p*) dynamic. The other instruments have various parts, including rhythmic patterns and melodic lines. The Bass Trombone part has a '8' above the first measure and a '12' above the fourth measure, likely indicating a measure rest. The Triangle part has a 'Triangle' label above the staff with a triangle symbol. The Snare Drum part has a 'Timp/Tri' label above the staff. The Bass Drum/Cymbal part has a 'BD/Cym' label above the staff.

Holst - First Suite in Eb for Military Band

271

Picc. Tpt.

Tpt 2

Tpt 3

Tpt 4

Hn. 1

Hn. 2

Trb 1

Trb 2

B. Trb

Euph.

Tba

Timp/Tri

Tamb.

BD/Cym

To Snare Drum

Detailed description: This page of a musical score for a military band, measures 271-274. The score is in E-flat major (three flats) and 2/4 time. The instruments listed are Piccolo Trumpet, Trumpets 2, 3, and 4, Horns 1 and 2, Trombones 1 and 2, Bass Trombone, Euphonium, Tuba, and Percussion (Tympani/Triple Drum, Snare Drum, and Bass Drum/Cymbal). The Piccolo Trumpet part begins with a melodic line in measure 271, which continues through measure 274. The other instruments provide harmonic support and rhythmic patterns. The percussion parts are mostly rests, with a specific instruction 'To Snare Drum' for the Snare Drum part in measure 271.

## Holst - First Suite in Eb for Military Band

## III. March

Tempo di Marcia ♩ = 120

Piccolo Trumpet in B♭ *tr*  
*ff*

Tpt 2 in E♭ *ff*

Tpt 3 in B♭ *tr*  
*ff*

Tpt 4 in B♭ *ff*

Horn 1 in F *ff*

Horn 2 in F *ff*

Trombone 1 *ff*

Trombone 2 *ff*

Bass Trombone *ff*

Euphonium *ff*

Tuba *ff*

Tempo di Marcia ♩ = 120

Timpani - Triangle

Snare Drum - Tambourine

Bass Drum - Cymbals

Holst - First Suite in Eb for Military Band

350

Picc. Tpt.

Tpt 2

Tpt 3

Tpt 4

Hn. 1

Hn. 2

Trb 1

Trb 2

B. Trb

Euph.

Tba

Timp/Tri

SD/Tmb.

BD/Cym

*p*

*p*

*f*

*f*

Detailed description: This page of a musical score for a military band, measures 350-359. The score is in E-flat major (three flats) and 2/4 time. The instruments listed are Piccolo Trumpet, Trumpets 2, 3, and 4, Horns 1 and 2, Trombones 1 and 2, Bass Trombone, Euphonium, Tuba, and Percussion (Timp/Tri, SD/Tmb., BD/Cym.). The Piccolo Trumpet part is mostly rests. Trumpets 2 and 3 play a melodic line starting in measure 351 with a piano (*p*) dynamic. Trumpet 4, Horn 1, and Horn 2 play a sustained harmonic line with a crescendo to forte (*f*) in measure 355. Trombone 1 and 2 are mostly rests. Bass Trombone, Euphonium, and Tuba play a rhythmic accompaniment. The percussion parts are mostly rests.



Holst - First Suite in Eb for Military Band

447

Picc. Tpt.

Tpt 2

Tpt 3

Tpt 4

Hn. 1

Hn. 2

Trb 1

Trb 2

B. Trb

Euph.

Tba

Timp/Tri

SD/Tmb.

BD/Cym

Cym

BD/Cym

Detailed description: This page of a musical score for a military band, numbered 447, features ten staves for woodwinds and brass instruments, and three staves for percussion. The Piccolo Trumpet (Picc. Tpt.) part begins with a rest and then plays a triplet of eighth notes. The Trumpets (Tpt 2, 3, 4) and Horns (Hn. 1, 2) parts consist of rhythmic patterns of eighth and quarter notes with accents. The Trombones (Trb 1, 2, B. Trb) and Euphonium (Euph.) parts play sustained notes with accents. The Tuba (Tba) part has a triplet of eighth notes. The Timp/Tri part has a single note. The Snare Drum/Tom-tom (SD/Tmb.) part has a rhythmic pattern of eighth notes. The Bass Drum/Cymbal (BD/Cym) part has a cymbal roll and a bass drum hit.

# First Suite in E $\flat$ for Military Band

Piccolo Trumpet in B $\flat$

## I. Chaconne

Gustav Holst  
arranged by Angus Armstrong

**Allegro Moderato** **23** **A** stacc.

29

33 *f*

39 *ff*

42 **B** **Brillante**

46

49 **Pesante** **7** *p* **C** *mute*

60

66

72 *open* **2** *p*

79

# First Suite in E $\flat$ for Military Band

E $\flat$  Trumpet

## I. Chaconne

Gustav Holst  
arranged by Angus Armstrong

**Allegro Moderato** **15**

*pp*

20 **2**

26 **A** stacc. *mf*

30 *f*

35

40 **B** **Brillante** *ff*

44

50 **Pesante** *p* **C** **2** *mute*

60 *p* **2** **3**

67 **3** **3** **3**

71 **3** **3** **3** **3** *open fast* *p*

# First Suite in E $\flat$ for Military Band

Horn 1 in F

## I. Chaconne

Gustav Holst  
arranged by Angus Armstrong

**Allegro Moderato**

7 *p*

16 *stacc.*  
*cresc.*

25 **A** 6 2 2 *mf* *f*

41 **B** **Brillante** *ff*

45

50 **Pesante**

56 **C** 7 *p*

68

74 **D** **Pesante** 6

88 **E** 4 6 *p*

# First Suite in E $\flat$ for Military Band

Trombone 1

## I. Chaconne

Gustav Holst  
arranged by Angus Armstrong

Allegro Moderato

7

*p*

16

8

**A** stacc.

*mf*

30

*f*

38

**B** *Brillante*

*ff*

47

*Pesante*

54

**C**

21

*p*

80

**D** *Pesante*

*p*

89

**E**

*p*

100

cresc. poco a poco

110

**F** *Maestoso*

*ff*

120

*soli*

127

*rit.*

# First Suite in E $\flat$ for Military Band

Bass Trombone

## I. Chaconne

Gustav Holst  
arranged by Angus Armstrong

Allegro Moderato

7

14 *p* 8 **A** stacc. *mf*

28 *mf*

33

42 **B** *f* **Brillante** *ff*

50 **Pesante**

55 **C** 23 *p*

82 **D** *p* **Pesante** 7

94 **E**

101 *cresc. poco a poco*

110 2

115 **F** **Maestoso** *ff*

120 3 *rit.*

128

# First Suite in E $\flat$ for Military Band

Euphonium

## I. Chaconne

Gustav Holst  
arranged by Angus Armstrong

Allegro Moderato

10 *p*

23 *pp* **A**

31 *mf*

39 *f* **B** *Brillante* 2

46 2 *Pesante*

53 **C**

59 22 **D** *Pesante* *p*

89 *p*

96 **E**

103

112 **F** *Maestoso* *cresc. poco a poco*

120 *ff*

127 *rit.*

Tuba

# First Suite in E $\flat$ for Military Band

## I. Chaconne

Gustav Holst

arranged by Angus Armstrong

Allegro Moderato

1

11

14

A

mf

32

f

41

B Brilliante

ff

50

Pesante

57

C

22

D Pesante

p

p

83

90

96

E

p

103

cresc. poco a poco

V.S.



# First Suite in E $\flat$ for Military Band

Snare Drum - Tambourine

## I. Chaconne

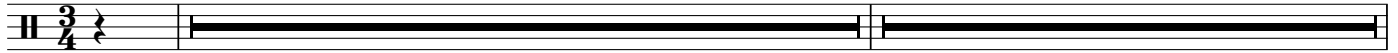
Gustav Holst  
arranged by Angus Armstrong

Allegro Moderato

24

A

6



32

Snare



36



41

B

Brillante



44

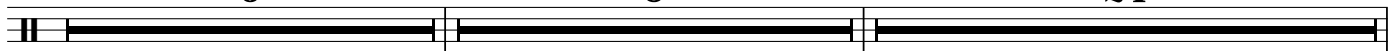
6

Pesante

8

C

24

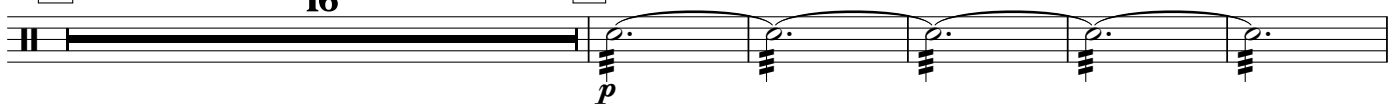


82

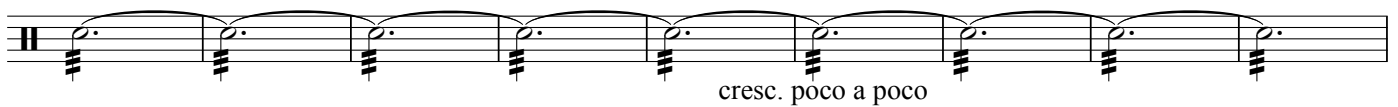
D Pesante

16

E



103

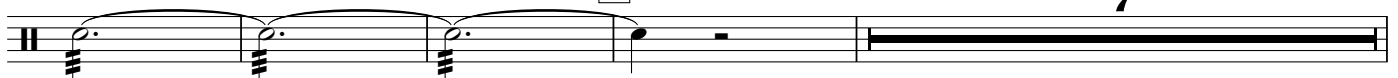


112

F

Maestoso

7



123

rit. . . . .

To Tambourine



# First Suite in E $\flat$ for Military Band

Gustav Holst  
arranged by Angus Armstrong

Bass Drum - Cymbals

## I. Chaconne

Allegro Moderato

24 A 15

41 BD/Cym B **Brillante** Pesante 8

58 C *ff* 22 roll with timp sticks Cym D Pesante

BD *p* *pp*

83

91

98 E 8 BD *p* cresc. poco a poco

112 F **Maestoso** 11 rit. . . . .

128

## II. Intermezzo

Vivace ♩ = 160

24 G 16 H 24

199 I 17 J 15 10

L'Istesso Tempo