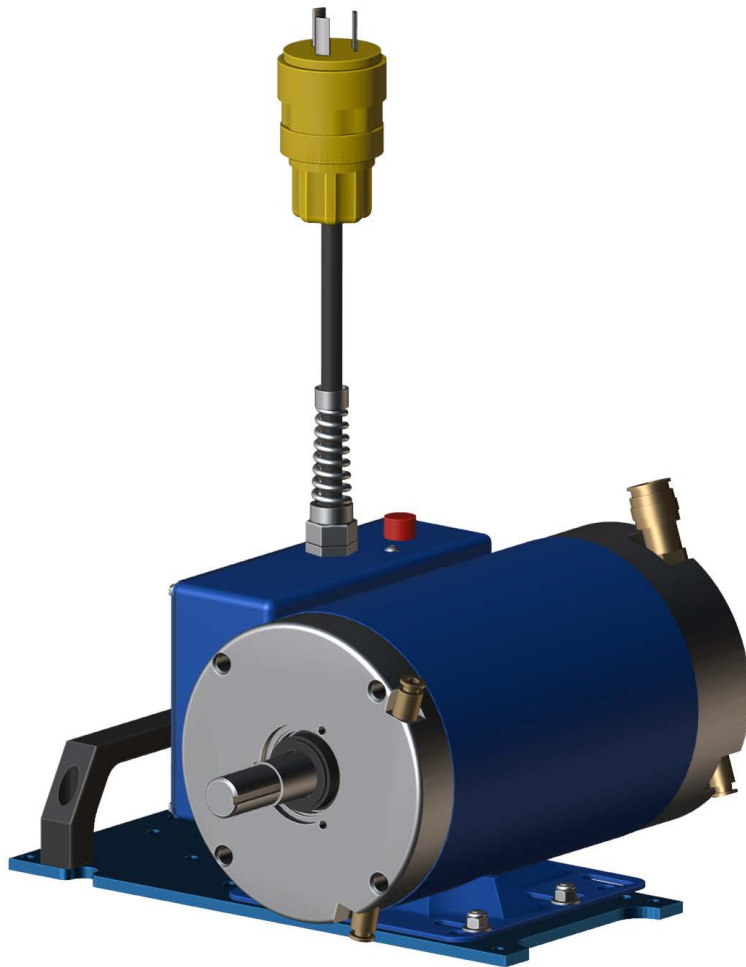
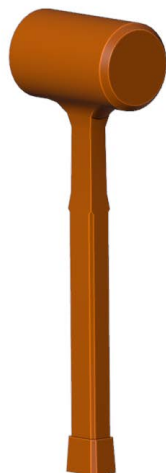


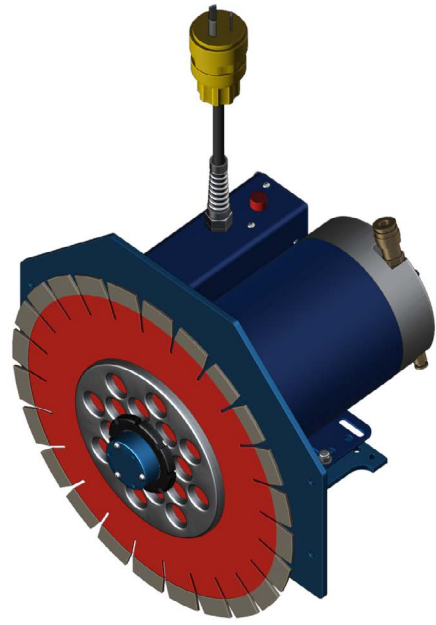
HOW TO REPLACE MOTOR BEARINGS ON PRE 2022 BRSR 5HP MOTOR



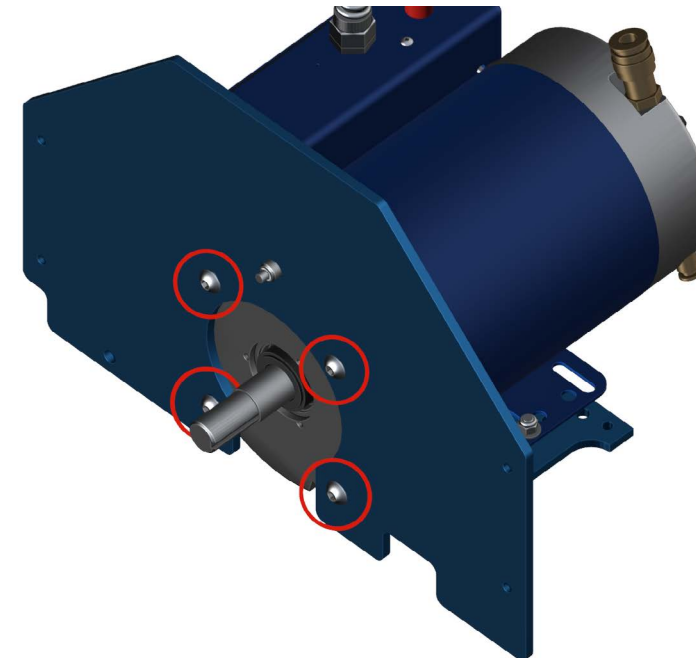
TOOLS YOU MAY NEED:

Bearing Puller Dead Blow Mallet american standard hex key



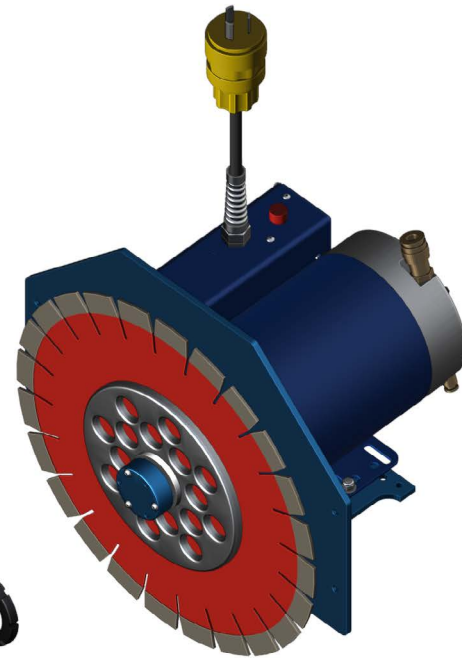


STEP 1
remove the front guard



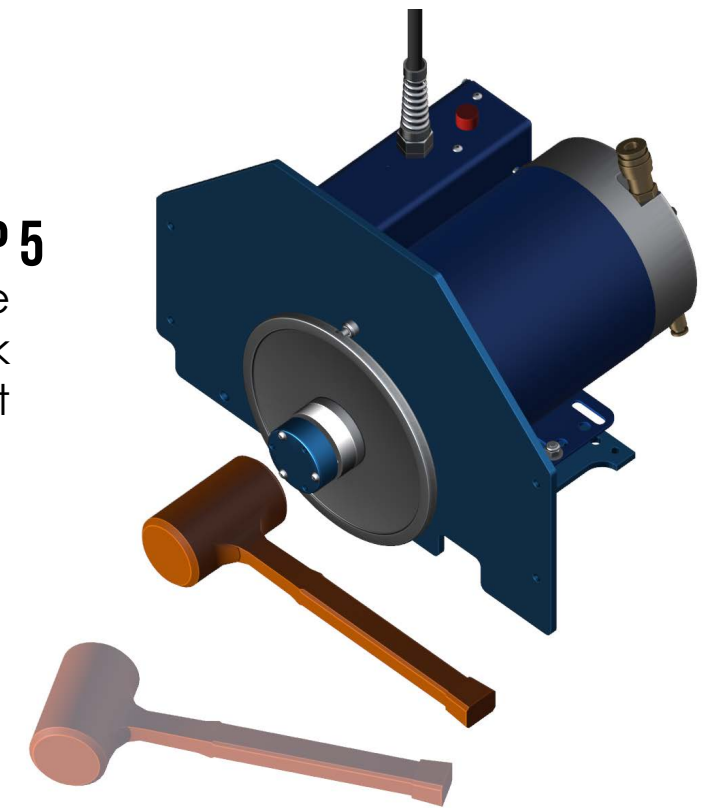
STEP 4
untighten the 3 screws to
release the taper lock sys-
tem from the motor shaft

STEP 2
untighten the blade
locking nut to remove

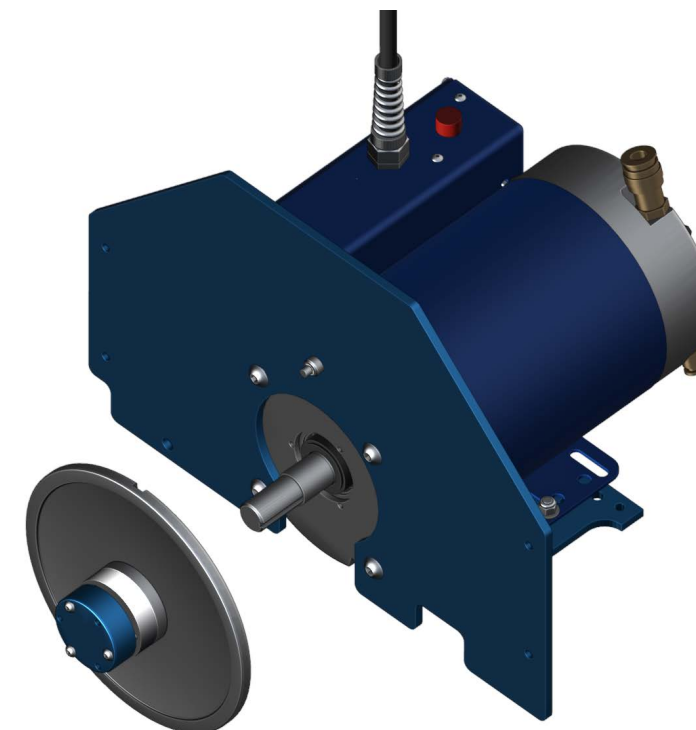
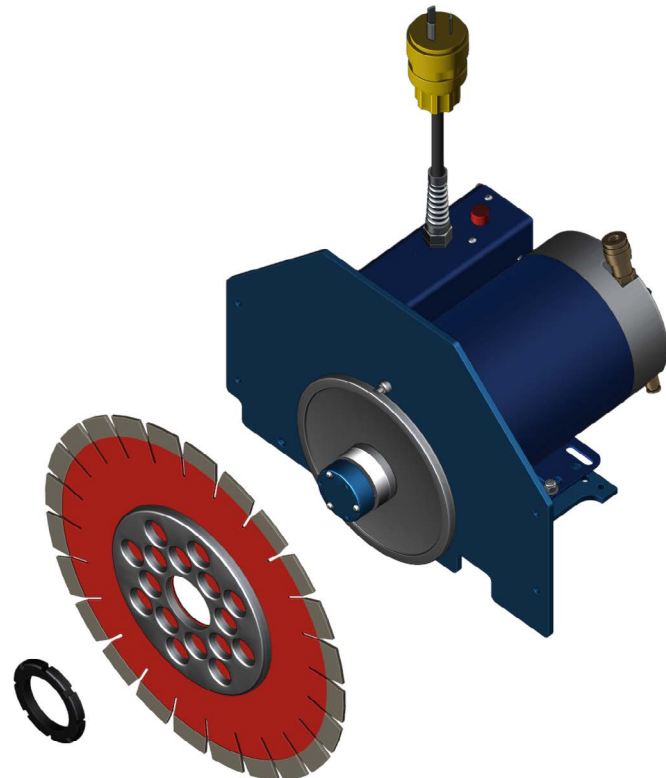


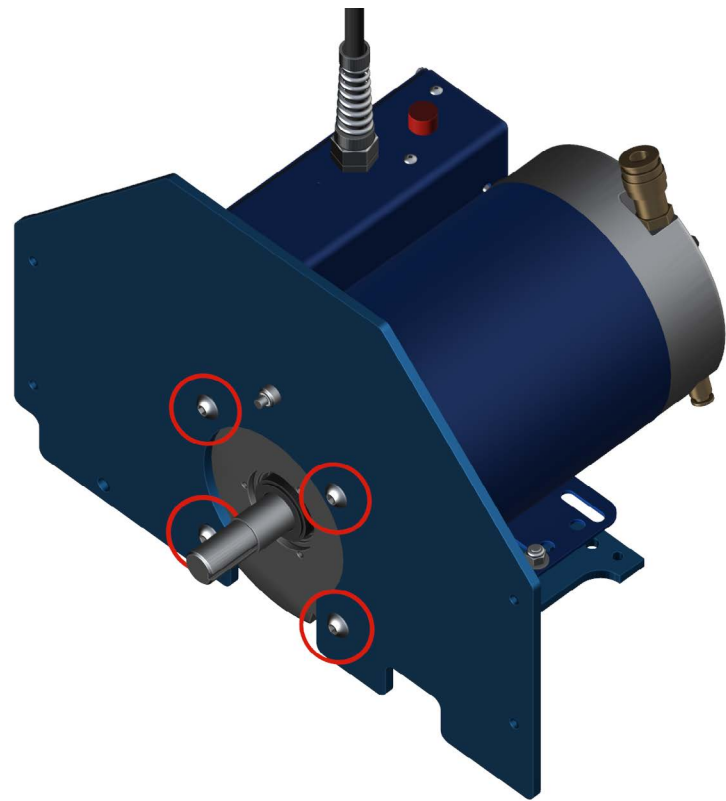
STEP 3
remove blade assembly

STEP 5
take a mallet and hit the blue
cap to loosen the taper lock
collet from the motor shaft

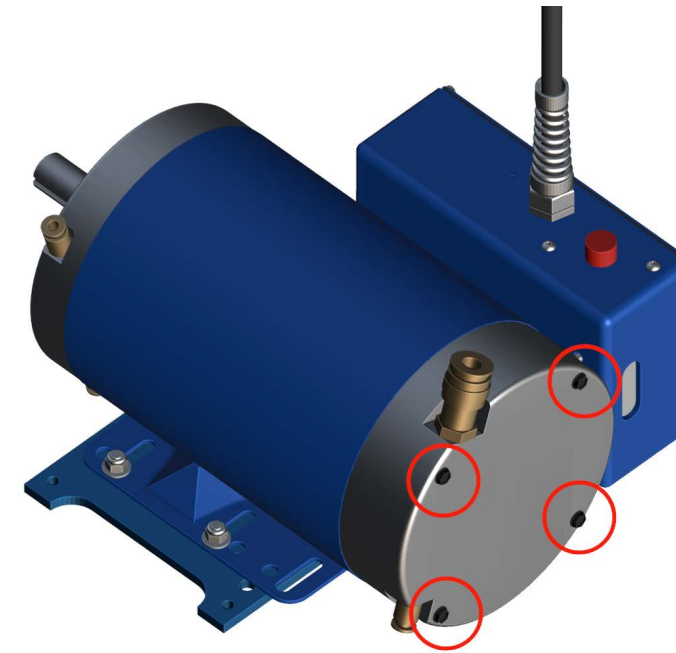


STEP 6
remove the rear flange



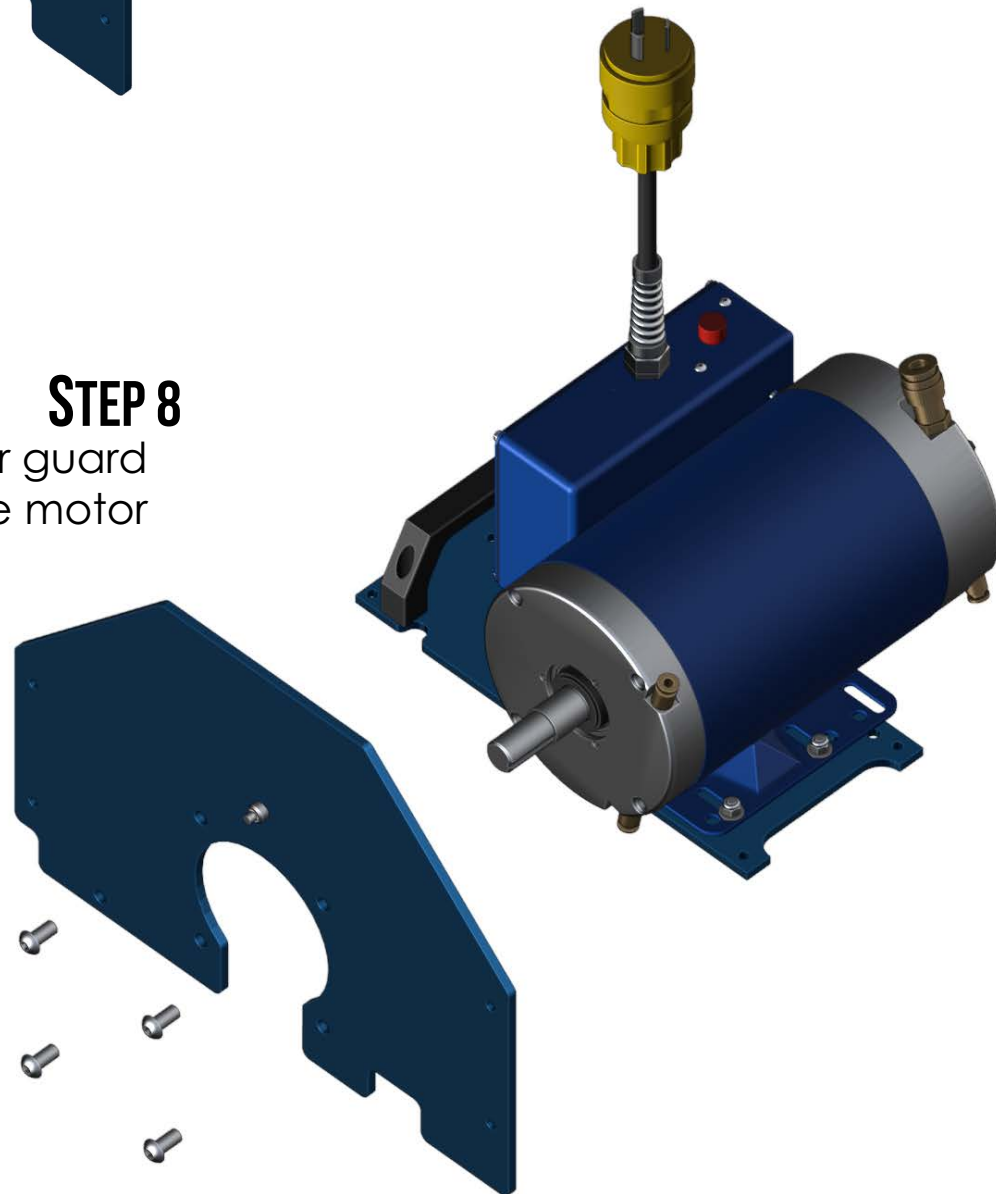


STEP 7
unscrew the four 3/8-16 x
0.750 inch screws

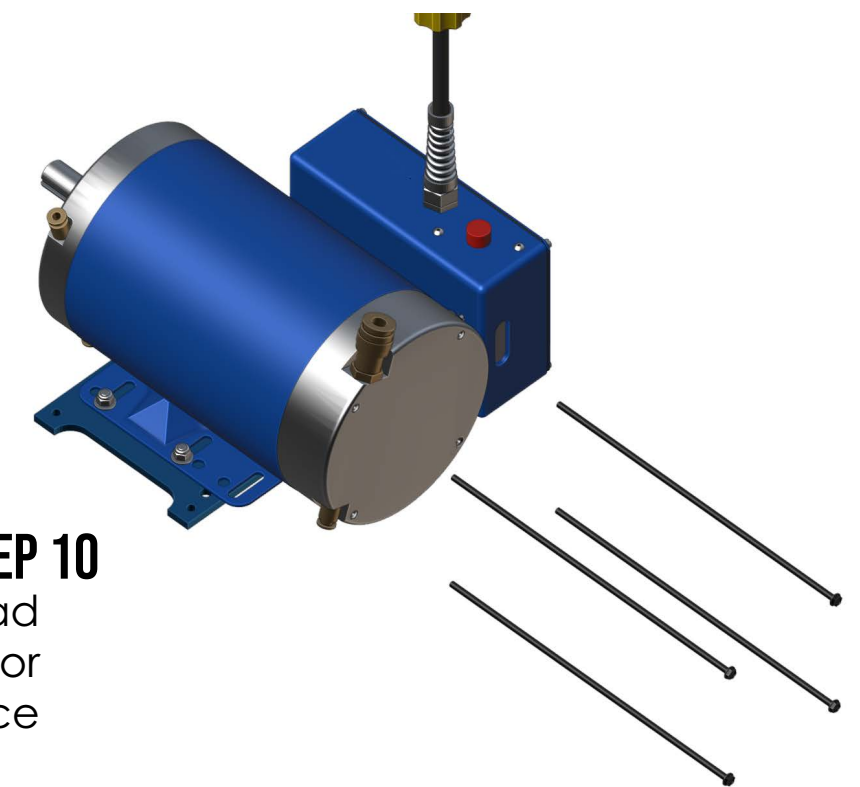


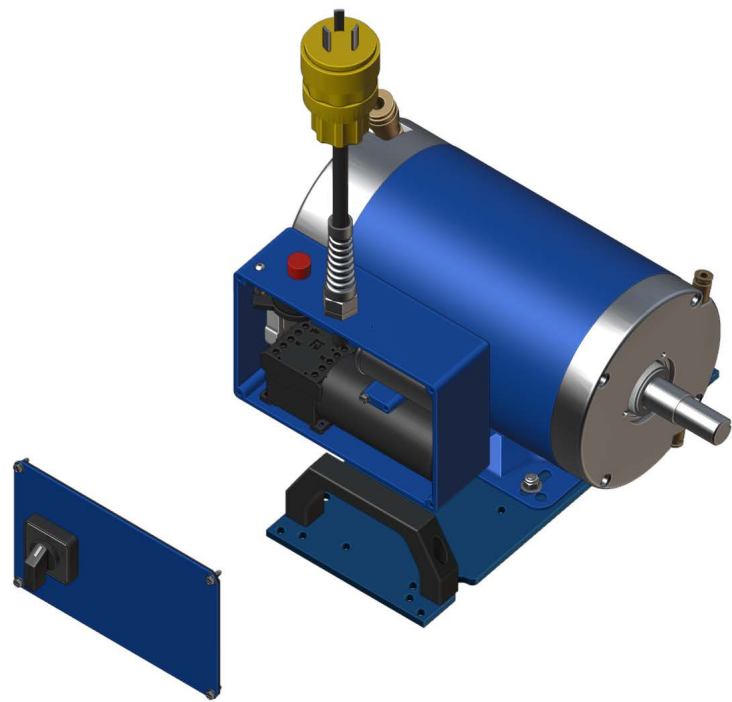
STEP 9
on the other side of the mo-
tor, unscrew the four thread-
ed rods holding the motor
together

STEP 8
Remove the rear guard
from the motor



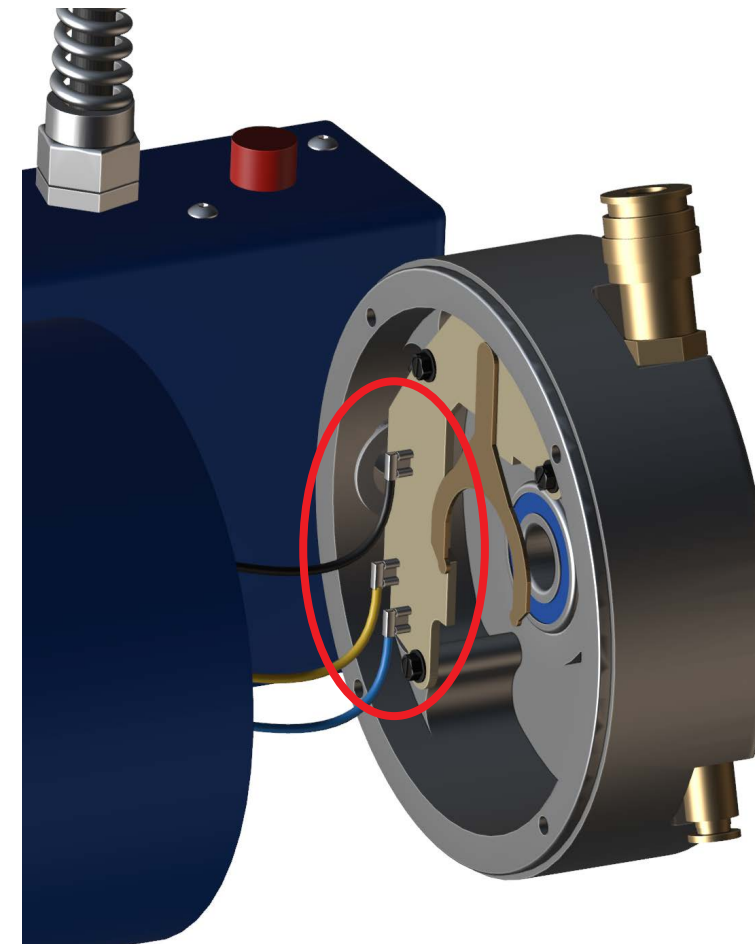
STEP 10
Remove the long thread
screws holding the motor
caps in place





STEP 11

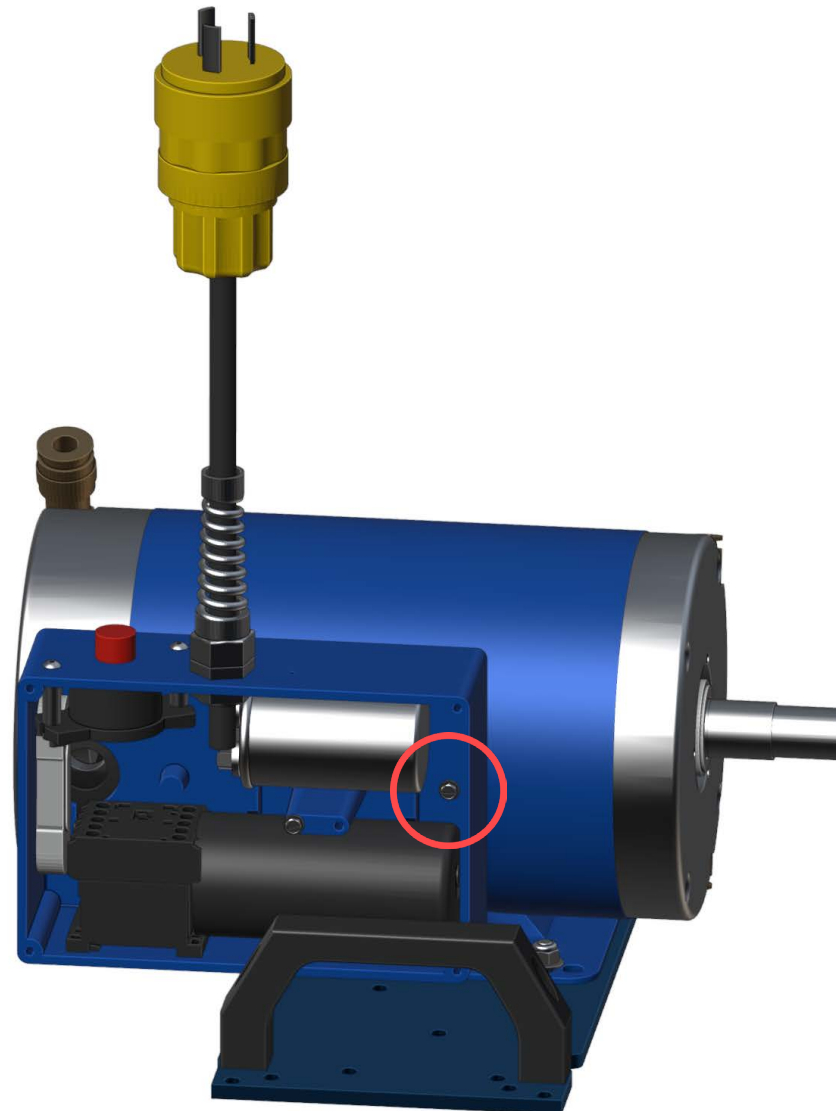
remove the electrical box cover by unscrewing the 4 corner screws



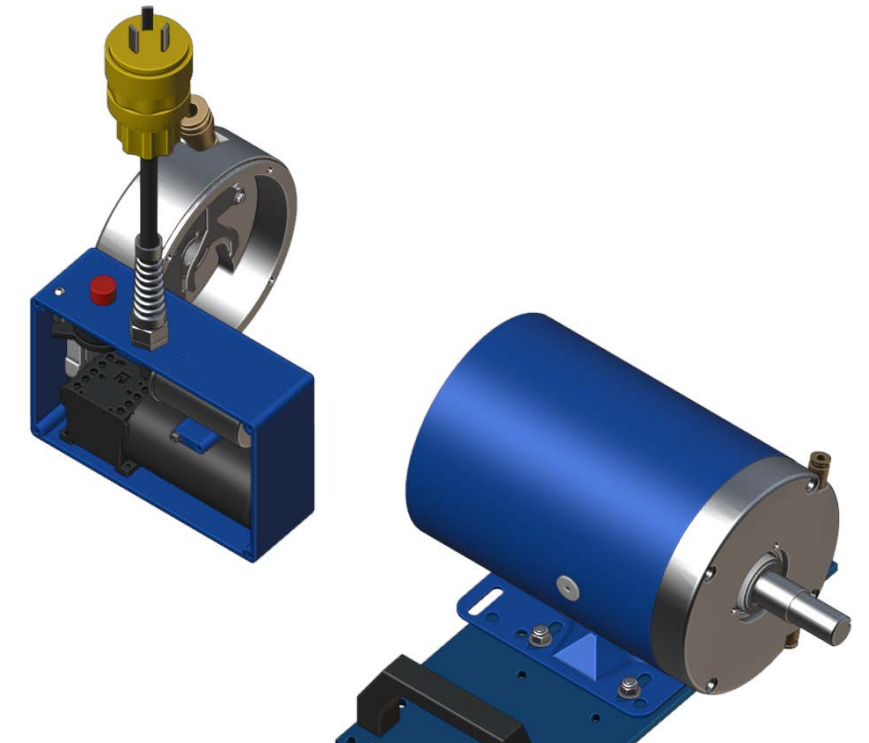
STEP 14

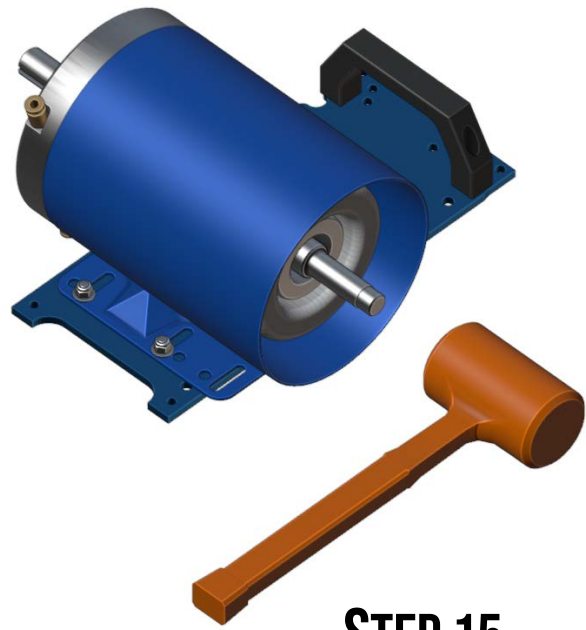
if you cannot remove the bearing from the rear cap, then disconnect the black, yellow, and blue wires by unclipping their crimps from the switch board.

STEP 12
remove the screw holding the electrical box into the motor

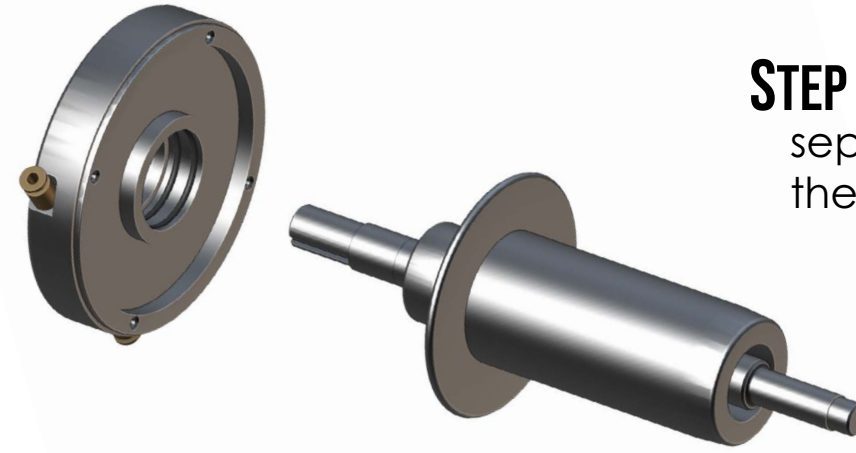
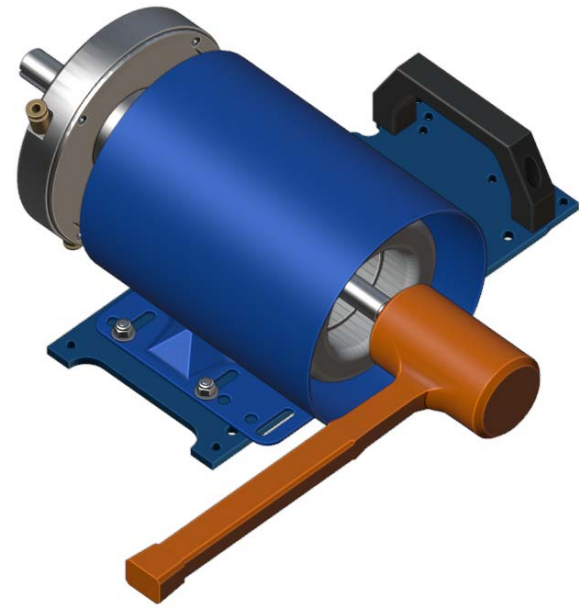


STEP 15
remove the back cap from the motor, and use leverage to pull the bearing out.



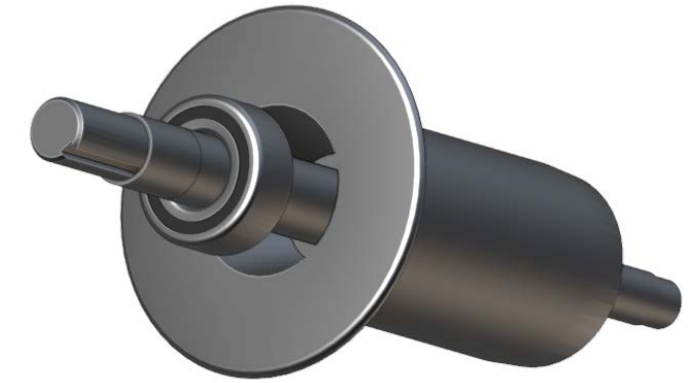


STEP 15
use a dead blow hammer to
release the front cap from the
motor.

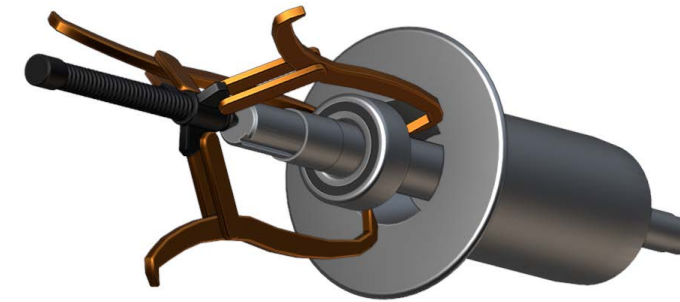
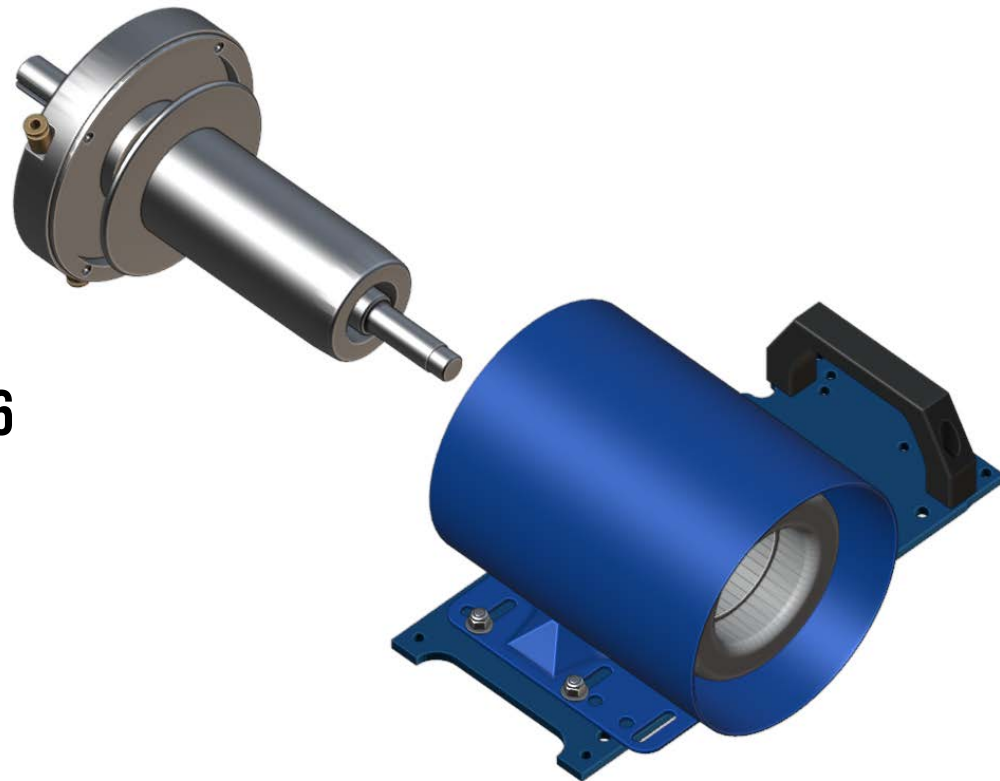


STEP 17
separate the front cap from
the motor spindle.

STEP 18
the bearing will most
likely remain on the
spindle shaft.

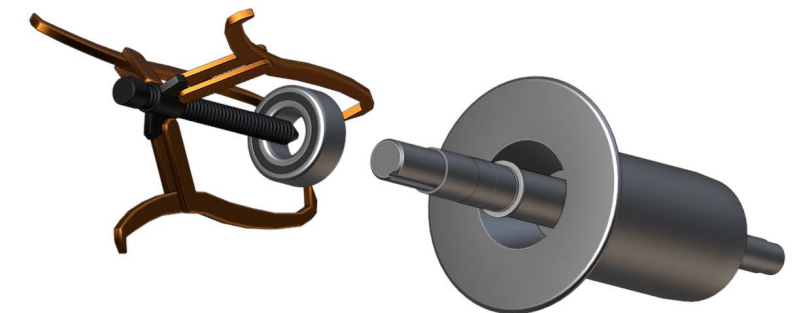


STEP 16
remove the spindle
and cap from the
motor housing



STEP 19
connect a bearing removal
tool to the bearing and the
motor shaft.

STEP 20
tighten the removal tool
main thread until bear-
ing is removed from the
motor shaft.





STEP 21

use a press to install the new bearing on the motor shaft.

STEP 22 & BACK

to put the motor back together, use steps in reverse.

FINISHED