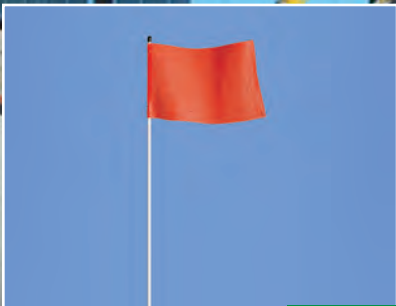


# CHECKERS®

INDUSTRIAL SAFETY PRODUCTS



INDUSTRIAL  
SAFETY  
PRODUCTS FOR

## OIL & GAS APPLICATIONS

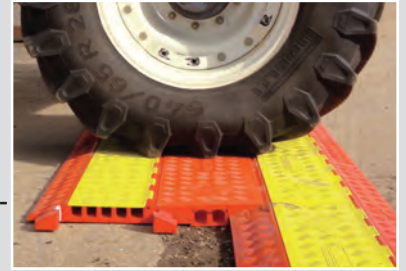


Through our commitment to innovation and excellence, Checkers continually serves as one of the oil and gas industry's leading providers of quality safety products.

## CABLE & HOSE PROTECTION SYSTEMS

Checkers manufactures the most extensive line of high performance cable protection products in the world. These durable systems protect valuable electrical cables, cords, and hose lines from damage while providing a method of safe passage for pedestrian traffic, vehicles, and heavy duty equipment.

We offer lidded models, drop-over models, open top models, and low profile models constructed from all-weather polyurethane. We also offer various accessories for many of our models. With the wide variety of styles available, we are able to provide a cable protection solution for nearly any application.



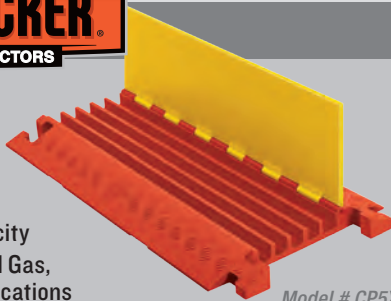
### LINEBACKER®

CABLE PROTECTORS

#### HEAVY DUTY

with T-Connectors

- Checkers' most robust cable protection option
- High load-bearing capacity
- Ideal for: Mining, Oil and Gas, Military, Industrial Applications



Model # CP5X125



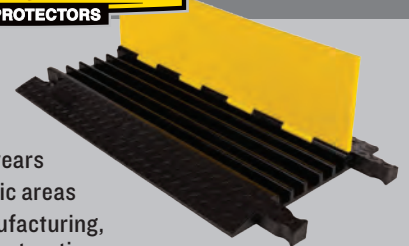
### YELLOW JACKET®

CABLE PROTECTORS

#### HEAVY DUTY

with Dog Bone Connectors

- The "original" cable protector for over 30 years
- For heavy volume traffic areas
- Ideal for: Mining, Manufacturing, Material Handling, Construction



Model # YJ5-125



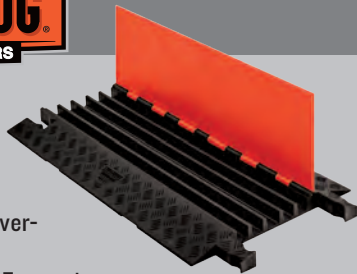
### GUARD DOG®

CABLE PROTECTORS

#### GENERAL PURPOSE

with Dog Bone Connectors

- Checkers' most versatile option
- For pedestrian traffic and over-the-road vehicles
- Ideal for: Utility, Industrial, Entertainment



Model # GD5X125



### DIAMONDBACK®

HOSE BRIDGES

#### HEAVY DUTY

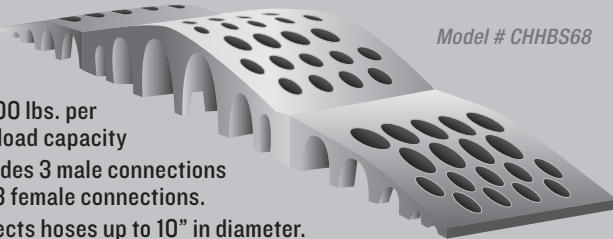
for Hoses up to 6.5 in.

- Reduces hose maintenance costs
- Ideal for: Mining, Refineries, Industrial, Firefighting Vehicles



Model # UHB4045

## SUPER HOSE BRIDGE



Model # CHHBS68

- 14,000 lbs. per axle load capacity
- Includes 3 male connections and 3 female connections.
- Protects hoses up to 10" in diameter.



## WHY USE CHECKERS' CABLE PROTECTORS?

- Largest manufacturer of cable protectors in the world, including the most popular brands in the industry
- Modular interlocking designs extend to any desired width or length with simple setup, disassembly, and storage
- Polyurethane construction is lighter and more durable than rubber imitations in extreme weather conditions
- Patented design & connector systems are the best in the industry
- 5, 4, 3, 2, or 1 channel options available
- We offer extensive accessories, such as ADA/DDA compliant access ramps, protector bridges, 45° & 90° turns, and end caps
- Constructed of durable polyurethane - resistant to extreme weather conditions, tears, abrasions, oils, and solvents
- Our non-conductive material insulates cords and cables from human contact
- Satisfies all state and federal regulations
- Universal safety colors to alert all types of traffic
- Safety warning symbols molded into the product



# INDUSTRIAL WHEEL CHOCKS

Checkers manufactures the world's most extensive line of wheel chocks. Monster® Wheel Chocks comply with the safety requirements for a variety of industries and ensure a safe working environment while your vehicles are at rest. Made with durable urethane, our wheel chocks provide a safe chocking solution for any type of vehicle.



## HEAVY DUTY



**MONSTER**  
WHEEL CHOCKS

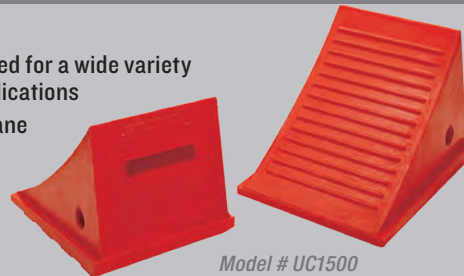
## GENERAL PURPOSE

Model # MC3011



- MC Series - used and trusted globally
- Durable, lightweight, and easy-to-use design
- Ideal for: Heavy Equipment, Haul Trucks, Cranes, Large Military Tactical Vehicles

- UC Series - designed for a wide variety of commercial applications
- Lightweight urethane construction
- Ideal for Over-the-Road Trucks, Trailers, Pickups, Utility Vehicles



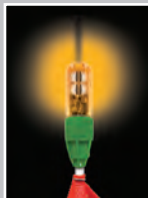
# WARNING WHIPS

Checkers manufactures an extensive line of Warning Whips. Available in 3, 5, 6, 8, 10 or 12 ft lengths, these whips greatly increase visibility of vehicles on work sites and are manufactured to handle the most extreme working conditions.

Checkers' Warning Whips are available in lighted and non-lighted models and come with a durable nylon mesh flag. We also offer a variety of base mounts, mounting options, and lighting styles and colors.



- The preferred whips all around the world - hundreds of options to choose from
- Base mounts available include Standard Threaded Hex Base, Quick Disconnect Base, and Lock Pin Base
- Standard Pole, Split Pole, and Telescoping Pole options
- Ideal for: Construction Sites, Mines, Oil and Gas, Other Industrial Applications



# OUTRIGGER PADS

Checkers is excited to offer our new AlturnaMATS® Safety Tech Outrigger Pads! These are the only engineered, quantifiable, and rated outrigger pads available today.

**SafetyTech**  
OUTRIGGER PADS

## SAFETY TECH OUTRIGGER PADS

- Safety textured
- No splinters
- No warping
- No delamination
- Many standard sizes
- Lightweight & heavy duty
- Safety orange TuffGrip handles
- Recovery memory after bending
- Engineered to bend but not break!



# GROUND PROTECTION

Whether you need to protect sensitive turf, or provide extra traction, our ground protection solutions have you covered. Our mats can be connected together to form roadways or walkways, and with a wide variety of traction patterns, weights, and designs, they are applicable to nearly every industry.

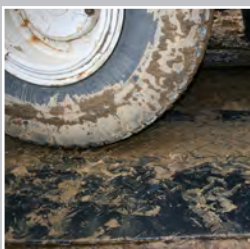


## AlturnaMATS®

### ALTURNAMAT

ALTURNAMATS® are made of 1/2 in. thick polyethylene so they are virtually indestructible. They withstand vehicles weighing up to 120 tons, bend but do not break and feature a Limited Lifetime Warranty.

Model # AM48



- Bold cleat design for great traction
- Mats can be locked together with Turn-A-Links forming a continuous roadway
- Leave turf smooth, even in soft conditions

### VERSAMAT

VERSAMATS® literally are the most versatile ground protection mats in the industry. The flat, slip-resistant tread permits pedestrians to walk safely on the mats, yet they are as rugged as the original ALTURNAMATS®.

Model # VM48

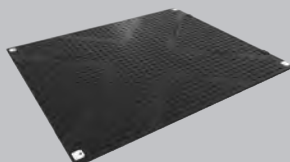


- Flat tread design
- Safe to walk on
- Virtually eliminates ground restoration costs from vehicle damage
- Easy to handle

## zigma® Ground Solutions

### TUFFTRAK

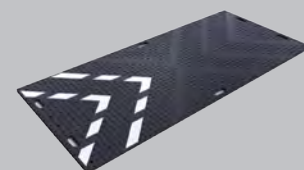
TUFFTRAK® is the ultimate heavy duty road mat for temporary roadways and work areas, able to support heavy plant, machinery, and multiple vehicles with a weight capacity of 147 tons, dependent on ground conditions.



- Lighter in weight than other heavy duty road mats with comparable performance
- Tough and durable for work areas and temporary roads
- Ideal for use with heavy plant, vehicles and site personnel

### LIBERTYMAT

Supporting loads up to 78 tons, the LIBERTYMAT® is the ultimate heavy duty man-handleable mat for temporary roadways and work areas.



- Fast and easy to install
- Unique Chevron Traction® surface
- Low transportation and handling costs
- Connection options for different ground conditions and equipment