



OPERATIONS - PARTS MANUAL



ARP340H ARP700H ARP870D
Vibratory Reversible Compactor

allen
ENGINEERING
CORPORATION
819 South 5th Street
Paragould, AR 72450

Reversible Compactor

OPERATIONS - PARTS

MANUAL

This manual covers the products listed below:

<u>Part No.</u>	<u>Description</u>
061650	ARP340H Vibratory Reversible Compactor (650 m ² /h) GX160
061660	ARP700H Vibratory Reversible Compactor (792 m ² /h) GX270
061670	ARP870D Vibratory Reversible Compactor (912 m ² /h) 1B40

Copyright © 2016 Allen Engineering Corporation
All rights reserved

All information, specifications, and illustrations in this manual are subject to change without notice and are based on the latest information at the time of publication. No part of this manual may be reproduced or transmitted in any form or by any means, electronic or mechanical, for any purpose, without the express written permission of Allen Engineering Corporation (AEC). AEC assumes no responsibility or liability for any errors or inaccuracies that may appear in this manual.

Allen Products are covered under one or more of the following patent numbers:

U.S. Design Patents: 344,736; 400,542; 400,544; 402,998; 402,999; 403,332; 404,041; 404,042; 410,931; 413,127; 416,564; 465,897; 466,909; 474,203.

U.S. Utility Patents: 5,108,220; 5,238,323; 5,328,295; 5,352,063; 5,405,216; 5,476,342; 5,480,257; 5,480,258; 5,533,831; 5,562,361; 5,567,075; 5,613,801; 5,658,089; 5,685,667; 5,803,658; 5,816,739; 5,816,740; 5,890,833; 5,934,823; 5,967,696; 5,988,938; 5,988,939; 6,019,433; 6,019,545; 6,048,130; 6,053,660; 6,089,786; 6,106,193; 6,857,815; 5,288,166; 6,582,153 B1, 7,108,449; 7,114,876; 7,316,523; 7,690,864 B2

Canadian Patents: 2,039,893.

First Issue: October 2014
Amended: February 2016

Printed in U.S.A.

Limited Warranty

Allen Engineering Corporation ("Allen") warrants its products to be free of defects in material or workmanship for:

TWO YEARS FROM END USER'S DATE OF PURCHASE

Warranty period begins on the date of purchase by the End User of the product. All warranty is based on the following limited warranty terms and conditions, including the disclaimer of implied warranties and consequential damages.

1. Allen's obligation and liability under this warranty is limited to repairing or replacing parts if, after Allen's inspection, there is determined to be a defect in material or workmanship. Allen reserves the choice to repair or replace.
2. If Allen chooses to replace the part, it will be at no cost to the customer and will be made available to the Allen Distributor, Dealer, or Rental Center from whom the End User purchased the product.
3. Replacement or repair parts, installed in the product, are warranted only for the remainder of warranty period of the product as though they were the original parts.
4. Allen does not warranty engines or batteries. Engine warranty claims should be made directly to an authorized factory service center for the particular engine manufacturer. Batteries are not warranted due to unknown treatment during transport, etc, and any battery claims should be directed to the battery manufacturer.
5. Allen's warranty does not cover the normal maintenance of products or its components (such as engine tuneups and oil & filter changes). The warranty also does not cover normal wear and tear items (such as belts and consumables).
6. Allen's warranty will be void if it is determined that the defect resulted from operator abuse, failure to perform normal maintenance on the product, modification to product, alterations or repairs made to the product without the written approval of Allen. Allen specifically excludes from warranty any damage to any trowels resulting from an impact to the rotors.
7. Impact damage to gear boxes is not covered under the Allen warranty and is deemed customer abuse.
8. Allen will pay shop labor on warranty items at the Allen Shop Labor Rate in existence on the date of the warranty claim. An Allen labor chart will determine the time allowed to complete a repair and will govern the shop labor hours that will be allowed.
9. Allen will pay freight on warranty replacement parts at worldwide standard ground rates. No warranty replacement parts will be shipped air freight at the expense of Allen. Allen only pays outbound freight charges when sending warranty replacement parts to the customer via ground service. Allen does not pay any inbound freight. However, if Allen determines this to be a warranted item, only then will Allen reimburse the customer for inbound freight at standard ground rates.
10. ALLEN ENGINEERING CORPORATION'S WARRANTY POLICY WILL NOT COVER THE FOLLOWING: TAXES; SHOP SUPPLIES; ENVIRONMENTAL SURCHARGES; AIR FREIGHT; TRAVEL TIME; LOSS OF TIME; INCONVENIENCE; LOSS OF RENTAL REVENUE; RENTAL COSTS OF EQUIPMENT USED TO REPLACE THE PRODUCT BEING REPAIRED; LOSS OF USE OF THE PRODUCT; COMMERCIAL LOSS; OR ANY OTHER CHARGES WHATSOEVER OR ANY LIABILITIES FOR DIRECT, INCIDENTAL, OR CONSEQUENTIAL DAMAGE OR DELAY.
11. ALLEN ENGINEERING CORPORATION MAKES NO OTHER WARRANTY, EXPRESSED OR IMPLIED. THIS LIMITED WARRANTY IS IN LIEU OF THE WARRANTY OF MERCHANTABILITY AND FITNESS. THERE ARE NO OTHER WARRANTIES THAT EXTEND BEYOND THE DESCRIPTION ON THIS DOCUMENT.
12. No Allen employee or representative is authorized to change this warranty in any way or grant any other warranty unless such change is made in writing and signed by an officer of Allen Engineering Corporation.

Table of Contents

Title	Page
Limited Warranty	4
Table of Contents	5
Information Contained In This Manual	7
Dealer Information	8
Ordering Parts	9
Section 1 - Safety	
Safety Information	10
Section 2 - Operations	
Machine Description	12
Pre-Start Checks	13
Start/Stop Procedure	13
Operation	14
Maximum Admissible Inclination	14
Section 3 - Service	
Service and Maintenance	15
Air Cleaner	16
Engine Oil	17
Carburetor Adjustment	18
Hydraulic system	19
Troubleshooting	20
Technical Data	21

Table of Contents - Continued

Title	Page
Section 4 - Parts	
ARP340H Gearbox Assembly	22
ARP340H Base Plate Assembly	24
ARP340H Engine Base Assembly	26
ARP340H Handlebar Assembly	28
ARP340H Safety Cover Assembly	30
ARP700H Gearbox Assembly	32
ARP700H Base Plate Assembly	34
ARP700H Engine Base Assembly	36
ARP700H Handlebar Assembly	38
ARP700H Safety Cover Assembly	40
ARP870D Assembly	42
ARP870D Gearbox Assembly	44
ARP870D Base Plate Assembly	46
ARP870D Rear Cover Assembly	48
ARP870D Battery Assembly	50
ARP870D Safety Cover Assembly	52
ARP870D Engine Base Assembly	54
ARP870D Handlebar Assembly	56

Information Contained in this Manual



This manual provides information and procedures to safely operate and maintain the Allen Machine.

For your own safety and protection from personal injury, carefully read, understand, and observe the safety instructions described in this manual. Keep this manual or a copy of it with the machine at all times.

Always operate this machine in accordance with the instructions described in this manual. A well maintained piece of equipment will provide many years of trouble free operation.

This manual is divided into the following sections:

**SECTION 1
SAFETY**

**SECTION 2
OPERATIONS**

**SECTION 3
SERVICE**

**SECTION 4
PARTS**

Complete any warranty requirements as specified by the engine manufacturer in their instructions found inside the manual box located on the operator's control panel.

Your engine is not manufactured by Allen Engineering Corporation, Inc, and therefore is not covered under Allen Engineering Corporation, Inc warranty.

Your engine manufacturer should be contacted if you wish to purchase a parts manual or a repair manual for your engine.

Refer to enclosed owners engine manual for complete O&M instructions. See your battery manufacturer for battery warranty.

Dealer Information

Your Dealer has Allen Engineering Corporation trained mechanics and original Allen replacement parts. Always contact the Allen Dealer who sold you this machine for Allen Certified repairs and replacement parts.

Place Allen Dealer information below for future reference.

Dealer Name:	_____
Phone #:	(____) - ____ - _____
Address:	_____
City:	_____
State:	_____
Zip:	_____
Salesman:	_____
Mobile Phone	_____
Additional Comments:	_____



Ordering Parts

Section 4 contains illustrated parts lists for help in ordering replacement parts for your machine. Follow the instructions below when ordering parts to insure prompt and accurate delivery:

1. All orders for service parts - include the serial number for the machine. Shipment will be delayed if this information is not available.
2. Include correct description and part number from the "PARTS" section of this manual.
3. Specify exact shipping instructions, including the preferred routing and complete destination address.
4. DO NOT return parts to AEC without receiving written authorization from AEC. All authorized returns must be shipped pre-paid.
5. When placing an order, please contact the AEC dealer nearest you.

NOTE

All information, specifications, and illustrations in this manual are subject to change without notice and are based on the latest information at the time of publication.

VISIT US!!!



www.alleneng.com

LIKE US!!!



www.facebook.com/AllenEngineering

FOLLOW US!!!



[@alleneng](https://twitter.com/alleneng)

WATCH US!!!



www.youtube.com/AllenMachinery

SECTION 1 SAFETY

Safety Information



This CAUTION sign indicates a potential hazard, which if ignored could result in injuries to the operator and/or those close by, as well as damaging the machine.



This WARNING sign indicates a potential hazard, which if ignored could result in the DEATH of the operator and/or those close by.

For your own personal protection and for the safety of those around you, please read and ensure you fully understand the following safety information. It is the responsibility of the operator to ensure that he/she fully understands how to operate this equipment safely. If you are unsure about the safe and correct use of the Reversible Plate Compactor, consult your supervisor or ALLEN.



Improper maintenance can be hazardous. Read and understand this section before you perform any maintenance, service or repairs.

General Safety

- The owner of this machine must observe, and also train the user of the machine to observe, the effective labour protection laws in the country of application.
- This machine is to be used for its intended application only.
- This machine must only be operated by well-trained personnel.
- Personal Protective Equipment (PPE) must be worn by the operator whenever the equipment is being used.
- Cordon off the work area and keep members of the public and unauthorised personnel at a safe distance.
- If the surface to be compacted is on a slope, great care must be taken when controlling the machine's direction of travel. Always work up and down a slope, not across.
- Make sure you know how to safely switch this machine OFF before you switch it ON in case you run into any difficulties.
- Always switch OFF the engine before servicing it.
- This machine must be operated on the ground where stability is guaranteed. When working near the rim of excavated trenches, use the machine properly so that the machine may not collapse or fall down.
- During use, the engine becomes very hot. Always allow the engine to cool down before touching it.
- Never leave the engine running and unattended.
- Never remove or tamper with any fitted guards; they are there for your own protection. If they are damaged or missing, DO NOT USE THE MACHINE until the guard has been replaced or repaired.
- Always switch OFF the engine before transporting it, moving it around site or servicing it.
- Do not operate the machine when you are ill, feeling tired or when under the influence of alcohol or drugs.

- This machine is designed to eliminate the possible risks arising from the use of it. However, risks DO reside, and these residual risks are not clearly recognisable and may cause personal injury or property damage, and possibly death. If such unpredictable and unrecognisable risks become apparent, the machine must be stopped immediately, and operator or his supervisor must take appropriate measure to eliminate such risks. It is sometimes necessary that the manufacturer must be informed of such event for future counter measuring.

Fuel Safety



Fuel is flammable. It may cause injury and property damage. Shut down the engine, extinguish all open flames and do not smoke while filling the fuel tank. Always wipe up any spilled fuel.

- Before re-fuelling, switch off the engine and allow it to cool.
- When re-fuelling, use a proper funnel, and avoid spilling over the engine.
- When re-fuelling, DO NOT smoke or allow naked flames in the area.
- Spilt fuel must be made safe immediately by using sand. If fuel is spilt on your clothes, change them.
- Store fuel in an approved, purpose made container away from heat and sources of ignition.

Health & Safety

Vibration

Some vibration from the compacting operation is transmitted through the handle to the operator's hands. Ensure operator rotation and do not exceed the maximum recommended usage times.

Dust

The compaction process can produce dust, which may be hazardous to your health. Always wear a mask that is suited to the type of dust being produced.

Fuel

Do not ingest fuel or inhale fuel vapors and avoid contact with your skin. Wash fuel splashes immediately. If you get fuel in your eyes, irrigate with copious amounts of water and seek medical attention as soon as possible.



The exhaust fumes produced by this machine are highly toxic and can kill!

Exhaust Fumes

Do not operate the Vibratory Plate Compactor indoors or in confined spaces. Make sure the work area is adequately ventilated.

SECTION 2 OPERATIONS

Operations

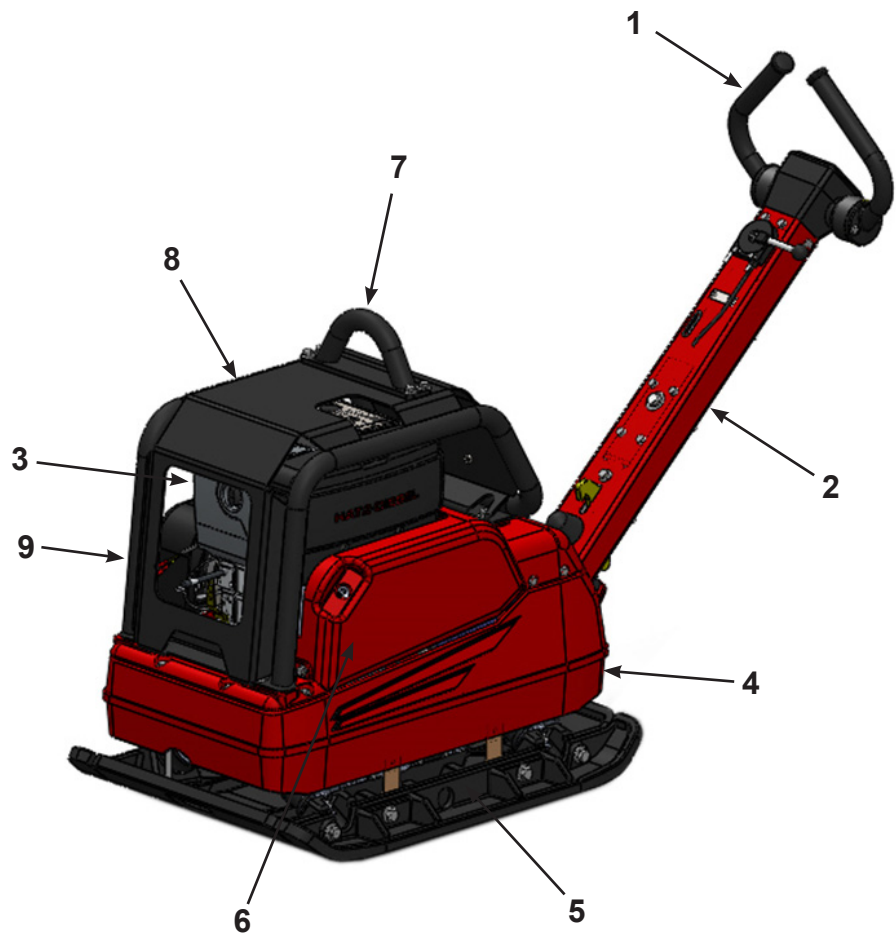
Machine Description

Intended Use

This Reversible Compactor is designed for compacting loose, granular soils, gravel, paving stones and asphalt. It is intended to be used in confined areas and areas next to structures such as walls, curbs, and foundations. Reversible Compactors with water tanks can be used for compacting asphalt.

This Reversible Compactor is not recommended for compacting cohesive soils with heavy clay content. For cohesive soil, use a Vibratory Rammer.

1. Control Handle
2. Handle bar
3. Engine
4. Engine Base
5. Base plate
6. Side Covers
7. Lifting Eye
8. Safety Cover
9. Safety Bar



Pre-start Checks

The following pre-start checks must be performed before the start of each work session or after every four hours of use, whichever is first. Please refer to the Service and Maintenance section for detailed guidance. If any fault is discovered, the Plate Compactor must not be used until the fault is rectified.

1. Thoroughly inspect the machine for signs of damage, Make sure all guards are in place and secured.
2. Check hoses, filler openings, drain plugs and other areas for signs of leakage. Fix any leaks before operating.
3. Check the engine oil level and top up as necessary. Use proper engine oil with the proper viscosity (SAE 10W-30 is recommended).
4. Check the engine fuel level and top us as necessary. Use clean fuel. The use of contaminated fuel may damage the fuel system.
5. Check the air filter is clean. Excessive dirt/dust accumulation within the filter element will cause erratic engine operation. Clean the air filter element when it is contaminated (refer to the Service and Maintenance section).
6. Check for fuel and oil leaks.

Start/Stop Procedure

Before starting the engine, make sure that the Safety Switch is in the ON position and the Throttle Lever is set to the idle position.

1. Take the Plate Compactor to where it is required. Use suitable lifting equipment to position the Plate Compactor where it is necessary. Make sure the lifting equipment has a WLL (Working Load Limit) suitable for the Plate Compactor weight. Attach suitable slings or chains only to the lifting point.
2. Never leave the engine running during transporting, even if it is for a short period of time.
3. Having carried out the checks listed in the 'pre-start' section, you may start the engine. ALLEN Plate Compactors are fitted with a centrifugal clutch which allows the engine to run at idle speed without driving the Plate Compactor. Centrifugal clutch will be engaged as the speed of engine is increased. For correct operation, the engine speed should be set to maximum.

Before Starting Gasoline Engine

4. Check the oil in the engine crankcase. Be sure to maintain the proper level per the engine manufacturer specifications. If the oil is dirty and in need of changing, follow the Engine User Manual instructions.
5. Check the fuel supply. Refer to Engine User Manual.

SECTION 2 OPERATIONS

Operations (cont'd)

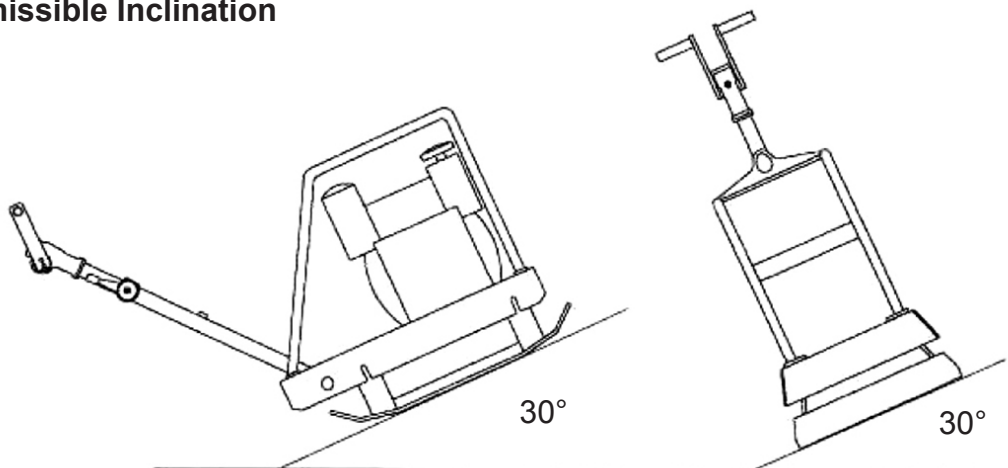
Operation

1. Run the engine at full throttle and allow the Plate Compactor to pull itself along at its normal speed.
2. When operating on an incline it may be necessary to assist the Plate Compactor by pushing it forward slightly.
3. When operating downhill hold the Plate Compactor back slightly, if it begins to pick up speed.
4. Depending on the material being compacted, 3 or 4 passes are recommended to achieve the best compaction.
5. While a certain amount of moisture in the soil is necessary, excessive moisture may cause soil particles to stick together and prevent good compaction.
6. If soil is extremely wet, allow it to dry somewhat before compacting.
7. If soil is so dry as to create dust clouds while operating Plate Compactor, some moisture should be added to the ground material to improve compaction. This will also reduce service to the air filter.



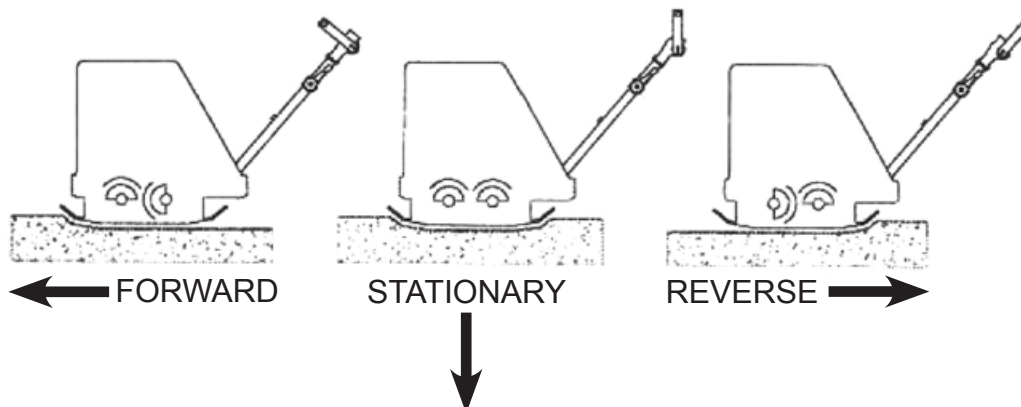
Do not operate the plate on concrete or on extremely hard, dry, compacted surfaces. The plate will jump rather than vibrate and could damage both the plate and the engine.

Maximum Admissible Inclination



Regarding Speed and Direction

The plate compactor has a hydraulic system which enables a gradual increase in speed. The direction of travel is determined by the control on the guide pole.



Service and Maintenance

The ALLEN Reversible Compactors are designed to give many years of trouble free operation. It is, however, important that the simple regular maintenance listed in this section is carried out. It is recommended that an approved ALLEN dealer carry out all major maintenance and repairs. Always use genuine ALLEN replacement parts, the use of spurious parts may void your warranty. Before any maintenance is carried out on the machine, switch off the engine and disconnect the HT lead from the spark plug. Always set the machine on level ground to ensure any fluid levels will be correctly read. Only use recommended oils.

Parts	Maintenance	Interval
Air filter	Check filter, clean or replace if necessary. Check oil level (only for models with bathed in oil filter.)	Daily.
Fuel tank	Check tank lid fortight fit, replace if necessary.	
Engine	Check oil level, top up if necessary.	
Exciter	Check for tightness.	
Engine	First oil change.	After 20 hours.
V-belt	Check V-belt tension.	Monthly.
Fuel tank	Check fuel filter, replace if necessary.	After 100 hours.
Engine	Further oil changes.	
Exciter	Check oil level – fill up, if need be.	After 150 hours.
Exciter	Oil change.	After 250 hours.

SECTION 3 SERVICE

Service (cont'd)

Air Cleaner

The engine is equipped with a dual element air cleaner. Air cleaner must be serviced regularly to prevent carburetor failure.



Never run the engine without the air cleaner. Severe engine damage will occur.

To Service (Figure 1):

- i. Remove air cleaner cover (a). Remove both elements and inspect them for holes or tears. Replace damaged elements.
- ii. Wash foam element (b) in solution of mild detergent and warm water. Rinse thoroughly in clean water. Allow element to dry thoroughly. Soak element in clean engine oil and squeeze out excess oil.
- iii. Tap paper element (c) lightly to remove excess dirt. Replace paper element if it appears heavily soiled.

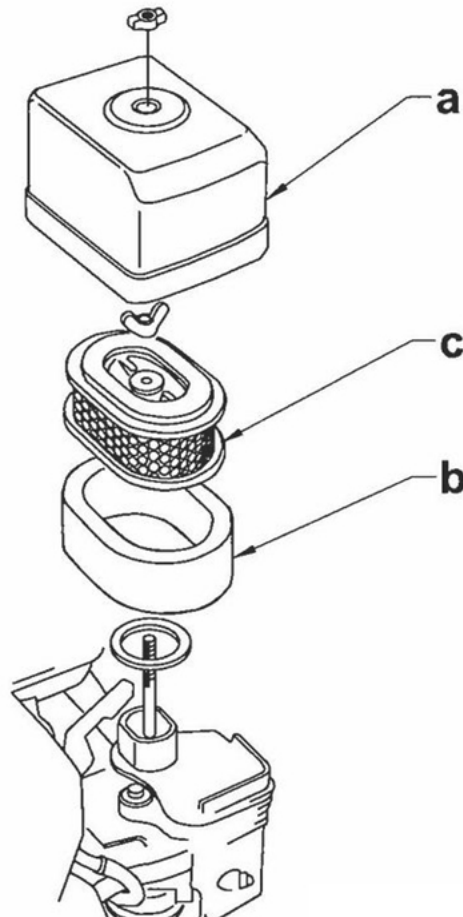


Figure 1

Engine Oil (Figure 2)

1. Drain oil while engine is still warm.
2. Remove the oil fill plug (a) and drain plug (b) to drain oil.
Note: In the interests of environmental protection, place a plastic sheet and a container under the machine to collect any liquid which drains off. Dispose of this liquid in accordance with environmental protection legislation.
3. Install drain plug.
4. Fill the engine crankcase with recommended oil up to the level of the plug opening (c). See engine user manual for oil type and quantity.
5. Refit the oil filler plug.

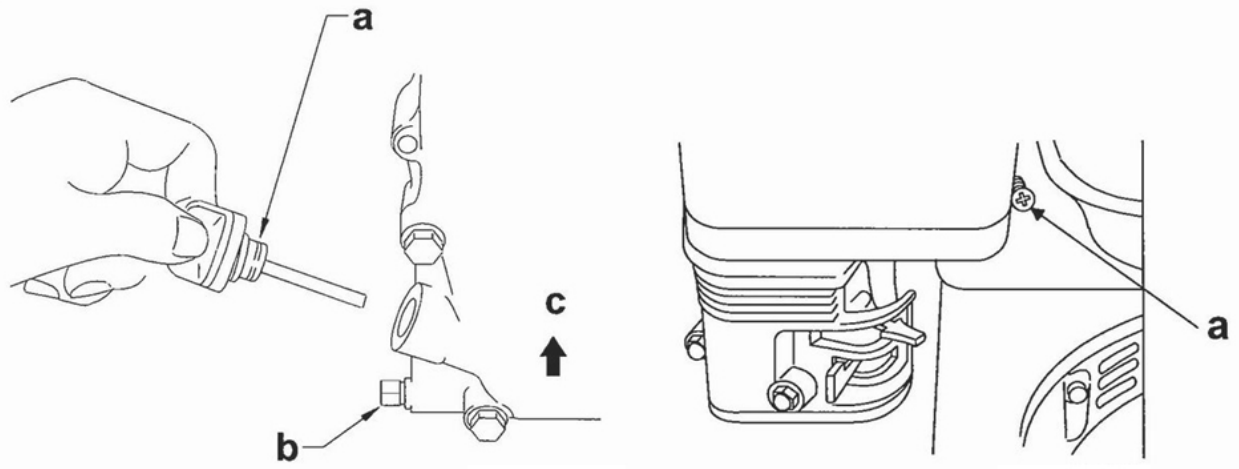


Figure 2

SECTION 3 SERVICE

Service (cont'd)

Carburetor Adjustment (Figure 3)

1. Start the engine and allow it to warm up to operating temperature.
2. Set the pilot screw (a) 2 turns out. See note.
3. With the engine idling, turn the pilot screw (a) in or out to the setting that produces the highest rpm.
4. After the pilot screw is adjusted, turn the throttle stop screw (b) to obtain the standard idle speed.

Note: On some engines the pilot screw is fitted with a limiter cap (c) to prevent excessive enrichment of the air-fuel mixture in order to comply with emissions regulations. The mixture is set at the factory and no adjustments should be necessary. Do not attempt to remove the limiter cap. The limiter cap cannot be removed without breaking pilot screw.

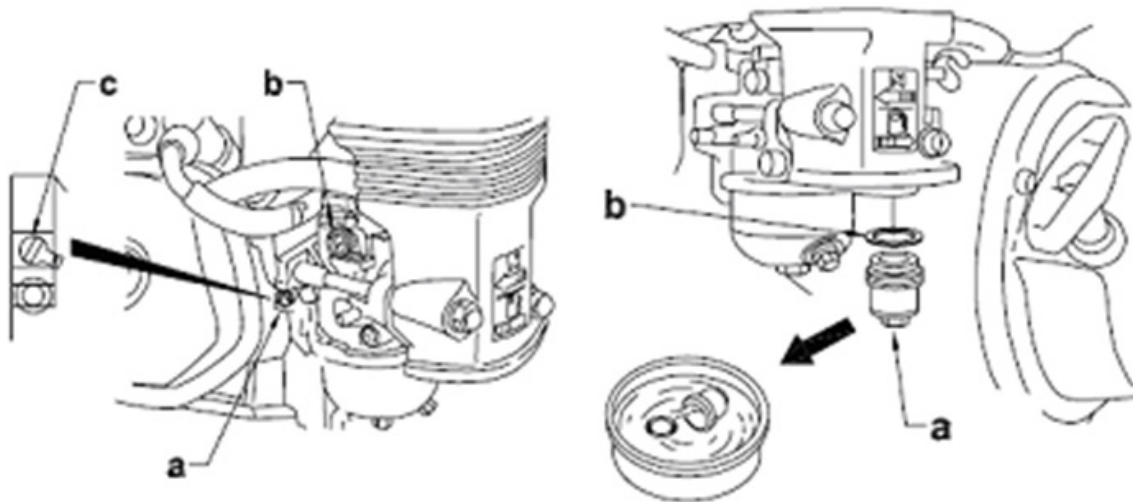


Figure 3

Hydraulic system

1. Move center pole into vertical position.
2. Open filler bore.
3. Check oil level, top up if necessary.
4. Top up with hydraulic oil T68.
5. Close filler bore.

To check oil level:

1. Place plate on a flat level surface.
2. Remove the Oil Filler Plug.

Cleaning the Plate Compactor

Clean plate after use to remove dirt, stones, and mud caught under the engine console. If plate is being used in a dusty area, check engine cylinder cooling fins for heavy dirt accumulation. Keep engine cylinder fins clean to prevent engine from overheating. You may use an air gun to blow away excessive dirt

Transportation and Storage

- For long-term storage, empty the fuel in the carburetor by running the engine with the fuel tap closed.
- The chemical composition of the fuel will deteriorate after prolonged storage. When the machine needs to be stored for a long time, remove all the fuel from the fuel tank and the water from the water tank. Also remove the fuel from the float chamber of the carburetor by draining the fuel out from the drain plug.
- Wash away excessive dirt accumulated on the Reversible Compactor. Clean the engine mounting plate. Cover the machine and store it in a dry place.
- Where applicable, always use the lifting hook for hoisting purposes. Use proper hoisting equipment and techniques.
- Be certain the area surrounding the machine is clear of personnel before hoisting.

SECTION 3 SERVICE

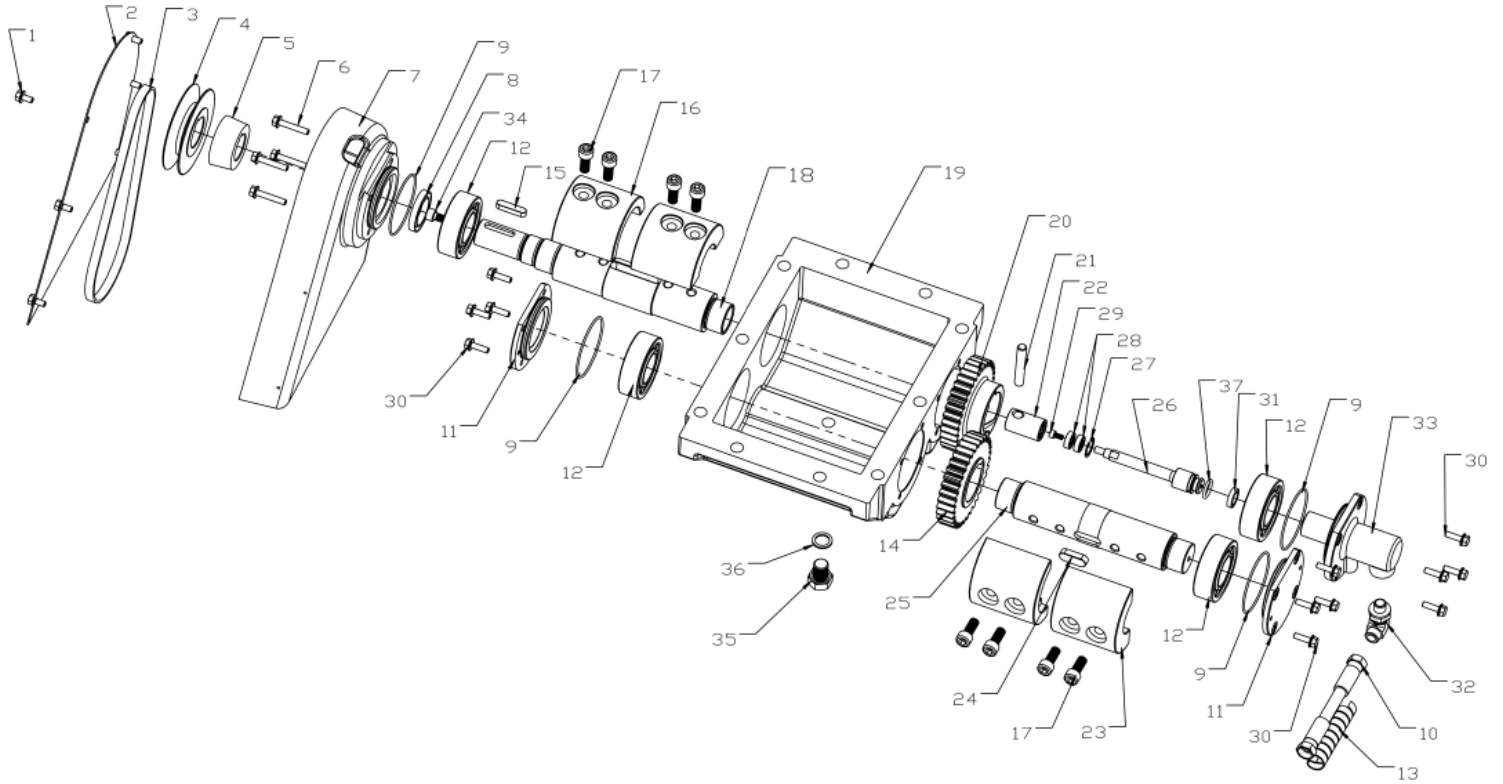
Troubleshooting

PROBLEMS	POSSIBLE CAUSES	COUNTERMEASURES
The machine does not go forward or goes forward slowly.	Insufficient oil in the hydraulic pump placed on the handle.	Place the handle in vertical position. Add hydraulic oil until the level indicated in the pump. Take off air from the circuit by lifting up and letting down the control levers sometimes.
The machine goes only backward.	The joint of the pump is broken or is worn out.	Replace the joint.
The machine does not go backward or goes backward slowly.	There is too much oil in the hydraulic pump placed on the control handle.	Take off oil and restore the level indicated in the pump.
	There is some air under pressure in the pump.	Open the pump plug in order to let air go out.
The oil level in the pump is decreasing slowly.	Loss of oil in the hydraulic conduit.	Replace the broken part.
	The cylinder joint of the exciter is broken or worn out so the oil goes in the exciter.	Replace the joint and restore the oil level in the exciter.
The engine works regularly at full capacity but the machine does not vibrate.	The belt is broken.	Replace the belt.
	The belt is loosening because it is worn out.	
	Centrifugal clutch is broken.	Replace the centrifugal clutch.
The engine works and the exciter vibrates but the machine keeps still.	Mechanical failure in the exciter system.	Open the exciter and remove the failure.
		Address to an Assistance Service Center.
The engines works with difficulty, smoke comes from the clutch and the exciter strains.	The mechanical parts in the exciter do not work well (worn out bearings, loss of oil, broken gears.)	Open the exciter and replace the worn out parts.
		Address to an Assistance Service Center.
The engine turns at minimum RPM but the exciter does not stop.	Centrifugal clutch is broken.	Replace the worn out parts.
Travel speed reduced or discontinuous.	Engine RPM is inconsistent.	Check that during work accelerator lever is set at maximum.
		Adjust engine RPM with appropriate tool.

MODEL	ARP340H	ARP700H	ARP870D
DIMENSION (LxWxH) - mm	1,207×500×1,118	1,494×640×1,218	1,671×690×1,153
OPERATING WEIGHT--Kg	155???	320???	438
PLATE SIZE (LxW) - mm	650 x 500	800 x 470 (Extended 800 x 640)	900 x 500 (Extended 900 x 690)
WORKING SPEED - km/h	1.5	1.5	1.5
VIBRATION FREQUENCY - Hz (V.P.M.)	90(5,400)	70(4,200)	70(4,200)
CENTRIFUGAL FORCE - kN	30	40	50
COMPACTED AREA - m ² /h	650	792	912
COMPACTION DEPTH (DEPENDING ON SOIL) - cm	70~85	70~85	70~85
MAX. GRADEABILITY - °	25°	30°	30°
ENGINE	HONDA GX160	HONDA GX270	HATZ 1B40
ENGINE TYPE	4-STROKE GASOLINE	4-STROKE GASOLINE	4-STROKE, AIR-COOLED DIESEL ENGINE
MAX. POWER OUTPUT - hp (kW)	4.8HP(3.6KW)	8.5HP(6.3KW)	9.3HP(7.3KW)
MAX. ENGINE SPEED - rpm	3600	3600	3600

SECTION 4 PARTS

ARP340H Gearbox Assembly Illustration



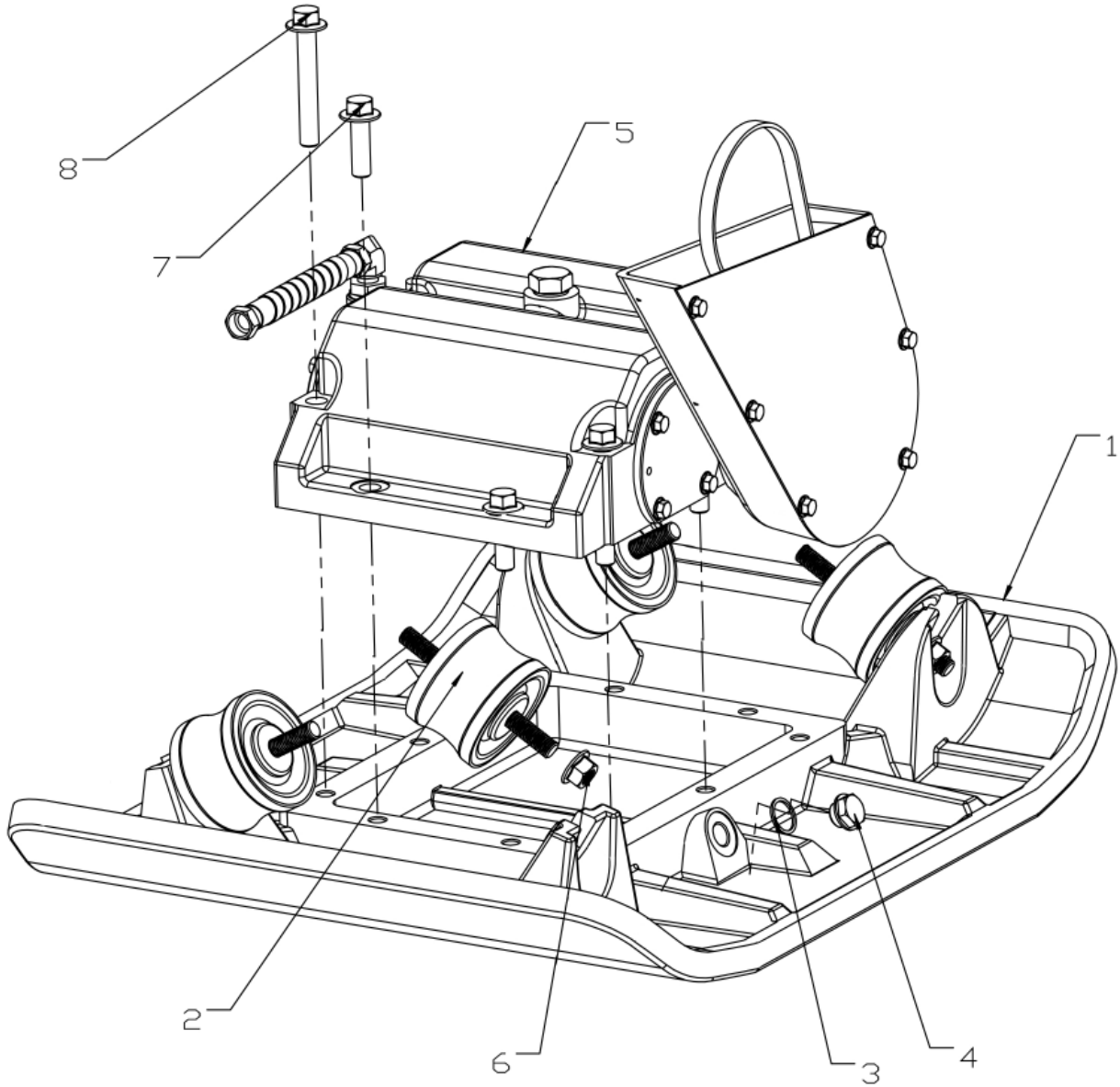
ARP340H Gearbox Assembly Parts List

SECTION 4 PARTS

ITEM	PART NO.	DESCRIPTION	QTY
01-1	063400	FSTN, HHCS M6X12-8.8-DIN-2	6
01-2	063401	V-BELT SEAL SHEET	1
01-3	063402	V-BELT, BX35	1
01-4	063403	GEAR BOX PULLEY	1
01-5	063404	TAPER BORE BUSH	1
01-6	063405	FSTN, HHCS M6X30-8.8-DIN-2	4
01-7	063406	V-BELT COVER BASE PLATE	1
01-8	063407	GEAR BOX OIL SEAL	1
01-9	063408	OIL RING, W04-68X2	4
01-10	063409	HYDRAULIC HOSE	1
01-11	063410	BEARING COVER	2
01-12	063411	ROLLER BEARING	4
01-13	063412	SPIRAL GUARD	1
01-14	063413	SECONDARY GEAR	1
01-15	063414	PRIMARY AXLE KEY	1
01-16	063415	ECCENTRIC WEIGHT-PRIMARY	2
01-17	063416	SOCKET HEAD SCREW	8
01-18	063417	PRIMARY AXLE	1
01-19	063418	GEARBOX	1
01-20	063419	SWITCH GEAR	1
01-21	063420	LED PIN	1
01-22	063421	GUIDE LED PIN	1
01-23	063422	ECCENTRIC WEIGHT-SECONDARY	2
01-24	063423	SECONDARY AXLE KEY	1
01-25	063424	SECONDARY AXLE	1
01-26	063425	PLUNGER ROD	1
01-27	063426	CIRCLIP-SWITCH PLUNGER	1
01-28	063427	BALL BEARING	2
01-29	063428	FSTN, HHCS M5X10-8.8-DIN-1	1
01-30	063429	FSTN, HHCS M6X20-8.8-DIN-2	12
01-31	063430	OIL SEAL-PLUNGER	1
01-32	063431	GB CONNECTOR	1
01-33	063432	SWITCH CYLINDER	1
01-34	063433	FSTN, SHCS M8X16-8.8-DIN-2	1
01-35	063434	FSTN, HHCS M16X20-8.8-DIN-1	1
01-36	063435	FSTN, WASHER ZH-D-M16	1
01-37	063436	O-RING, W04-22*3.1	1

SECTION 4 PARTS

ARP340H Base Plate Assembly Illustration



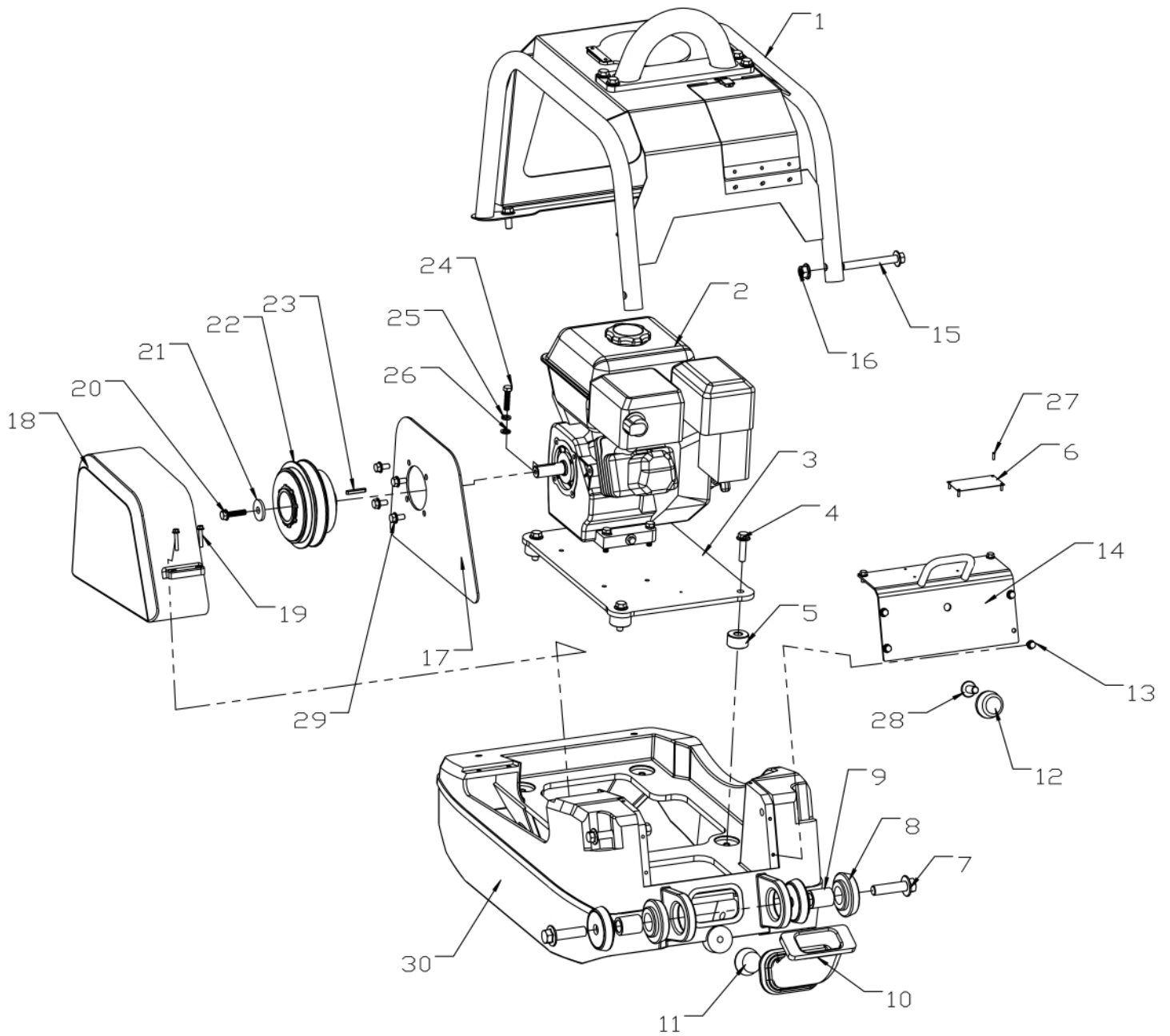
ARP340H Base Plate Assembly Parts List

SECTION 4 PARTS

ITEM	PART NO.	DESCRIPTION	QTY
02-01	063437	BASE PLATE	1
02-02	063438	SHOCK MOUNT	4
02-03	063435	FSTN, WASHER ZH-D-M16	1
02-04	063440	FSTN, HHCS HHOS.B-M-M16X2X25	1
02-05	063441	GEARBOX ASSEMBLY	1
02-06	063442	FSTN, HEX NUT M12-DIN-2	8
02-07	063443	FSTN, HHCS M12X40-12.9-DIN-2	4
02-08	063444	FSTN, HHCS M12X80-12.9-DIN-2	6

SECTION 4 PARTS

ARP340H Engine Base Assembly Illustration



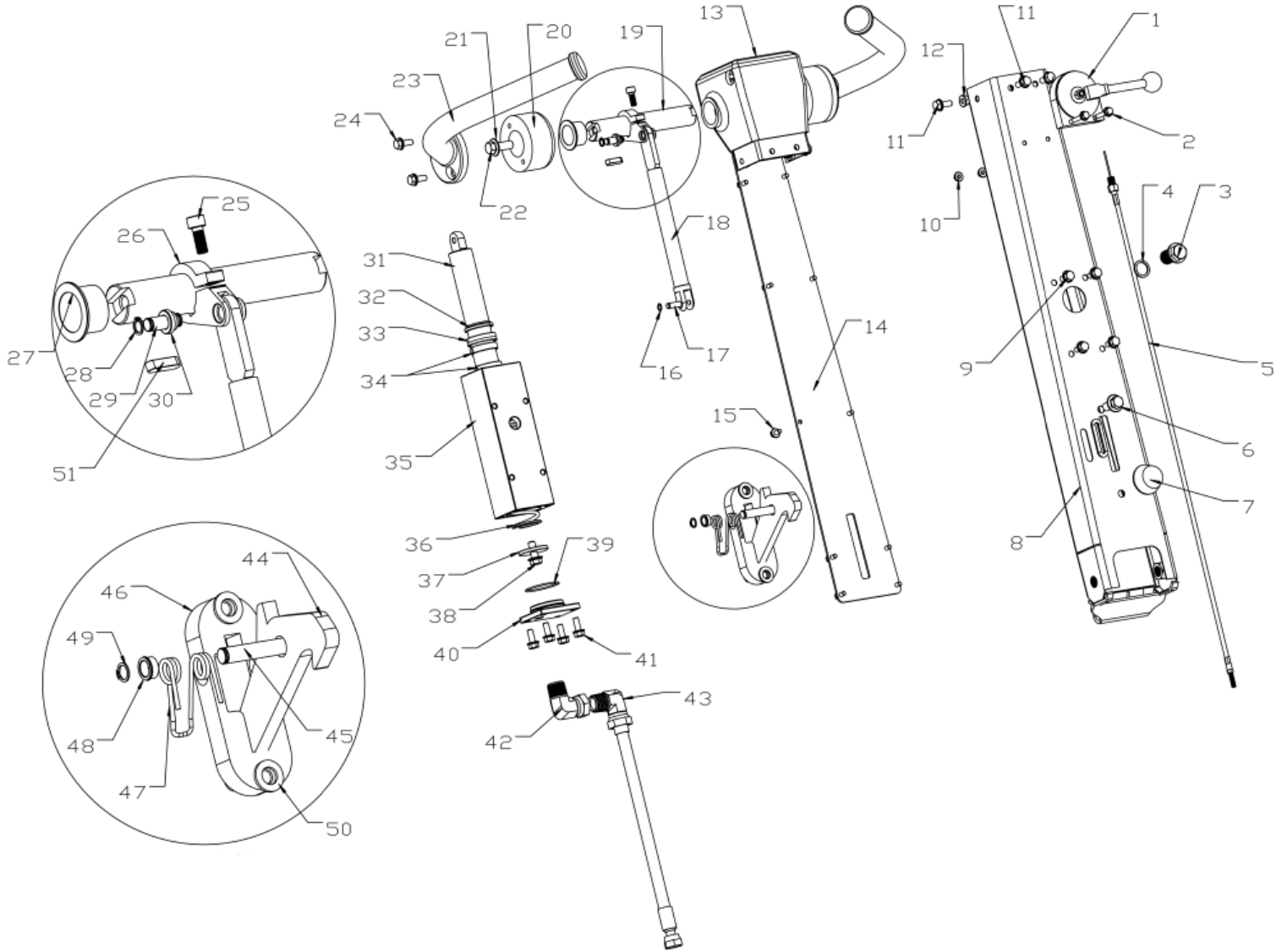
ARP340H Engine Base Assembly Parts List

SECTION 4 PARTS

ITEM	PART NO.	DESCRIPTION	QTY
03-1	063445	SAFETY COVER ASSEMBLY	1
03-2	063446	ENGINE	1
03-3	063447	ENGINE MOUNT PLATE	1
03-4	063448	FSTN, HHCS M10X45-8.8-DIN-2	4
03-5	063449	ENGINE BLOCK	4
03-6	063450	NAMEPLATE	1
03-7	063451	FSTN, HHCS M16X60-8.8-DIN-2	2
03-8	063452	HANDLE BAR SHOCK MOUNT	4
03-9	063453	DISTANCE PIPE	2
03-10	063454	HANDLE BAR TUBE	1
03-11	063455	HANDLEBAR TOUCH	1
03-12	063456	BLOCK	1
03-13	063457	FSTN, HHCS M6X10-8.8-DIN-2	6
03-14	063458	COVER FRONT- WELDING	1
03-15	063459	FSTN, HHCS M12X100-8.8-DIN-2	2
03-16	063442	FSTN, HEX NUT M12-DIN-2	2
03-17	063461	BACK PLATE	1
03-18	063462	COVER V-BELT	1
03-19	063463	FSTN, HHCS M8X45-8.8-DIN-2	4
03-20	063464	FSTN, HHCS M8X35-8.8-DIN-2	1
03-21	063465	WASHER	1
03-22	063466	CENTRIFUGAL CLUTCH	1
03-23	063467	KEY, 5x5x36	1
03-24	063468	FSTN, HHCS M8X35-8.8-DIN-2	4
03-25	063469	FSTN, LW W8-DIN-2	4
03-26	063470	FSTN, FW W12-DIN-2	4
03-27	063471	RIVET	4
03-28	063472	FSTN, HHCS M12X12-8.8-DIN-2	1
03-29	063473	FSTN, HHCS M8X16-8.8-DIN-2	4

SECTION 4 PARTS

ARP340H Handlebar Assembly Illustration



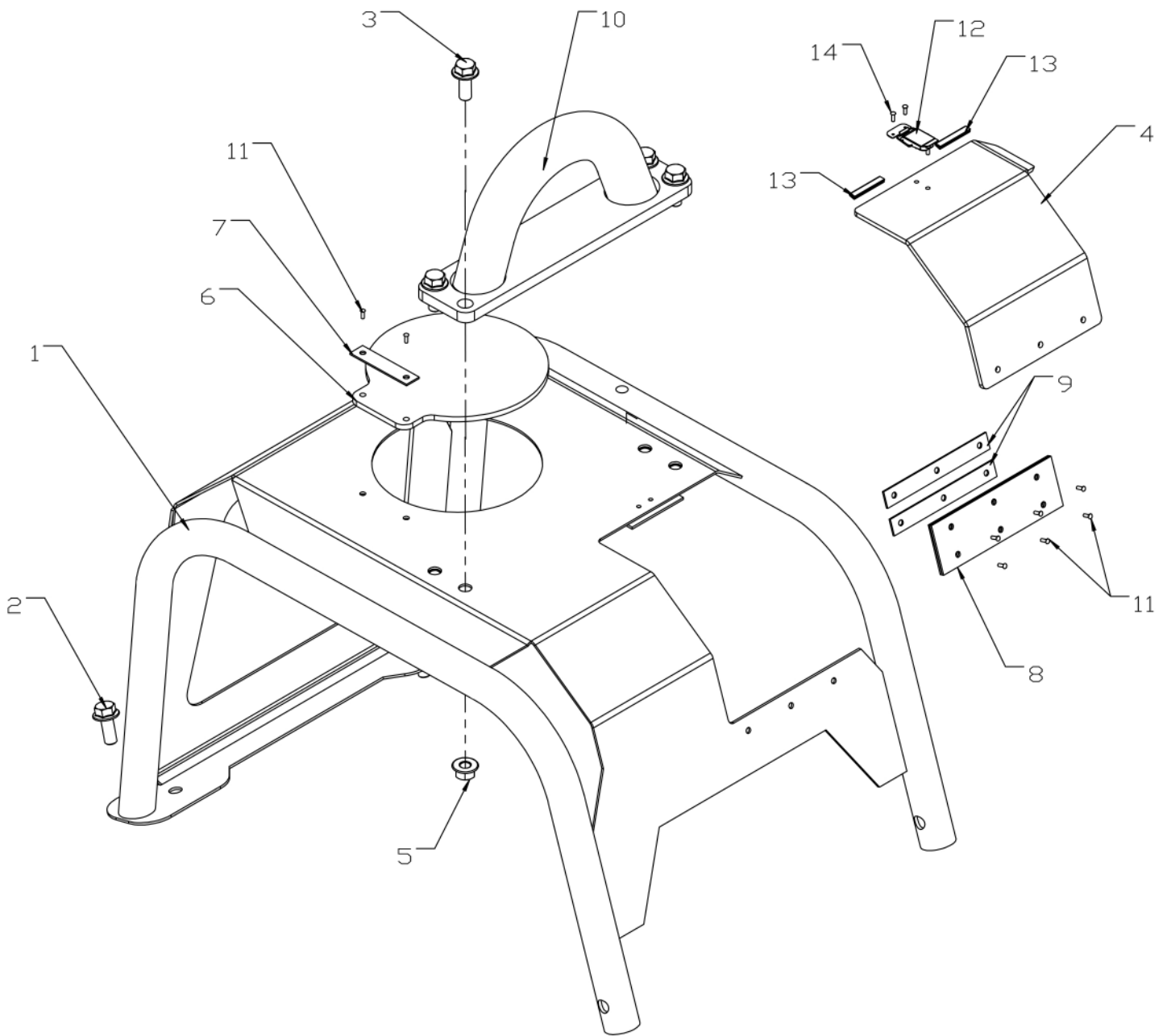
ARP340H Handlebar Assembly Parts List

SECTION 4 PARTS

ITEM	PART NO.	DESCRIPTION	QTY
04-1	063474	CONTROL LEVER	1
04-2	063405	FSTN, HHCS M6X30-8.8-DIN-2	2
04-3	063476	FSTN, HHCS M20x1.5X10	1
04-4	063477	WASHER	1
04-5	063478	CONTROL CABLE	1
04-6	063479	FSTN, HHCS M12X25-8.8-DIN-2	1
04-7	063455	HANDLEBAR TOUCH	1
04-8	063481	HANDLE SUPPORT WELDING	1
04-9	063473	FSTN, HHCS M8X16-8.8-DIN-2	4
04-10	063483	FSTN, HEX NUT M6-DIN-2	2
04-11	063484	FSTN, HHCS M8x20-8.8-DIN-2	4
04-12	063485	FSTN, LOCK NUT M8-DIN-2	4
04-13	063486	HANDLE BAR HOUSING	1
04-14	063487	HANDLE BAR COVER	1
04-15	063400	FSTN, HHCS M6X12-8.8-DIN-2	10
04-16	063489	CIRCLIP	2
04-17	063490	EYE PIN-PIN 8X26	1
04-18	063491	SHIFT BAR WELDMENT	1
04-19	063492	HANDLE BAR AXIS	1
04-20	063493	SHIFT HANDLE BAR SHOCK MOUNT	2
04-21	063494	FSTN, FW WOD.W12-DIN-2	2
04-22	063495	FSTN, HHCS M12x30-8.8-DIN-2	2
04-23	063496	SHIFT HANDLE BAR ASSEMBLY	2
04-24	063497	FSTN, HHCS M8x20-8.8-DIN-2	4
04-25	063498	FSTN, HHCS M8x20-8.8-GB-1	1
04-26	063499	HANDLE LEVER	1
04-27	063500	BUSHING	2
04-28	063501	CIRCLIP	2
04-29	063502	HANDLE LEVER PIN (PIN 10x28)	1
04-30	063503	BRASS BUSHING	2
04-31	063504	PISTON	1
04-32	063505	DUST COVER	1
04-33	063506	OIL SEAL	1
04-34	063507	GUIDE RING	2
04-35	063508	CYLINDER	1
04-36	063509	CYLINDER SPRING	1
04-37	063510	SPRING HOLDING PLATE	1
04-38	063511	FSTN, HHCS M10x25-8.8-DIN-1	1
04-39	063512	O-RING, W04-48x2	1
04-40	063513	CYLINDER COVER	1
04-41	063514	FSTN, HHCS M8x30-8.8-DIN-2	4
04-42	063515	CONNECTOR	1
04-43	063516	CONNECTOR-2	1
04-44	063517	HOOK	1
04-45	063518	HOOK PIN	1
04-46	063519	HOOK FRAME	1
04-47	063520	HAIR SPRING	1
04-48	063521	HOOK PIN NYLON BRACKET	2
04-49	063501	CIRCLIP	2
04-50	063470	FSTN, FW W12-DIN-2	2
04-51	063524	KEY, 8x7x30	1

SECTION 4 PARTS

ARP340H Safety Cover Assembly Illustration



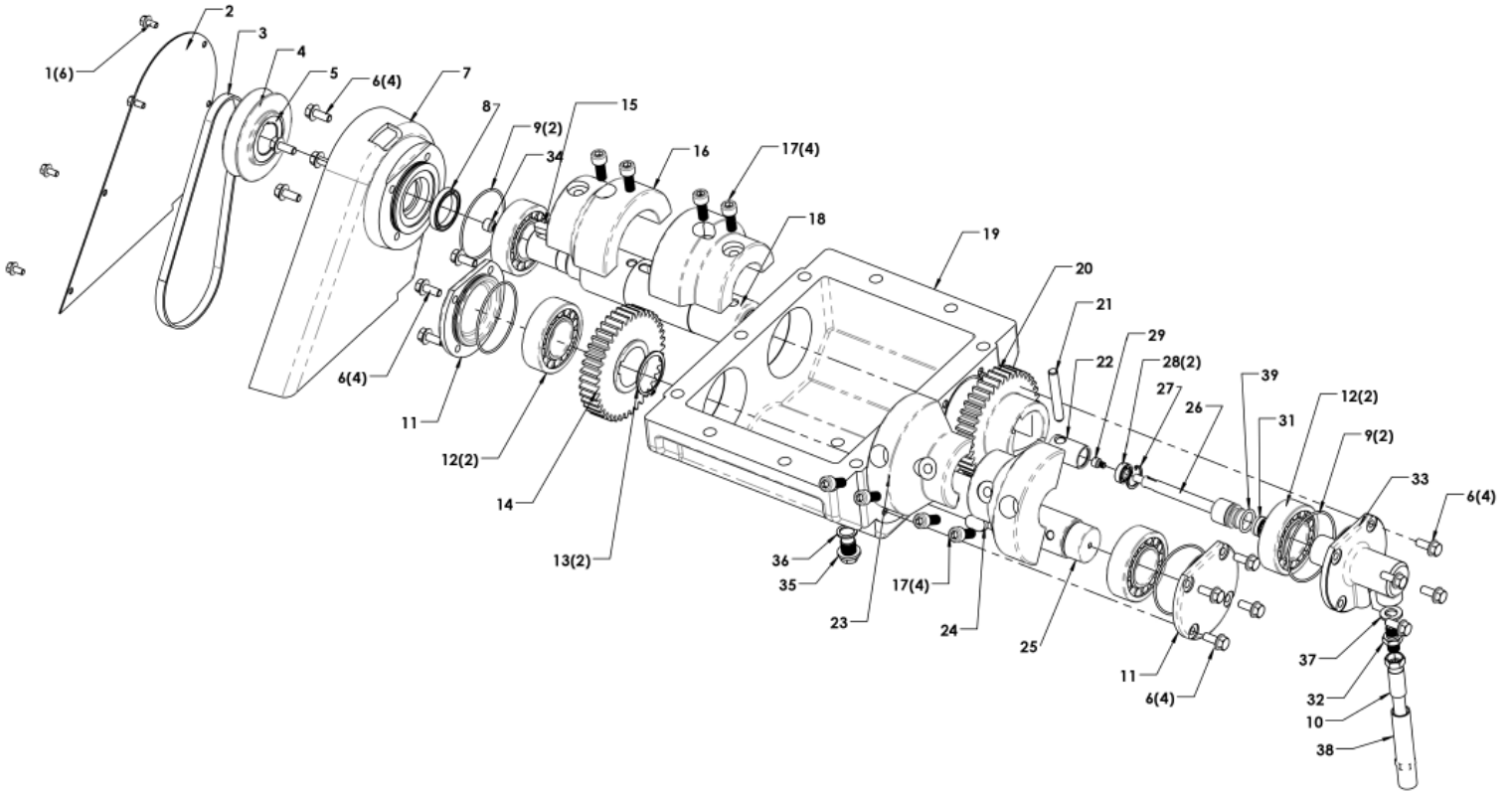
ARP340H Safety Cover Assembly Parts List

SECTION 4 PARTS

ITEM	PART NO.	DESCRIPTION	QTY
05-1	063525	SAFETY COVER WELDMENT	1
05-2	063526	FSTN, HHCS M10X20-8.8-DIN-2	2
05-3	063511	FSTN, HHCS M10x25-8.8-DIN-1	4
05-4	063528	AIR FILTER COVER-HONDA	1
05-5	063529	FSTN, HHCS M10-DIN-2	4
05-6	063530	RUBBER PATCH	1
05-7	063531	RUBBER PATCH HOLDER	1
05-8	063532	RUBBER CONNECT PATCH	1
05-9	063533	PLANK HOLDER	2
05-10	063534	LIFT EYE	1
05-11	063535	RIVET	8
05-12	063536	LOCK	1
05-13	063537	RUBBER BAND	2
05-14	063538	RIVET	4

SECTION 4 PARTS

ARP700H Gearbox Assembly Illustration



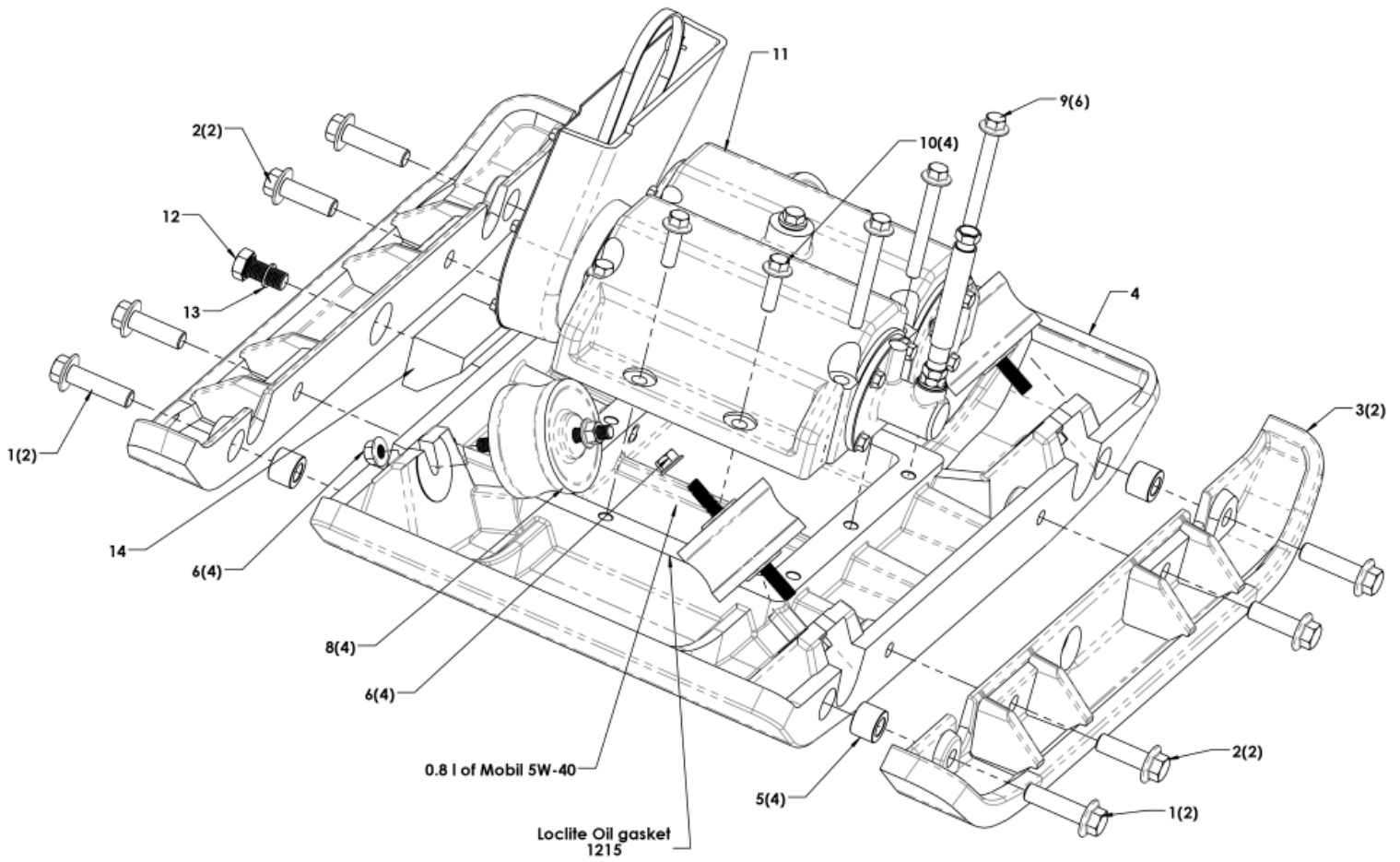
ARP700H Gearbox Assembly Parts List

SECTION 4 PARTS

ITEM	PART NO.	DESCRIPTION	QTY
01-1	063400	FSTN, HHCS M6X12-8.8-DIN-2	6
01-2	063540	V-BELT SEAL SHEET	1
01-3	063541	V-BELT, BX43	1
01-4	063542	GEAR BOX PULLEY	1
01-5	063404	TAPER BORE BUSHING	1
01-6	063544	FSTN, HHCS M8X20-8.8-DIN-2	16
01-7	063545	V-BELT COVER BASE PLATE	1
01-8	063546	GEAR BOX OIL SEAL	1
01-9	063547	OIL RING	4
01-10	063409	HYDRAULIC HOSE	1
01-11	063410	BEARING COVER	2
01-12	063411	ROLLER BEARING	4
01-13	063551	CIRCLIP-SECONDARY AXLE	2
01-14	063552	SECONDARY GEAR	1
01-15	063553	PRIMARY AXLE KEY	1
01-16	063554	ECCENTRIC WEIGHT-PRIMARY	2
01-17	063555	SOCKET HEAD SCREW	8
01-18	063556	PRIMARY AXLE	1
01-19	063557	GEARBOX	1
01-20	063558	SWITCH GEAR	1
01-21	063559	LED PIN	1
01-22	063560	GUIDE LED PIN	1
01-23	063561	ECCENTRIC WEIGHT-SECONDARY	2
01-24	063562	SECONDARY AXLE KEY	1
01-25	063563	SECONDARY AXLE	1
01-26	063564	SWITCH PLUNGER	1
01-27	063565	CIRCLIP-SWITCH PLUNGER	1
01-28	063566	BALL BEARING	2
01-29	063457	FSTN, HHCS M6X10-8.8-DIN-2	1
01-31	063569	OIL SEAL-PLUNGER	1
01-32	063570	GB CONNECTOR	1
01-33	063571	SWITCH CYLINDER	1
01-34	063572	SOCKET SCREW	1
01-35	063573	FSTN, HHCS M16X20-8.8-DIN-2	1
01-36	063574	FSTN, FW D-M16	1
01-37	063575	FSTN, FW D-M12	1
01-38	063576	SPIRAL GUARD	1
01-39	063577	O-RING, W04-26*3.1	1

SECTION 4 PARTS

ARP700H Base Plate Assembly Illustration



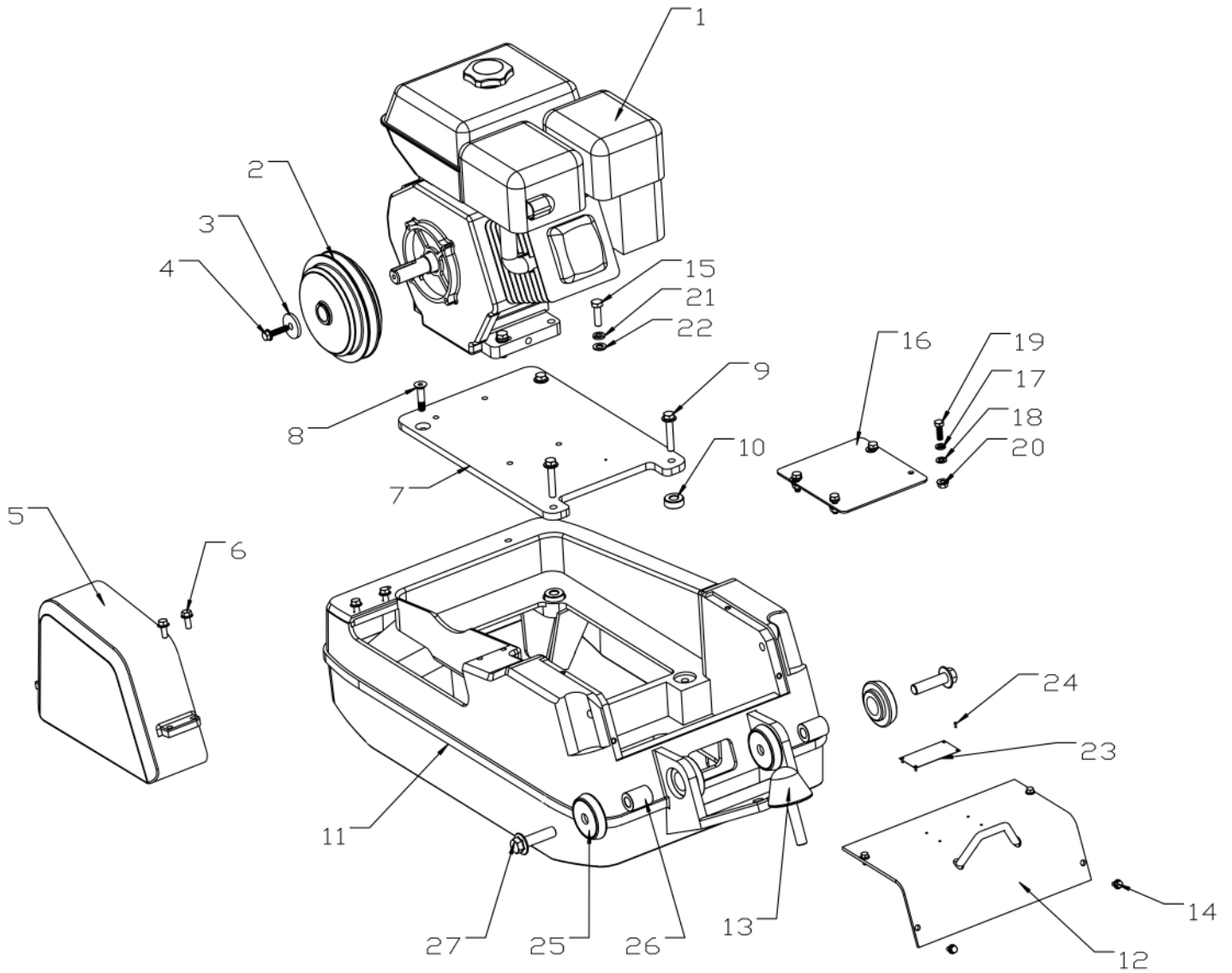
ARP700H Base Plate Assembly Parts List

SECTION 4 PARTS

ITEM	PART NO.	DESCRIPTION	QTY
02-01	063578	FSTN, HHCS M16X60-8.8-DIN-2	4
02-02	063579	FSTN, HHCS M16X50-8.8-DIN-2	4
02-03	063580	BOTTOMPLATE EXTENSION	2
02-04	063581	BOTTOM PLATE	1
02-05	063582	BASE PLATE PRECISION MOUNT	4
02-06	063442	FSTN, HEX NUT M12-DIN-2	8
02-08	063585	SHOCK MOUNT 100X62	4
02-09	063586	FSTN, HHCS M12X100-12.9-DIN-3	6
02-10	063587	FSTN, HHCS M12X40-12.9-DIN-3	4
02-11	063588	GEARBOX ASSEMBLY	1
02-12	063589	FSTN, HHCS M16X1.5-DIN-3	1
02-13	063574	FSTN, FW D-M16	1
02-14	063591	FOAM	1

SECTION 4 PARTS

ARP700H Engine Base Assembly Illustration



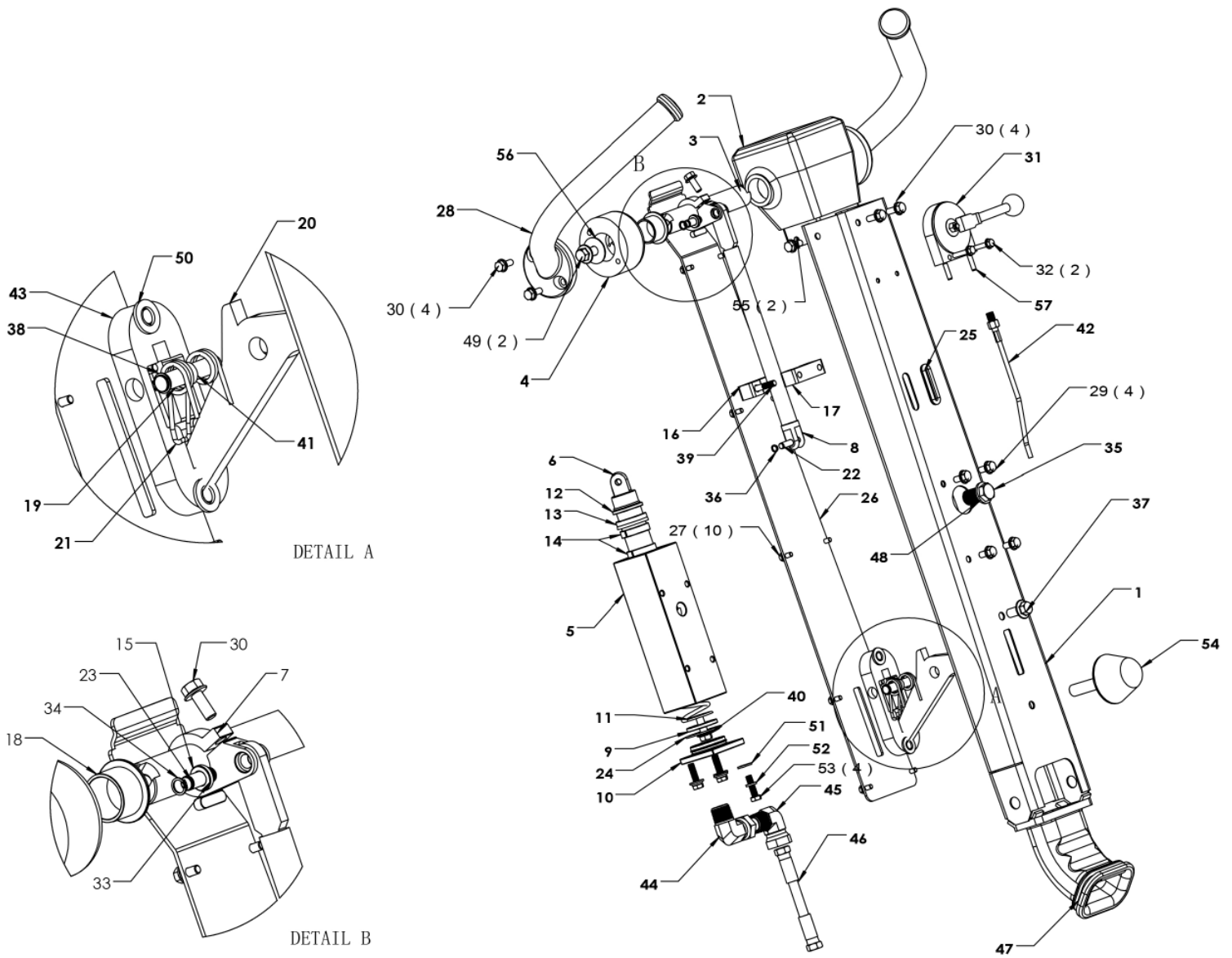
ARP700H Engine Base Assembly Parts List

SECTION 4 PARTS

ITEM	PART NO.	DESCRIPTION	QTY
03-1	063592	HONDA ENGINE	1
03-2	063593	CENTRIFUGAL CLUTCH	1
03-3	063594	WASHER	1
03-4	063595	FSTN, FLANGE BOLT M8X35-8.8-DIN-2	1
03-5	063596	COVER V-BELT	1
03-6	063544	FSTN, HHCS M8X20-8.8-DIN-2	4
03-7	063598	ENGINE MOUNT PLATE	1
03-8	063599	FSTN, C'SINK M10x50-8.8-DIN-2	1
03-9	063600	FSTN, FLANGE BOLT M10X50-8.8-DIN-2	3
03-10	063601	ENGINE BLOCK	4
03-11	063602	ENGINE BASE	1
03-12	063603	COVER PLATE	1
03-13	063604	HANDLE BAR TOUCH	1
03-14	063605	FSTN, FLANGE BOLT M6X12-8.8-DIN-2	4
03-15	063606	FSTN, HHCS M10X35-8.8-DIN-2	4
03-16	063607	COVER PLATE	1
03-17	063608	FSTN, LW W8-DIN-2	4
03-18	063609	FSTN, FW W8-DIN-2	4
03-19	063610	FSTN, HHCS M8X25-8.8-DIN-2	4
03-20	063611	FSTN, HEX NUT M8-DIN-2	4
03-21	063612	FSTN, LW W10-DIN-2	4
03-22	063613	FSTN, FW W10-DIN-2	4
03-23	063614	NAMEPLATE	1
03-24	063615	RIVET	4
03-25	063452	HANDLE BAR SHOCK MOUNT	4
03-26	063453	DISTANCE PIPE	2
03-27	063578	FSTN, HHCS M16X60-8.8-DIN-2	2

SECTION 4 PARTS

ARP700H Handlebar Assembly Illustration



ARP700H Handlebar Assembly Parts List

SECTION 4 PARTS

ITEM	PART NO.	DESCRIPTION	QTY
04-1	063619	HANDLE SUPPORT WELDING	1
04-2	063486	HANDLE BAR HOUSING	1
04-3	063492	HANDLE BAR AXIS	1
04-4	063493	SHIFT HANDLE BAR SHOCK MOUNT	2
04-5	063508	CYLINDER	1
04-6	063504	PISTON	1
04-7	063499	HANDLE LEVER	1
04-8	063626	SHIFT BAR WELDMENT	1
04-9	063510	SPRING HOLDING PLATE	1
04-10	063513	CYLINDER COVER	1
04-11	063629	CYLINDER SPRING	1
04-12	063505	DUST COVER	1
04-13	063506	OIL SEAL	1
04-14	063507	GUIDE RING	2
04-15	063503	BRASS BUSHING	2
04-16	063634	BRACKET 1	1
04-17	063635	BRACKET 2	1
04-18	063500	BUSHING	2
04-19	063518	HOOK PIN	1
04-20	063517	HOOK	1
04-21	063520	HAIR SPRING	1
04-22	063490	EYE PIN-PIN 8X26	1
04-23	063502	HANDLE LEVER PIN (PIN 10x28)	1
04-24	063642	O-RING	1
04-25	063643	CABLE SLOT RUBBER	1
04-26	063644	HANDLE BAR	1
04-27	063645	BOLT	10
04-28	063496	SHIFT HANDLE BAR ASSEMBLY	2
04-29	063647	FSTN, HHCS M8x16-8.8-DIN-1	4
04-30	063648	FSTN, HHCS M8x20-8.8-DIN-1	8
04-31	063474	CONTROL LEVER	1
04-32	063650	FSTN, HHCS M6x30-8.8-DIN-1	2
04-33	063651	KEY, 8x7x30	1
04-34	063652	CIRCLIP, CS.RG10	2
04-35	063653	FSTN, HHCS M20x1.5X10	1
04-36	063654	CIRCLIP, CS.RG8	2
04-37	063655	FSTN, HHCS M12X25-8.8-DIN-2	1
04-38	063656	CIRCLIP, CS.RG16	2
04-39	063657	FSTN, HHCS M8x50-8.8-DIN-2	2
04-40	063658	FSTN, HHCS M10x25-8.8-DIN-1	1
04-41	063521	HOOK PIN NYLON BRACKET	2
04-42	063660	CONTROL CABLE	1
04-43	063519	HOOK FRAME	1
04-44	063515	CONNECTOR	1
04-45	063516	CONNECTOR-2	1
04-46	063409	HYDRAULIC HOSE	1
04-47	063665	HANDLEBAR TUBE	1
04-48	063666	FSTN, WASHER ZH-D-M20	1
04-49	063667	FSTN, HHCS M12x30-8.8-DIN-2	2
04-50	063613	FSTN, FW W10-DIN-2	2
04-51	063609	FSTN, FW W8-DIN-2	4
04-52	063608	FSTN, LW W8-DIN-2	4
04-53	063671	FSTN, HHCS M8x30-8.8-DIN-2	4
04-54	063672	HANDLEBAR TOUCH	1
04-55	063673	FSTN, LOCKNUT M8-DIN-2	4
04-56	063674	FSTN, FW WOD.W12-DIN-2	2
04-57	063675	SPLIT PIN, 3X12	2

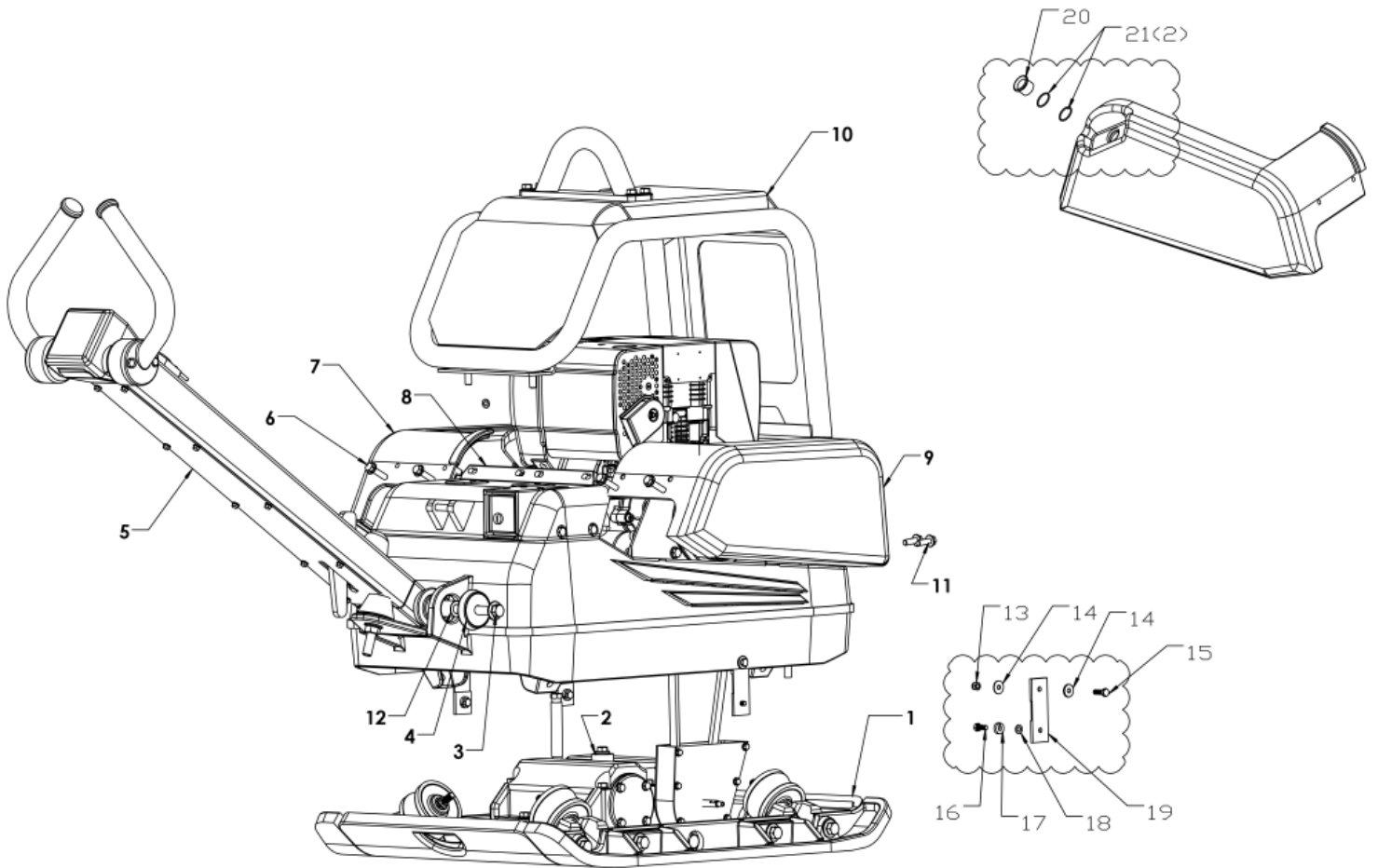
ARP700H Safety Cover Assembly Parts List

SECTION 4 PARTS

ITEM	PART NO.	DESCRIPTION	QTY
05-1	063676	SAFETY COVER WELDMENT	1
05-2	063677	FSTN, HHCS M10X20-8.8-DIN-2	2
05-3	063658	FSTN, HHCS M10x25-8.8-DIN-1	4
05-4	063679	AIR FILTER COVER-HONDA	1
05-5	063680	FSTN, HEX NUT M10-DIN-2	4
05-6	063530	RUBBER PATCH	1
05-7	063531	RUBBER PATCH HOLDER	1
05-8	063532	RUBBER CONNECT PATCH	1
05-9	063533	PLANK HOLDER	2
05-10	063534	LIFT EYE	1
05-11	063535	RIVET	8
05-12	063536	LOCK	1
05-13	063538	RIVET	4
05-14	063537	RUBBER BAND	2
05-15	063690	FSTN, HHCS M12X80-8.8-DIN-2	2

SECTION 4 PARTS

ARP870D Assembly Illustration



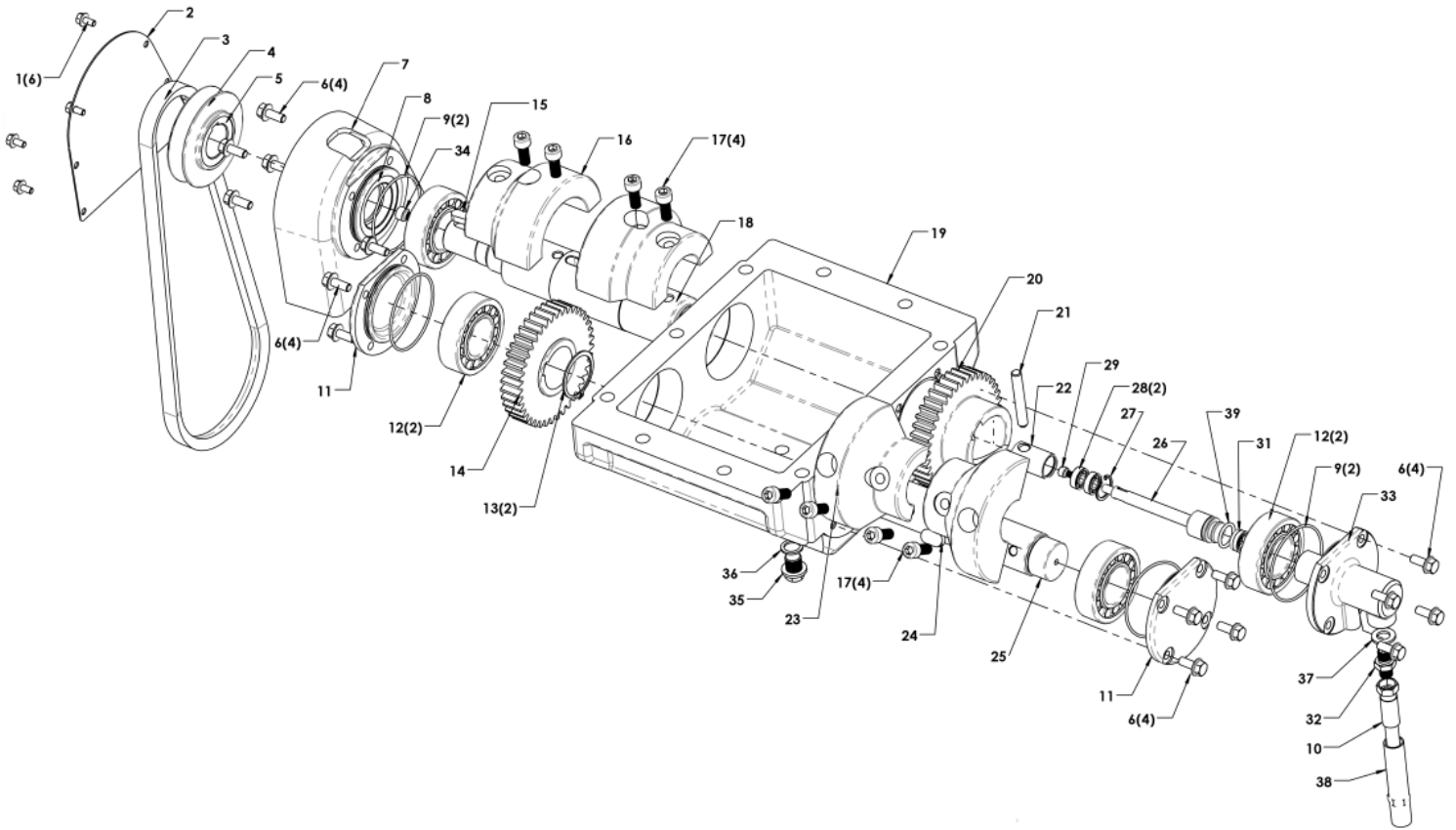
ARP870D Assembly Parts List

SECTION 4 PARTS

NO.	PART NO.	DESCRIPTION	QTY
00-1	063691	BASEPLATE ASSEMBLY	1
00-2	063692	GEARBOX ASSEMBLY	1
00-3	063693	FSTN, HHCS M16X70-10.9-DIN-2	2
00-4	063694	HANDLEBAR SHOCK MOUNT	4
00-5	063695	HANDLEBAR ASSEMBLY	1
00-6	063696	FSTN, HHCS M10X40-8.8-DIN-2	4
00-7	063697	COVER LEFT	1
00-8	063698	RUBBER PATCH	1
00-9	063699	COVER V-BELT	1
00-10	063700	SAFETY COVER ASSEMBLY	1
00-11	063701	FSTN, HHCS M10X30-8.8-DIN-2	4
00-12	063702	DISTANCE PIPE	2
00-13	063703	LOCK NUT	4
00-14	063704	INCREASE THE FLAT PAD	8
00-15	063705	FSTN, HHCS M8X25-8.8-DIN-1	4
00-16	063648	FSTN, HHCS M8x20-8.8-DIN-1	4
00-17	063707	ELASTIC WASHER	4
00-18	063708	FLAT GASKET	4
00-19	063709	BELT	4
00-20	063710	BUSH	1
00-21	063711	O-RING	2

SECTION 4 PARTS

ARP870D Gearbox Assembly Illustration



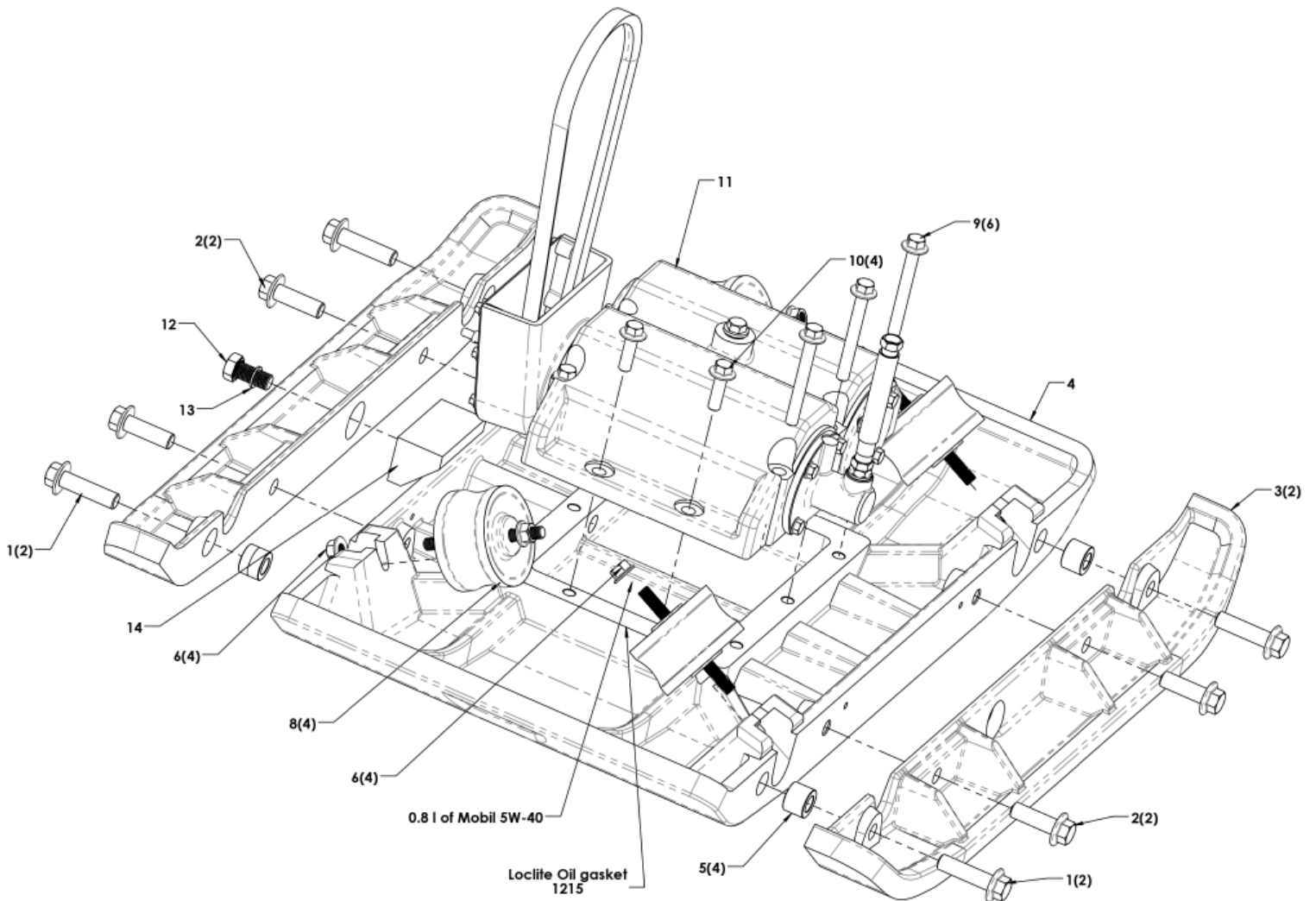
ARP870D Gearbox Assembly Parts List

SECTION 4 PARTS

NO.	PART NO.	DESCRIPTION	QTY
01-1	063712	FSTN, HHCS M6X12-8.8-DIN-2	6
01-2	063713	V-BELT SEAL SHEET	1
01-3	063714	V-BELT	1
01-4	063542	GEAR BOX PULLEY	1
01-5	063404	TAPER BORE BUSHING	1
01-6	063544	FSTN, HHCS M8X20-8.8-DIN-2	16
01-7	063718	V-BELT COVER BASE PLATE	1
01-8	063546	GEAR BOX OIL SEAL	1
01-9	063547	OIL RING	4
01-10	063409	HYDRAULIC HOSE	1
01-11	063410	BEARING COVER	2
01-12	063411	ROLLER BEARING	4
01-13	063551	CIRCLIP-SECONDARY AXLE	2
01-14	063552	SECONDARY GEAR	1
01-15	063553	PRIMARY AXLE KEY	1
01-16	063554	ECCENTRIC WEIGHT-PRIMARY	2
01-17	063555	FSTN, SHCS M10x25-12.9-DIN-3	8
01-18	063556	PRIMARY AXLE	1
01-19	063557	GEARBOX	1
01-20	063558	SWITCH GEAR	1
01-21	063559	LED PIN	1
01-22	063560	GUIDE LED PIN	1
01-23	063561	ECCENTRIC WEIGHT-SECONDARY	2
01-24	063562	SECONDARY AXLE KEY	1
01-25	063563	SECONDARY AXLE	1
01-26	063564	SWITCH PLUNGER	1
01-27	063565	CIRCLIP-SWITCH PLUNGER	1
01-28	063566	BALL BEARING	2
01-29	063457	FSTN, HHCS M6X10-8.8-DIN-2	1
01-30	063741		
01-31	063742	OIL SEAL-PLUNGER	1
01-32	063570	GB CONNECTOR	1
01-33	063571	SWITCH CYLINDER	1
01-34	063745	FSTN, SHCS M8x16-8.8-DIN-2	1
01-35	063746	FSTN, HHCS M16X20-8.8-DIN-2	1
01-36	063747	WASHER	1
01-37	063748	WASHER	1
01-38	063749	SPIRAL GUARD	1
01-39	063750	O-RING, W04-26*3.1	1

SECTION 4 PARTS

ARP870D Base Plate Assembly Illustration



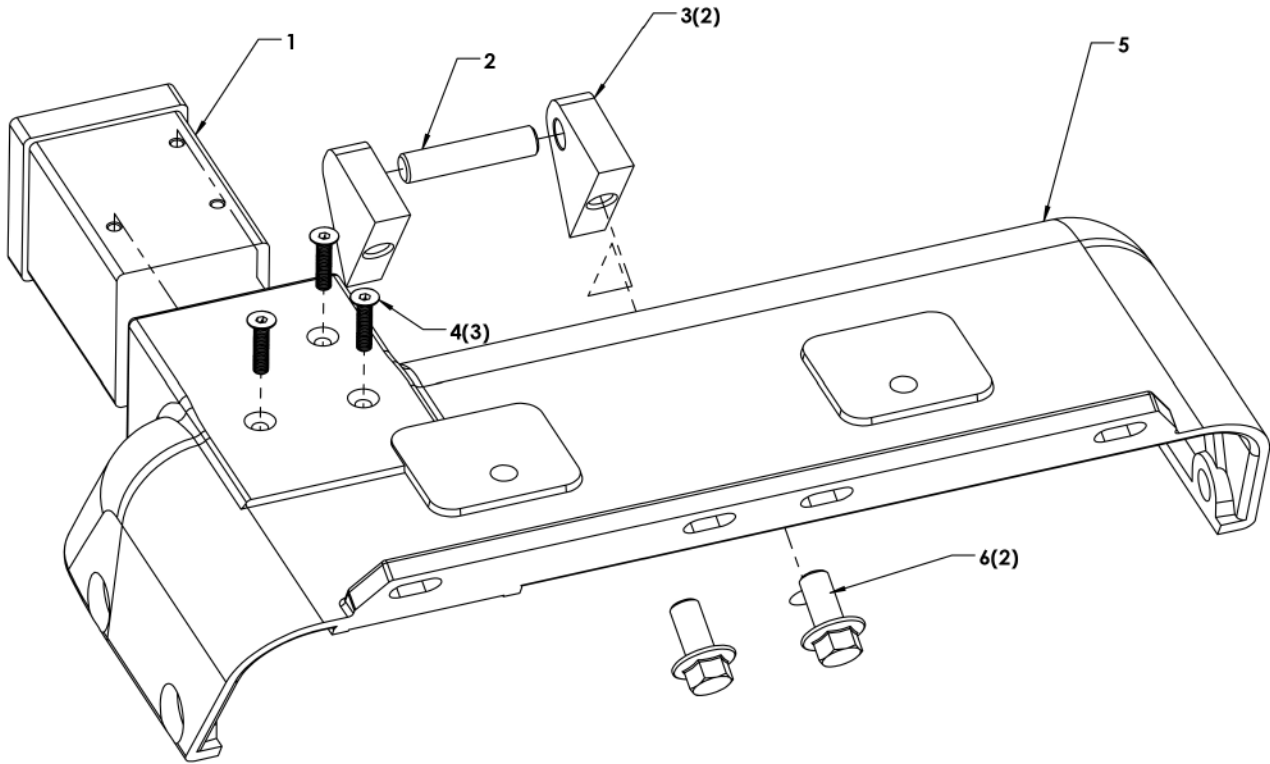
ARP870D Base Plate Assembly Parts List

SECTION 4 PARTS

ITEM	PART NO.	DESCRIPTION	QTY
02-1	063578	FSTN, HHCS M16X60-8.8-DIN-2	4
02-2	063579	FSTN, HHCS M16X50-8.8-DIN-2	4
02-3	063753	BOTTOM PLATE EXTENSION	2
02-4	063754	BOTTOM PLATE	1
02-5	063582	BASE PLATE PRECISION MOUNT	4
02-6	063756	FSTN, FLANGE NUT M12-DIN-2	8
02-7			
02-8	063758	SHOCK MOUNT 100X62	4
02-9	063759	FSTN, HHCS M12X100-12.9-DIN-3	6
02-10	063760	FSTN, HHCS M12X40-12.9-DIN-3	4
02-11	063761	GEARBOX ASSEMBLY	1
02-12	063589	FSTN, HHCS M16X1.5-DIN-3	1
02-13	063574	FSTN, FW D-M16	1
02-14	063591	FOAM	1

SECTION 4 PARTS

ARP870D Rear Cover Assembly Illustration



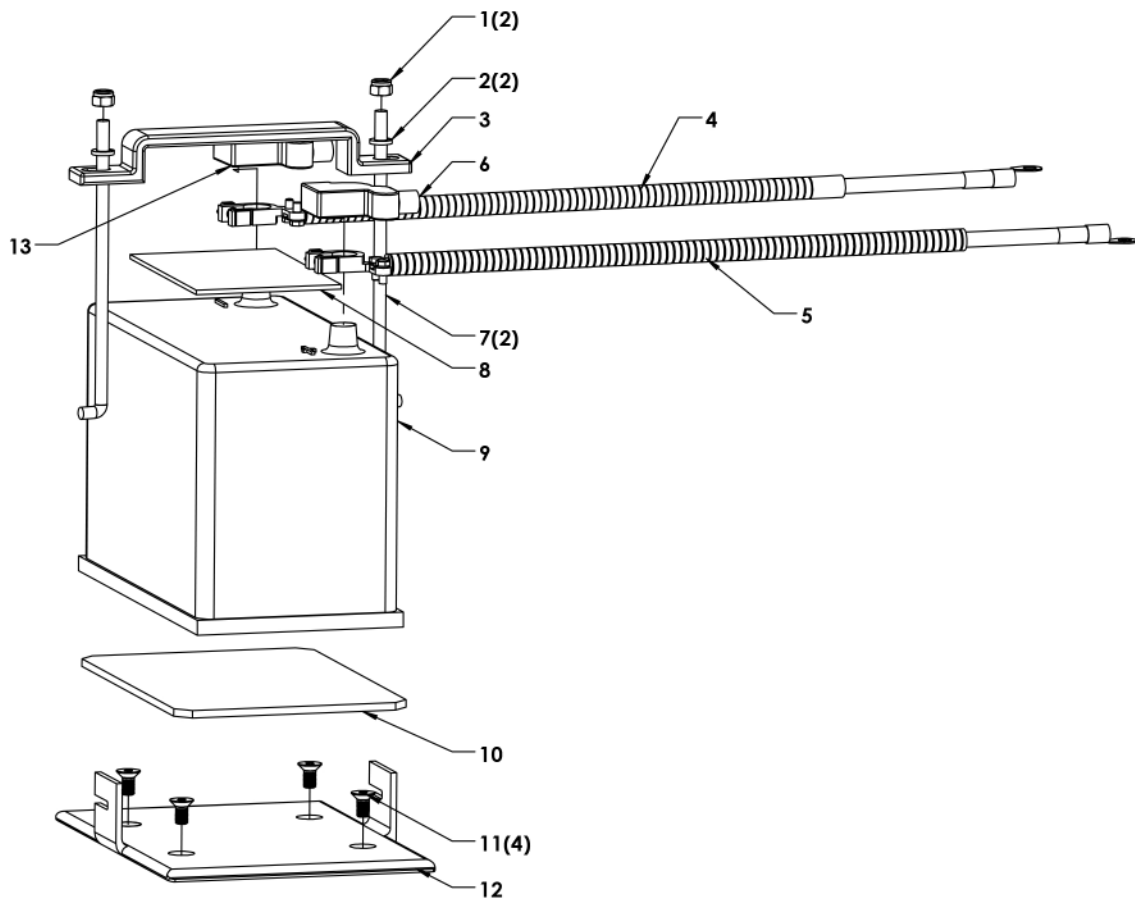
ARP870D Rear Cover Assembly Parts List

SECTION 4 PARTS

ITEM	PART NO.	DESCRIPTION	QTY
03-1	063765	KEY SWITCH	1
03-2	063766	SUPPORT PIN	1
03-3	063767	SUPPORT	2
03-4	063768	FSTN, SS M6x30-8.8-DIN-2	3
03-5	063769	COVER REAR	1
03-6	063770	FSTN, HHCS M12X20-8.8-DIN-2	4

SECTION 4 PARTS

ARP870D Battery Assembly Illustration



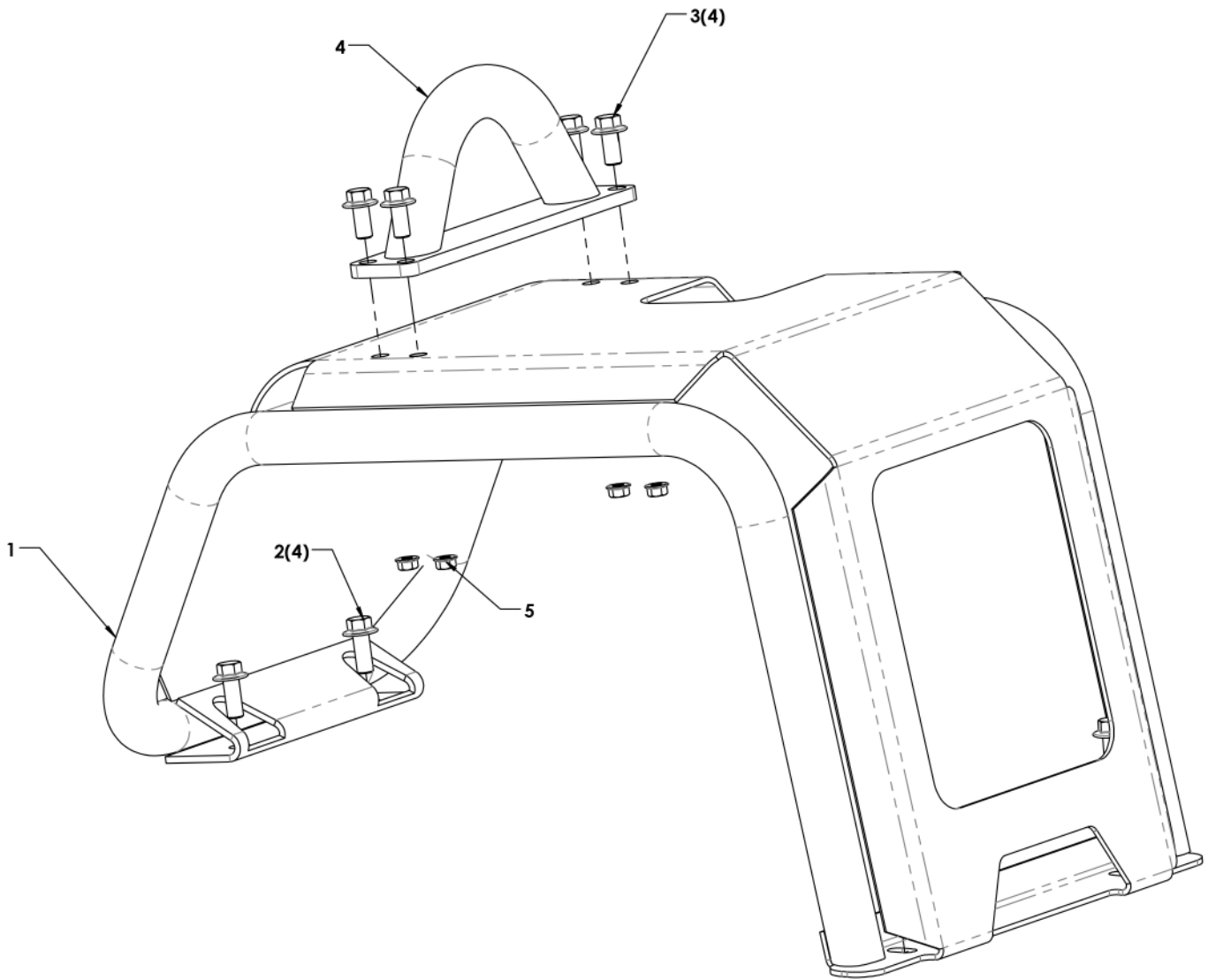
ARP870D Battery Assembly Parts List

SECTION 4 PARTS

ITEM	PART NO.	DESCRIPTION	QTY
04-1	063771	FSTN, LOCK NUT M8-DIN-2	2
04-2	063772	FSTN, FW W8-DIN-2	2
04-3	063773	BATTERY SUPPORT 2	1
04-4	063774	CATHODE WIRE	1
04-5	063775	ANODE WIRE	1
04-6	063776	ANODE CAP	1
04-7	063777	BATTERY SUPPORT ROD	2
04-8	063778	RUBBER PACKAGING	1
04-9	063779	BATTERY	1
04-10	063780	BATTERY BOTTOM COVER	1
04-11	063781	FSTN, SS M8x25-8.8-DIN-1	4
04-12	063782	BATTERY BOTTOM PLATE	1
04-13	063783	CATHODE CAP	1

SECTION 4
PARTS

ARP870D Safety Cover Assembly
Illustration



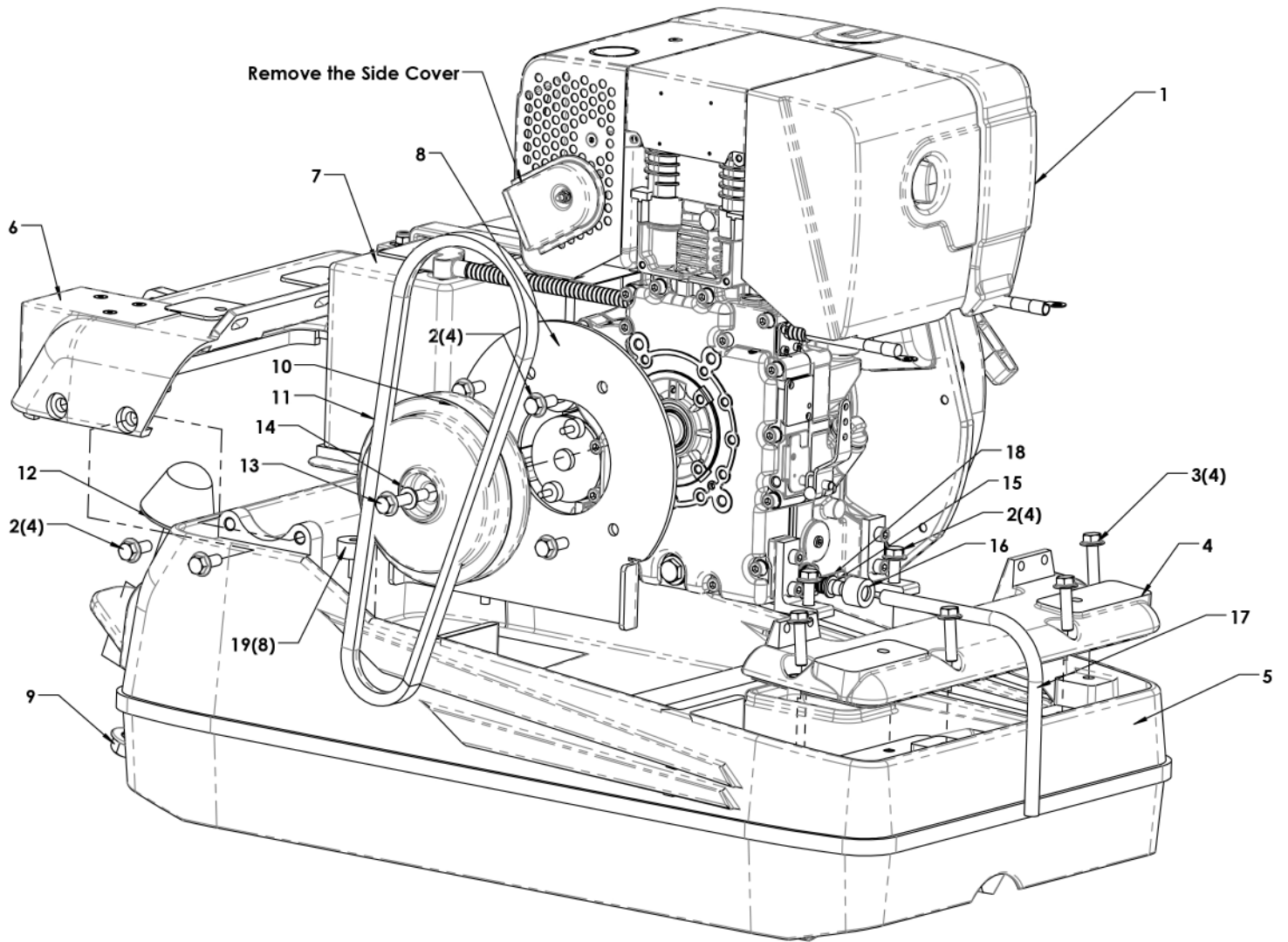
ARP870D Safety Cover Assembly Parts List

SECTION 4 PARTS

ITEM	PART NO.	DESCRIPTION	QTY
05-1	063784	SAFETY COVER WELDMENT	1
05-2	063785	FSTN, HHCS M12X25-8.8-DIN-2	4
05-3	063786	FSTN, HHCS M12X30-10.9-DIN-2	4
05-4	063787	LIFT EYE	1
05-5	063788	FSTN, HEX NUT M12-DIN-2	4

SECTION 4 PARTS

ARP870D Engine Base Assembly Illustration



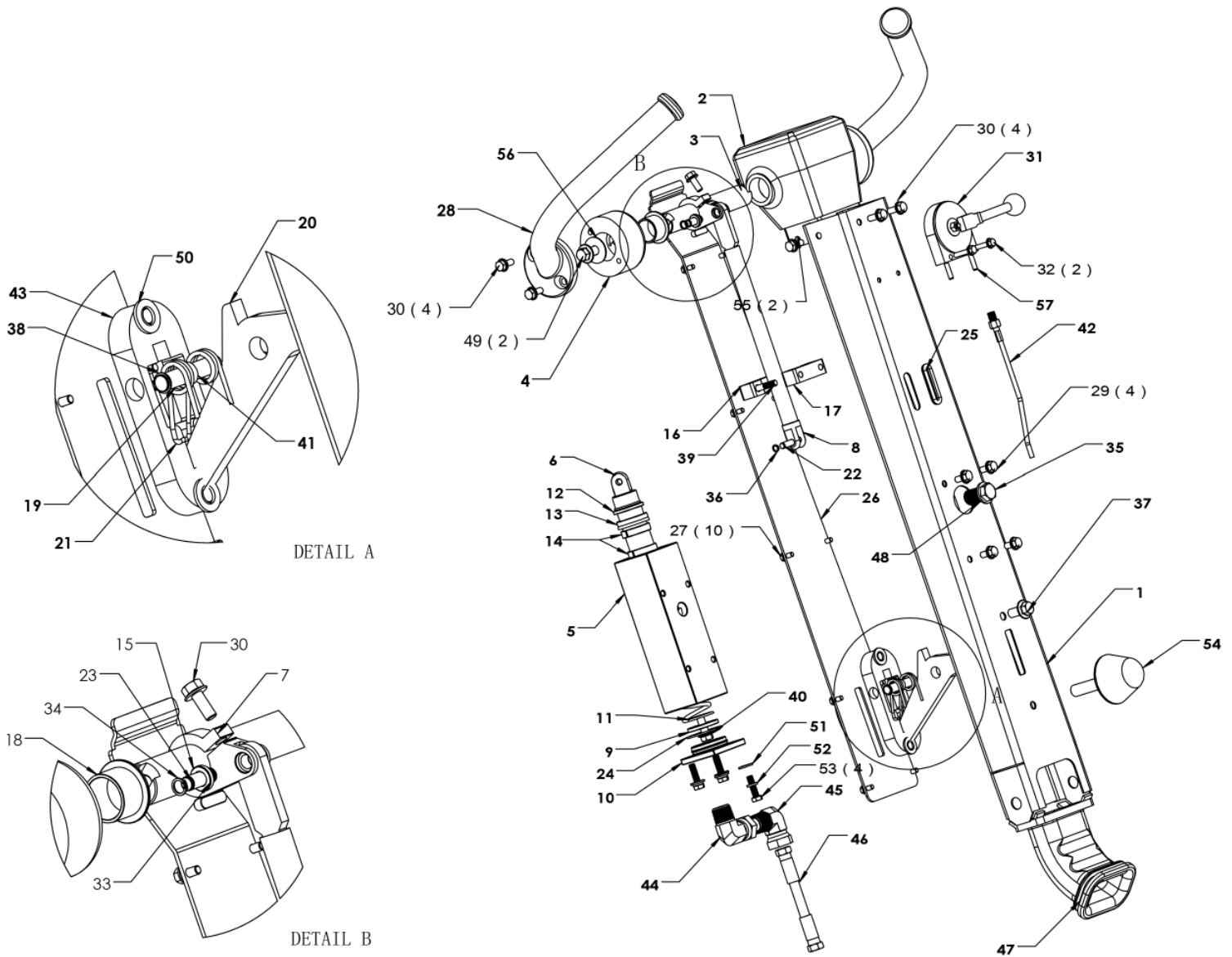
ARP870D Engine Base Assembly Parts List

SECTION 4 PARTS

ITEM	PART NO.	DESCRIPTION	QTY
06-1	063789	HATZ ENGINE	1
06-2	063790	FSTN, HHCS M10X25-8.8-DIN-2	8
06-3	063791	FSTN, HHCS M10X40-8.8-DIN-2	4
06-4	063792	COVER FRONT	1
06-5	063793	ENGINE BASE	1
06-6	063794	COVER REAR ASSEMBLY	1
06-7	063795	BATTERY ASSEMBLY	1
06-8	063796	COVER V-BELT PLATE	1
06-9	063797	FSTN, HEX NUT M16-DIN-2	1
06-10	063798	CENTRIFUGAL CLUTCH	1
06-11	063799	V-BELT, E125-1805	1
06-12	063800	HANDLEBAR TOUCH	1
06-13	063801	FSTN, HHCS M10x55-8.8-DIN-2	1
06-14	063802	FSTN, FW 80-0303	1
06-15	063803	DRAIN KNOB	1
06-16	063804	DRAIN CONNECTOR	1
06-17	063805	HOSE	1
06-18	063806	O-RING, W02-9X1.5	2
06-19	063807	FSTN, FW 90P-010600	8

SECTION 4 PARTS

ARP870D Handlebar Assembly Illustration

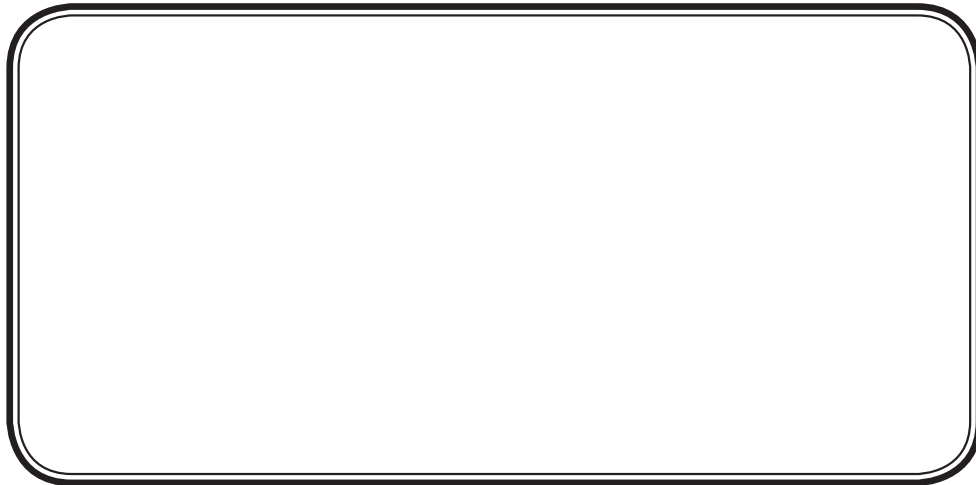


ARP870D Handlebar Assembly Parts List

SECTION 4 PARTS

NO.	PART NO.	DESCRIPTION	QTY
07-1	063619	Handle Support Welding	1
07-2	063486	Handle Bar Housing	1
07-3	063492	Handle Bar Axis	1
07-4	063493	Shift handle Bar Shock Mount	2
07-5	063508	Cylinder	1
07-6	063504	Piston	1
07-7	063499	Handle Lever	1
07-8	063626	Shift Bar Weldment	1
07-9	063510	Spring Holding Plate	1
07-10	063513	Cylinder Cover	1
07-11	063629	Cylinder Spring	1
07-12	063505	Dust cover	1
07-13	063506	Oil seal	1
07-14	063507	Guide ring	2
07-15	063503	Brass Bush	2
07-16	063634	Bracket 1	1
07-17	063635	Bracket 2	1
07-18	063500	Brass Bush	2
07-19	063518	Hook Pin	1
07-20	063517	Hook	1
07-21	063520	Hair Spring	1
07-22	063490	Eye pin-pin 8x26	1
07-23	063502	Handle lever pin(pin 10x28)	1
07-24	063642	O-ring	1
07-25	063643	Cable slot rubber	1
07-26	063644	Handle bar	1
07-27	063645	Bolt	10
07-28	063496	Shift handle bar assembly	2
07-29	063647	Bolt	4
07-30	063648	Bolt	8
07-31	063474	Control lever	1
07-32	063650	Bolt	2
07-33	063651	key	1
07-34	063652	Circlip	2
07-35	063653	Bolt	1
07-36	063654	Circlip	2
07-37	063655	Bolt	1
07-38	063656	Circlip	2
07-39	063657	Bolt	2
07-40	063658	Bolt	1
07-41	063521	Hook Pin Nylon Bracket	2
07-42	063660	Control Cable	1
07-43	063519	Hook Frame	1
07-44	063515	Connector	1
07-45	063516	Connector-2	1
07-46	063548	Hydraulic Hose	1
07-47	063665	HandleBar Tube	1
07-48	063666	Washer	1
07-49	063667	Bolt	2
07-50	063613	Washer	2
07-51	063609	Washer	4
07-52	063608	Washer	4
07-53	063671	Bolt	4
07-54	063672	HandleBar Touch	1
07-55	063673	LockNut	4
07-56	063674	Washer	2
07-57	063675	Split Pin	2

YOUR TOTAL SOURCE FOR CONCRETE EQUIPMENT



allen
ENGINEERING
CORPORATION

800-643-0095 or 870-236-7751
FAX: 800-643-0097 or 870-236-3934

P.O. Box 819 Paragould, Arkansas 72451 USA
www.alleneng.com