

# Your wallpaper

EVERYTHING YOU NEED TO KNOW

## THE MATERIAL

*High quality satin finish*

We have chosen a very high quality wallpaper for our customers - PVC-free and FSC certified! It features a satin finish making your chosen designs vibrant and easy to apply! This material is 'paste the wall' wallpaper... more about the application later:)



## HANDMADE!!

*Especially for you!*

Each wallpaper strip is printed especially for you and curated by hand! We don't process the material through several machines or warehouses. Our interior designer looks after your project from start to finish. As we keep our product handmade you might at occasion see some light imperfections especially with the cut edges of the wallpaper, despite our steady hands :) but don't worry it will later be cut off and will not affect the end result or the image!

## THE APPLICATION METHOD

*Overlapping*

Each wallpaper strip has been printed with an 'overlap' of the pattern from the previous wallpaper strip. That way you will get a "seamfree" wall mural and it will be easier for you to join all the panels/strips. MORE INFORMATION on the application method coming.

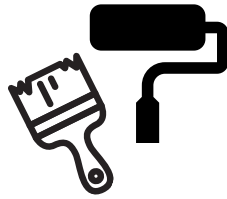


# Tools needed

Where possible we recommend the wall mural to be applied by a professional, however with the right tools and information anyone can be successful at it.



bucket of paste  
(ensure to use  
"paste the wall"  
paste)



paste roller  
or  
paste brush



Very SHARP  
snap-off  
knife



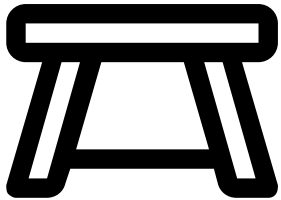
level or  
ruler



clean sponge  
and bucket  
of water +  
small towel



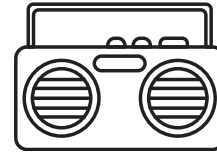
smoothing  
brush or  
plastic  
smoother



step stool



straight  
edges or  
putty knife



MUSIC!!

# Wall preparation

Remove imperfections and blemishes from the wall to achieve a smooth sound surface.

- Clean the surface with a clean sponge and warm water and then allow to dry.
- When applying to a newly plastered wall, or newly repaired wall, it is recommended to seal the walls in order to make sure all the moisture from the wallpaper paste isn't absorbed into the dry plaster

# Application

1. Lay down all of the panels in order you are going to apply them onto the wall, refer to the mural picture guide

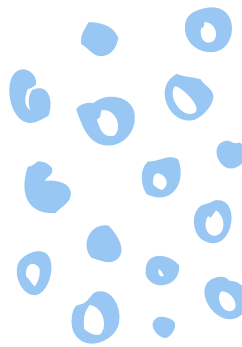


2. Each panel has been printed with a 3 cm extra overlap on the left side.



3. Paste the wall with the paste.

4. Align the panel against the wall with an extra bleed onto the ceiling.



5. Ensure the panel is straight.

6. Using your smoothing tool, smooth the panel to remove any air bubbles or excess paste. Smooth from the centre out.



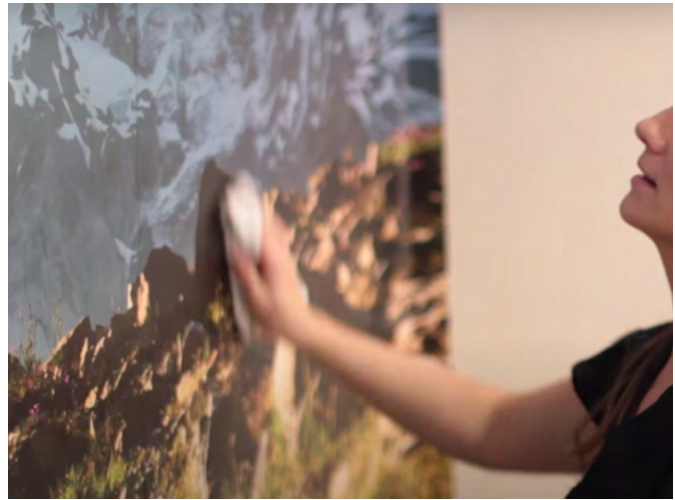


7. Paste the wall for the next panel.

8. Place the next panel and overlap the panel using the extra 3 cm overlap printed. Match the pattern.

9. Smooth out this panel in the same method (from the centre out).

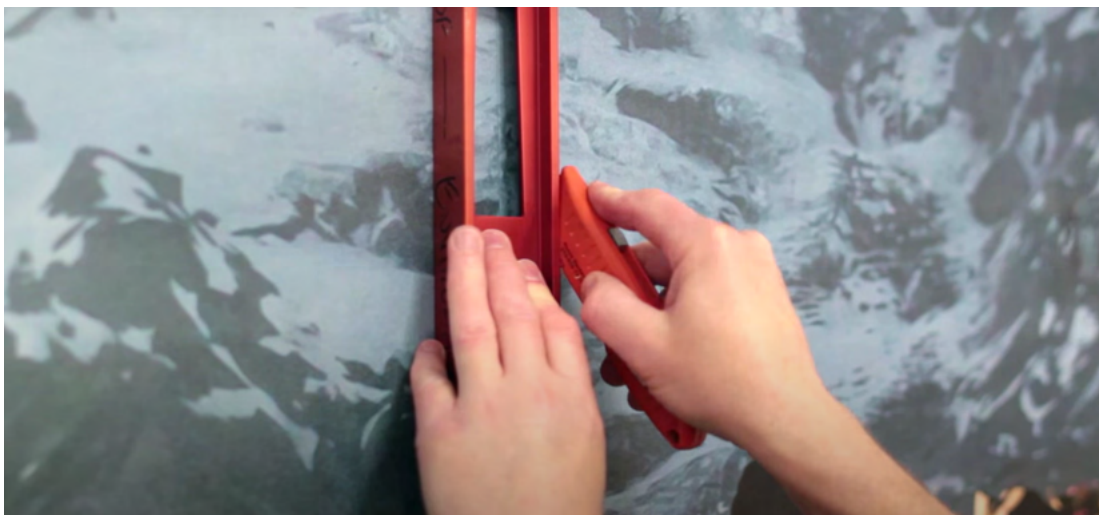
10. Remove the excess paste from the wallpaper using damp sponge and dry it using soft clean cloth.



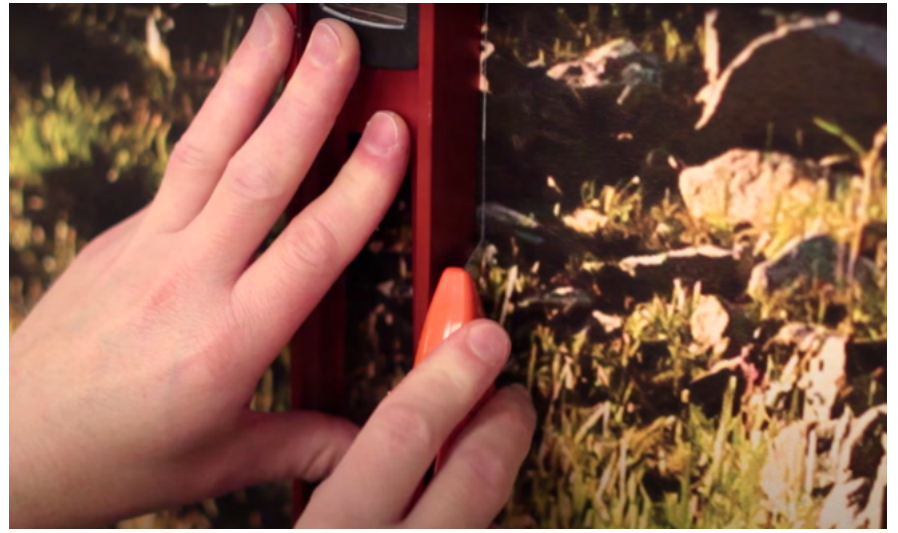
Apply the remaining panels using the same technique. Each panel has been printed with a 3 cm overlap and it can be double cut.

## Double cutting the overlap

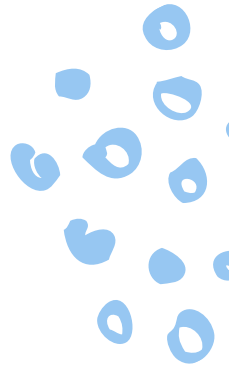
1. Place your straight edge vertically in the centre of the overlap.



2. Carefully cut through both layers of the material. PLEASE NOTE to use very sharp blade, snap off the blade after cutting each panel. Make long cuts without lifting the blade.



3. Peel the outer layer of the material.



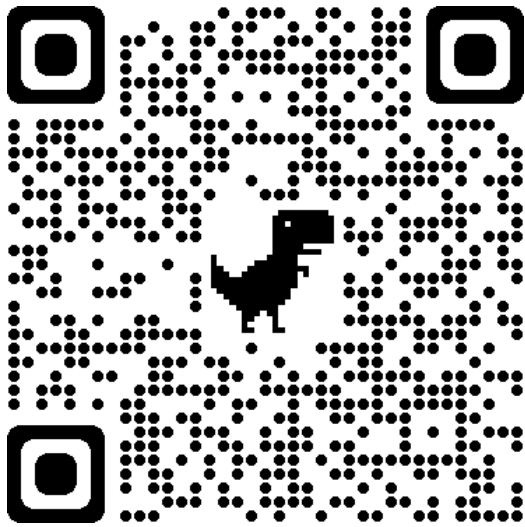
4. Next, peel back the overlap and remove the excess material on the wall.



5. Now smooth the panels using smoothing tool or smoothing roller so the panels fully join.

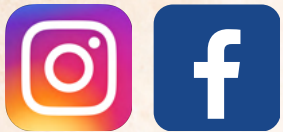


6. Finish off by trimming any excess material using fresh blade. Smooth the wall and remove any paste excess with sponge and clean cloth.



Scan the code to watch a video!

We want all our customers to receive an outstanding customer service, so if you've got any questions just pop us an email at [info@mimainteriors.co.uk](mailto:info@mimainteriors.co.uk)



[@mimainteriors.co.uk](https://www.instagram.com/mimainteriors)

Where to find us:

