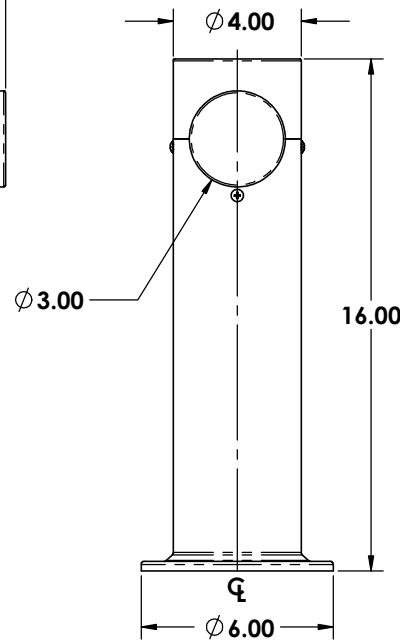
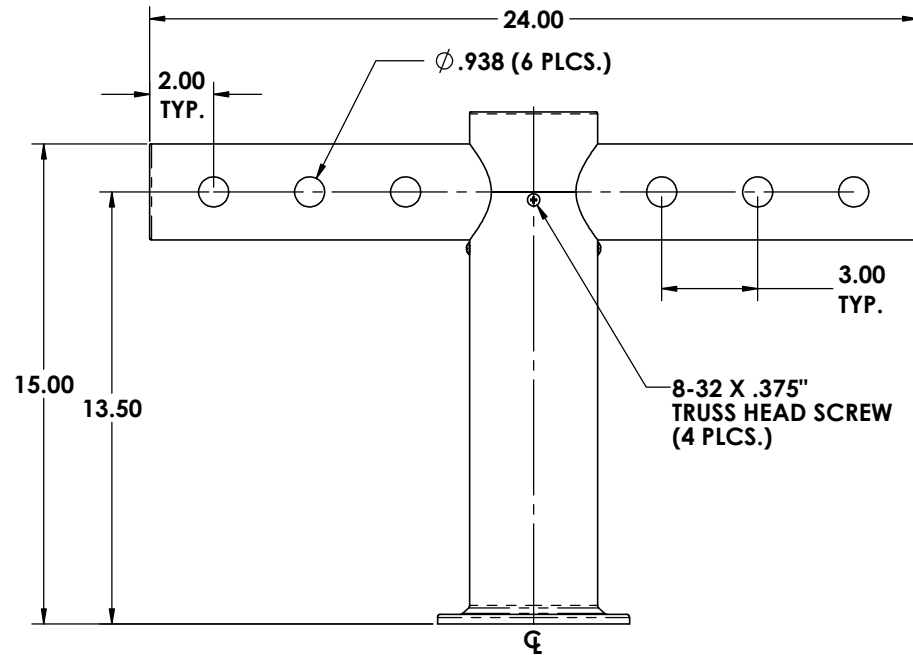
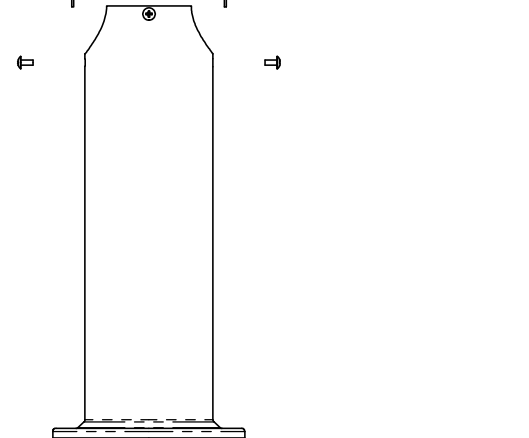
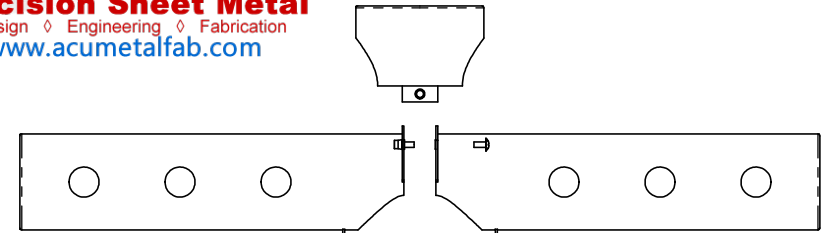
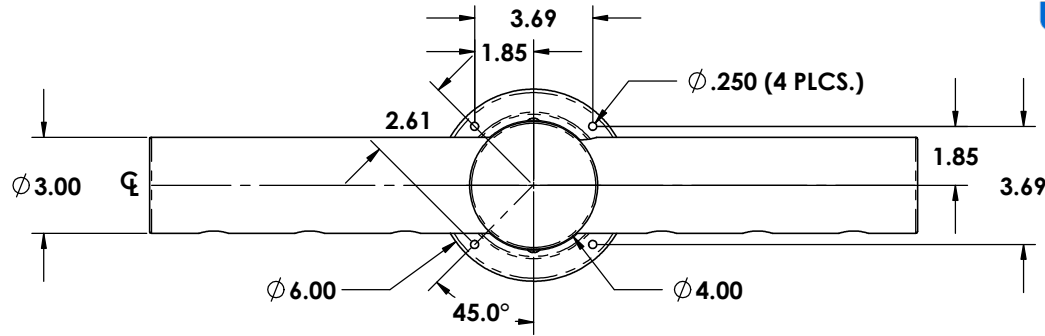
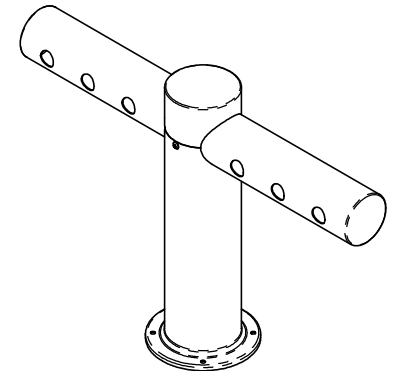


ZONE		REV.	REVISIONS	DATE	APPROVED
			DESCRIPTION		



1/4" NEOPRENE GASKET



**MATERIAL :**

3" X .060 WALL STAINLESS STEEL TUBING - CROSS TUBE  
 4" X .060 WALL STAINLESS STEEL TUBING - PEDESTAL

**FINISHES :**

#8 POLISHED ON ALL TYPES

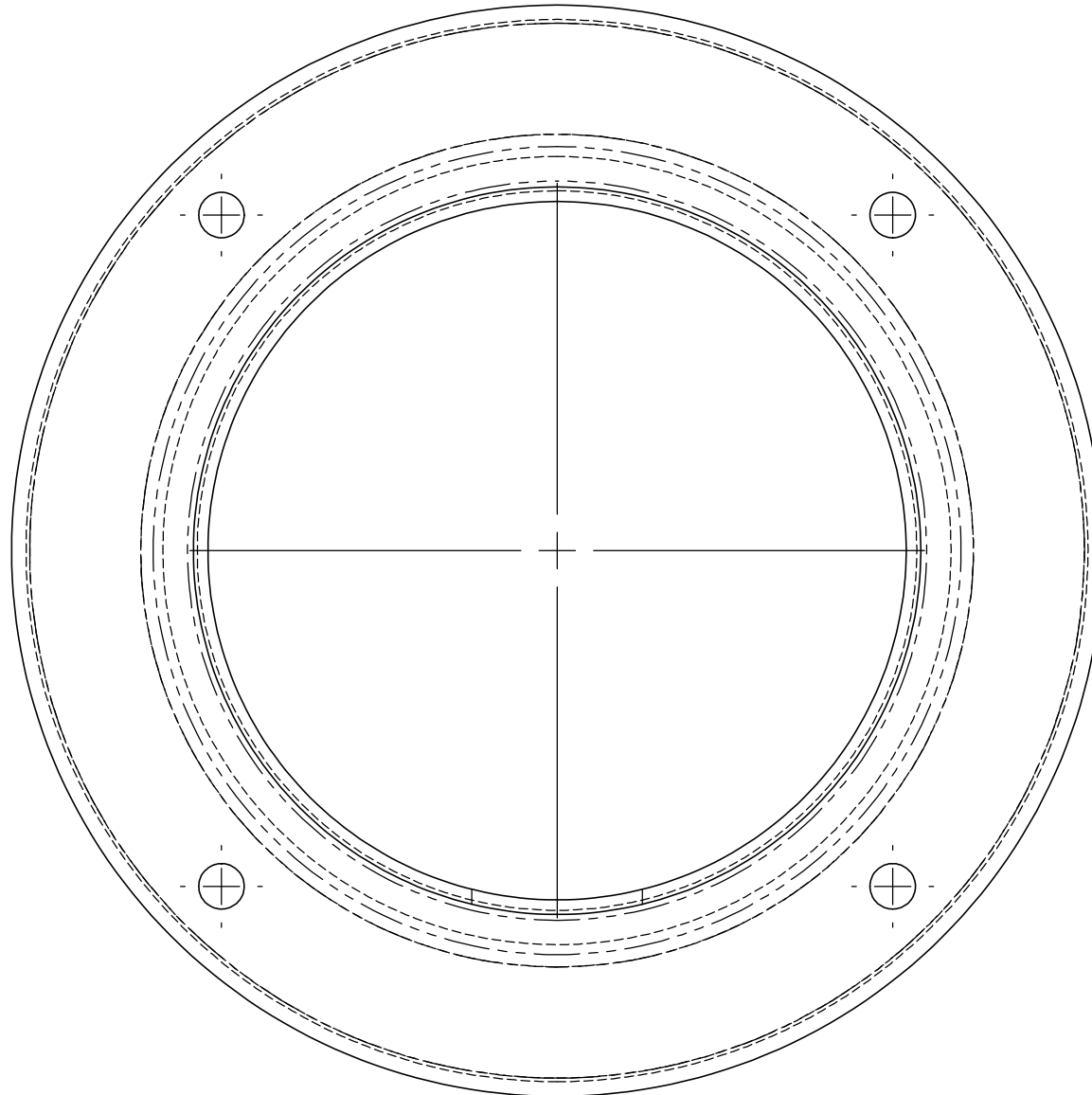
**Part # 81025-T24**

**Proprietary and Confidential**  
 The Information contained in this drawing is the sole property of ACU Precision Sheet Metal. Any reproduction in part or as a whole without the written permission of ACU Precision Sheet Metal is Prohibited.  
 ACU Precision Sheet Metal is:  
 American Coffee Urn Manufacturing Co., Inc.

	NAME	DATE
DRAWN	M. Johs	07/14
MATERIAL	SEE NOTES	
FINISH	SEE NOTES	COMMENTS:

TITLE:
<b>METRO TEE TOWER 6 HOLE, 24" TEE TOWER</b>
<b>AMERICAN COFFEE URN</b>

# 4" PEDESTAL AND DRAFT ARM TEMPLATE



**SCALE 1:1**

**Set printer settings to : Page Scaling = "None"**