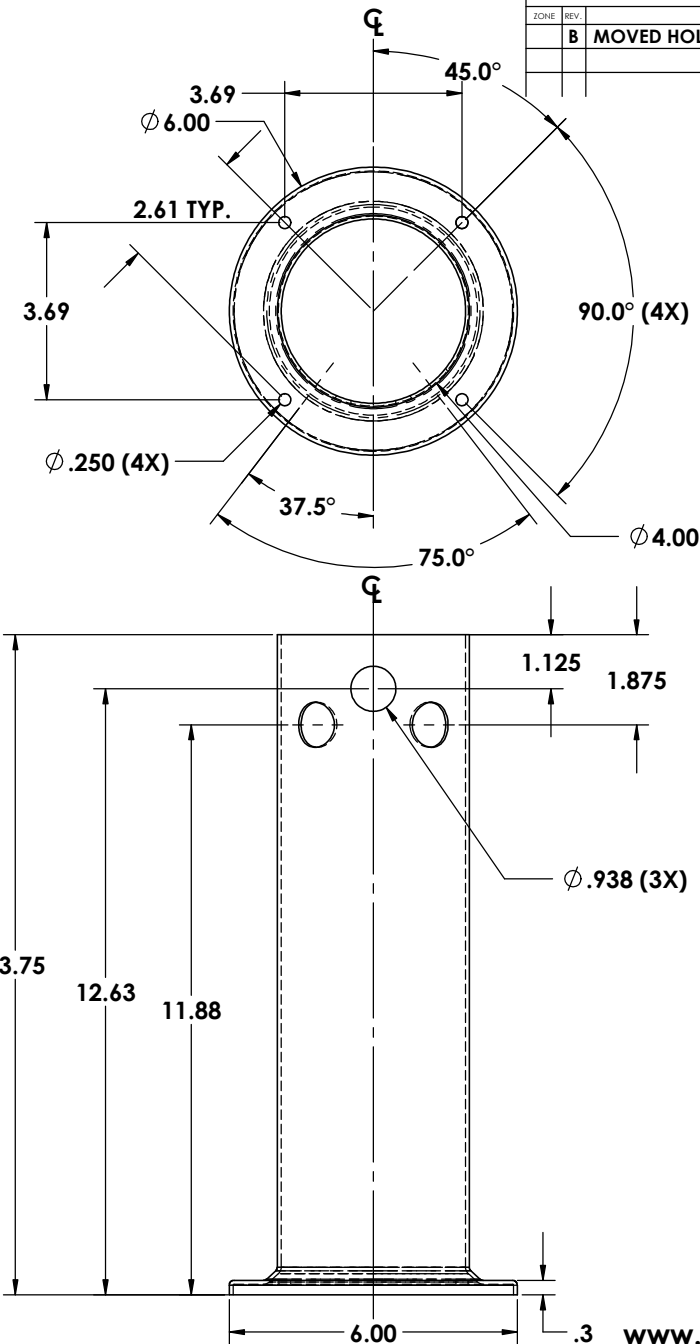


**MATERIAL :**  
 4" X .060 WALL STAINLESS STEEL

**FINISHES :**  
 #4 BRUSHED ON ALL TYPES



REVISIONS			DATE
ZONE	REV.	DESCRIPTION	
B	1	MOVED HOLES DOWN 3/16"	04/2012

**Part # 0843**

**Proprietary and Confidential**  
 The Information contained in this drawing is the sole property of ACU Precision Sheet Metal. Any reproduction in part or as a whole without the written permission of ACU Precision Sheet Metal is Prohibited.  
 ACU Precision Sheet Metal is:  
 American Coffee Urn Manufacturing Co., Inc.

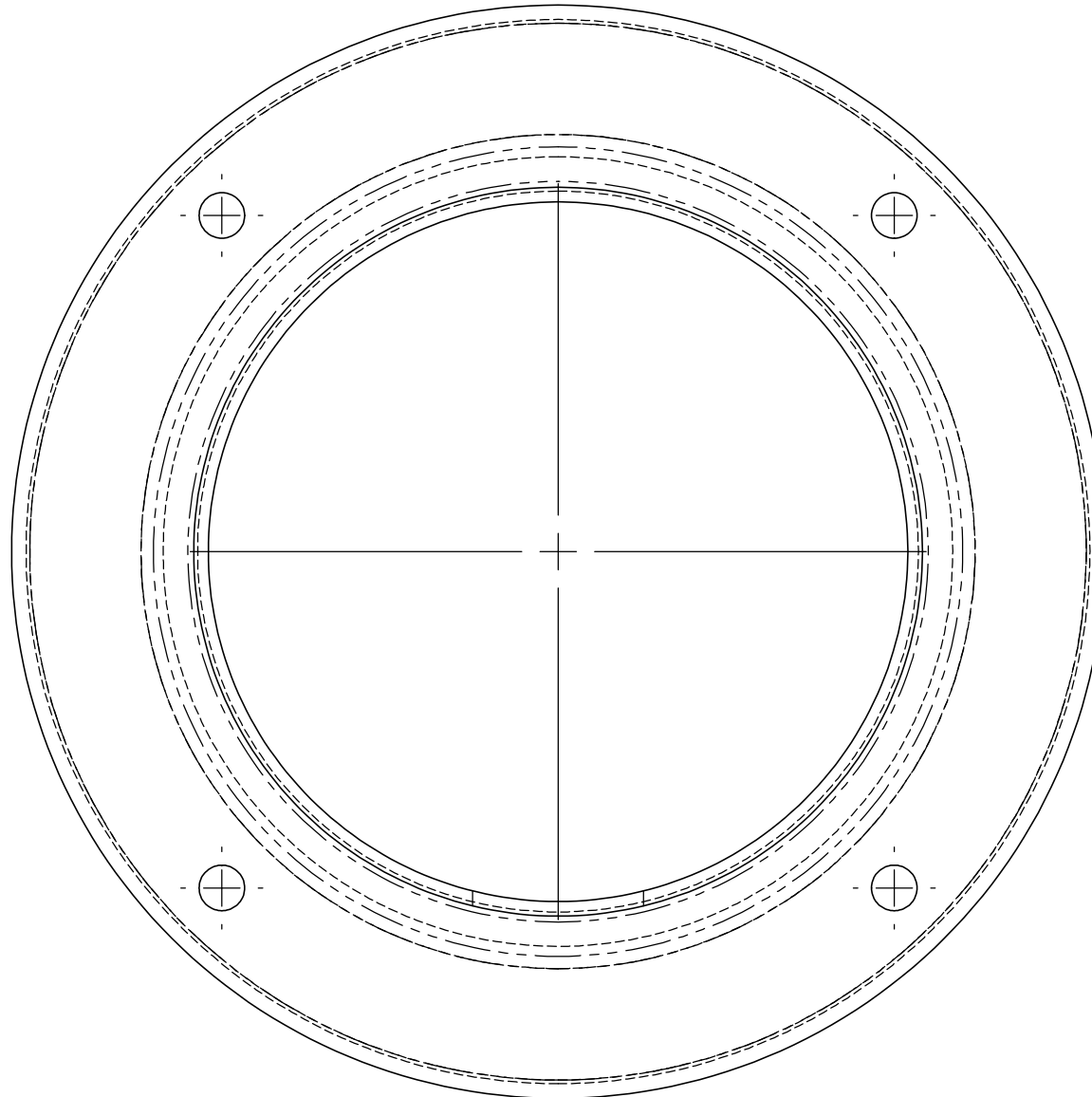
	NAME	DATE
DRAWN	M. Johs	06/14
MATERIAL	SEE NOTES	
FINISH	SEE NOTES	COMMENTS:

TITLE:	4" DRAFT ARM ASSEMBLY 3 HOLE	
	AMERICAN COFFEE URN	

DO NOT SCALE DRAWING

[www.acumetalfab.com](http://www.acumetalfab.com)

## 4" PEDESTAL AND DRAFT ARM TEMPLATE



**SCALE 1:1**

**Set printer settings to : Page Scaling = "None"**