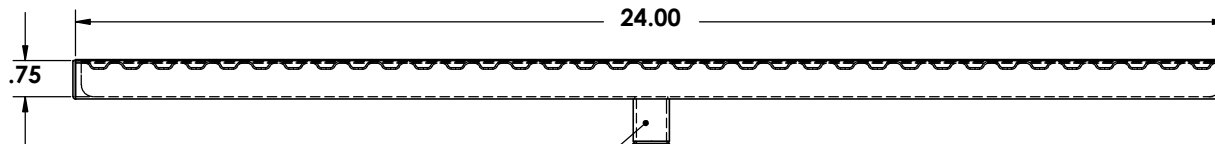
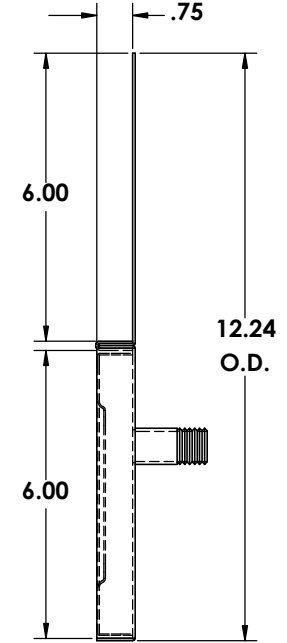
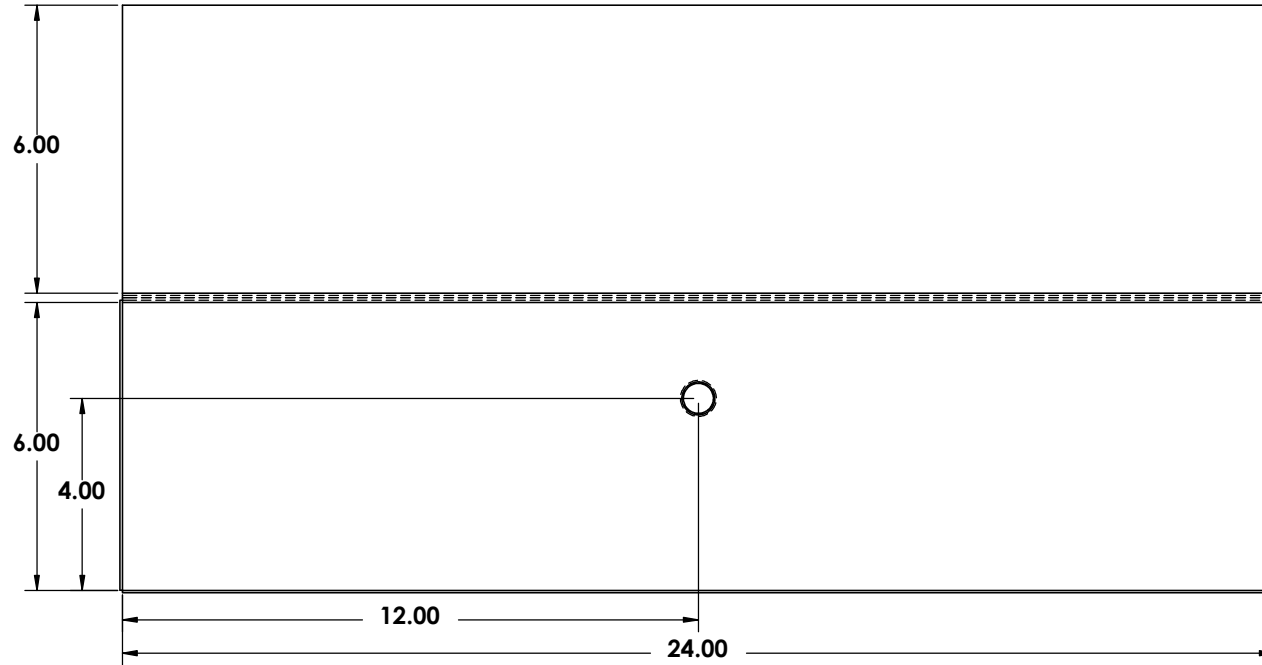


PLEASE FILL IN CORRECT MEASUREMENTS WHERE NEEDED!

ZONE		REV.	DESCRIPTION	DATE	APPROVED



1/2" X 1 1/2" LONG  
NPT PIPE THREAD

Please **Circle** the desired Screen Below:

Please **Circle** the desired options Below:

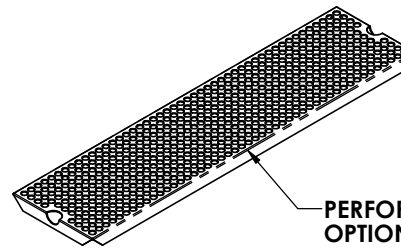
ALL DIMENSIONS ARE INSIDE DIMENSIONS  
UNLESS OTHERWISE NOTED

MATERIAL :

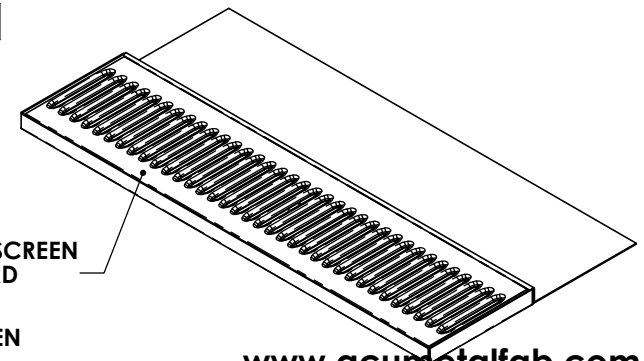
18 GAUGE STAINLESS STEEL  
16 GAUGE BRASS

FINISHES :

#4 BRUSHED ON ALL TYPES  
#8 POLISHED ON ALL TYPES



PERFORATED SCREEN  
OPTIONAL



LOUVER SCREEN  
STANDARD

[www.acumetalfab.com](http://www.acumetalfab.com)

**Proprietary and Confidential**  
 The Information contained in this drawing is the sole property of ACU Precision Sheet Metal. Any reproduction in part or as a whole without the written permission of ACU Precision Sheet Metal is Prohibited.  
 ACU Precision Sheet Metal is:  
 American Coffee Urn Manufacturing Co., Inc.

	NAME	DATE
DRAWN	M. Johs	07/14
MATERIAL	SEE NOTES	
FINISH	SEE NOTES	COMMENTS:

TITLE:
SMALL STANDARD UNDERHANG DRIP TRAY CUSTOM
AMERICAN COFFEE URN