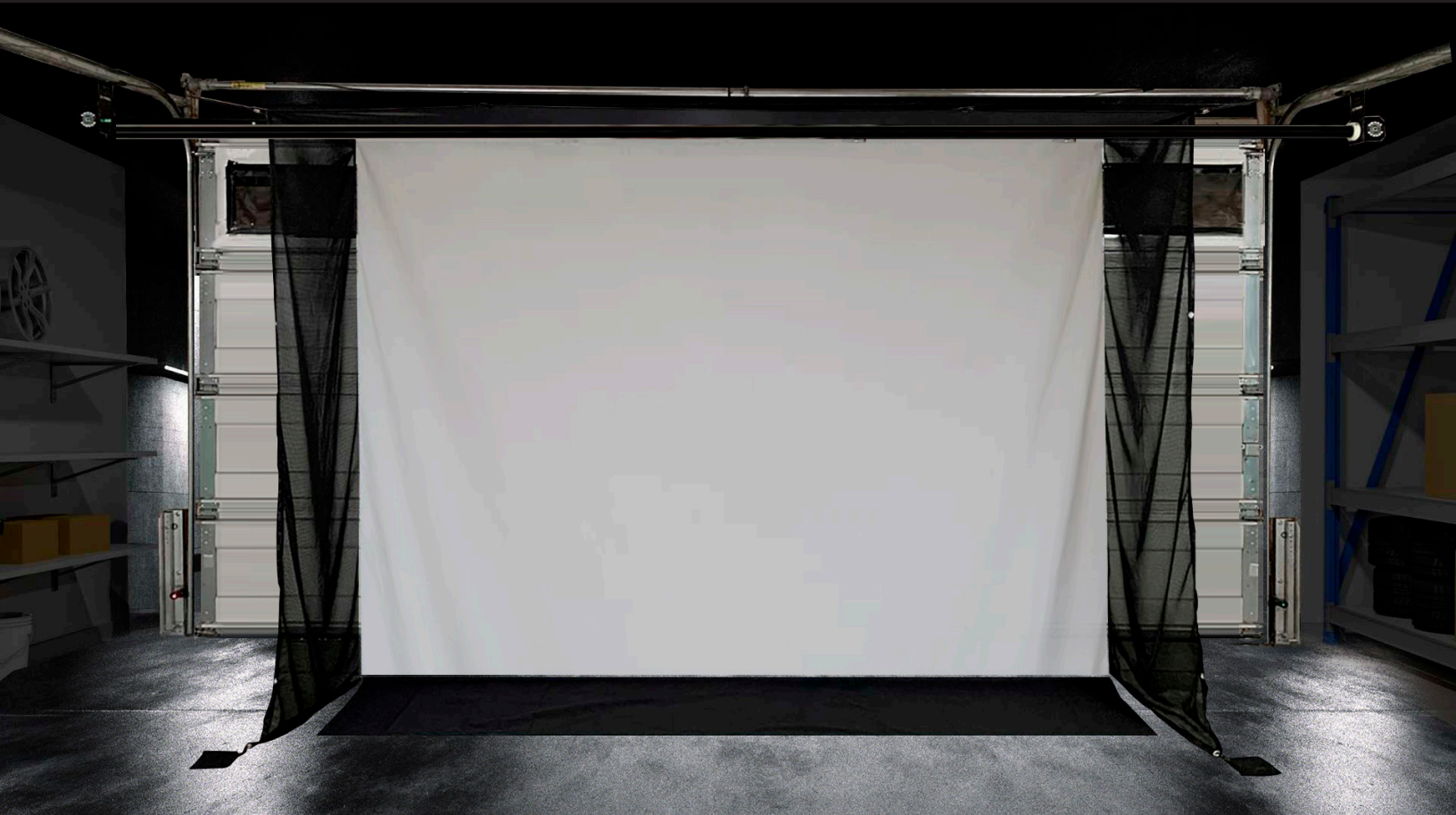


G-TRAK

ASSEMBLY GUIDE FOR GARAGE INSTALLATION



**Industrial
Strength**



**Commercial
Grade**



**Remote
Controlled**



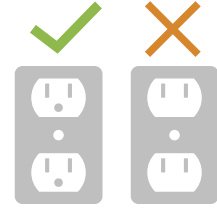
**Retractable Golf &
Sports Impact Screen**

G-TRAK USPN 10,857,444 B1

SUPPLIES NEEDED

- Marker/Pencil
- 7/16" Wrench
- 1/2" Wrench
- Crescent Wrench/Pliers
- Flat Head Screwdriver
- Scissors
- Tape Measure
- Ladder/Step Stool
- Hammer
- Standard Drill

WARNING

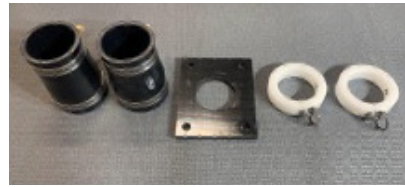


110 Volt Grounded
Power Supply Only

DIRECTIONS & INSTALLATION

[Shown with left side tube motor installation.
Reverse Steps 1-3 for right side application.]

1. ASSEMBLE TOP DRIVE



- Outer Drive Tubes (2)
- Center Drive Pipe with Assembled Center Screen Collars (1)
- Reducer Clamps w/Worm Gear Clasps (2)
- Bearing Plate (1)
- Assembled Outer Screen Collars (2)

A. Secure both reducer clamps on each end of center drive pipe.



a. Lay center drive pipe on floor with set screws facing up and D-rings facing down on the center screen collars

B. Insert outer black tube with drive holes towards the outside into the left side of center drive pipe leaving about 48" outside of pipe.



- C. Slide one outer screen collar with the set screw facing forward and D-Ring facing down.
NOTE: Depending on the system you purchased the screen collar may be on the inside or outside of the drive hole that retracts your screen. This can be adjusted on Step 7 when hanging the screen.



- D. Slide the other black outer drive tube into the right side of the center drive pipe with drive hole inside.
 E. Slide the other outer screen collar onto the outer drive tube about 12" from the center drive pipe. **(Do Not tighten down outer sides of reducer clamps yet)**



2. PROGRAMMING & INSTALLING TUBE MOTOR:



- Tube Motor with Drive Coupling
- 5/16" x 2 1/2" hex bolt
- 5/16" Lock Washer
- 5/16" Hex Nut

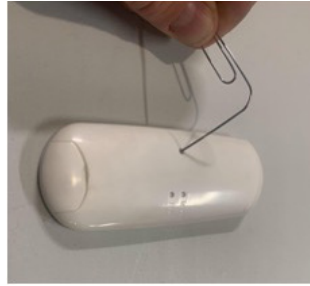
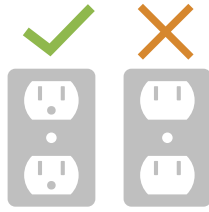


- OEM Remote Control

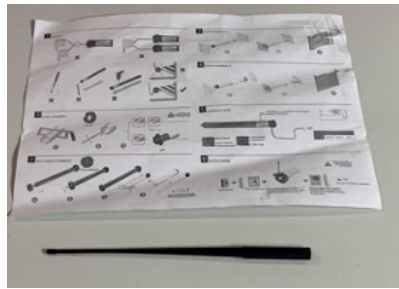
Take out the remote for your tube motor and install the battery.
(Plus side of battery facing you)



- b. Plug your tube motor power cord into the grounded wall or ceiling receptacle of your choice. Then, immediately and lightly tap the rubber (p2) button on the back side twice with a paperclip or pen tip within 10 seconds of plugging it in. **(DO NOT USE A NEEDLE)**



- c. On the front side, press the **UP** button for a full revolution.
d. Press the **DOWN** button for a full revolution.
e. Your system is programmed!

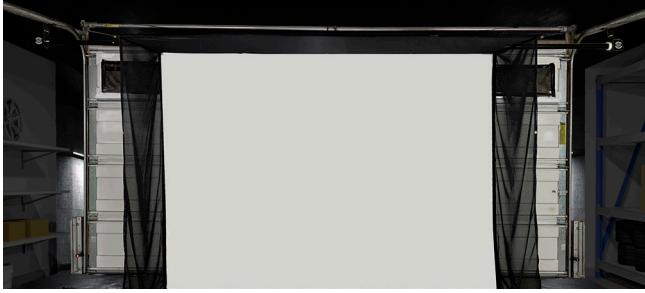


Fine tune adjustment tool and instructions packaged with tube motor if needed.

- f. Insert tube motor into left side outer drive tube and rotate to line up drive coupling with drive hole.
g. Once it is lined up, insert 5/16" x 2 1/2" Hex Bolt and add 5/15" lock washer and 5/16" hex nut on the thread side. Snug up the hex nut until lock washer flattens out **(DO NOT TIGHTEN DOWN HARD)**

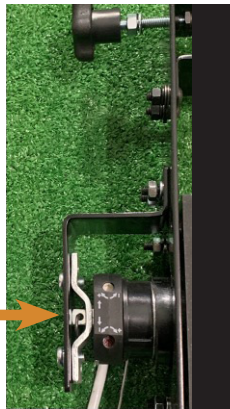


3. ATTACH G-TRAK BRACKETS TO TOP DRIVE:

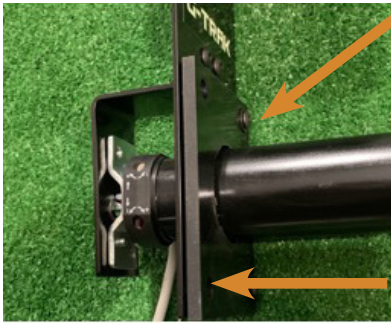


- Left side bracket pre-assembled (1)
- Right side bracket pre-assembled (1)
- Leftside logo shield (1)
- Hairpin/cotter pin (1)
- ¼" x 1" black oxide set screws (4)
- ¼" black oxide flat washers (4)
- 5/32 Allen wrench
- Shaft collars (2)
- 2" cap/plug (1)

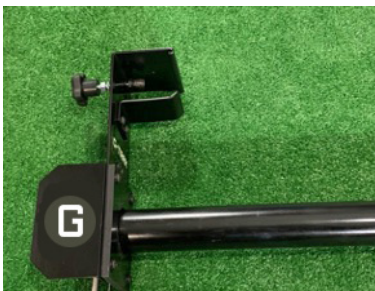
- A. Slide left side bracket over tube motor and through DEM star bracket.
- B. Clip hairpin/cotter pin through hole security tube motor to left side bracket.



- C. Tighten down motor rotation lock.
- D. Slide bearing plate to left side bracket using ¼" x 1" black oxide screw and ¼" washer slide through front of bracket. Then use a ¼" lock washer and ¼" hex nut on the backside and tighten down.



- E. Repeat on the front side but add a logo shield as seen in the picture.



F. On right side, slide one shaft collar over end of right side outer tube about 6”.



G. Insert 2” cap/plus and push on. May need to tap with a hammer.



- H. Slide the right side bracket over the tube and then slide the second shaft collar over the tube.
I. Leaving about 1” from the end, tighten down the outside shaft collar. Push the inside shaft collar toward the outside shaft collar sandwiched between the left side bracket in between both collars. Snug down the shaft collars in a staggered way to avoid flattening the tube. **(DO NOT OVER TIGHTEN)**

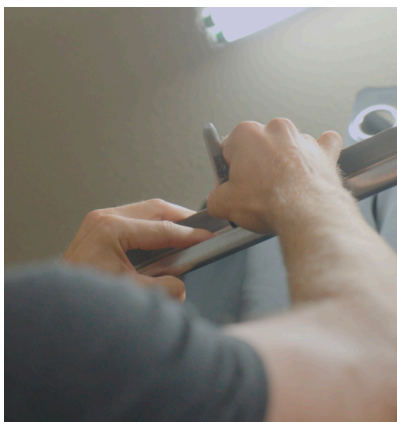


4. POSITIONING OF G-TRAK BRACKETS:

Measure from front wall (above garage door) and mark a line on the garage door tracks on both sides at 24”



MEASURE 24” FROM BACK WALL ON BOTH SIDES.



5. MOUNTING G-TRAK SYSTEM TO GARAGE DOOR TRACKS:

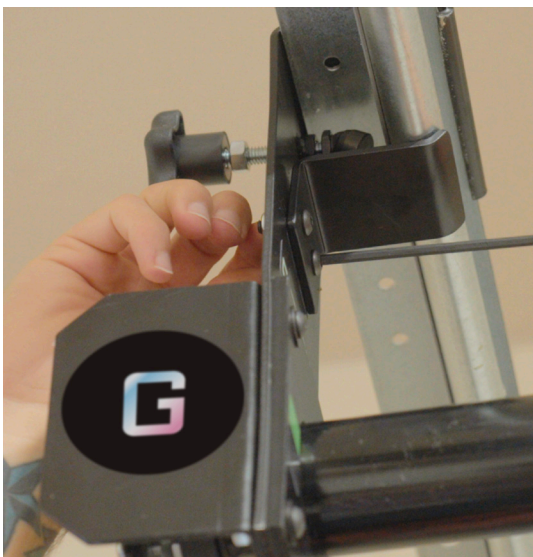
- A. Loosen up or remove the safety clamps on your G-TRAK brackets.
- B. Have a ladder or a step stool underneath your marks on both tracks and using a helper for this step walk your system over and raise up together.
- C. On the left side, raise the bracket up and around the back side of the track and hook the brackets into place. Make sure your mark on the track lines up with the back side of the bracket.



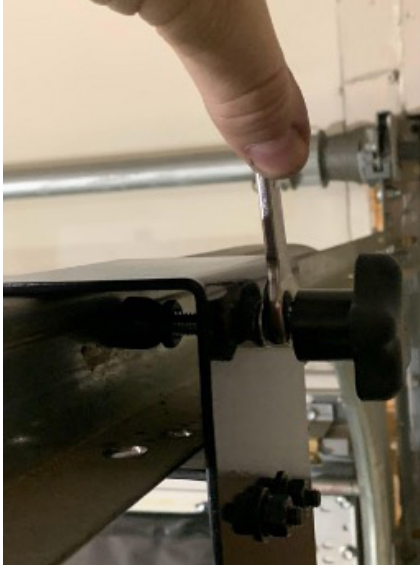
- D. Same procedure on the right side. Once the right side bracket is in place, snug up the knob bolts on each bracket on both sides. **[just enough to hold everything in place]**
- E. Slide the center drive tube so that it is centered in your G-TRAK system and the center screen collars are all in the correct position. Should have the set screw facing forward and the D-Rings facing down.



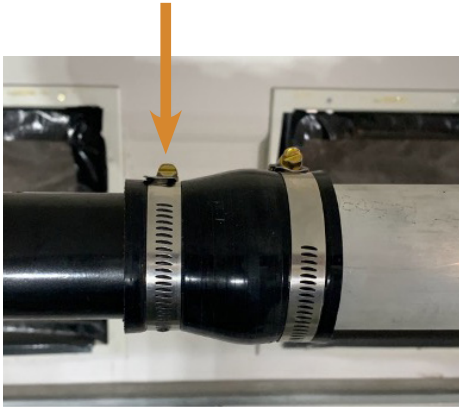
- F. Make sure the G-TRAK brackets are parallel to your floor and everything looks good.
- G. Tighten up the safety clamps on each bracket.



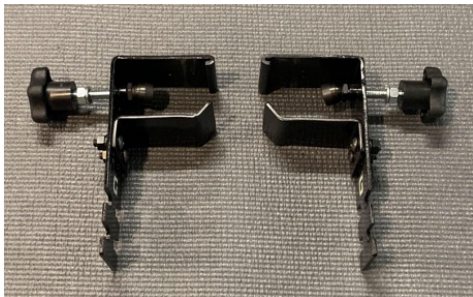
H. Tighten up the lock down the nut on the knob bolt.



I. Now that everything is lined up and in place, tighten down the outer worm gear to the outer drive tubes.



6. ATTACH BORDER TRACK BRACKETS:



- Pre-Assembled Border Track Brackets (2)

A. Measure 36"- 48" from the G-TRAK bracket and mark track on both sides.

NOTE: Attach BORDER TRACK BRACKET anywhere from 26"-48" from G-TRAK Brackets

RIGHT SIDE



B. Loosen up bolts for safety clamps

C. Slip the border track bracket over the top of the garage door track.



D. Rotate bracket and slide to your mark.



E. Slide up the safety clamp to the bottom of the garage door track and tighten down.

F. Snug up knob bolt and locking nut. Border track brackets should be perpendicular to the floor.



7. ATTACH IMPACT SCREEN



- Impact Screen (1)



- Bottom Screen (2)
- 5/16" threaded coupling (2)
- 5/16" lock washers (2)



- Cable Ties (5)



- small (2) med (2) large (2) thickness

A. Use a cable tie with the center grommet of the screen and attach with velcro facing out to the center screen collar.

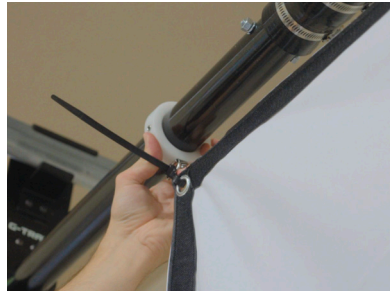


B. Moving outward attach the next 2 grommets to the center screen collars (may need to adjust collars)



NOTE: You may need to temporarily remove the drive bolt and position the screen collar on one side or the other to make the screen fit correctly. Then tighten the drive bolt back into place.

C. Slide the outer screen collars to the end of the screen. Just a bit outside of the screen and tighten down the collars.



D. Same on both sides and cut off all extra cable tie.



E. Attach foam padding to Drive Tubes.
Place the two thickest foam pads in center
Place the two medium thickness foam pads in the middle
Place the two thinnest foam pads on the outside
Then roll taped seams facing down at the screen



F. Connect bottom screen weight with 1/2" wrench



G. Slide bottom screen weight through one end of the sleeve at the bottom of the screen



8. ATTACH BORDER MESH TO IMPACT SCREEN:

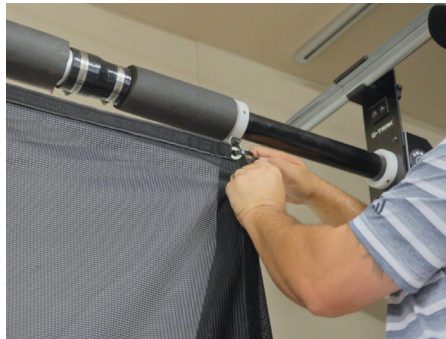


• Border Mesh (1)



• Cable Ties (2)

- A. Locate the middle section of the border mesh and line up one end grommet. Use cable tie to secure and velcro along top of screen. Use cable ties and grommets to attach on opposite side also.



- B. Fold over top and velcro on both sides.
C. Velcro down each side.



Border mesh is attached to impact screen

9. INSTALL LOWER IMPACT SCREEN STABILIZERS:



- Tie down D-Ring (2)



- Masonry Bit (1)



- Drive Nail Anchor (2)

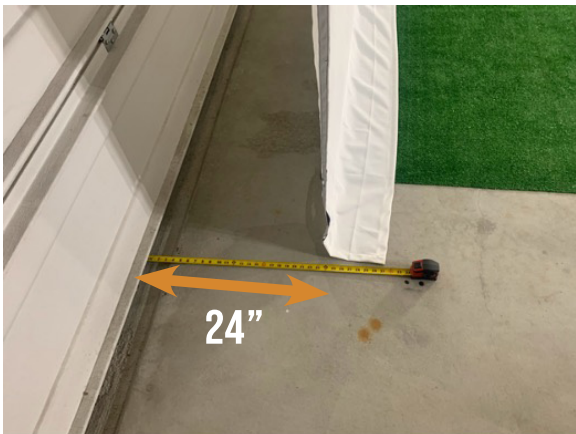


- Adhesive Disc (2)



- Vacuum Suction Cup (2)

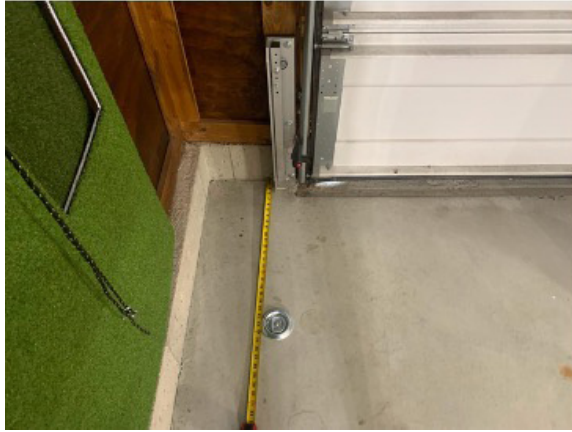
A. Measure the distance from the bottom of the screen with the screen laying parallel to the garage door or wall. (Example: screen is 24" from garage door)



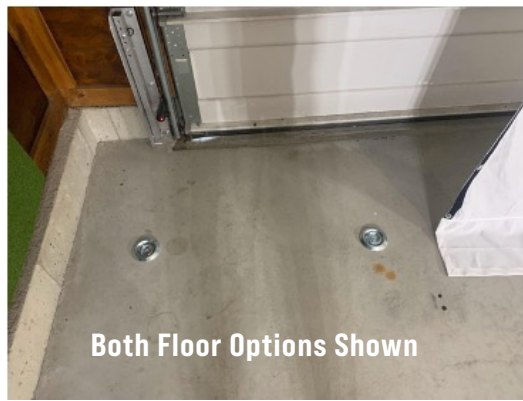
LEFT SIDE

B. Now measure that distance from the garage door or wall and mark the floor with a pencil or marker.

LEFT SIDE



The purpose of this is to mark the floor even with the garage door tracks to install out tie down D-rings. You can install your tie down D-Rings anywhere from 6" outside of the screen to just outside of your garage door tracks.



You can also mount tie down D-Rings to a side wall

C. Once you have picked the position of where you want your tie down D-Rings place your tie down D-Ring with the oval facing the screen and the flat facing out. Use a pencil or marker and trace inside the hole.



D. Remove tie down D-Ring and with a drill and masonry drill bit drill on your mark down about 2”.



E. Place the tie down D-Ring over the hole with the inside hole lining up over your new hole as pictured.



F. Using a hammer and one drive nail anchor hammer the drive nail anchor until it's down tight. Repeat on the other side.



IF YOU PREFER TO NOT DRILL INTO YOUR FLOOR WE HAVE A SUCTION CUP OPTION.

G. Clean the floor and stick adhesive discs to the floor on both sides of the screen base.



H. Attach a vacuum suction cup to both sides.



10. ATTACHING TENSION ROPES AND SAND BAGS:



• Pre-assembled tension ropes (6)



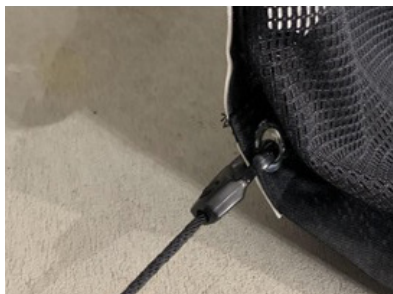
• Sand Bags (2)



• Carabiner (2)

A. Connect the shock hook to the bottom grommet of the impact screen.

LEFT SIDE



B. Connect wingless snap cord hook to tie down D-Ring or vacuum suction cup.

LEFT SIDE

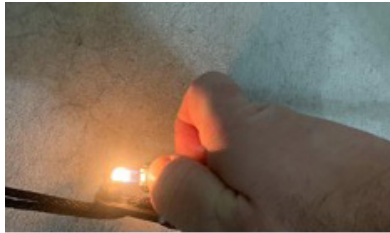


C. Pull the tensioner to the center and rope is taugt. Tie a knot at that point.

LEFT SIDE



D. Cut off extra rope. (optional: burn end of rope to keep it from wearing out)



REPEAT ON RIGHT SIDE



E. Attach wingless snap hook to top corner grommet of border mesh.

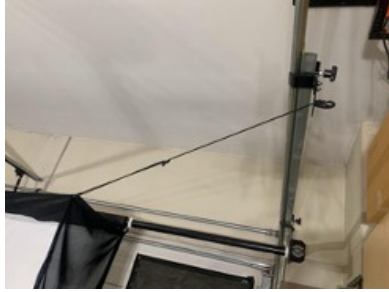
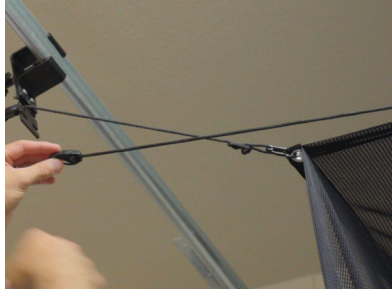
F. Slide shock hook through bottom outer slot of border track bracket

G. Slide tensioner to middle and tie knot.

RIGHT SIDE

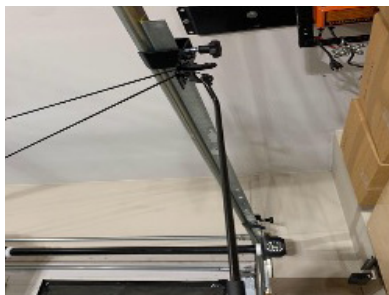


- H. Cut off extra rope and repeat on the opposite side.
- I. Same procedure for top inside grommet, except slide shock hook through top outer slot of border track bracket.



REPEAT ON RIGHT SIDE

Use the border track hook to hook and unhook

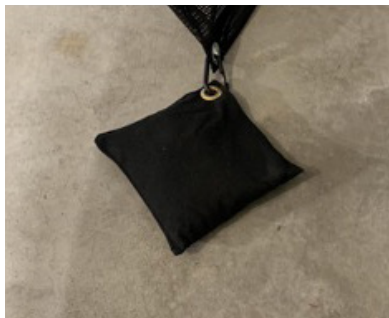


J. Fill sand bags with sand (sand not included) (can use sandwich bag as a liner)



NOTE: Or place one or two corn hole bags inside the sand bags.

K. Attach sand bags to the bottom front of the border mesh with plastic carabiner clips.



11. ATTACH LINE-UP DECALS:

- A. Attach 1st decal to the bearing plate on the tube motor side.



- B. Attach 2nd decal to outer drive tube.



STORING G-TRAK



- A. Unclip sand bags from border mesh.
- B. Unhook the bottom screen tension ropes from the tie down D-rings or suction cups.
- C. Unhook top tension ropes with the border mesh hook. Velcro the border mesh sides to the top of the border mesh.
- D. Clip the top tension ropes together.
- E. Clip the center tension ropes together.
- F. Clip the bottom screen tension ropes to the center tension ropes.

G-TRAK is ready to retract up and out of the way in storage position. Setting up is the same in reverse order.

STORING AND RETRACTING POSITIONS

Step away and push the up button on your remote control until the bottom weight is up and behind the impact screen. Then push the center stop button. Your system is secure up and out of the way



Note: when retracting the first few times keep the screen in line while rolling up. After several uses it will evenly roll up tight. (may need to hand guide it a few times)

PLAYING POSITION



STORAGE POSITION



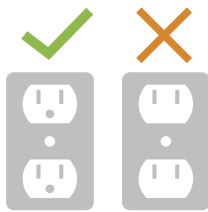
NOTE: This system is designed to work with standard garage door arm brackets. Once your system is completely installed, open the garage door and stop the garage door just before the system top tube. If clearance is good then you are all set. If it looks like the arm bracket will not clear your system then cut off the excess arm bracket with a hacksaw or grinder. This will allow for free travel

NOTE: The optimal garage door height for this system is 8ft. However, an older style 7ft high garage door will work, except it will have a smaller screen surface. Another option for 7ft high garage doors is to just swap out the 76 inch vertical tracks for 88 inch vertical tracks and you will achieve the intended height and screen surface.

WARNING: This system is intended for golf ball impact only and only intended for provided materials.

- Do not hang from or hang items from this system that were not supplied for this system.
- Make sure all people and objects are clear when using this system.
- Place the golf mat in an area that will allow you to safely hit screen.
- Use at your own risk, not responsible for injuries or damage.

WARNING



**Use 110 Volt
Grounded Outlet/Circuit**