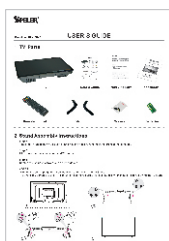


# USER'S GUIDE

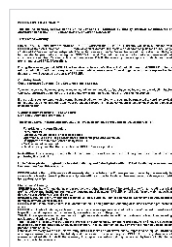
## 1. TV Parts



TV



User's Guide



Warranty Card



User manual



Remote Control



Stand



Screws



Batteries

## 2. Stand Assembly Instructions

Your TV may be packaged with the Stand and the Cabinet separated. Before enjoying this TV, please carry out the Stand Installation according to the instructions below.

### Step 1

Place the TV faced down on a soft cloth or cushion to prevent the panel from being damaged.

### Step 2

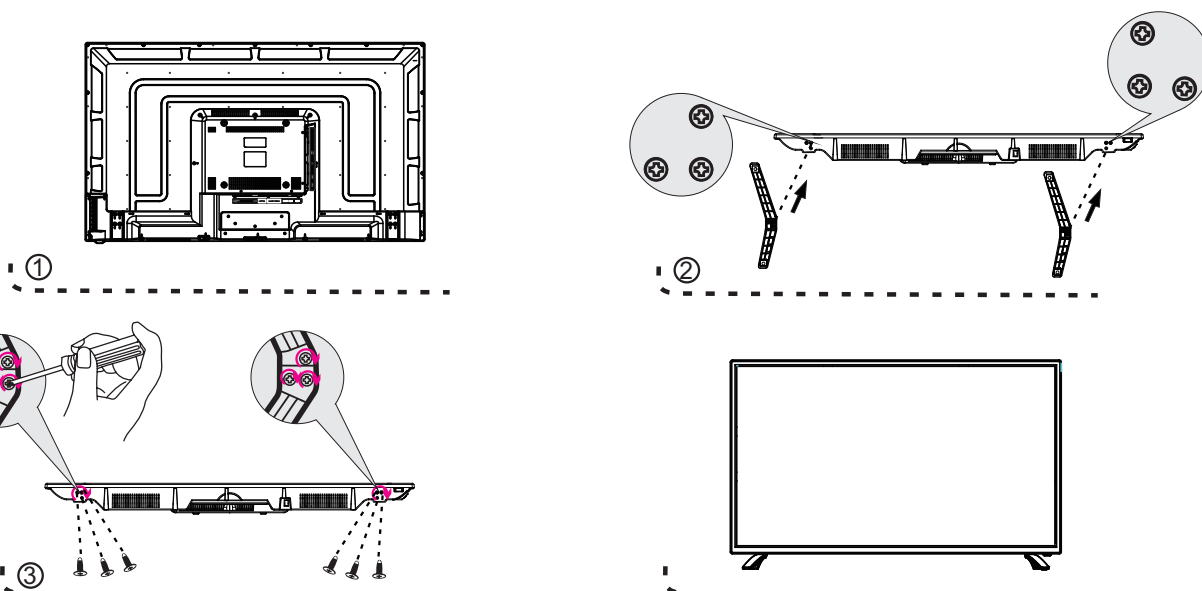
Align the screw holes on stand and TV bottom.

### Step 3

Tighten the included screws with a screw driver.

### NOTES:

- 1) Unplug the power plug first when installing or removing the TV Stand.
- 2) To avoid any damage to this TV, contact one or more partner for assistance when installing or removing the TV stand.



### 3. Remote Control Batteries Installation

Fig1

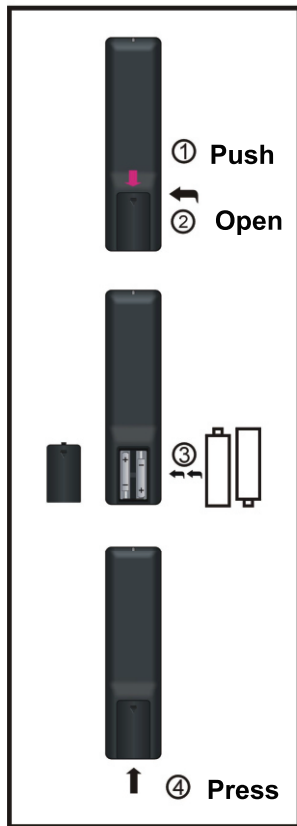
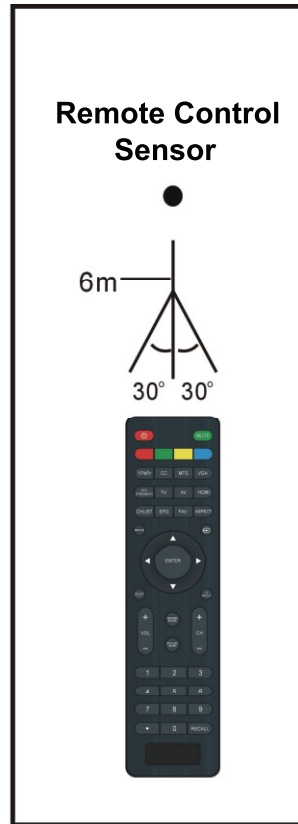


Fig2



### 4. Quick Start

#### 1) Connecting to AC power source



Plug into a wall socket

#### 2) Power ON



Press key "POWER" on the remote control or key "POWER" on the back of the TV to turn on (Blue indicator)

### 3) First time installation

If this is your first time turning on this TV, Setup Wizard will appear on the screen.

- Press UP or DOWN navigation button to select preferred item.
- Press RIGHT navigation button or ENTER button to enter next menu page.
- Press LEFT or RIGHT navigation button to adjust the value.

#### NOTES:

- In Setup Wizard, the users can adjust Menu Language, Time Zone, Daylight Saving Time, Time Format and Air / Cable.
- If Air / Cable item has been selected, press UP or DOWN navigation button to select Go to next step in the menu and then press RIGHT navigation button or ENTER button to start auto channel searching.
- Press MENU or EXIT button to exit auto channel searching.

