

READ INSTRUCTIONS CAREFULLY BEFORE USE. KEEP FOR FUTURE REFERENCE.

WARNING: This product is only suitable for a child who cannot sit unaided, roll over and cannot push themselves up on their hands or knees. Maximum weight of the child 9kg.

WARNING: Only use on a dry, firm and flat surface.

WARNING: Do not let other children play unattended near the Moses Basket.

WARNING: Do not use if any part of the Moses Basket is broken, torn or missing.

WARNING: Do not leave flexible carrying handles inside the Moses Basket.

WARNING: When the mattress is in use, ensure the mattress cover opening is facing down, away from the baby.

WARNING: Do not carry the Moses Basket while your baby is inside.

Only use replacement parts supplied or approved by the manufacturer.

Do not place the Moses Basket near an open fire or other source of strong heat.

Do not add another mattress on top of the mattress provided.

If a mattress is purchased separately, the dimensions for a proper fit are: 74 x 28 x 3 cm.

The handles and base of the Moses Basket should be inspected regularly for signs of damage and wear.

If the Moses Basket is intended for use with a stand, it must be checked that it is of the appropriate size to accommodate the base of the Moses Basket.

Before carrying or lifting, make sure that the handles are in the correct position of use.

When the stand is not in use it should be stored away from children.

BASKET: Sponge lightly with warm water and mild detergent.

MATTRESS: Removable cover can be washed at 40°C.

DRESSING: See care label on product.

Dispose of all packaging safely before use.

Complies with BS EN 1466: 2023

Please assemble with a hand held screwdriver and not a cordless drill as this can lead to over tightening of the screws.

PALM MOSES BASKET HOOD ASSEMBLY Instructions



PALM MOSES BASKET HOOD ASSEMBLY

Instructions

Components and fittings:

Please check that you have the fittings shown below. Please note: The quantities below are the correct amount to complete the assembly.



Screws x 2



Washers x 2



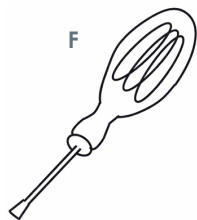
Wing Nuts x 2



Nyloc Nuts x 2



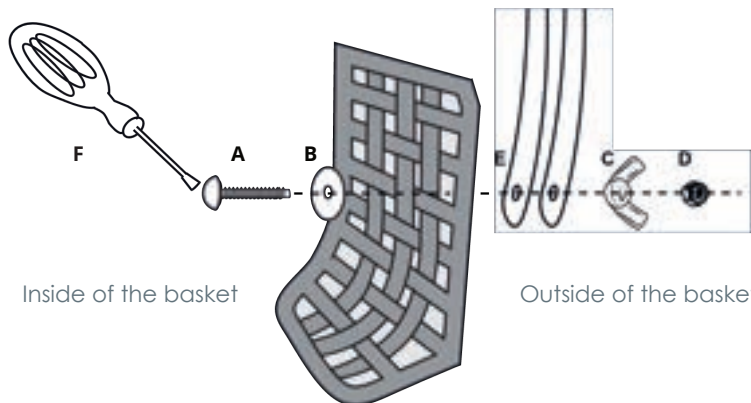
2 x Hood Runners
with attached hood



1 x Flat head screwdriver
(not included)

Position of Components:

Please note: For safe keeping, the hood fittings and fixtures are stored in the back of the mattress.

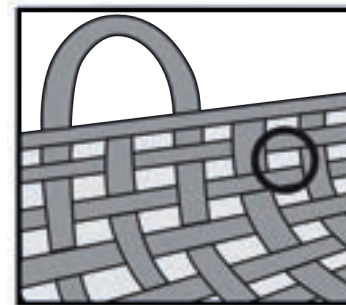


Inside of the basket

Outside of the basket

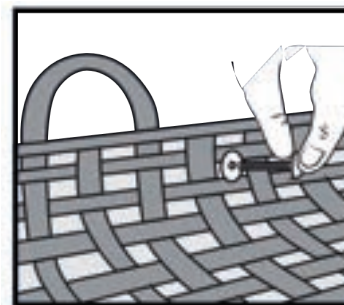
STEP 1

Find the existing holes in both sides of your Palm Moses Basket.



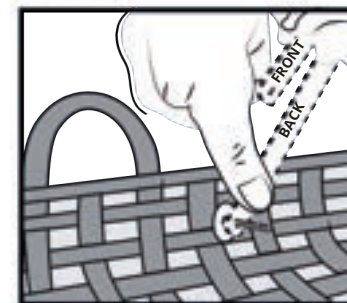
STEP 2

Insert a screw and a washer through the hole from the inside of the basket.



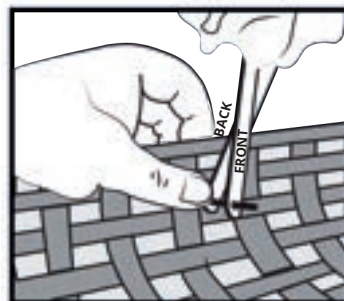
STEP 3

Having located the screw with the washer attached from the inside of the basket, now attach the BACK runner E.



STEP 4

Then attaching the FRONT runner on top of the BACK runner. It is essential that the BACK runner is attached first, followed by the front.

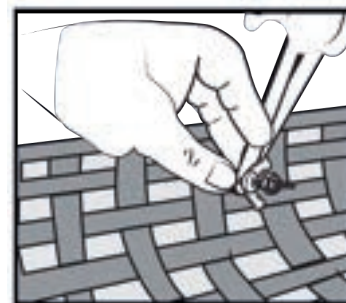


STEP 5

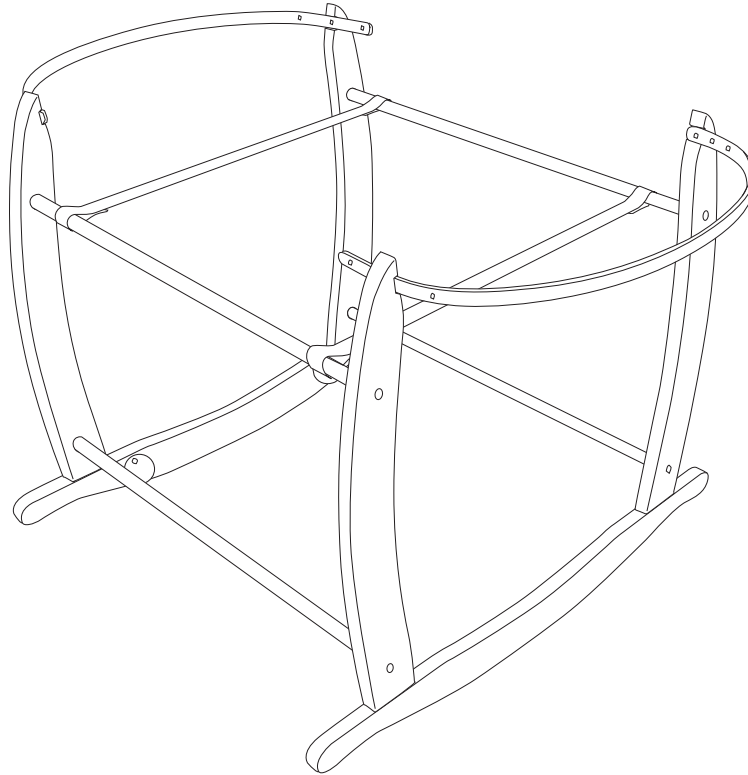
Attach the Wing nut and the locking Nyloc nut. The locking Nyloc nut should be tightened with a pair of pliers so that it locks and cannot be undone using finger pressure.



1 x (C) 1 x (D)



Please note: if the hood of the Moses Basket does not stay upright, tighten the wing nut slightly. The Nyloc nut is used for extra security to keep the wing nut in place. Repeat process 1 to 5 to attach hood to the other side of the palm basket.



IMPORTANT - PLEASE READ THE INSTRUCTIONS CAREFULLY BEFORE USE AND KEEP FOR FUTURE REFERENCE. IN ORDER THAT THE STAND YOU HAVE PURCHASED MAY BE SAFELY USED THE FOLLOWING INSTRUCTIONS MUST BE FOLLOWED. WARNING: KEEP THE PLASTIC BAG AWAY FROM CHILDREN TO AVOID SUFFOCATION.

This product is suitable only for a child who cannot sit up unaided, roll over and cannot push itself up on its hands and knees.
Maximum weight of the child: 9 kg.

WARNING: Only use on firm ground which is horizontal, level and dry.

WARNING: Do not let other children play unattended near the Moses basket and stand.

WARNING: Do not use if any part of the stand is broken, torn or missing.

WARNING: Do not attach anything to the stand, which may affect its stability.

Only use replacement parts supplied or approved by the manufacturer.

Do not place the stand near an open fire or other source of strong heat.

When the stand is not in use, it should be stored away from children.

If the mattress is purchased separately, it should fit well into the product and the depth from the top of the side of the product should be less than 170mm (200mm if to be used with a stand) when the mattress is in position of use.

The stand is designed for use with a palm or wicker Moses basket of min/max 700-835mm in length and 300-370mm in width.

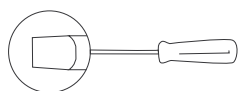
Do not add another mattress on top of the mattress provided or recommended by Clair de Lune.

CLEANING INSTRUCTIONS

Stand - If necessary, wipe with damp cloth

Dispose of all packaging safely before use.
Complies with BS EN 1466: 2023

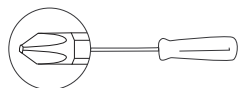
Tools Required



Flathead screwdriver



Pozidriv®



Phillips head screwdriver
Size 2 (PH2)



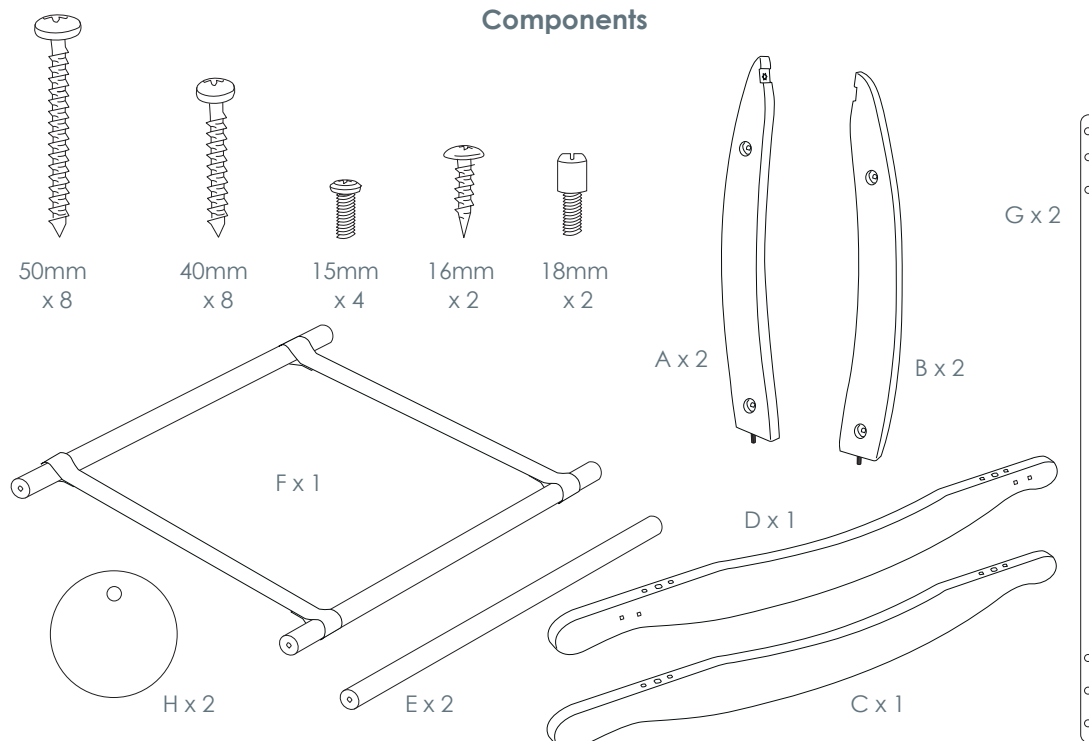
Phillips

To prevent damaging the screws during assembly, please ensure you use the right size and type of screwdriver.

Please assemble with a hand held screwdriver and not a cordless drill as this can lead to over tightening of the screws.

IMPORTANT - Please make sure when assembling the stand that the pre-drilled guide holes in each component are lined up and that the screws are located carefully into the holes before tightening them up.

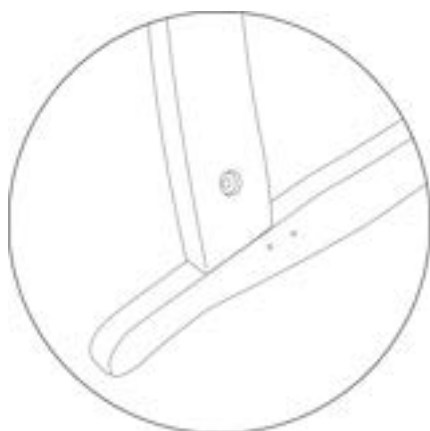
Components



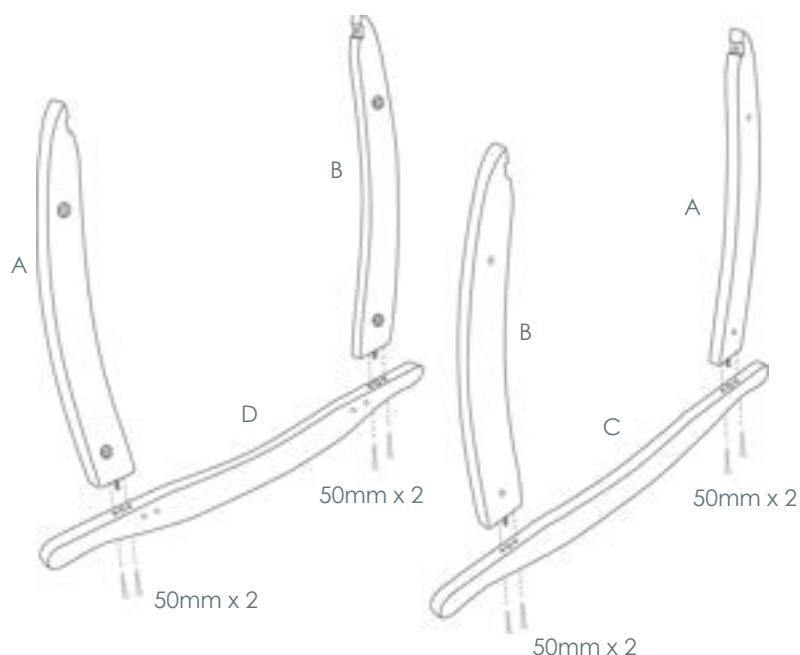
Step 1

Note: The uprights A and B should curve inwards towards each other with the larger recessed dowel holes facing the same way.

1. Using 4 x 50mm screws, fasten 1 x A and 1 x B uprights to 1 x base rocker C through the holes in the base of C. The pre-inserted dowel in A and B will slot into the middle of the 3 holes in C.
2. Repeat with the second set of parts A, B and D.

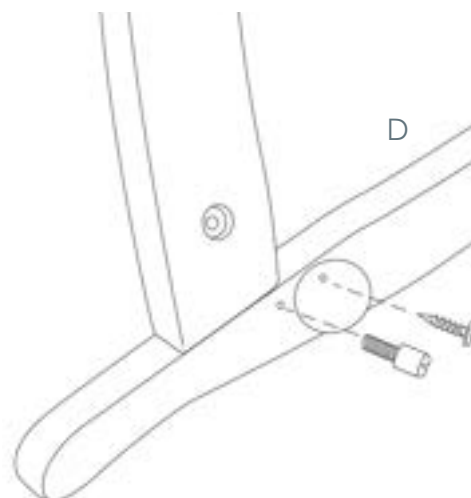


Important: Ensure holes for stabiliser in rocker D are facing same way as recesses in uprights A and B.



Step 2

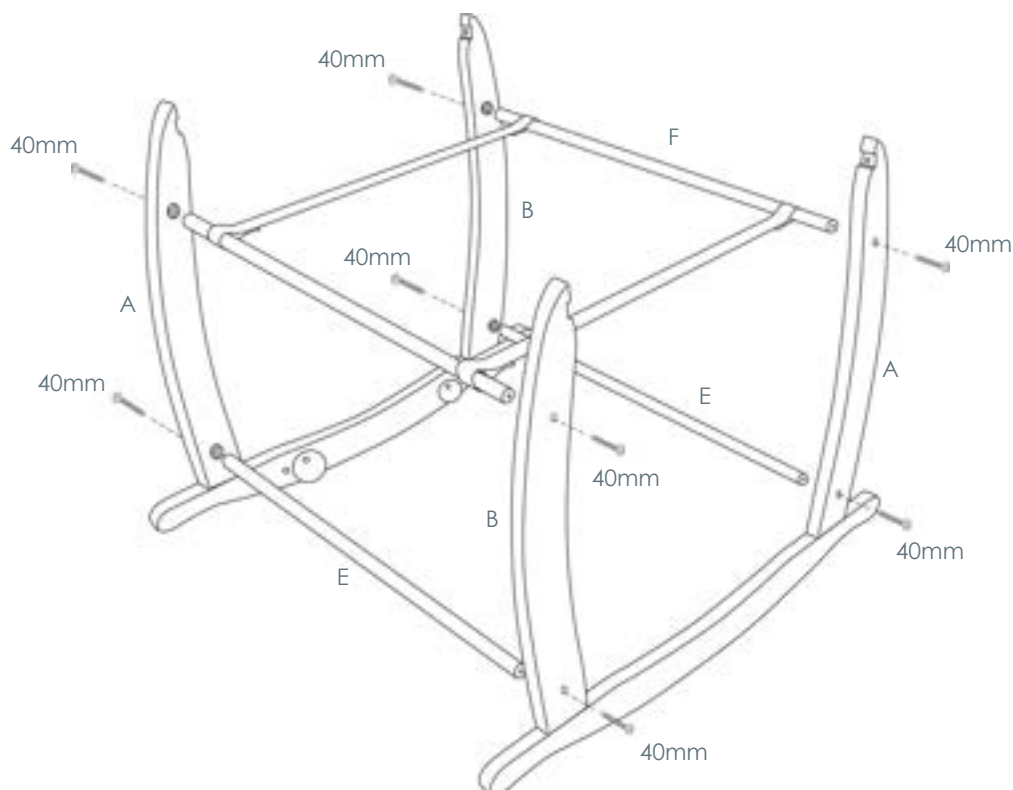
1. Using 2 x 16mm screws, affix circular stabilisers H to inner guide marks at either end of D.
2. Screw 2 x 18mm barrel screws to outer holes at either end of D.



Step 3

1. Align the two sides of rocking stand so that the recesses for dowels E in the uprights face each other.
2. Locate the 2 bottom dowels E into the lower recesses in uprights A/B, secure using 4 x 40mm screws.
3. Locate strap & dowel assembly F into the upper recesses in uprights A/B, secure using 4 x 40mm screws.

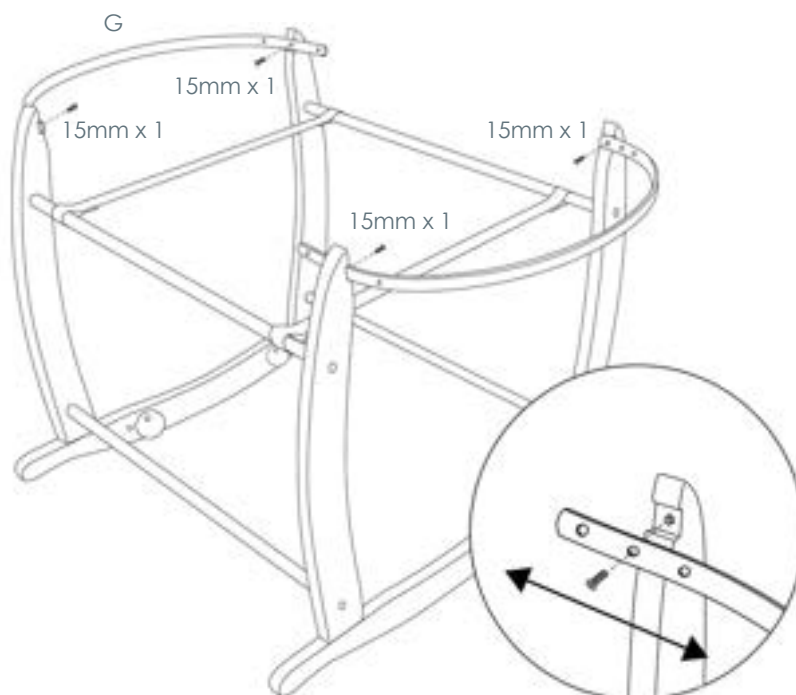
Important: Ensure the staples securing the straps to the dowels on part F are facing downwards. Make sure the dowels are pushed fully into the recesses.



Important: Make sure dowels are pushed fully into the dowel recesses.

Step 4

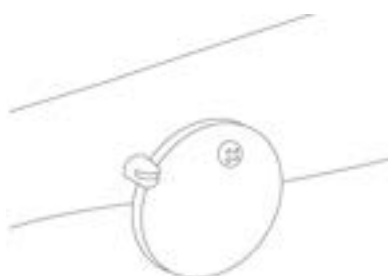
Align the holes in the flexible straps G with the gold star-shaped fittings on the inside of the uprights A/B on both sides. Secure using 4 x 12mm screws.



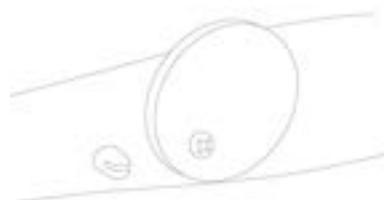
Important: Ensure the Moses basket is held securely by the end straps. Use the 3 holes on the end straps to provide adjustment. Check carefully that the Moses basket is secure in the rocking stand before use.

Step 5

Important: Stabilisers must be in locked position when the stand is unattended.



Locked



Unlocked

AFTER FIRST USE PLEASE RE-CHECK TO ENSURE THAT ALL SCREWS ARE TIGHTENED SECURELY.