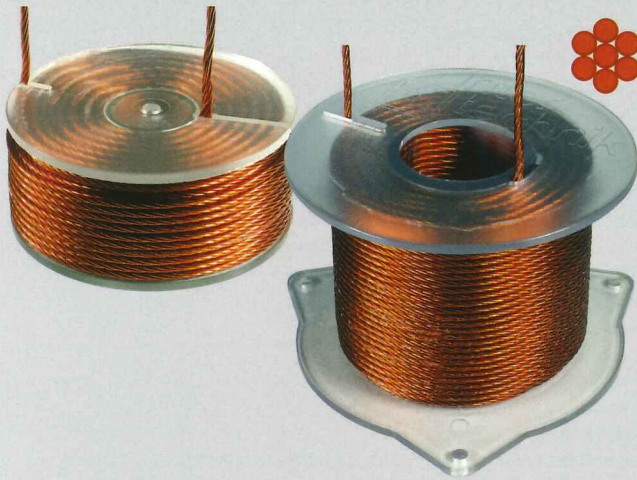




TRITEC™ INDUCTORS AWG 23 X 7



Inductor Configuration

High End inductor
 Thermoplastic copper wire:
 Concentric wire assembly

on a polycarbonate inductor body
 0.60mm Diameter
 with 7 twisted, solitary insulated
 copper conductors

Transposition:
 Coiling Type:
 Specification:
 Wire Connection:
 Tinned Length:

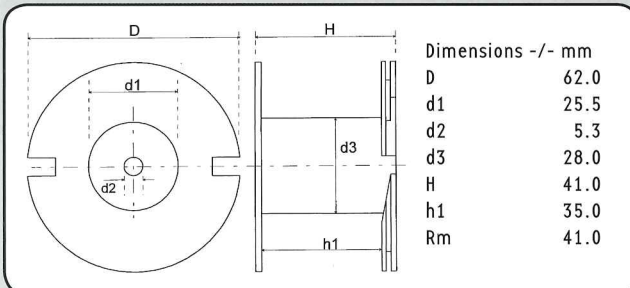
clockwise
 hexagonal
 Inductor backed and immersed
 100mm
 10mm

Characteristics

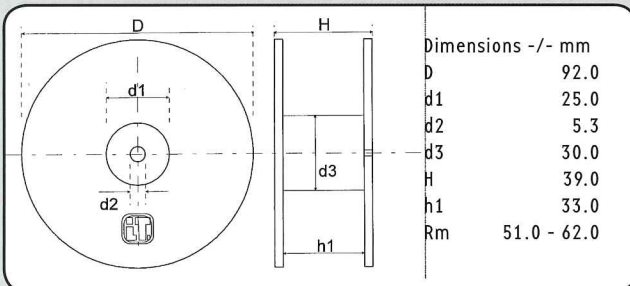
- Low ohmic resistances
- High quality factor
- Very low skin effect
- No saturation distortion
- No hysteresis distortion
- Constant inductance at current change
- Constant inductance at load changes

Technical Data

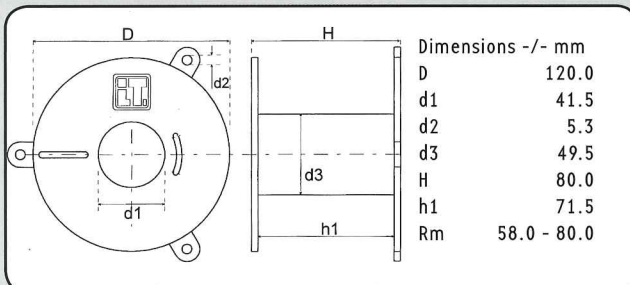
- Inductor Body: Polycarbonate (-90 to 135°C)
- Inductance Area: 0.15 mH to 15.0 mH
- L-tolerance +/- 1%
- Copper Conductor 99.99% Purity
- Insulation Temperature 150°C
- Temperature Coefficient 0.000394 per °C
- Skin Effect Rac = Rdc 27, 18 12



LU 62/41



LU 92/39



LU 120/80

Tritec Cu. 7 x 0.60 mm; Cross-Section 1.98 mm² AWG 23 x 7

Description	L/mH	R/Ohm	DxH/mm	Order No.
LU 62/0.22 TT/060	0.22	0.112	62x41	150 0224
LU 62/0.27 TT/060	0.27	0.125	62x41	150 0225
LU 62/0.33 TT/060	0.33	0.150	62x41	150 0227
LU 62/0.39 TT/060	0.39	0.160	62x41	150 0310
LU 62/0.47 TT/060	0.47	0.170	62x41	150 0228
LU 92/0.56 TT/060	0.56	0.185	92x39	150 0229
LU 92/0.68 TT/060	0.68	0.210	92x39	150 0230
LU 92/0.82 TT/060	0.82	0.231	92x39	150 0231
LU 92/1.00 TT/060	1.00	0.265	92x39	150 0232
LU 92/1.20 TT/060	1.20	0.293	92x39	150 0233
LU 92/1.50 TT/060	1.50	0.334	92x39	150 0234
LU 92/1.80 TT/060	1.80	0.369	92x39	150 0235
LU 92/2.00 TT/060	2.00	0.397	92x39	150 0236
LU 92/2.20 TT/060	2.20	0.419	92x39	150 0237
LU 92/2.70 TT/060	2.70	0.456	92x39	150 0238
LU 120/3.00 TT/060	3.00	0.500	120x55	150 0239
LU 120/3.30 TT/060	3.30	0.530	120x55	150 0240
LU 120/3.90 TT/060	3.90	0.580	120x55	150 0241
LU 120/4.70 TT/060	4.70	0.640	120x55	150 0242
LU 120/5.60 TT/060	5.60	0.710	120x55	150 0243
LU 120/6.80 TT/060	6.80	0.790	120x55	150 0244
LU 120/8.20 TT/060	8.20	0.890	120x55	150 0245
LU 120/10.0 TT/060	10.00	1.090	120x80	150 0246
LU 120/12.0 TT/060	12.00	1.210	120x80	150 0247
LU 120/15.0 TT/060	15.00	1.350	120x80	150 0248