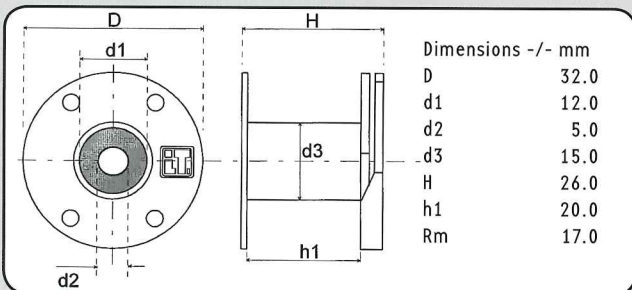


INDUCTORS FOR EQUALIZER NETWORKS



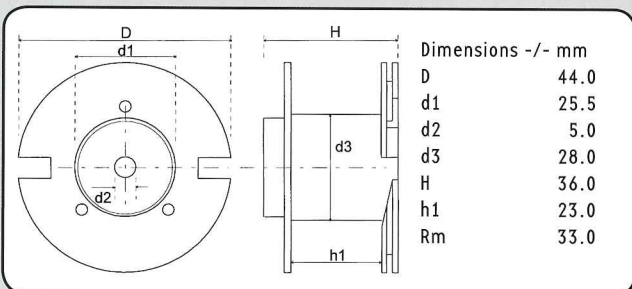
Copper Wire Ø: 0.50 mm - 0.60 mm
 CU Purity: > 99.99 %
 Wire Bonding Length: 10 mm
 Tin Coated Length: 9 mm
 Core Material: soft ferrite/Corobar
 L-tolerance: ± 5 %
 L-Value: Nom. 25° C and 1 kHz



HQR 32/26

| HQR 32/26 • CU 0.60 mm • Cross-Section 0.28 mm ² | | | AWG 23 |
|---|------|-------|--------------|
| Description | L/mH | R/0hm | Order Number |
| HQR32/2.2/060 | 2.20 | 1.09 | 134 0960 |
| HQR32/2.7/060 | 2.70 | 1.23 | 134 0962 |
| HQR32/3.3/060 | 3.30 | 1.41 | 134 0964 |
| HQR32/3.9/060 | 3.90 | 1.58 | 134 0966 |

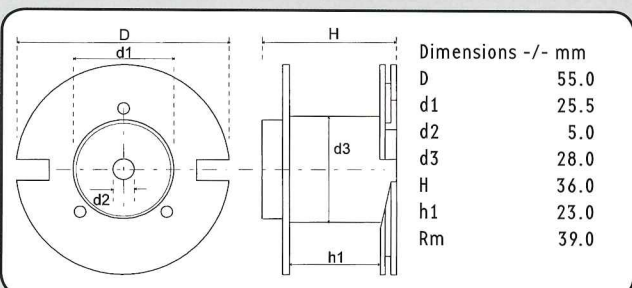
| HQR 32/26 • CU 0.50 mm • Cross-Section 0.20 mm ² | | | AWG 24 |
|---|------|-------|--------------|
| Description | L/mH | R/0hm | Order Number |
| HQR32/4.7/050 | 4.70 | 2.31 | 134 0968 |
| HQR32/5.6/050 | 5.60 | 2.56 | 134 0970 |



CO 44/36

| CO 44/36 • CU 0.60 mm • Cross-Section 0.28 mm ² | | | AWG 23 |
|--|------|-------|--------------|
| Description | L/mH | R/0hm | Order Number |
| C044/6.8/060 | 6.80 | 2.02 | 134 0972 |
| C044/8.2/060 | 8.20 | 2.27 | 134 0974 |

| CO 44/36 • CU 0.50 mm • Cross-Section 0.20 mm ² | | | AWG 24 |
|--|------|-------|--------------|
| Description | L/mH | R/0hm | Order Number |
| C044/10/050 | 10.0 | 3.48 | 134 0976 |
| C044/12/050 | 12.0 | 3.87 | 134 0978 |
| C044/15/050 | 15.0 | 4.40 | 134 0980 |



CO 55/36

| CO 55/36 • CU 0.60 mm • Cross-Section 0.28 mm ² | | | AWG 23 |
|--|------|-------|--------------|
| Description | L/mH | R/0hm | Order Number |
| C055/18/060 | 18.0 | 3.74 | 134 0982 |
| C055/22/060 | 22.0 | 4.26 | 134 0984 |
| C055/27/060 | 27.0 | 4.89 | 134 0986 |