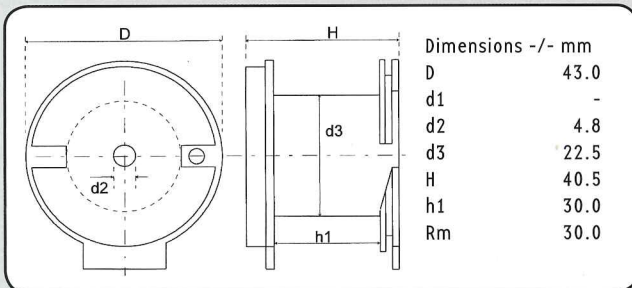
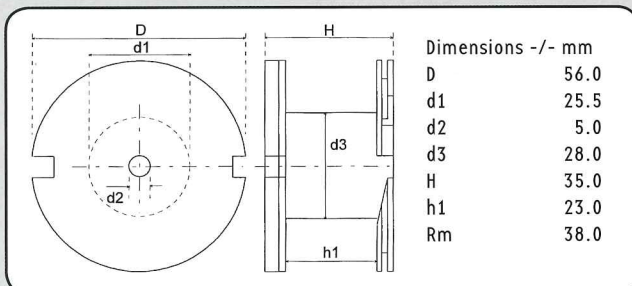


**▶ HQ – MUSHROOM STYLE CORE INDUCTOR**


Copper Wire Ø: 0.85 - 1.40 mm  
 CU Purity: > 99.99 %  
 Wire Bonding Length: 10/ 40 mm  
 Tin Coated Length: 9/ 35 mm  
 Core Material: HQ – Soft Ferrite  
 L-tolerance: ± 5 %  
 L-Value: Nom. 25° C and 1 kHz


**HQP 43/40**

**HQP 56/35**
**HQP 43/40 • CU 0.95 mm • Cross-Section 0.71 mm<sup>2</sup> AWG 19**

Description	L/mH	R/0hm	Order Number
HP43/1.0/095	1.00	0.25	134 0280
HP43/1.2/095	1.20	0.27	134 0281
HP43/1.5/095	1.50	0.31	134 0282
HP43/1.8/095	1.80	0.34	134 0283
HP43/2.2/095	2.20	0.39	134 0284

The inductor is vertically or horizontally mountable.

**HQP 56/35 • CU 1.32 mm • Cross-Section 1.37 mm<sup>2</sup> AWG 16**

Description	L/mH	R/0hm	Order Number
HP56/2.2/132	2.20	0.23	134 0287

**HQP 56/35 • CU 1.12 mm • Cross-Section 0.98 mm<sup>2</sup> AWG 17**

Description	L/mH	R/0hm	Order Number
HP56/2.7/112	2.70	0.31	134 0288
HP56/3.0/112	3.00	0.33	134 0289
HP56/3.3/112	3.30	0.36	134 0290
HP56/3.9/112	3.90	0.42	134 0292
HP56/4.7/112	4.70	0.47	134 0293

**HQP 56/35 • CU 0.95 mm • Cross-Section 0.71 mm<sup>2</sup> AWG 19**

Description	L/mH	R/0hm	Order Number
HP56/5.6/095	5.60	0.65	134 0294
HP56/6.8/095	6.80	0.74	134 0295
HP56/8.2/095	8.20	0.85	134 0296
HP56/10/095	10.0	0.96	134 0297

**HQP 56/35 • CU 0.85 mm • Cross-Section 0.57 mm<sup>2</sup> AWG 20**

Description	L/mH	R/0hm	Order Number
HP56/12/085	12.0	1.20	134 0298
HP56/15/085	15.0	1.40	134 0299