

# C90-6-724

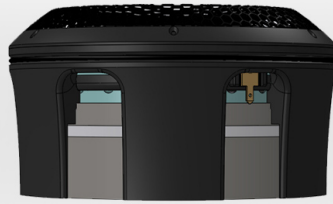
Bass - midrange driver

DOMEMATERIAL: CERAMIC  
APPLICATION: BASS - MIDRANGE  
NOMINAL DIAMETER: 123.6 mm  
SENSITIVITY: 89 dB

### MAIN FEATURES :

- FULL FEATURED CELL CONCEPT
- IDEAL ACOUSTICAL CENTER
- NO REFLECTIONS AT THE BACKSIDE
- UNDERHUNG MOTOR DESIGN
- 60 HZ - 6 KHZ IN VENTED BOX

CELL<sup>®</sup>  
CONCEPT DRIVER



The **C90 - 6 - 724** is a 5 inch bass - midrange driver with **ceramic dome**, being the first in an entirely new approach to accuton speaker design.

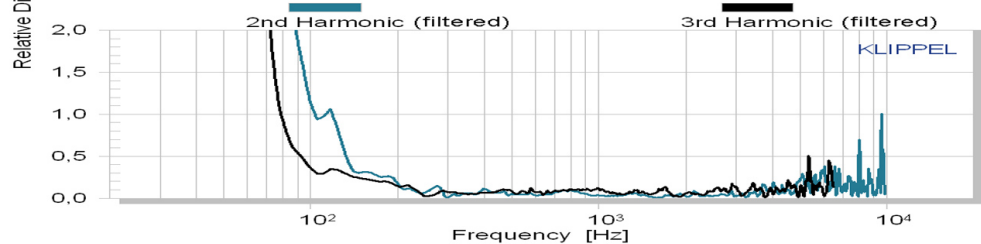
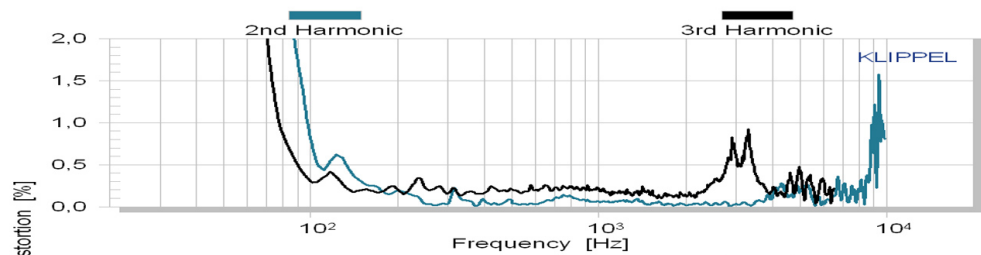
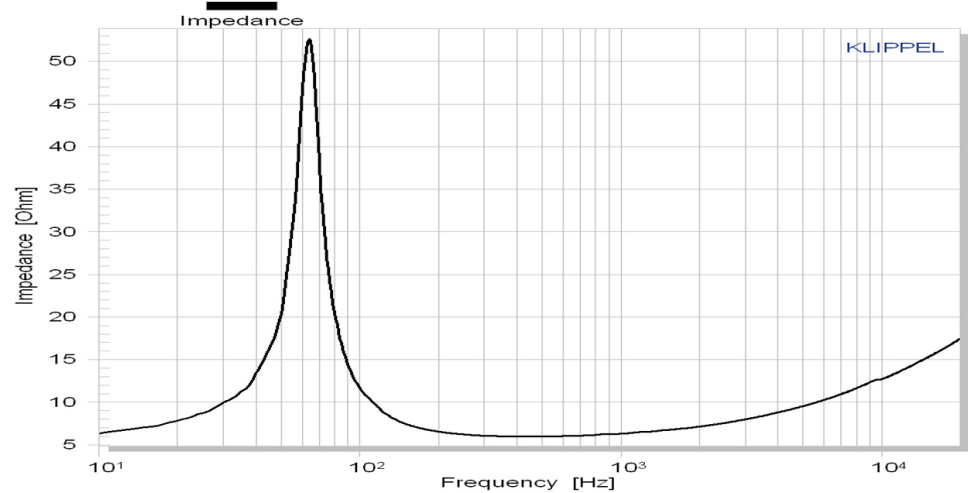
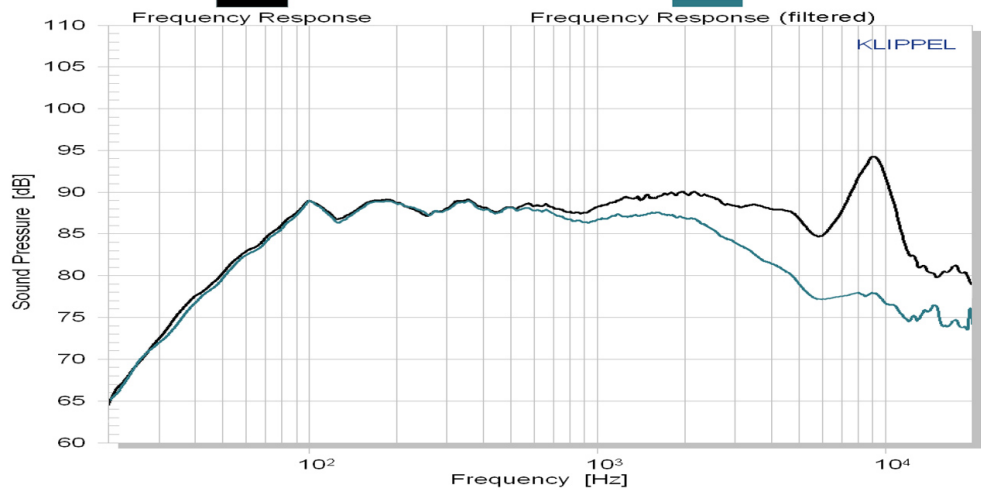
An **ideal acoustical center** has been achieved, which is identical with our tweeters.

Its **novel designed underhung motor** does not cover the backside of the dome, eliminating the chance for reflections and energy storage.

A **proprietary clamping technique** provides easy mounting and adapting to individual front-plates.

The low loss rubber surround and a **thin fabric spider** center the moving parts with high linearity.

We recommend our **C90-6-724** for an application from 60 Hz – 6000 Hz.



CELL<sup>®</sup>  
CONCEPT DRIVER

All rights reserved - All data with reservation and subject to change.

Thiel & Partner GmbH

Kantstrasse 1

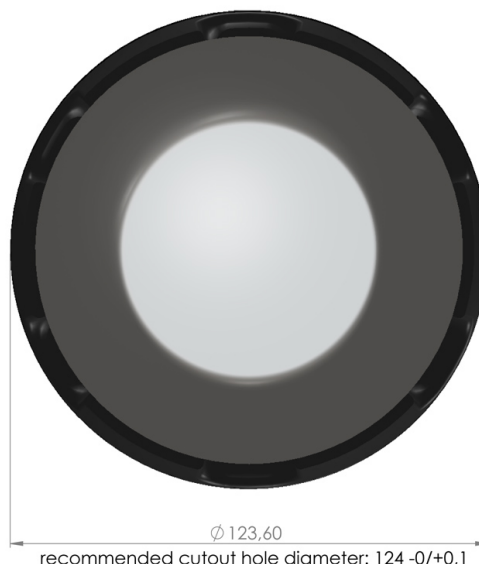
50259 Pulheim

T +49 (0) 2238 / 475475

a.bankewitz@accuton.com



**C90 - 6 - 724**  
Bass - midrange driver



Mechanical data		
Overall diameter	123.6	mm
Cutout diameter	124	mm
Frontplate depth minimum	8	mm
Overall depth	55	mm
Motor assembly diameter	-	mm
Motor assembly depth	-	mm
Screwdriver required	DIN 7984, 3mm	
Terminal	+ : 6.3 x 0.8 / - : 4.8 x 0.8	mm
Shipping weight / net weight	1.75 / 1.65	kg
Shipping box size	180 / 180 / 240	mm

Thiele/Small Parameters			
Sensitivity (2.83V / 1m)	E	89*	dB
DC-resistance	Re	5.8	Ohm
resonance frequency	Fs	65	Hz
equivalent vol. of air	Vas	5.1	L
mechanical Q	Qms	5.47	
electrical Q	Qes	0.58	
total Q	Qts	0.52	
effective piston area	Sd	81	cm <sup>2</sup>
moving mass	Mms	8.9	g
suspension compl.	Cms	0.65	mm/N
mechanical resistance	Rms	0.68	kg x s

Voice Coil data			
Power handling	P	100*	Watt
Linear excursion	Xmax	+/- 4	mm
Voice coil diameter		80	mm
Voice coil former material		Ti	
Voice coil material		Cu	
Voice coil inductance	Le	0.14	mH
Force factor	Bl	6.1	N/A
Motor type		Underhung	
Ferrofluid filling		no	

\* See [www.accuton.com](http://www.accuton.com) for exact measurement conditions.

All rights reserved - All data with reservation and subject to change.

Thiel & Partner GmbH Rommerskirchenerstrasse 21 50259 Pulheim T +49 (0) 2238 / 475475 [info@accuton.com](mailto:info@accuton.com)