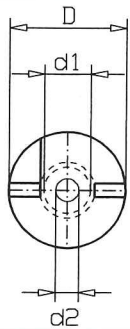


**AIR CORE INDUCTORS AWG 25 - 21**

**LU 25/14**

Dimensions -/- mm	
D	25.0
d1	10.0
d2	5.5
d3	12.0
H	14.0
h1	8.0
Rm	15.0

Copper Wire Ø:	0.45- 0.71 mm
CU Purity:	> 99.99 %
Wire Bonding Length:	10 mm
Tin Coated Length:	9 mm
Coil Body Material:	ABS
L-tolerance:	± 3 %
L-Value:	Nom. 25°C and 1 kHz

**LU 25/14 • CU 0.71 mm • Cross-Section 0.40 mm<sup>2</sup> AWG 21**

Description	L/mH	R/0hm	Order Number
LU25/005/071	0.05	0.15	150 0050
LU25/006/071	0.06	0.17	150 0051
LU25/007/071	0.07	0.18	150 0052
LU25/008/071	0.08	0.19	150 0053

**LU 25/14 • CU 0.60 mm • Cross-Section 0.28 mm<sup>2</sup> AWG 23**

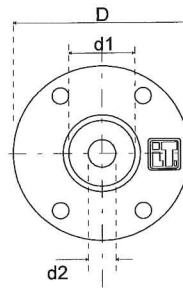
Description	L/mH	R/0hm	Order Number
LU25/010/060	0.10	0.29	150 0054
LU25/012/060	0.12	0.32	150 0055

**LU 25/14 • CU 0.50 mm • Cross-Section 0.20 mm<sup>2</sup> AWG 24**

Description	L/mH	R/0hm	Order Number
LU25/015/050	0.15	0.49	150 0056
LU25/018/050	0.18	0.55	150 0057
LU25/022/050	0.22	0.62	150 0058
LU25/027/050	0.27	0.70	150 0059
LU25/030/050	0.30	0.74	150 0060
LU25/033/050	0.33	0.78	150 0061

**LU 25/14 • CU 0.45 mm • Cross-Section 0.16 mm<sup>2</sup> AWG 25**

Description	L/mH	R/0hm	Order Number
LU25/039/045	0.39	1.04	150 0062
LU25/047/045	0.47	1.15	150 0063

**AIR CORE INDUCTORS AWG 21**

**LU 32/26**

Dimensions -/- mm	
D	32.0
d1	12.0
d2	5.3
d3	15.0
H	26.0
h1	20.0
Rm	17.0

Copper Wire Ø:	0.71 mm
CU Purity:	> 99.99 %
Wire Bonding Length:	10 mm
Tin Coated Length:	9 mm
Coil Body Material:	ABS
L-tolerance:	± 3 %
L-Value:	Nom. 25°C and 1 kHz

**LU 32/26 • CU 0.71 mm • Cross-Section 0.40 mm<sup>2</sup> AWG 21**

Description	L/mH	R/0hm	Order Number
LU32/010/071	0.10	0.26	134 0200
LU32/012/071	0.12	0.28	134 0210
LU32/015/071	0.15	0.32	134 0215
LU32/018/071	0.18	0.35	134 0220
LU32/022/071	0.22	0.39	134 0225
LU32/027/071	0.27	0.43	134 0230
LU32/033/071	0.33	0.48	134 0235
LU32/039/071	0.39	0.53	134 0240
LU32/047/071	0.47	0.57	134 0245
LU32/056/071	0.56	0.65	134 0246
LU32/068/071	0.68	0.72	134 0247