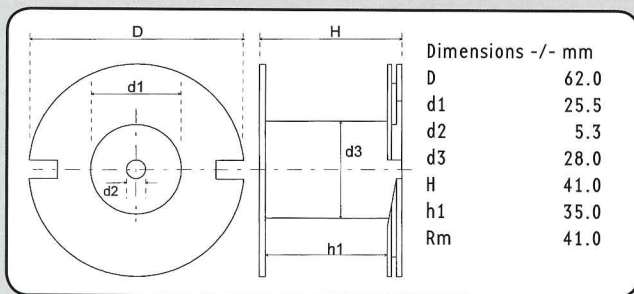


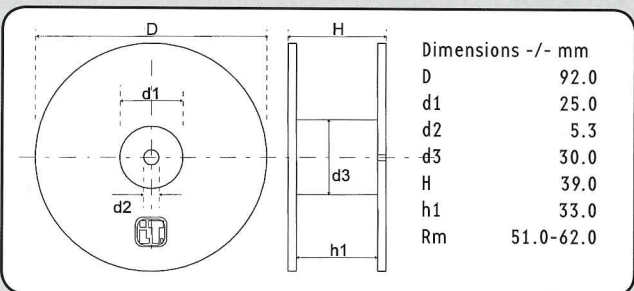
**AIR CORE INDUCTORS AWG 12**



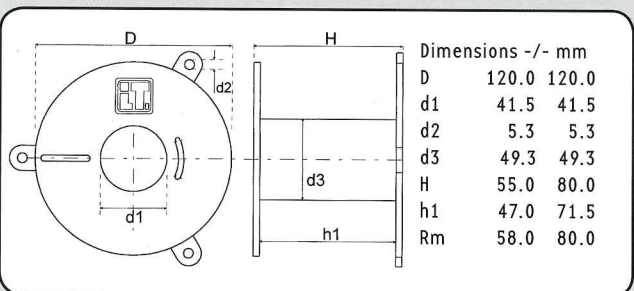
Copper Wire Ø: 2,0 mm  
 CU Purity: > 99.99 %  
 Wire Bonding Length: 40.0 mm ab LU 120 150 mm  
 Tin Coated Length: 9.0 mm  
 Coil Body Material: ABS  
 L-tolerance: ± 3 %  
 L-Value: Nom. 25° C and 1 kHz



**LU 62/41**



**LU 92/39**



**LU 120/55 - LU 120/80**

**LU 62/41 • CU 2. 00 mm • Cross-Section 3. 14 mm<sup>2</sup> AWG 12**

Description	L/mH	R/0hm	Order Number
LU62/010/200	0. 10	0. 050	134 0900
LU62/012/200	0. 12	0. 054	134 0902
LU62/015/200	0. 15	0. 061	134 0904
LU62/018/200	0. 18	0. 066	134 0906
LU62/022/200	0. 22	0. 074	134 0908
LU62/027/200	0. 27	0. 082	134 0910

**LU 92/39 • CU 2. 00 mm • Cross-Section 3. 14 mm<sup>2</sup> AWG 12**

Description	L/mH	R/0hm	Order Number
LU92/033/200	0. 33	0. 092	134 0912
LU92/039/200	0. 39	0. 100	134 0914
LU92/047/200	0. 47	0. 110	134 0916
LU92/056/200	0. 56	0. 120	134 0918
LU92/068/200	0. 68	0. 130	134 0920
LU92/082/200	0. 82	0. 150	134 0922
LU92/1. 0/200	1. 00	0. 170	134 0924
LU92/1. 2/200	1. 20	0. 180	134 0926
LU92/1. 5/200	1. 50	0. 210	134 0928

**LU 120/55 • CU 2. 00 mm • Cross-Section 3. 14 mm<sup>2</sup> AWG 12**

Description	L/mH	R/0hm	Order Number
LU120/1. 8/200	1. 80	0. 25	134 0074
LU120/2. 2/200	2. 20	0. 28	134 0073
LU120/2. 7/200	2. 70	0. 31	134 0075
LU120/3. 0/200	3. 00	0. 33	134 0076
LU120/3. 3/200	3. 30	0. 35	134 0077
LU120/3. 9/200	3. 90	0. 39	134 0079
LU120/4. 7/200	4. 70	0. 43	134 0081
LU120/5. 6/200	5. 60	0. 47	134 0082
LU120/6. 8/200	6. 80	0. 53	134 0083

**LU 120/80 • CU 2. 00 mm • Cross-Section 3. 14 mm<sup>2</sup> AWG 12**

Description	L/mH	R/0hm	Order Number
LU120/8. 2/200	8. 20	0. 62	134 0084
LU120/10/200	10. 00	0. 69	134 0085