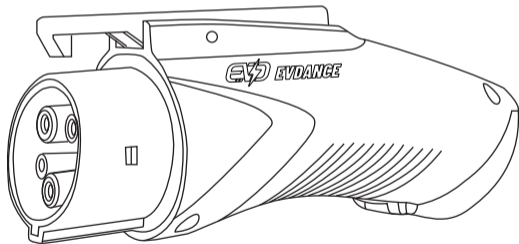












Vehicle to Load (V2L) Adapter User Manual

EV-JT07

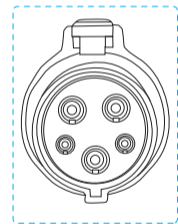


Please read the user manual carefully before use

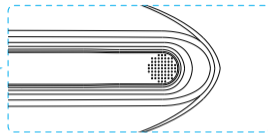
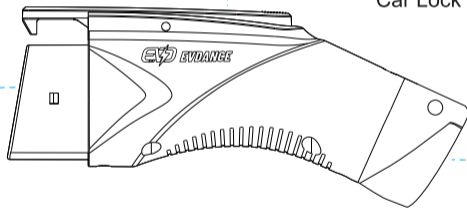
Warnings

-  The same electricity risks apply with the V2L system as they do with standard 3-Pin power outlets in the home or work. **RISKS OF ELECTROCUTION FROM IMPROPER USE.**
-  DO NOT use the V2L Adapter, vehicle charging port or 3-pin outlet power plug while in use with wet hands. It can increase the risk of electrocution. Always handle the V2L Adapter with dry hands.
-  DO NOT use or allow the V2L Adapter to get wet by water, this can increase the risk of electrocution.
-  Electrical equipment used outdoors - only use electrical equipment with a waterproof function/ rating or use it in a waterproof environment. Do Not use in environments with rain or high humidity.
-  DO NOT insert metal objects into the V2L Adapter connectors or in the vehicle charging port, as this action can damage the connection terminals and increase the risk of electrocution.
-  DO NOT attempt to open, disassemble, repair, tamper with, or modify the V2L Adapter. The V2L Adapter is not user-serviceable.
-  DO NOT use the V2L Adapter if it is defective, appears cracked, frayed, broken or otherwise damaged, or fails to operate.
-  DO NOT use high power electrical equipment / appliances such as an air conditioner, washing machine or dryer.

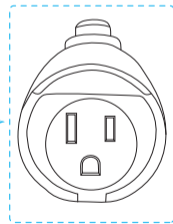
Product Overview



J1772 Connector



Car Lock Button



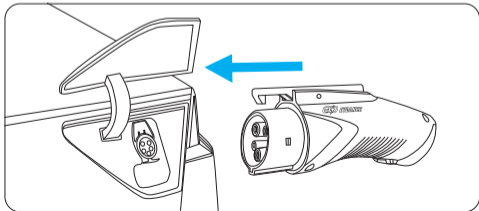
NEMA 5-15 Outlet

Specifications

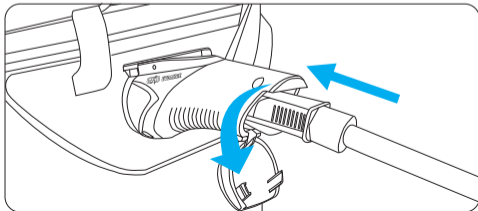
Model: EV-JT07	Connector Type: J1772
Outlet: NEMA 5-15 (AC)	Operating Temperature: -22°F to 122°F (-30°C to 50°C)
Current: 15A Max	Storage Temperature: -40°F to 185°F (-40°C to 85°C)

How To Use

Step 1: Connect the V2L adapter to the car. Just plug the J1772 side into the car's AC charging port.



Step 2: Open the cover of the V2L adapter and connect your device to the NEMA 5-15 outlet.



Step 3: Adjust the V2L settings from the car's infotainment system. Set your preferred V2L battery -discharging limit (80% ~ 20%) of State of Charge (SOC) to which you want the system to stop the supply of electricity to the V2L Adaptor.

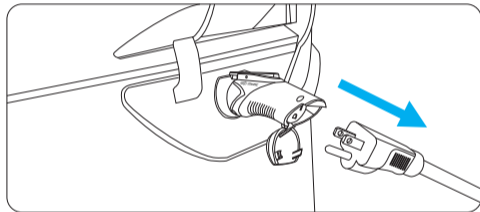
EV Charge transfer settings

Discharging Limit: 40%

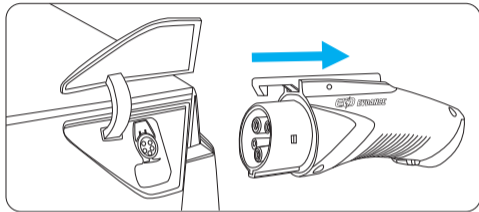
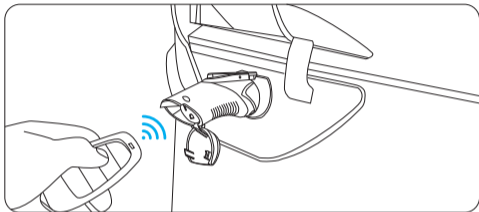
20% ↔ 30% ↔ 40% ↔ 50% ↔ 60% ↔ 70% ↔ 80%

Note: The V2L discharging will automatically stop once the car's battery percentage reaches to the limit.

Step 4: Disconnect the device from the V2L adapter when the discharging is finished, then the car will automatically shut off the power to the adapter.



Step 5: Press the unlock button of remote smart key to unlock the charging port, then disconnect the V2L adapter from the port and close the charging port door.



After-sale Service

Our product comes with a 12 months warranty from the day of purchase. If you have any question, please feel free to contact us.

E-mail: [contact @ evdances.com](mailto:contact@evdances.com)