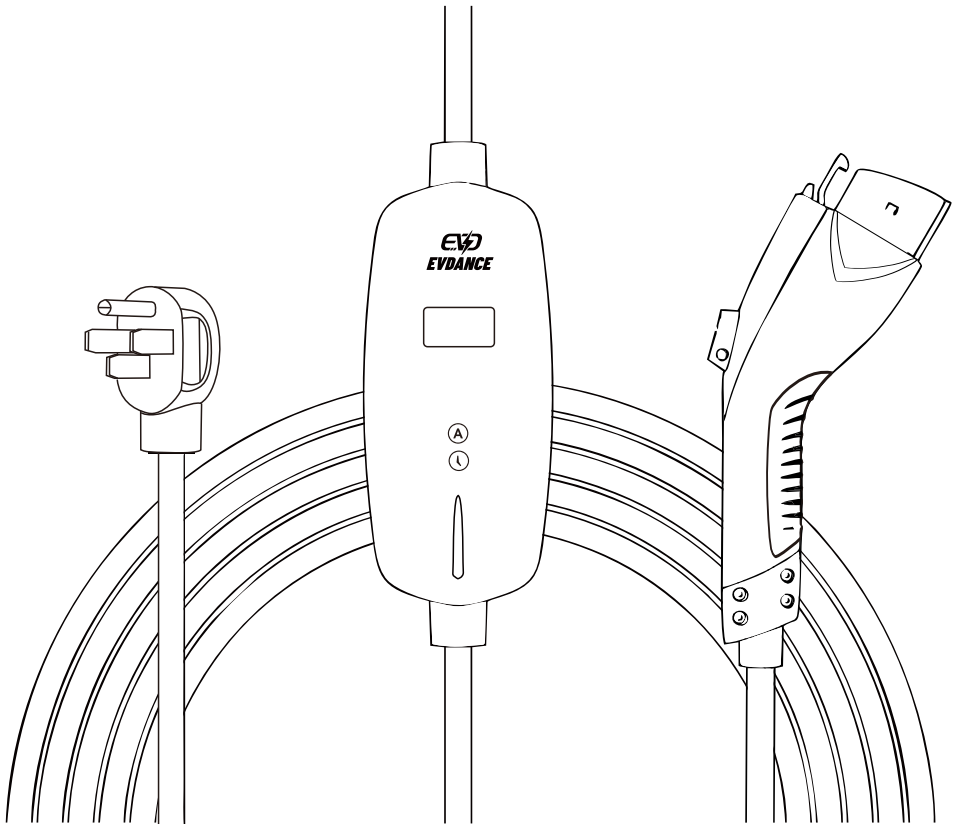




LEVEL 2 PORTABLE ELECTRIC VEHICLE CHARGER

User Manual
Model: EV-ACS4001U



Please read the user manual carefully before use



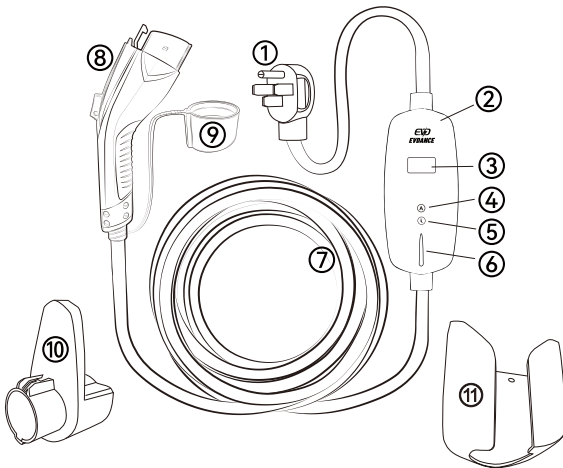
WARNINGS

- ⚠ Do not connect the EV charger into a power outlet that is not properly grounded.
- ⚠ Please use the EV charger only within the specified operating parameters.
- ⚠ The charger is designed only for vehicles that are compatible with the SAE J1772 AC Level 2 charging standard.
- ⚠ Do not use the EV charger if it is defective, appears cracked, frayed, broken or otherwise damaged, or fails to operate.
- ⚠ Do not use the EV charger's plug or adapter in any outlet for which they are not designed.
- ⚠ Do not attempt to open, disassemble, repair, tamper with, or modify the EV charger. The EV charger is not user-serviceable.
- ⚠ Do not disconnect the EV charger from the wall outlet when the vehicle is charging.
- ⚠ Do not use the EV charger when either you, the vehicle or the EV charger is exposed to severe rain, snow, electrical storm or other inclement weather.
- ⚠ Protect the EV charger from moisture, water and foreign objects at all times. If any exist or appear to have corroded or damaged the EV charger, do not use the EV charger.
- ⚠ Do not plug the EV charger into an electrical outlet that is submerged in water or covered in snow. If in this situation, the EV charger is already plugged in and needs to be unplugged, turn off the breaker before unplugging the EV charger.
- ⚠ Do not touch the EV charger's end terminals with sharp metallic objects, such as wire, tools or needles. Do not forcefully fold any part of the EV charger or damage it with sharp objects. Do not insert foreign objects into any part of the EV charger.
- ⚠ The EV charger is not a toy and should be kept away from children. If the EV charger is operating, children nearby should be supervised at all times.

PRODUCT SPECIFICATIONS

Voltage	240V AC Single-phase
Current	40A Max
Power	9.6kW Max
Plug	NEMA 14-50 Plug
Circuit Breaker Requirements	50A Circuit Breaker
Standard	SAE J1772 (IEC 62196 Type 1)
Operating Temperature	-22°F to 122°F (-30°C to 50°C)
Storage Temperature	-40°F to 185°F (-40°C to 85°C)
IP Rating	IP66
Total Length	28 Feet

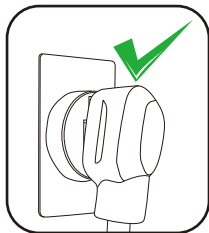
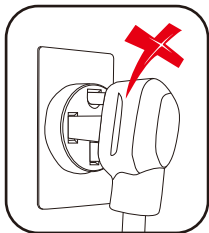
PRODUCT OVERVIEW



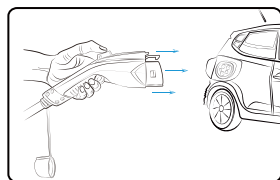
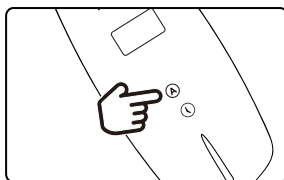
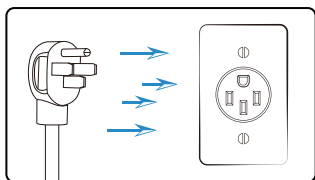
- ① NEMA 14-50 Plug
- ② Control Box
- ③ 1.77" TFT Display
- ④ Current Adjust Button
- ⑤ Delayed Start Timer Button
- ⑥ LED Light
- ⑦ Charging Cable
- ⑧ SAE J1772 Connector
- ⑨ Protective Cap
- ⑩ Cable & Connector Holder
- ⑪ Control Box Holder

CAUTIONS BEFORE START CHARGING

1. Make sure that the power outlet is properly grounded before plug the EV charger into it.
2. Do not use the EV charger if it is defective, appears cracked, frayed, broken or otherwise damaged, or fails to operate. Do not start using if the plug is dirty or wet.
3. The plug should be inserted completely into the power outlet.

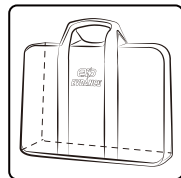
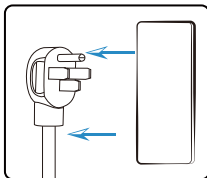
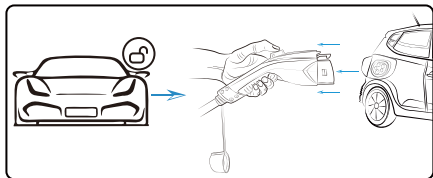


HOW TO START CHARGING



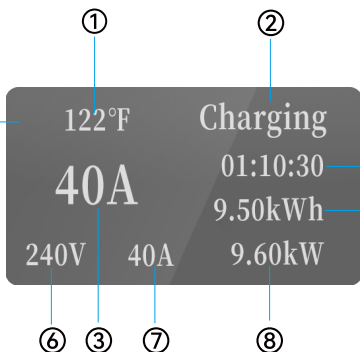
1. Turn off the vehicle and completely insert the EV charger's plug into the power outlet.
2. Long press the adjust button to select the proper charging current.
3. Take off the protective cap, plug the charger connector into your vehicle and start charging.

HOW TO STOP CHARGING



1. Unlock the vehicle and press the button above the handle to pull the charger connector out of the charge port.
2. Disconnect the charger's plug from the power outlet.
3. Put on the protective cap then put the charger into the storage bag, and store it in an appropriate location.

OLED DISPLAY DESCRIPTION



- ① Temperature
- ② Work Status
- ③ Current Option
- ④ Charging Time
- ⑤ Electricity Consumption
- ⑥ Real-time Voltage
- ⑦ Real-time Current
- ⑧ Real-time Power

HOW TO ADJUST THE CHARGING CURRENT



⚠ Please adjust the charging current before inserting the charging Connector. The current can not be adjusted if the EV charger is in charging progress.

- ① Long press the (A) button for 3 seconds then the charging current will change into **40** A state.
- ② Short touch the (A) button to select the proper charging current (10A / 16A / 20A / 24A / 32A / 40A)
- ③ After select the proper charging current, wait for 5 seconds and the current setting is completed.







HOW TO SET THE DELAYED START TIMER



⚠ The EV charger can not charge until the countdown ends. If you want to use the EV charger during the countdown, please long press the (L) button for 3 seconds and delayed start timer will be canceled, then the EV charger can work normally.

- ① Long press the (L) button for 3 seconds then the display will change into **0** H state.
- ② Short touch the (L) button to select the proper delayed start time.
- ③ After select the proper delayed start time, wait for 5 seconds then the display will show the start charging countdown.
- ④ Connect the EV charger's connector to the vehicle and charging will start when the countdown ends.

LED STATUS DESCRIPTION

Flashing		
 Charging	 EV Connected	 Ground fault
Solid on		
 Fully charged	 Standing by	 General fault

TROUBLESHOOTING

Diagnostic	Problem	Solution
The red light is solid on	Leakage / Over voltage / Over current	1.Check whether the charger is broken or damaged. 2.Re-plug the charger. 3.Try a different outlet. If the error persists, please contact our support service.
The red light is flashing	The power outlet is not properly grounded.	The charger must be plugged into a power outlet that is properly grounded, though the charging is allwec when connected to the vehicle.
The blue light is flashing, but the charging is not in progress	Something stops the charging progress.	Re-plug the charger connector and it will start charging again.
The blue light is solid on but the charging is not in progress.	The charger is not connected to the vehicle.	Make sure that the charger connector is plugged completely in to the charge port.
The charging speed is not fast as advertised, or the charging current can't reach the maximum ampere.	A. The charge or the vehicle is overheating B. The vehicle charging setting is set a limited ampere.	A. Stop the charging progress, wait for the charger or vehicle cooling down and start charging again. B. Cancel the ampere limited setting in your vehicle.

AFTER-SALE SERVICE

Our product comes with a 12 months warranty from the day of purchase. If you have any question, please feel free to contact us.

E-mail: contact@evdances.com

Website: <https://evdances.com>