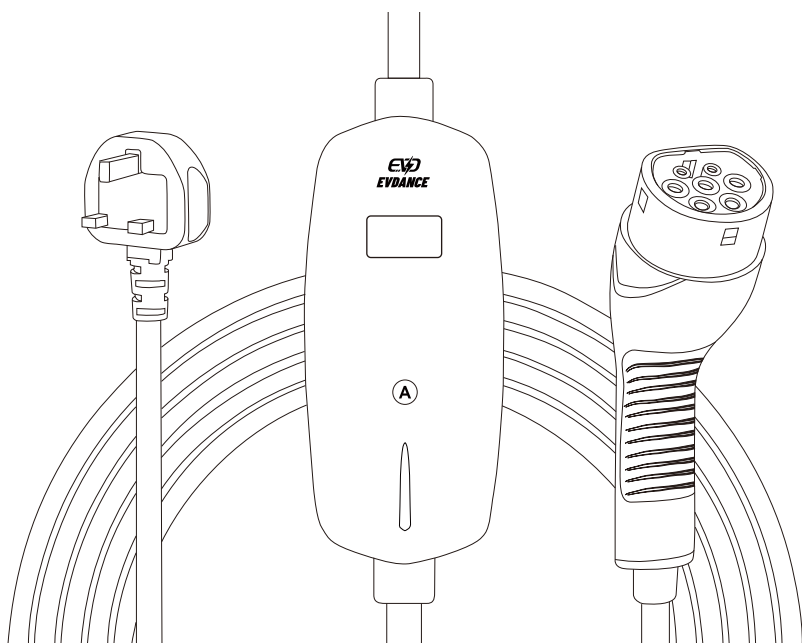




MODE 2 PORTABLE ELECTRIC VEHICLE CHARGER

User Manual
Model: EV-ACS1301B



Please read the user manual carefully before use

DIRECTORY

| | |
|------------------------------|----|
| English description | 1 |
| Instructions en français | 7 |
| Instrucciones en español | 12 |
| Deutsche Bedienungsanleitung | 17 |



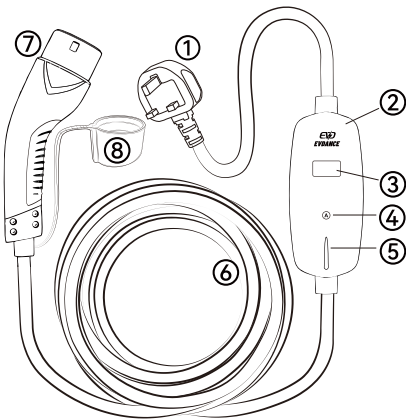
WARNINGS

- ⚠ Use the EV charger only within the specified operating parameters.
- ⚠ Do not connect the EV charger into a power outlet that is not properly grounded.
- ⚠ Please use the EV charger only within the specified operating parameters.
- ⚠ The charger is designed only for vehicles that are compatible with the IEC 62196-2 AC mode 2 charging standard.
- ⚠ Do not use the EV charger if it is defective, appears cracked, frayed, broken or otherwise damaged, or fails to operate.
- ⚠ Do not use the EV charger's plug or adapter in any outlet for which they are not designed.
- ⚠ Do not attempt to open, disassemble, repair, tamper with, or modify the EV charger. The EV charger is not user-serviceable.
- ⚠ Do not disconnect the EV charger from the wall outlet when the vehicle is charging.
- ⚠ Do not use the EV charger when either you, the vehicle or the EV charger is exposed to severe rain, snow, electrical storm or other inclement weather.
- ⚠ Protect the EV charger from moisture, water and foreign objects at all times. If any exist or appear to have corroded or damaged the EV charger, do not use the EV charger.
- ⚠ Do not plug the EV charger into an electrical outlet that is submerged in water or covered in snow. If in this situation, the EV charger is already plugged in and needs to be unplugged, turn off the breaker before unplugging the EV charger.
- ⚠ Do not touch the EV charger's end terminals with sharp metallic objects, such as wire, tools or needles. Do not forcefully fold any part of the EV charger or damage it with sharp objects.
- ⚠ Do not insert foreign objects into any part of the EV charger.
- ⚠ The EV charger is not a toy and should be kept away from children. If the EV charger is operating, children nearby should be supervised at all times.

PRODUCT SPECIFICATIONS

| | |
|-----------------------|----------------------|
| Voltage | 230V AC Single-phase |
| Current | 13A Max |
| Power | 2.99kW Max |
| Plug | UK 3 Pin Plug |
| Standard | IEC 62196-2/Type 2 |
| Operating Temperature | -30°C to 50°C |
| Storage Temperature | -40°C to 85°C |
| IP Rating | IP66 |
| Total Length | 6.1M |

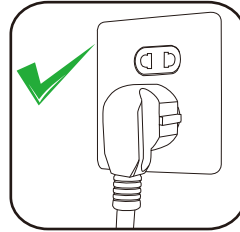
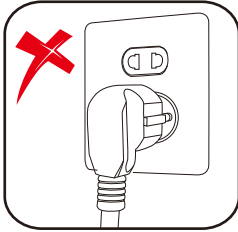
PRODUCT OVERVIEW



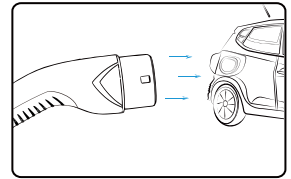
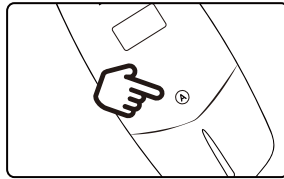
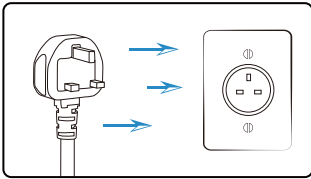
- ① UK 3Pin Plug
- ② Control Box
- ③ OLED Display
- ④ Current Adjust Button
- ⑤ LED Light
- ⑥ Charging Cable
- ⑦ Type 2 Connector
- ⑧ Protective Cap

CAUTIONS BEFORE START CHARGING

1. Make sure that the power outlet is properly grounded before plug the EV charger into it.
2. Do not use the EV charger if it is defective, appears cracked, frayed, broken or otherwise damaged, or fails to operate. Do not start using if the plug is dirty or wet.
3. The plug should be inserted completely into the power outlet.

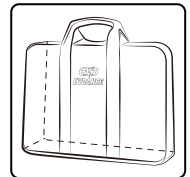
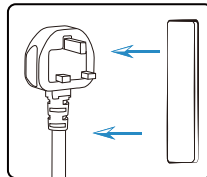
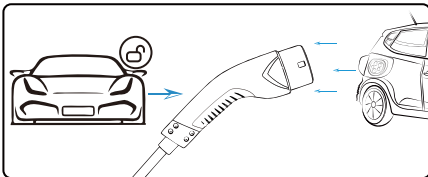


HOW TO START CHARGING



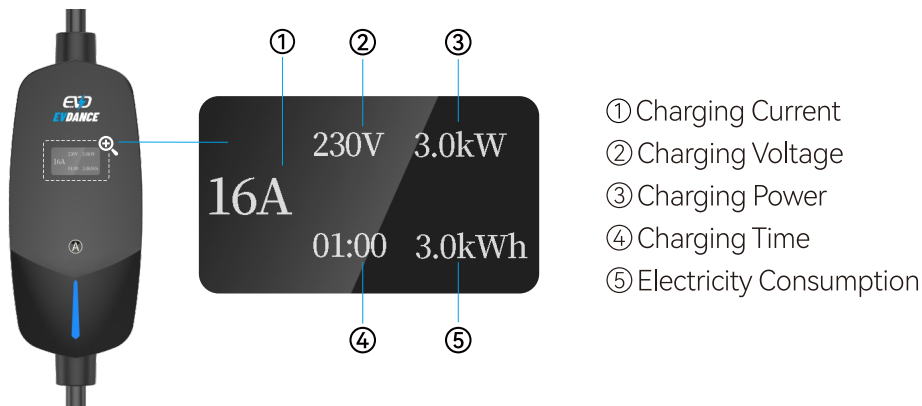
1. Turn off the vehicle and completely insert the EV charger's plug into the power outlet.
2. Long press the adjust button to select the proper charging current
3. Take off the protective cap, plug the charger connector into your vehicle and start charging.

HOW TO STOP CHARGING



1. Unlock the vehicle and press the button above the handle to pull the charger connector out of the charge port.
2. Disconnect the charger's plug from the power outlet.
3. Put on the protective cap then put the charger into the storage bag, and store it in an appropriate location.

OLED DISPLAY DESCRIPTION









HOW TO ADJUST THE CHARGING CURRENT

- ⚠ Please adjust the charging current before inserting the charging Connector. The current can not be adjusted if the EV charger is in charging progress.



- ① Long press the **A** button for 3 seconds then the charging current will change into **16**A
- ② Short touch the **A** button to select the proper charging current (EU: 6A/8A/10A/12A/16A; UK: 6A/8A/10A/13A)
- ③ After select the proper charging current, wait for 5 seconds and the current setting is completed.

LED STATUS DESCRIPTION

| Flashing | | |
|---|--|---|
|  Charging |  EV Connected |  Ground fault |
| Solid on | | |
|  Fully charged |  Standing by |  General fault |

TROUBLESHOOTING

| Diagnostic | Problem | Solution |
|---|---|---|
| The red light is solid on | Leakage Over voltage Over current | 1.Check whether the charger is broken or damaged. 2.Re-plug the charger. 3.Try a different outlet. If the error persists, please contact our support service. |
| The red light is flashing | The power outlet is not properly grounded. | The charger must be plugged into a power outlet that is properly grounded, though the charging is allowed when connected to the vehicle. |
| The blue light is flashing, but the charging is not in progress. | Something stops the charging progress. | Re-plug the charger connector and it will start charging again. |
| The blue light is solid on but the charging is not in progress. | The charger is not connected to the vehicle. | Make sure that the charger connector is plugged completely into the charge port. |
| The charging speed is not fast as advertised, or the charging current can't reach the maximum ampere. | A. The charger or the vehicle is overheating. B. The vehicle charging setting is set a limited ampere. | A.Stop the charging progress, wait for the charger or vehicle cooling down and start charging again. B.Cancel the ampere limited setting in your vehicle. |

AFTER-SALE SERVICE

Our product comes with a 12 months warranty from the day of purchase. If you have any question, please feel free to contact us.

E-mail: contact@evdances.com