

Product Description

Shine is a masterpiece born from the world of solution dyed acrylic textiles. This exquisite fabric stands as a testament to the harmonious fusion of aesthetics and durability.

At its core, Shine boasts a luxurious texture and a vibrant spectrum of colors, ensuring that it not only complements but enhances any design or decor. What truly sets Shine apart, however, is its remarkable resistance to the elements. This solution dyed acrylic fabric is built to defy the challenges of outdoor use, from harsh UV rays to unpredictable weather.

With Shine, you're not just acquiring a fabric; you're investing in enduring beauty. Its ability to withstand fading, staining, and even the harshest environmental conditions makes it the ideal choice for a wide range of applications, from outdoor furniture to awnings. In a world where aesthetics meet resilience, Shine is the true embodiment of excellence.



Applications

Outdoor Furniture Upholstery | Awnings for Homes and Businesses | Outdoor Umbrellas | Patio Cushions and Pillows
Outdoor Curtains | Commercial Shade Structures | Poolside Lounges | Outdoor Dining Chairs

Colors



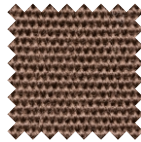
White



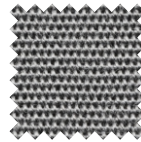
Beige



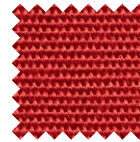
Sand



Chocolate



Charcoal



Red



Yellow

Custom colors available on request

Technical Information

TEST	RESULT	TEST METHOD
Fabric GSM	250 (±5%)	g/m ²
Width	160 cms	- - -
Water Repellency	Pass	AATCC 22-2001
Breaking Strength	Pass	ASTM D5034-95
Color Fastness to Light	7 - 8	ISO 105-B02(2014)
Color Fastness to Rubbing	Wet & Dry 4 - 5	EN ISO 105-X12
Anti Mold / Anti Bacterial	Pass	- - -



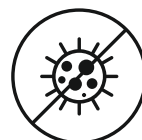
Fade resistant



Dirt & water repellency



Easy to clean



Mold & mildew resistant



Breathable