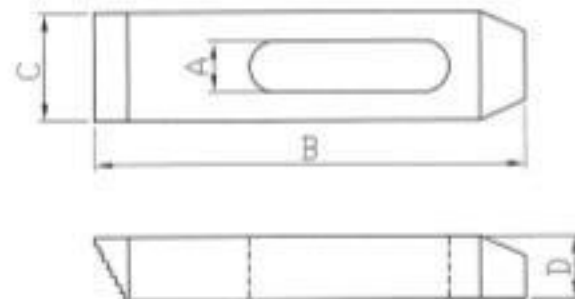
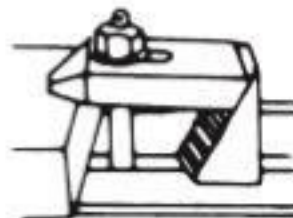




# Step Clamp



HRC 37°



Metric Size

ORDER NO.	Bolt Size	A slot	B Length	C Width	D Thickness	Weight (kg)	CODE NO.
6113	M8 or M10	11	64	25	12	0.11	1003-030
6123	M8 or M10		100	25	16	0.26	1003-031
6133	M8 or M10		150	28	19	0.48	1003-032
6214	M12	14	64	28	12	0.125	1003-033
6224	M12		100	32	19	0.31	1003-034
6234	M12		150	32	22	0.59	1003-035
6215	M16	18	64	32	16	0.16	1003-036
6225	M16		100	38	19	0.39	1003-037
6235	M16		150	38	22	0.71	1003-038
6316	M20 or M18	20	100	38	19	0.36	1003-039
6326	M20 or M18		150	38	25	0.73	1003-040
6336	M20 or M18		200	44	28	1.44	1003-041
6417	M24	26	150	50	32	1.15	1003-042
6427	M24		200	50	35	2	1003-043
6437	M24		250	50	38	2.67	1003-044