



3204



Standard Zubehör
Standard accessories



1 Satz harte einteilige Bohrbacken
1 Set of hard outside-inside solid jaws



1 Satz harte einteilige Drehbacken
1 Set of hard outside solid jaws

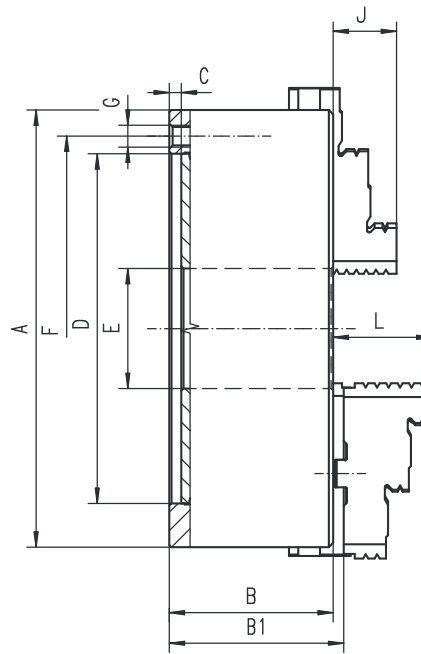


1 Schlüssel
1 Wrench

Ersatzteile • Spare parts 86-131

Technische Daten • Technical data 132-138

| Artikel Nr. Code No. | Typ Type |
|-------------------------|-------------|
| ● 353204010600 | 3204-80 |
| ● 353204020800 | 3204-100 |
| ● 353204030000 | 3204-125 |
| ● 353204040100 | 3204-160 |
| ● 353204050300 | 3204-200 |
| ● 353204060500 | 3204-250 |
| ● 353204070700 | 3204-315 |
| ● 353204080900 | 3204-400 |
| ● 353204090000 | 3204-500 |
| ● 353204100500 | 3204-630 |



■ Geschliffene Oberflächen aller relevanten Baugruppen

■ Ground working surfaces

| A | B | B1 | C | D H7 | E | F | G | J | L | kg |
|-----|------|-------|---|------|-----|-----|-------|----|----|------|
| 80 | 44 | - | 3 | 56 | 16 | 67 | 3xM6 | 13 | - | 1,5 |
| 100 | 50 | - | 3 | 70 | 20 | 83 | 3xM8 | 16 | - | 2,8 |
| 125 | 56 | 60,8 | 4 | 95 | 32 | 108 | 3xM8 | 20 | 40 | 5 |
| 160 | 64,5 | 69,3 | 4 | 125 | 42 | 140 | 6xM10 | 32 | 43 | 10 |
| 200 | 75 | 79,8 | 4 | 160 | 55 | 176 | 6xM10 | 29 | 45 | 17,5 |
| 250 | 85 | 88,8 | 5 | 200 | 76 | 224 | 6xM12 | 34 | 53 | 29 |
| 315 | 94 | 99,1 | 5 | 260 | 103 | 286 | 6xM16 | 43 | 57 | 50 |
| 400 | 105 | 113,8 | 5 | 330 | 136 | 362 | 6xM16 | 55 | 67 | 85 |
| 500 | 120 | 130,8 | 5 | 420 | 190 | 458 | 6xM16 | 60 | 79 | 145 |
| 630 | 135 | 146,3 | 7 | 545 | 252 | 586 | 6xM16 | 70 | 87 | 250 |

Größere Durchmesser finden Sie auf Seite 66-79! • Larger diameters available on page 66-79!

3205



Standard Zubehör
Standard accessories



1 Satz harte Aufsatzbacken
1 Set of hard top jaws



1 Satz harte Grundbacken
1 Set of hard master jaws



1 Schlüssel
1 Wrench

Ersatzteile • Spare parts 86-131

Technische Daten • Technical data 132-138

| Typ Type | Artikel Nr. Code No. |
|-------------|-------------------------|
| - | - |
| - | - |
| 3205-125 | 353205030800 ● |
| 3205-160 | 353205040000 ● |
| 3205-200 | 353205050100 ● |
| 3205-250 | 353205060300 ● |
| 3205-315 | 353205070500 ○ |
| 3205-400 | 353205080700 ○ |
| 3205-500 | 353205090900 ● |
| 3205-630 | 353205100300 ● |