

Verde[®]
{ PETA - APPROVED
VEGAN }



Mosaic Knitting

INTERMEDIATE | KNITTING | TUTORIAL

INTRODUCTION

Mosaic knitting is a colourwork technique that is easy to learn and suitable for any level. Contrasting yarns create geometric repeating patterns without the need for floats or carrying the yarn.

One colour at a time is used to knit in stripes, and stitches from the contrasting colour are slipped. This elongates the stitch and draws it up to create the characteristic vertical patterning of mosaic knitting.

TIPS

There are a few simple steps that you will need to follow:

- Yarn colour is changed every 2 rows, so each row / round is performed twice.
- When changing colour, bring the new yarn from the back underneath and up in-front of the previous colour. Don't pull this too tight but try to keep it at the same level as the knitting.
- Stitches are slipped purlwise with yarn held to the wrong side, unless specified otherwise.

To slip a stitch purlwise:

- Ensure the yarn is held to the wrong side. Slide the tip of the right needle into the next stitch on the left needle as though to purl (i.e. from right to left). Now slip the stitch to the right needle without working it.

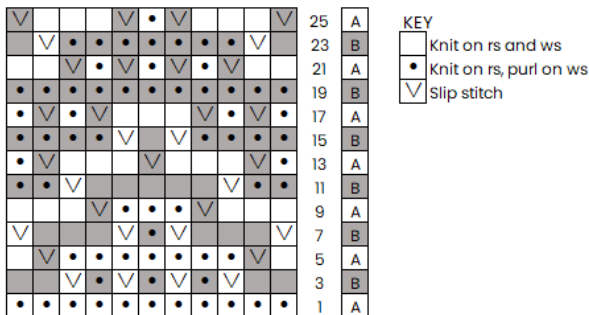
CHARTS

An example of a mosaic knitting chart is shown below.

- The boxes at the right show which yarn should be used, e.g. A or B. Leave the non-working yarn to hang loose (i.e. do not carry it).




Note that just because the colour in the chart is darker, doesn't mean that this has to be performed in the darker shade.

- Each row of the chart represents 2 rows or rounds of knitting.
- When working in rows, follow the chart from right to left for right side rows and work back along the same row from left to right on wrong side rows.
- For knitting in rounds, work the chart from right to left each time., again working 2 rounds for each row on the chart.
- The 2nd row of each colour will mirror the first, so slipped stitches will again be slipped and worked stitches will be knit or purled.
- Always check the key as this will show when knits or purls should be used for the first and second repeat of each row or round.



EXAMPLE OF WRITTEN INSTRUCTIONS

KEY

	Knit on RS and WS
	Knit on Rs, purl on WS
	Slip Stitch

18	•	∇	•	∇				∇	•	∇	•	17	A	
16	•	•	•	•	∇		∇	•	•	•	•	15	B	
14	•	∇				∇				∇	•	13	A	
12	•	•	∇							∇	•	•	11	B
10				∇	•	•	•	∇					9	A
8	∇				∇	•	∇					∇	7	B
6		∇	•	•	•	•	•	•	•	•	∇		5	A
4			∇	•	∇	•	∇	•	∇				3	B
2	•	•	•	•	•	•	•	•	•	•	•	•	1	A

Working flat using the chart above, an example of the written instructions would be:

1. A - (RS) Knit.

2. A - (WS) Purl.

3. B - K2, (sll, k1) x 3, sll, k2.

4. B - K2, (sll, p1) x 3, sll, k2.

5. A - K1, sll, k7, sll, k1.

6. A - K1, sll, p7, sll, k1..

7. B - Sll, k3, sll, k1, sll, k3, sll,

8. B - Sll, k3, sll, p1, sll, k3, sll.

... and so on ...

We hope this guide has given you an insight into mosaic knitting but as always we are here to help should you need it. Just drop us an email at team@verde.uk.

Sustainable kits and yarns

