



Enjoy ergonomic health benefits of this stand up workstation. The height adjustable workstation or cart allows the monitor to be perfectly positioned to your liking while sitting or standing. Its i standing desk at very economical cost. Each multi-functional workstation includes a sliding keyboard shelf and CPU holder (optional). Designed with 4 casters, 2 of which are lockable, this cart can be to be stationed in one area or wheeled wherever necessary at home, office, school.

Optional Accessories



Basket



Printer Shelf



CPU Shelf

Computer Mobile Workstation Cart

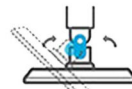


This mobile stand up workstations help you get rid of the sedentary work habit, relieve pressure along your back and reduce strain on neck and shoulders. you can raise and lower the desk smoothly from 57" to 69.3" easily.

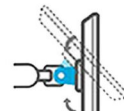


Rotation
-180° to +180°

The height adjustable mount allows the monitor to be perfectly positioned to your liking while sitting or standing. It's great for office, medical station, warehouses, shopping mall, trade show etc.



Swivel
-45° to +45°



Tilt
-45° to +45°



Sleek appearance blends into any home décor; the measurements 25.39" x 14.37" x 0.66" of standing desk surface has plenty of space which can be used for any standard sized mouse, external keyboard, reading books etc.





**TWO
Different
Screen
Placement
Setup**

Get more done. With Two Screens

**Horizontal Screen
Placement**



MCT09-B

**Vertical Screen
Placement**



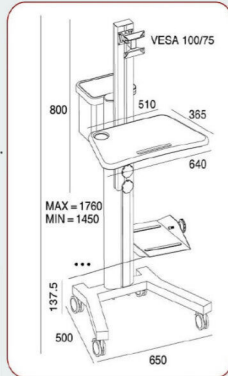
MCT09-A

MCT-09

- ➔ Product Size: 620(L)*500(W)*1450-1760(H)mm.
- ➔ Color Silver.
- ➔ Max Capacity 70Kgs.
- ➔ Material Aluminium column. +Metal Base +MDF Shelf for keyboard and mouse.
- ➔ Features: Cable Management.
- ➔ Height adjustment for Sitting and Standing position.
- ➔ Optional Parts: CPU holder.
- ➔ Printer Shelf.
- ➔ Basket.
- ➔ Arms to add on to 2 monitor, 3 monitor, 4 monitor and 5 monitors.



➔ 4 Electrical point on pole CPU holder Basket Handle



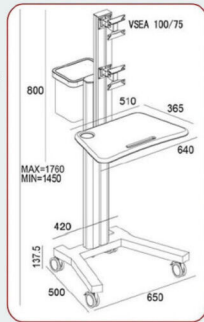
VESA Standard
75x75mm
100x100mm

Adjustable
Screen
Height

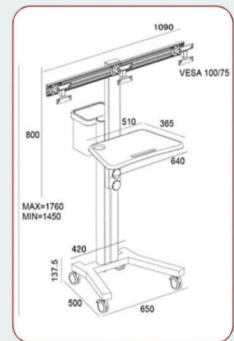


MCT-09-a: Dual Monitor Mobile Computer Trolley (Vertical)

- ➔ Product Size: 620(L)*500(W)*1450-1760(H)mm.
- ➔ Color Silver.
- ➔ Max Capacity 100Kgs.
- ➔ Material Aluminium column. +Metal Base +MDF Shelf for keyboard and mouse.
- ➔ Features: Cable Management.
- ➔ Height adjustment for Sitting and Standing position.
- ➔ Optional Parts: CPU holder, Printer shelf, Basket.

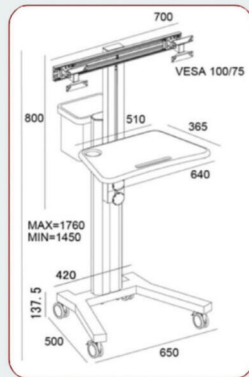


MCT-09-c: Triple Monitor Mobile Computer Trolley



MCT-09-b: Dual Monitor Mobile Computer Trolley

Product Dimensions :



MCT-09-d: Four Monitor Mobile Computer Trolley

