

demaqi 德玛奇

To be irreplaceable, must be different

# INSTRUCTION MANUAL

## Instructinmanual

### Mumultifunctional Electric Pressure Cooker

Zhongshan LaiBao Electric Appliance Co.,Ltd. (manufacturing)  
Add:2/F,No,18,Fengchao Road,Dongfeng Town,Zhongshan City,  
Guangdong Province,China  
Service Tel:400-611-5565

Please read this "Instruction Manual" carefully before using the product, and keep it in a safe!  
All contents of this material have been carefully proofread, and the company reserves the right to  
interpret any typographical errors or misunderstandings in content.  
If the product has technical improvement, it will be compiled into the new version of the manual without  
notice, and if the appearance and color of the product are changed, the actual product shall prevail.

According to the administrative measures for the restriction of the use of Hazardous substances in electrical and Electronic products

Information on the content of hazardous substances in products sold.

Hazardous substances Parts (Model)	Lead (pb)	mercury(Hg)	cadmm(Cd)	Six-valent inscriptin (Cr(VI))	Polydest biphenyls (PBB)	Polydesert diphenyl anhydride (PBDE)
Plug the power cord	x	o	o	o	o	o
Temperature melting cutter	x	o	o	o	o	o
Control board components	x	o	o	o	o	o
Power strip assembly	x	o	o	o	o	o
Temperature sensor	x	o	o	o	o	o
Pressure switch	x	o	x	o	o	o
Heating disc	x	o	o	o	o	o
Relays	x	o	X	o	o	o
Proximity switch	o	o	X	o	o	o

○ Indicates that the content of the hazardous substance in all homogeneous materials of the part is below the limit requirements specified in the GB/T 26572-2011 standard.

× Indicates that the content of the hazardous substance in at least a homogeneous material of the component exceeds the limit requirements specified in the GB/T 26572-2011 standard due to prior art and process limitations

According to the requirements for the restriction of the use of harmful substances in electronic and electrical products in China (SJ/TU3642014 and related regulations), this product meets the following environmental protection use period.

Note: The environmental protection use period indicated in this label refers to the use period under normal use conditions and temperature, humidity, and does not include consumables.



whole machine

## Food Hygiene Information and Declaration of Conformity Identification

Product Name: ElectricPressureCooer

Product type: Food Contact

Part name	Material	Execution standards	remark
Inner pot	PTFE coating / aluminum6063	GB4806.10-2016	The temperature at which the coating is used shall not be higher than380T
Stainless steel pot lid, hex nut, spring pad, bend pad, glass cover screw, steel lid screw, glass cover stainless steel hem	12Cr18Mn9Ni5N	GB4806.9-2016	Avoid contact with acidic foods
Float sealing ring, pot lid sealing ring, pressure limiting valve sealing ring 1, exhaust pipe silicone	Silica gel	GB4806. 11-2016	/
Measuring cup, rice spoon, soup spoon	PP	GB4806.6-2016 GB4806.7-2016	/
Negative pressure valve seat, anti-blocking nut, exhaust pipe, float	Aluminium6063	GB4806.9-2016	Do not come into contact with acidic foods
Glass cover	Toughened glass		/

### Security considerations

Fire and electric shock are present in all electrical appliances and may cause personal injury, please read this manual carefully before use and follow the following safety measures.

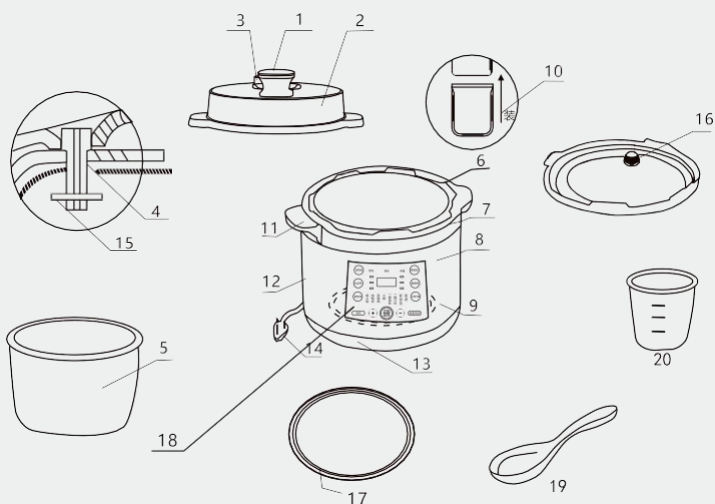
1. Check whether the voltage you use is consistent with the rated voltage of the product.
2. The appliance is not intended to be caused by physical, sensory or mental impairments or lack of experience and knowledge of use (including children) unless they are supervised or instructed by a person responsible for their safety in relation to the use of the appliance.
3. To prevent electric shock, never immerse the main body, power cord or plug in water or rinse with water, cut  
Do not use this unit in bathrooms, near water sources, outdoors or in wet areas.
4. When using the multi-function electric pressure cooker, please operate it on the surface of the water platform, do not on the carpet or wool  
Use this product on countertops that are not heat-resistant such as towels and plastics to avoid fire.
5. This product is a class I electrical appliance, please ensure that the grounding wire is well grounded before use to avoid leakage accidents
6. Do not insert metal chips, pins, wires and other items into the gap of the electric pressure cooker to avoid electric shock and injury.
7. When using the multifunctional electric pressure cooker, please arrange the power cord to prevent the power cord from overhanging or  
Tripping people.
8. Do not hang the power cord on the edge of the table or on a hot surface to prevent damage to the power cord and cause leakage  
Electricity and other dangers.
9. When any electrical parts of the product are damaged or faulty, do not continue to use this product, please send it to the after-sales service department of the manufacturer for replacement or repair.
10. Please do not move the product immediately after cooking, you must wait for the shell to cool down, please hold up the left and right handles of the pot body when moving, and do not lift the lid handle.
11. Do not use this product to cook food that may cause clogging of the vents. Such as leaf-like foods (seaweed, cabbage) or ribbon food (kelp), debris food (such as corn residue) to avoid causing trouble or causing damage to utensils.
12. Do not put in foreign objects, and it is forbidden to insert metal chips, needles and other foreign objects in the gap: it may cause electric shock or cause abnormal movements.
13. No heavy objects shall be added to the pressure limiting valve or replaced by other items.
14. The contact surface between the bottom of the inner pot and the heating plate should be kept clean.
15. It is strictly forbidden to use other pot lids when heating to avoid poor performance or safety hazards
16. After cooking, until the pressure is fully released, the lid can be opened under the float  
The lid is difficult, do not open it forcibly, otherwise it may cause burns or other injuries.
17. The inner pot that comes standard with this product is forbidden to be used for other purposes, or to collide with a hard object to avoid it  
Cause deformation of the inner pot and affect normal use.
18. This multi-function electric pressure cooker can only use the standard inner pot to avoid overheating and abnormal phenomena.

- 19.If the sealing ring is damaged or the inner pot is deformed, do not use the pressure cooker. Replace them with dedicated sealing rings or inner pots purchased from the manufacturer or repair department.
20. Do not damage the sealing ring, do not use other gaskets as substitutes, and do not use tension rings to enhance sealing.
21. Do not obstruct the area around the lid and the outer pot sealing area with a cloth, as it may affect safety performance.
22. When venting using the vent button, do not place your hands or face close to the pressure limit valve exhaust to avoid burns.
- 23.During the product's operation, the lid's temperature is relatively high; do not touch it, as it may cause burns or other injuries.
- 24.While in operation, avoid placing your hands near the pressure limit valve to prevent burns. Do not cover the pressure limit valve with a cloth or similar material during the cooking process.
- 25.The total amount of food and water must not exceed the maximum scale, as excess food might not cook properly or cause malfunctions.
- 26.When cooking foods that tend to expand or block, the total amount must not exceed 3/4 of the maximum scale, as this may result in accidents.
- 27.Regularly inspect the steam release pipe of the pressure regulator to ensure it is not blocked.
- 28.After extended use, the surface coating of the inner pot may change color. However, this has no adverse effects on usage or health, so you can continue using it with confidence.
- 29.The inner pot's surface is coated; do not use metal or abrasive cleaning tools to wipe it, as this might scratch the coating and affect its non-stick performance.
- 30.Certain surfaces of the appliance can become very hot during operation.
- 31.The surfaces can become hot during use.
- 32.The appliance should not be submerged in water.
- 33.If excessive venting occurs around the lid, which is abnormal, the safety pressure release device is functioning to protect. Immediately unplug the power plug, stop using the appliance, and send it to our repair center for inspection.
- 34.Do not use components from manufacturers other than those specified, as this could pose risks or potential hazards to users.
- 35.When cleaning and not in use, unplug the plug. Before installing, disassembling components, and cleaning the appliance, ensure that it has cooled down completely.
- 36.The appliance should be supervised during use, and children and those who cannot take care of themselves should not approach it.
- 37.Do not use the appliance for any purpose other than its intended use.
- 38.Store the appliance carefully and ensure that children under 8 years of age cannot access the appliance or its power cord.
- 39.Watch over children and make sure they do not play with the appliance.
- 40.Cleaning and maintenance of the appliance should not be done by children without supervision.
- 41.The appliance should not be operated under external timers or independent remote control systems.
- 42.This appliance is suitable for household and similar uses, such as:Staff kitchens used in shops, offices, and other work environments.Farms.Inns, motels, and other residential environments,bed and breakfast establishments.
- 43.Do not use outdoors.
- 44.Keep this manual for reference."

## Product Display




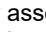
## Product Illustrations

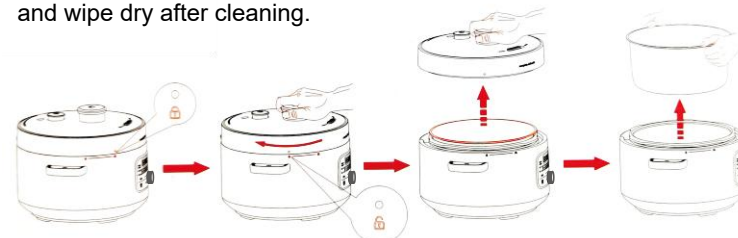


- |                  |                  |                      |                        |
|------------------|------------------|----------------------|------------------------|
| 1. Handle        | 6 Outer Pot      | 11. Fixed Handle     | 16 Anti-blocking nuts  |
| 2. Lid           | 7. Middle Ring   | 12. Casing/Shell     | 17 Sealing Ring/Gasket |
| 3. Exhaust Valve | 8. Control Panel | 13. Base             | 18 Control Panel       |
| 4. Float Valve   | 9. Heating Plate | 14. Power Cord       | 19 Rice Spoon          |
| 5. Inner Pot     | 10. Drip Tray    | 15. Float Valve Seal | 20. Measuring Cup      |

Model	DMQ-19D00F10	Rated Capacity	6L
Specification	220V~50HZ 1350W		
Execution Standards	GB4706.1-2005; GB4706.19-2008;		

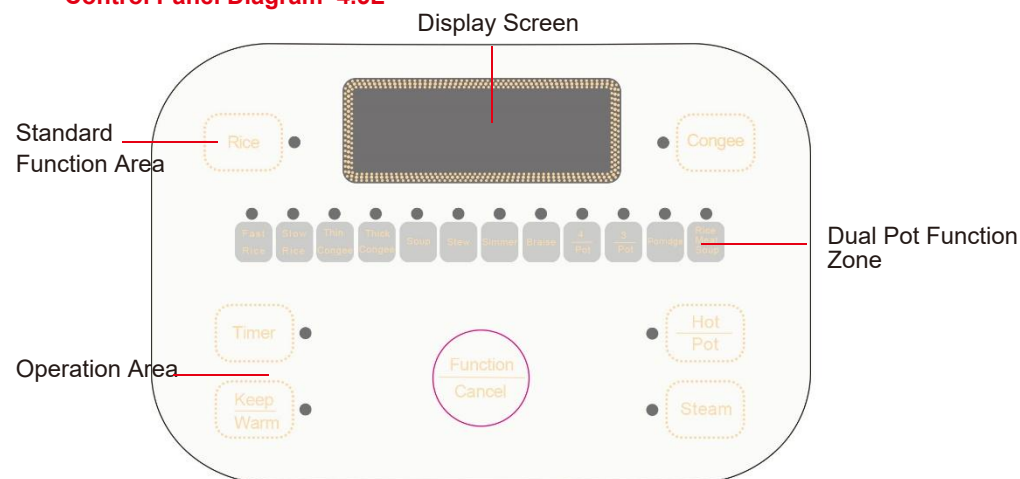
## First Time Use

1. Read the instruction manual carefully before use.  
Please take out all the packaging items in the product for the first time and check whether the accessories are complete. (Rice spoon XI, measuring cup XI, power cord XI, mandarin duck bile XI, alloy bile XI, glass cover x1)
2. Hold the lid handle and turn the lid clockwise so that the lid is left side “” pattern, alignUnlocking on the left side of the large body assembly “” pattern, Then go straight up and remove the lid, and then take out the inner pot, And use a soft cloth to clean the lid, inner pot, glass lid, rice spoon, measuring cup and other parts, and wipe dry after cleaning.

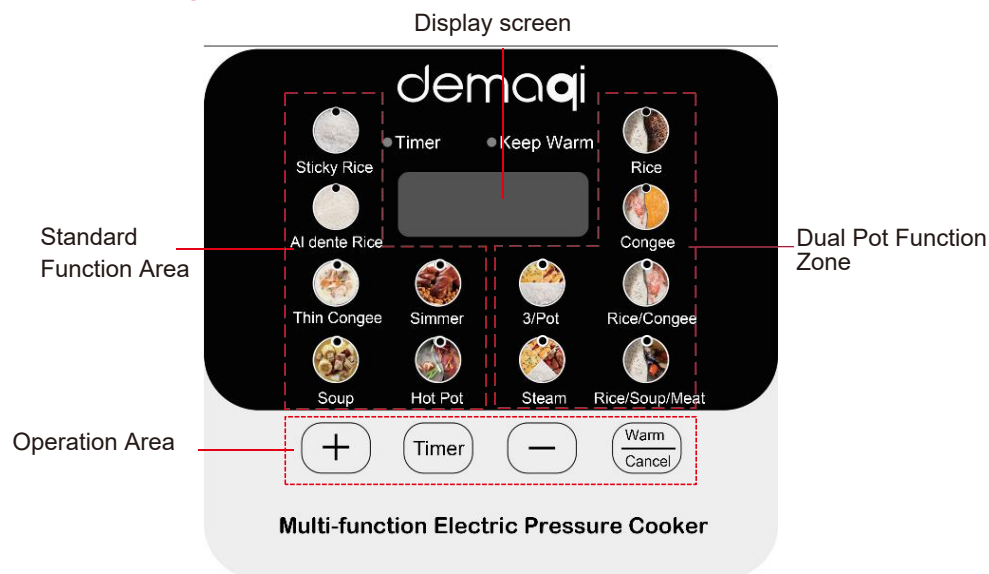


4. Clean the inner pot and dry it with a dry soft cloth before putting it into the main machine.
5. When heating for the first time, there will be a slight smell and a slight smoke, this is normal, with the use of the situation will not be like this, during use, if you hear a "click" sound, it is due to the heat change of the heater, not equipment failure, please use it with confidence.

## Control Panel Diagram 4.5L



**Control Panel Diagram 6.0L**



**Key Description**

(1)Function key: After powering on, the 4-digit digital display "0000" is in standby state, and the required needs are selected according to the ingredients Function menu (color button is function menu), the selected function menu indicator and display flash for 3 seconds to enter the working state, while the display shows the default time of the current function menu.

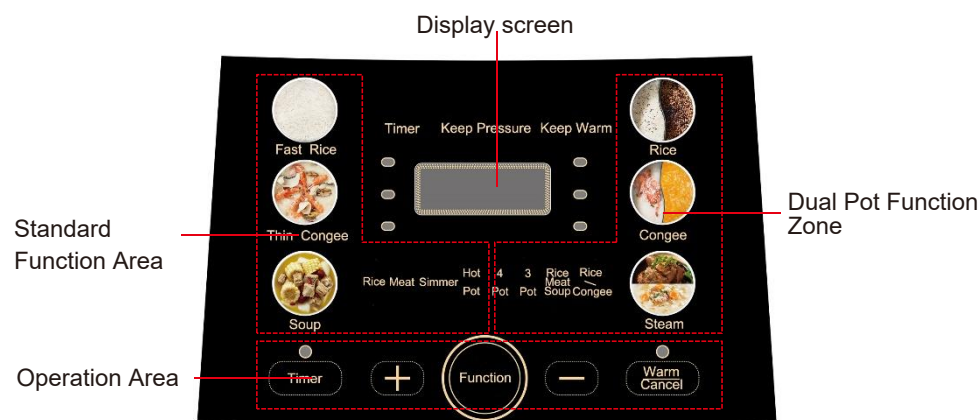
(2) Decrease / - Key (6L): Used to decrease the heat level and time settings

(3) Increase / + Key (6L): Used to increase the heat level and time settings.

(4) Knob-style Function Key (4.5L): Rotate the knob left or right to select a function menu and adjust the heat level and time settings with incremental or decremental changes.

Keep Warm / Cancel Key: In a selected function menu or during the working state, press the "Keep Warm / Cancel" key to cancel the current working state. In standby mode, pressing the "Keep Warm / Cancel" key directly activates the keep warm function. The "Keep Warm" indicator light remains on, the display screen shows "00:66," and other indicator lights turn off. The maximum keep warm time is 12 hours, and the keep warm function can be canceled by pressing the "Keep Warm / Cancel" key during the keep warm process. (Note: The dual pot hotpot function menu does not have a keep warm function.)

**Control Panel Diagram 6.0L**



(5) Timer Key: After selecting a function menu, press the "Timer" key to activate the timer indicator light. Adjust the timer using the "+" or "-" keys or by rotating the "knob." Once the timer is set, the selected function and "Timer" indicator light remain on, and the display screen starts counting down to show the remaining timer time. During the timer countdown, if you need to cancel the timer, press the "Keep Warm / Cancel" key to return to standby mode. The maximum timer duration is 24 hours. (Note: The dual pot hotpot function does not support timer settings.)

(6) Dual Pot Dual Pot Hotpot Key: In an open lid state, press the "Dual Pot Hotpot" key and wait for 3 seconds to enter the working state. Adjust the heat level using the "+""-"" keys for 6L and rotate the "knob" for 4.5L. There are a total of 6 heat levels, with P6 being the highest and P1 being the lowest heat level.

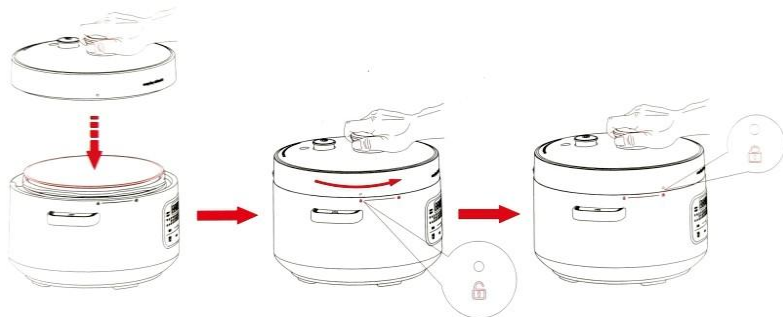


1. After placing the ingredients into the inner pot, vertically insert it into the main unit. Before inserting, ensure that the bottom of the inner pot and the surface of the heating plate are wiped clean with a dry cloth, leaving no residue. After placing it in the main unit, gently rotate the inner pot to ensure good contact between the inner pot and the heating plate, as shown in the diagram below.



**Tips:** Food and water shall not exceed the maximum scale of the inner pot, food that is easy to expand in water shall not exceed half of the rated capacity of the inner pot, and food and water shall not be less than the minimum scale of the inner pot.

2. As shown in the figure below, hold the pot lid handle and cover the pot vertically, and the “▼” pattern on the left side of the shilling pot lid. Align the unlocking “🔓” pattern on the left side of the fuselage assembly, and then rotate the pot lid counterclockwise so that the “▼” pattern on the lid aligns the closing lock on the fuselage. “🔒” pattern, lid clasped in place.



**Note:**

- (1) Before placing the lid on, please ensure that the sealing ring is installed inside the lid, and all four latches are securely inserted into the slots on the lid.
- (2) When closing the lid, if there is any resistance, please check if all components are placed in the correct direction and position. Avoid forcing the lid to close aggressively to prevent safety issues.
- (3) Place the pressure limiting valve properly, ensuring that the float is in the lowered position.

3. After powering on, the buzzer will sound once, and the display will show "0000", entering the standby state. Manually press the function key, and the indicator light of the selected corresponding function menu will flash for 3 seconds, entering the working state.
4. Once the cooking time is confirmed, wait for 3 seconds for automatic operation to begin. The indicator light of the corresponding function menu will stay on, while the indicator lights of other function menus will turn off. The display will dynamically show the countdown, and during the pressure cooking phase, it will show the remaining time. For example, "P1:15" indicates 15 minutes remaining. "P1:15" indicates 1 hour and 15 minutes remaining.
5. After the cooking process is complete, the device will automatically enter the "Keep Warm" function. The indicator light for "Keep Warm" will remain on, and the display will show "bb". After 12 hours of "Keep Warm", the device will return to the standby state. During operation, if you need to cancel cooking, press the "Keep Warm/Cancel" button to cancel and return to the standby state.

6. Unplug the power plug, hold the lid handle, and turn the lid clockwise so that the “🔒” on the left side of the lid. The pattern aligns the unlocked “🔓” pattern on the left side of the fuselage assembly, then removes the lid vertically upwards, and then takes out the inner pot.

**Note:**

(1) After cooking is completed, you can release the pressure by pressing the pressure release button. Press the button gently and release slowly to release pressure in a series of short bursts, avoiding prolonged pressure release to prevent liquid from splattering. Wait for the float to drop before opening the lid. If the lid is difficult to open, do not force it open or have multiple people open it, as it may cause burns or other injuries.

(2) If cooking liquid foods (such as porridge, soups) or using the "Yin-Yang" pot, do not release pressure immediately after cooking. You must wait for natural cooling until the float drops before opening the lid. Releasing pressure using the pressure release button in this case may cause liquid to be released from the pressure limit valve and the "Yin-Yang" pot may experience liquid splattering.

**Tips:**

- (1) During the keep warm mode, if you need to cancel it, press the keep warm/cancel button to return to standby mode.
- (2) The keep warm process cannot be paused, only stopped or canceled.
- (3) The product has power-off memory. If the power is lost after entering the working state and power is restored within about 15 minutes, it will resume the previous working state. If power is restored after more than about 15 minutes, it will return to standby mode.

### Mandarin Duck Dual Hot Pot Mode:

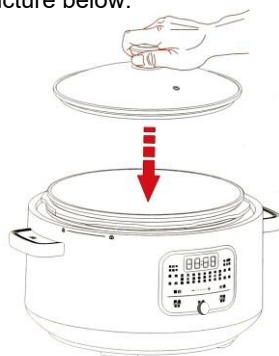
1. Put the ingredients in the inner pot vertically into the host, wipe the bottom of the inner pot and the surface of the heating plate with a dry cloth before putting it in, no debris left, and gently rotate the inner pot after putting it in to ensure good contact between the inner pot and the heating plate.

(Mandarin duck gallbladder and regular gallbladder can both use the mandarin duck hot pot function)



Tips: Food and water must not exceed the maximum scale of the inner pot, nor be less than the minimum scale.

2. In hot pot mode, the lid needs to be opened for cooking. When closing the lid, an accessory glass lid is required. Hold the glass lid handle vertically and cover the glass lid vertically as shown in the picture below.



Tips: When cooking hot pot, please use wooden spoons, wooden spatulas or heat-resistant plastic spatulas to turn the food. Do not use metal knives, spoons or spatulas to prevent damage to the non-stick coating on the surface of the inner pot.

3. After the power is turned on, the buzzer will sound once, and the display will be "0000", and it will enter the standby state. Manually press the "Mandarin Duck Hot Pot" button on the operation panel, the indicator light of the "Yuanyang Hot Pot" button lights up and flashes, and the display shows the default firepower "P1" flashes for 3 seconds to start working, and the firepower adjustment can be adjusted to the maximum by pressing the "+" button P6, press "-" key to adjust to P1 minimum.

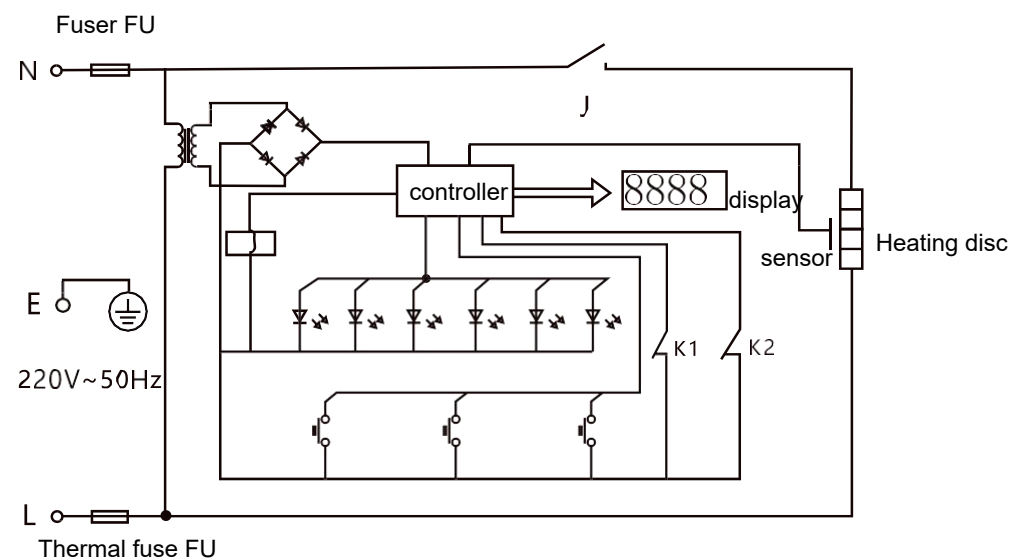
4. At work, if you need to cancel the Mandarin Duck Hot Pot mode, press the "Keep Warm/Cancel" key to cancel and return to standby state.

### Tips:

(1) The heat preservation key in hot pot mode is not adjustable, and the P1 gear can be manually adjusted for heat preservation.

### Circuit Schematic

Computer type





## Introduction to the Special Function of Mandarin Duck Dual Pot

Tips: The special function of mandarin duck gallbladder needs to use mandarin duck gallbladder cooking, the amount of ingredients and time in the introduction are for reference only, please adjust according to actual needs.

### 1. Two kinds of rice /



White rice/multigrain rice   Strong rice/soft glutinous rice   Pearl Rice/Cat Tooth Rice

### 2. Two kinds of porridge /



White Rice Congee/Eight Treasure Congee



White rice porridge/millet porridge



Red bean porridge/mung bean porridge

### 3. Rice/porridge /



White rice/seafood porridge



White Rice/Red Bean Porridge



White rice / thick porridge

### 4. Rice/soup /



White Rice/Braised Pork



White Rice/Stewed Pork Knuckle



White Rice/Braised Bean Curd Stick



White Rice/Corn Rib Soup



White Rice/Red Ginseng Chicken Soup



White Rice/Black-bone Chicken Soup with Red Dates



5. Three in one pot



White rice/(steamed broccoli/chicken wings with soy sauce)



Farmhouse Chicken Soup/(Sausage/Mushroom Chicken)



Stewed pork trotters/(steamed meat/steamed eggs)

6. Four in one pot



Mandarin Duck Gallbladder + Mandarin Duck Whole Plate



White rice/braised pork/steamed egg/steamed sweet potato



White rice/millet porridge/steamed corn/steamed sweet potato

Fault Analysis and Elimination

Error	Reason	Solution
The screen shows E1	Sensor break	Send after-sales repair
The screen shows E2	Sensor short	
The screen shows E3	Over temperature	
The screen shows E4	Pressure switch failure	
No power	The power cord plug is not inserted in place	Re-insert the plug or replace the outlet
	Fuse blown	Send after-sales repair
	Control board assembly damaged	Send after-sales repair
Not heated	Circuit fault	Send after-sales repair
Can't close the cover	Seal ring not assembled in place	After installing the sealing ring in place, close the cover
	Misplaced lid	Align the position of the groove on the back of the body and then screw on
can't open the cover	Pressured in pot	Rotate the cover after the float has dropped completely
	Float stuck	Tapping the lid has no effect, send it for after-sales repair
Pot lid assembly Leaking air	Broken lid seal	Replacing the lid seal
	Sticky foreign matter	Clean the lid seal
	Damaged float seal	Send to maintenance point to replace float seal ring
	Float sealing ring sticks foreign matter	Clean the float seal
	Float assembly not installed	Send after-sales maintenance

## Cleaning & Maintenance

Before cleaning the product, please make sure that the electric plug is unplugged to avoid leakage or accidental activation of the product, and clean it after a while.

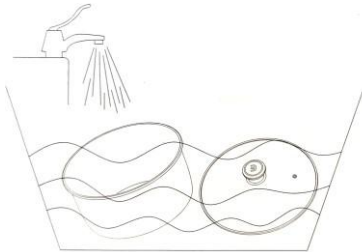
1. Cleaning of the whole machine: Just wring out the outer surface of the whole machine with a clean damp cloth and wipe it. Do not place the entire center axis. Do not foretell Mm as it will damage the surface. (It is recommended to clean on the same day of use.)



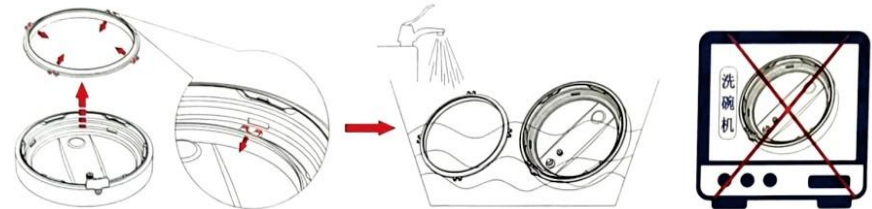
2. Cleaning of the outer pot: Regularly wring out the inner wall of the outer pot and wipe it with a clean damp cloth, and then dry the surface with a dry towel. Do not wash the inside of the outer pot directly with water!



3. Cleaning of the inner pot and glass cover: the inner pot and cover can be soaked in water or rinsed directly with water.

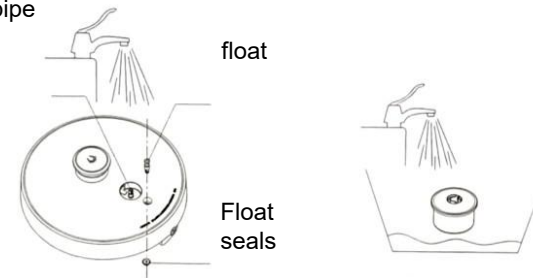


4. Cleaning of the pot cover assembly: the disassembly and assembly of the sealing ring is shown in the figure below. First, pull out the four buckles on the pot cover sealing ring from the stainless steel pot cover towards the center one by one, then take out the sealing ring, and then use diluted medium Clean the sealing ring and the lid assembly separately with mild detergent, and finally dry it with a dry soft cloth. Do not throw the lid assembly directly into the dishwasher!



5. Cleaning of the float, exhaust pipe and pressure limiting valve: the exhaust pipe can be washed directly with water, the float can be disassembled for cleaning, just pull out the float sealing ring that is engaged with the float, and then rinse with clean water to clean Then buckle the float sealing ring into the float, as shown in the figure below. The pressure limiting valve can be directly soaked in water or rinsed with water, and then wiped dry with a soft cloth.

exhaust pipe



6. Cleaning of other accessories: rice spoon, soup spoon, measuring cup, and water collection box, please wash with diluted German neutral detergent and dry with a dry soft cloth.

**Notice:**

1. Do not soak or directly shower any live parts such as the main unit and power cord with water.
2. Do not expose the product and its accessories to the sun.
3. Do not put the lid assembly in the dishwasher for cleaning.
4. Do not use volatile oil, alcohol, thinner, etc. to clean the machine, otherwise the product may be damaged.
5. Do not clean or scrub the inner pot with hard objects such as steel wool.
6. Never use metal or other sharp utensils on the inner pot, as this will damage the non-stick coating, use a wooden or plastic spatula.

**Maintenance:**

1. Please wipe with a clean damp cloth after wringing out.
2. Please wipe off the oil stains with diluted kitchen neutral detergent.
3. After using the cleaner, it must be rinsed and dried with a dry soft cloth.
4. If food splashes into the gap of the main body, please use a toothpick to remove it.
5. Please clean and clear the water collection tank, pressure limiting valve and float regularly, and the table where the product is placed should also be cleaned regularly.
6. When the machine is not in use for a long time, please unplug the power cord.

Pay Attention

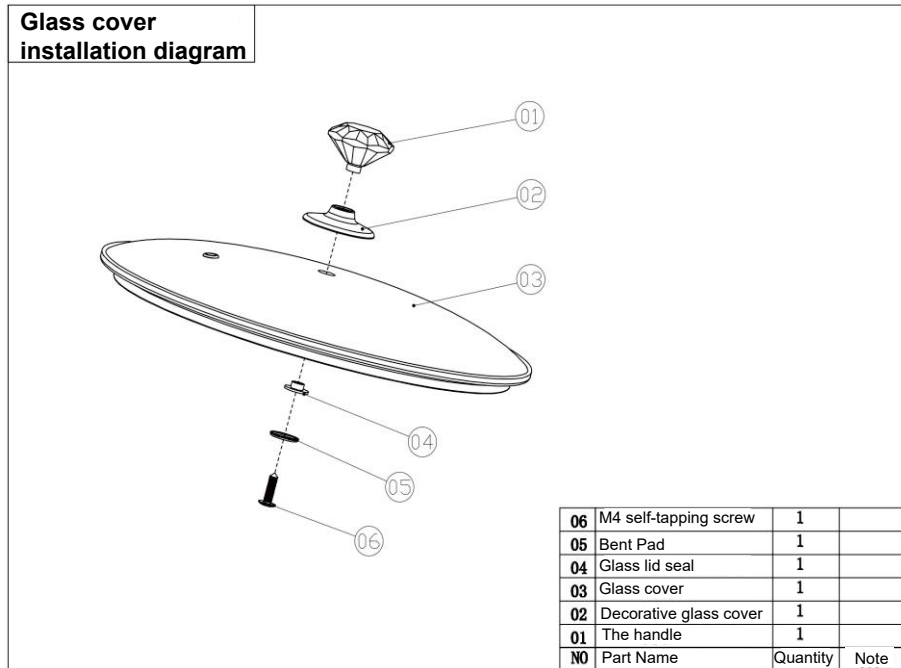


Be environmentally friendly!  
 Follow local regulations: put discarded electrical products and equipment into appropriate waste recycling stations. Be environmentally friendly!  
 Follow local regulations: put discarded electrical products and equipment into appropriate waste recycling stations.

Dear Users,

Thank you for choosing the "Demaqi" household appliances produced by our company. You will receive warm, timely and satisfactory service. This machine can enjoy the whole machine warranty for one year from the date of purchase. In order to protect your rights and interests, please choose a formally authorized franchisee to purchase. In order to protect your legitimate rights and interests, please carefully read the "Instruction Manual", "User Service Guide" and warranty regulations formulated by the company in accordance with the "Consumer Rights Protection Law of the People's Republic of China". Before using this product, you must abide by the "Dema Qi" products, so that you can use "Demaqi" products more satisfactorily.

During the use of the product, if there is a fault and needs to be repaired, please send an email to [service@demaqi.com](mailto:service@demaqi.com) in time, or follow the official facebook page, we will serve you wholeheartedly





## Safety Precautions

Fire and electric shock exist in all electrical appliances and may cause personal injury. Please read this manual carefully before use and follow the following safety measures.

1. Check whether the voltage you use is consistent with the rated voltage of the product
2. The appliance is not intended to be used by persons (including children) with reduced physical, sensory or mental capabilities or lack of experience and knowledge, unless they have been given supervision or instruction in use of the appliance by a person responsible for their safety.
3. To prevent electric shock, do not immerse or wash the main body, power cord or plug in water, and do not use the unit in the bathroom, near water sources, outdoors or in wet areas.
4. When using a multi-functional electric pressure cooker, please operate it on a horizontal platform. Do not use this product on carpets, towels, plastic and other non-heat-resistant surfaces to avoid fire.
5. This product is a Class I electrical appliance, please ensure that the grounding wire is well grounded before use to avoid leakage accidents
6. If the supply cord is damaged, it must be replaced by the manufacturer, its service agent or similarly qualified persons in order to avoid a hazard.
7. When using a multi-function electric pressure cooker, please arrange the power cord to prevent the power cord from hanging or causing people to trip.
8. Do not hang the power cord on the edge of the table or on a hot surface, in order to prevent damage to the power cord and cause dangers such as electric leakage.
9. When any electrical part of the product is damaged or faulty, the product cannot be used any longer. Please send it to the after-sales service department of the manufacturer or distributor for replacement or repair.
10. When the product is exhausting, please do not put your hands or face close to the exhaust port to avoid burns.
11. After cooking, please do not move the product immediately. You must wait for the shell to cool down first. When moving, please hold the left and right handles of the pot body, and do not lift the handle of the pot lid.
12. Do not use this product to cook food that may cause the vent hole to be blocked. Such as leaf-shaped food (seaweed, cabbage) or strip-shaped food (kelp), fragmented food (such as corn dregs), so as not to cause accidents or cause damage to utensils.
13. Do not put foreign objects, and it is forbidden to insert metal chips, needles and other foreign objects in the gap: It may cause electric shock or abnormal operation.
14. Do not add any weight to the pressure limiting valve or replace it with other items.
15. The contact surface between the bottom of the inner pot and the heating plate should be kept clean.
16. It is strictly forbidden to use other pot lids when heating, so as not to cause poor performance or potential safety hazards
17. After cooking, until the pressure is fully released, the red float will drop down to open the lid. If it is difficult to open the lid, please do not open it by force, otherwise it may cause burns or other injuries.
18. Do not use the standard inner pot of this product for other purposes, or hit the inner pot with hard objects, so as not to cause deformation of the inner pot and affect normal use.
19. This multifunctional electric pressure cooker can only use the standard inner pot to avoid overheating and abnormal phenomena.
20. If the sealing ring is damaged or the inner pot is deformed, please do not use the electric pressure cooker. It must be replaced with a special sealing ring or inner pot purchased from the manufacturer or maintenance department.
21. The sealing ring cannot be damaged, it cannot be replaced by other rubber rings, and the tension ring cannot be used to increase the sealing
22. It is forbidden to use a rag to block the periphery of the joint between the lid and the outer pot, so as not to affect the safety performance.
23. When pressing the exhaust button to exhaust, do not put your hands or face close to the exhaust port of the pressure limiting valve to avoid burns
24. During the working process of the product, the temperature of the pot cover is high, so do not touch it, otherwise it may cause burns or other injuries.
25. When working, keep your hands away from the pressure limiting valve to avoid burns. During cooking, do not cover the pressure limiting valve port with a rag or the like.
26. The total amount of food and water should not exceed the maximum scale, otherwise the food may not be cooked properly, or cause malfunction.

27. When cooking food that is easy to swell or block, the total amount should not exceed 3/4 of the maximum scale, otherwise accidents may occur.
28. The steam discharge line from the pressure regulator must be checked periodically to ensure it is not blocked.
29. After a long time of use, the surface coating of the inner pot may change color, but there is no adverse effect on use and health. Please use it with confidence.
30. The surface of the inner pot is coated. Do not use metal or rough cleaning tools to wipe it, and do not scratch the coating and affect the non-stick effect.
31. During operation of the appliance, some surfaces are very hot.
32. The surface becomes hot during use.
33. The appliance must not be immersed in water.
34. If there is a large amount of exhaust around the lid, it is an abnormal phenomenon. At this time, the safety pressure relief device is protected. Please unplug the power plug immediately, stop using it, and send it to the maintenance department of our company for inspection.
35. Please do not use components from non-designated manufacturers, which will cause harm to users or pose potential dangers.
36. Please unplug the plug when cleaning and not in use, and make sure the appliance is completely cool before installing, removing parts and cleaning the appliance.
37. When using this appliance, someone should monitor it, and keep children and people who are unable to take care of themselves close to the appliance.
38. Do not use for other purposes.
39. Take good care of the appliance, and keep the appliance and its power cord out of reach of children under the age of 8.
40. Children should be supervised to ensure that they do not play with the appliance.
41. Cleaning and maintenance of utensils should not be done by children without supervision.
42. The appliance is not to be operated by means of an external timer or an independent remote control system.
43. This appliance is suitable for household and similar purposes, such as:
  - Staff kitchens for shops, offices and other working environments
  - Farm
  - Inns, motels, and other residential-type environments
  - Bed and (next day) breakfast environment.

## First Time Using

1. Please read the instructions carefully before use.
2. For the first use, please take out all the packaging items in the product and check whether the accessories are complete, (rice spoon x1, measuring cup x1, power cord x1, mandarin duck gallbladder x1, alloy gallbladder x1, glass cover x1)
3. Holding the lid handle, turn the lid clockwise so that the pattern on the left side of the lid aligns with the pattern on the left side of the body assembly, then take out the lid vertically upwards, and then put the inner pot. Take it out, and use a soft cloth to clean the pot lid, inner pot, glass lid, rice spoon, measuring cup and other parts, and wipe dry after cleaning.



4. Only put the cleaned inner pot into the main unit after drying it with a dry soft cloth.
5. When heating for the first time, there will be a slight smell and a little smoke. This is a normal phenomenon. This will no longer happen after use. During use, if you hear a "click" sound, it is due to the heat of the heater. Change, not equipment failure, please rest assured to use.