

Read ALL Instructions Prior to Installation!

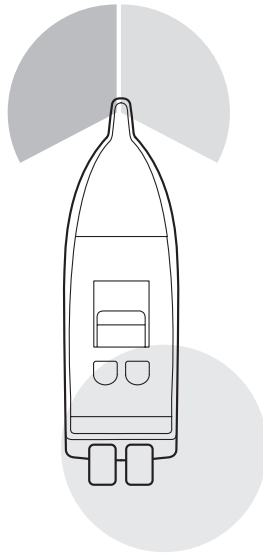
LightArmor Light Base 910R2, 910T2, 910V2

**Must Print this
Page at 100%**

CAUTION

To prevent personal injury, always disconnect the power source when installing or servicing this product. Always remove the boat from the water before using 120 VAC power tools.

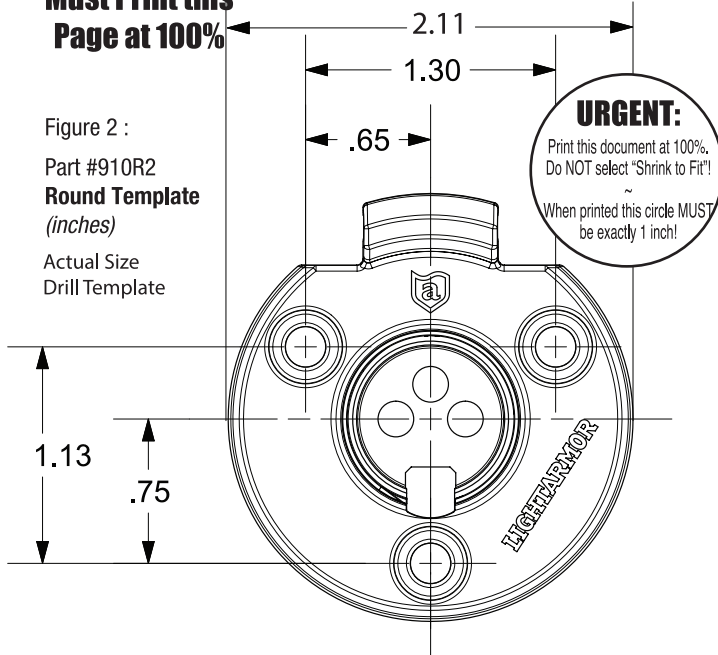
Figure 1



Note: For technical detailed positioning follow COLREG 72 or ABYC A-16. Figure 1 is a simplified drawing of placement of navigational lights in relationship to one another.

**Must Print this
Page at 100%**

Figure 2 :
Part #910R2
Round Template
(inches)
Actual Size
Drill Template



URGENT:
Print this document at 100%.
Do NOT select "Shrink to Fit!"
When printed this circle MUST
be exactly 1 inch!

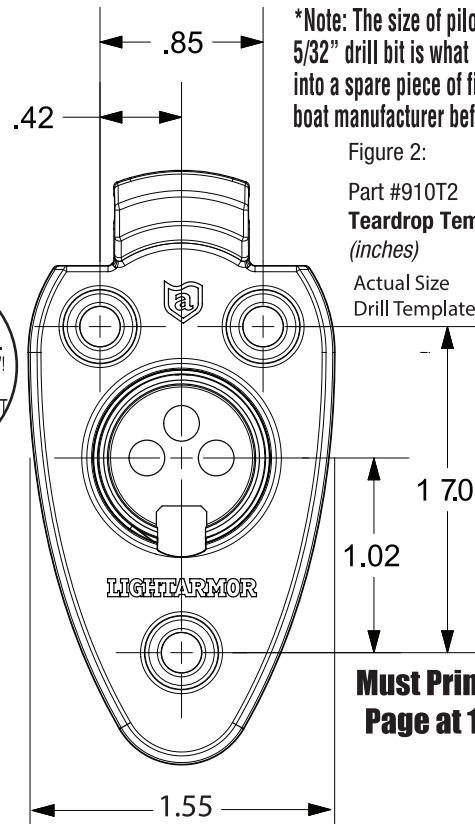
INSTALLATION INSTRUCTIONS

Note: If replacing port... unscrew old port, use Fig2 to ensure fit, mark wires & go to step 3.

1. Position the light base either on the bow for combination sidelights or the stern or gunwale for all-round lights. Be sure that the mounting surface is flat and that the selected area will accommodate the base dimensions. Base angle and position must properly place light used in base.
2. Using the template provided (Figure 2), locate the base center line parallel to the boat fore-and-aft center line and carefully mark the center installation hole and the screw holes. Drill 1-1/8" diameter hole being very careful not to crack or break the gelcoat finish. Sand to remove burrs from around the edge of the hole. (To protect paint & gel coat, apply masking tape before you drill.)
3. Wire port: On some installations you may have to connect the wires then push them back through wire hole prior to screwing down the base. (See final wiring directions below.)
4. Holes for Port: Many customers prefer using a counter sink bit to start the hole & prevent crack formation, then *drilling 5/32" pilot holes* for #10 screws. For more protection, apply masking tape prior to drilling. Apply sealant between deck and light base. Use phillips screw driver MANUALLY and only tighten until firm. **URGENT: Do NOT overtighten screws.**

*Note: The size of pilot hole for #10 screws into your fiberglass boat is up to you. 5/32" drill bit is what most customers use, but this is up to you. If in doubt, test drill into a spare piece of fiberglass or hardwood & always feel free to check with your boat manufacturer before you drill.

Figure 2:
Part #910T2
Teardrop Template
(inches)
Actual Size
Drill Template



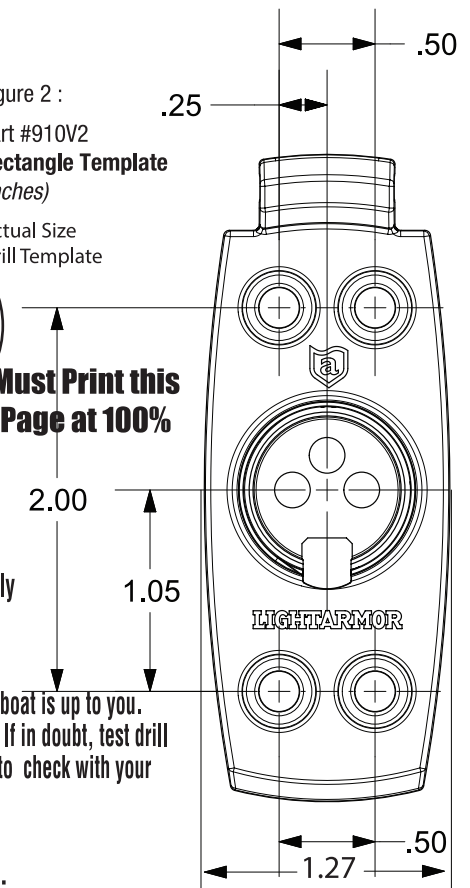
**Must Print this
Page at 100%**

Figure 2 :
Part #910V2
Rectangle Template
(inches)

Actual Size
Drill Template

**Must Print this
Page at 100%**

URGENT:
Print this document at 100%.
Do NOT select "Shrink to Fit!"
When printed this circle MUST
be exactly 1 inch!



FINAL WIRING FOR:

910R2, 910V2, 910T2 (2 wire base):

Connect the black wire to the battery ground (-) harness, using a crimp-on wire connector. Attach the remaining gray wire to the positive switched wire from the navigation light switch.

All positive wires must be fused according to light specs to protect the circuit. **MAKE SURE POWER SOURCE IS 12-VOLT D.C. ONLY.**

HIGHER VOLTAGE CAN CAUSE DAMAGE TO LIGHT AND WIRE CIRCUITRY.

Insert light pole into base and press down to make contact. Insert locking collar into base opening, rotate if necessary to push it down into base. Rotate collar until tight to hold light pole in base. Test light operation. Remove and stow light. Close cover to protect contacts when not in use.