



Rowan Engineering

Adjustable Turret Cap for Falcon T50 Scope

Thank you for your purchase. Please read these fitting instructions before attempting to fit the Turret.

Your kit should contain -

1 off Inner turret.

1 off Outer cap

1 off 1.5mm allen key.

1 off 2.0mm allen key.

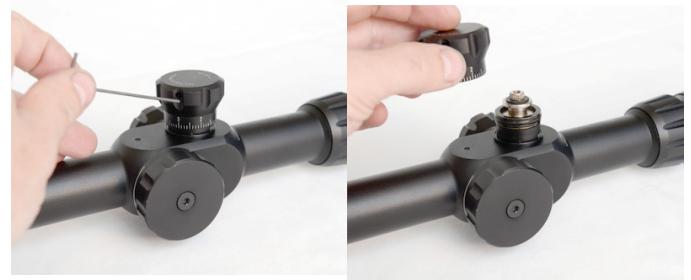
Safety first.

Observe safe practices when handling your rifle and follow the manufacturers safety instructions when doing so. Working on any air rifle can be dangerous. Seek advice where and when necessary.

Fitting.

Before removing the original turret cap, turn the turret so it is in the centre of its travel. (Normally 2 turns from the end of travel.

Loosen 3 x m3 grub screws and lift off the original turret .



Fit the inner turret on the scope and gently tighten the 3 grub screws.



Finally fit the outer cap over the inner turret and gently tighten the 3 x M4 grub screws. If a small adjustment to zero is required, simply loosen the 3 x M4 grub screws, set zero and tighten back in position. The inner turret does not normally need to be adjusted.

