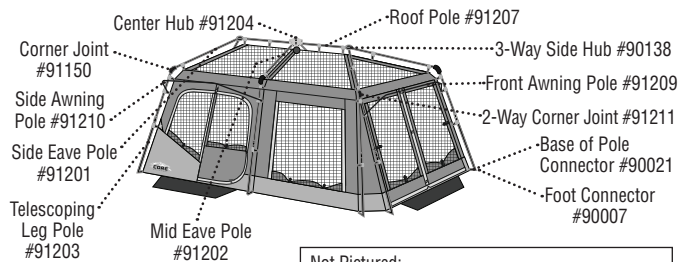


CORE® 12 PERSON INSTANT CABIN TENT - 18 x 10

Model No. 40061

Two people can easily setup this instant tent in 2 minutes or less.

Contents & Repair Parts:

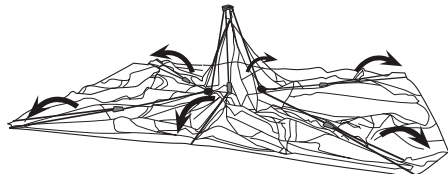


Not Pictured:

Cord-Lock #91169	Room Divider #91208
Carry Bag #91205	Reflective Guyline #91220
Rainfly #91206	

1 Prepare for Setup

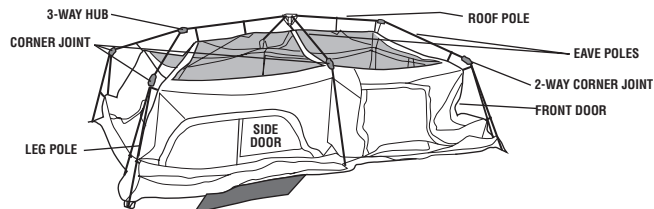
- Select a level site clear of rocks, branches, and other hard or sharp objects, to set up your tent.
- Remove all contents from bag.
- Unfold (10) leg poles from the pod shape. Unfold legs again at joints to lay tent flat. Center will stand up.



2 Lift Roof and Eave Poles

NOTE: 2 people will be needed to erect and extend the tent poles.

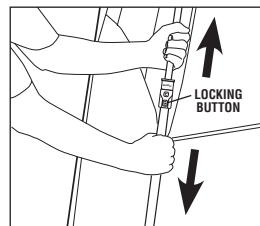
- Lift up on arm joints until eave poles at 3-way side hubs are extended.
- Grab roof poles and pull straight out to create tent's cabin shape (leg poles will angle at joints to partially stand up).



3 Extend Leg Poles

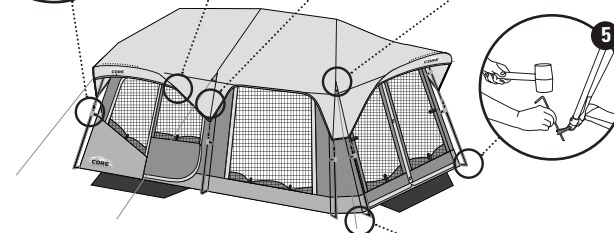
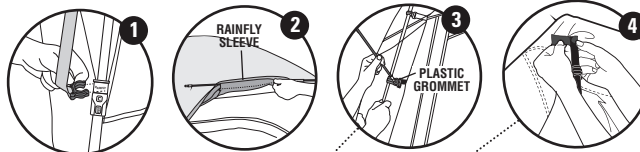
NOTE: DO NOT extend telescoping poles until all legs and ceiling hubs are elevated.

- Extend each of the (10) leg poles until the locking buttons "click," and lock the poles into place.



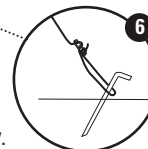
4 Attach Rainfly

- Drape rainfly over tent, placing "Core" logo over front & side door.
- Snap plastic clip attached to strap located at corner of rainfly onto the upper portion of the button box on leg pole labeled RAINFLY. (Detail 1)
- Insert shockcorded awning poles into sleeves on underside of rainfly above front door. (Detail 2)
- Insert metal end of awning pole into hole on plastic grommet located at each side of front door. (Detail 3)
- Repeat steps on side door of tent.
- Tighten straps on rainfly to secure.
- Attach (1) hook-and-loop tab on the underside of the rainfly to each pole. (Detail 4)



5 Stake Tent, Secure Ground Vents and Guylines

- Drive stakes at a 45° angle through web loop at base of tent to secure to ground. (Detail 5)
- Floor of tent should be taut when staked properly.
- Locate guylines attached to the rainfly. (Detail 6)

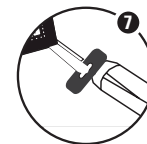


5 Stake Tent, Secure Ground Vents and Guylines (continued)

- Stake out each guyline at a 45 degree angle.
- Tighten guylines as needed by adjusting the slider up the cord.
- Stake out ground vents on either side of tent (where air intake graphics are).

6 Install Room Divider

- Hang room divider by inserting black toggles through the plastic rings on fabric loops located at the center portion of the sides of your tent, as needed. (Detail 7)



TAKE DOWN INSTRUCTIONS:

- Remove room divider from inside of tent.
- Remove all stakes from tent and guylines. Store in stake bag.
- Unhook plastic rainfly clips from leg poles.
- Unfasten hook-and-loop tabs on underside of the rainfly from poles.
- Remove awning poles from rainfly sleeve at front and side of tent. Store in pole bag.
- Detach the rainfly, and set aside.
- Push the locking buttons and retract the (10) leg poles to closed position.
- Push down on the corner joints so the tent lays flat.
- Fold the (10) poles in half at the corner joints, so they meet in the center.
- Gather folded tent poles and fabric into the center to form a pod.
- Lay pod down and roll tent to remove excess air.
- Store in carry bag with rainfly and bag of stakes.

(continued on other side)

FREQUENTLY ASKED QUESTIONS:

- **Are replacement parts available?** Yes, just call Customer Service at 1-888-775-5628 for replacement parts. All parts can be replaced.
- **The center of the tent won't stand up.** You may have a broken corner joint. Check all six of the joints (under the fabric sleeves) and call Customer Service if you need a replacement.
- **The poles are not staying extended.** Check that all ten locking buttons are popped out. Extend pole farther if button is not locked. It will "click" into place.
- **How do I get everything back in the bag?** The trick is to take your time and remove all the air. Use the weight of the poles to roll the tent on the ground and force air out. The tent components fit in the bag, it's the air that doesn't.
- **What is the air intake?** The air intake is a ground vent, designed to help with air flow throughout the tent, keep the tent cooler in warm weather, and prevent condensation. It can be cinched shut in colder weather.
NOTE: On the inside of the tent, adjust the cord lock on the ground vent guyline to close the vent.
- **How to clean the tent?** Clean the tent with a soft sponge, a mild soap and tepid water. Be sure to scrub gently and remove all soap. Let dry in sunlight, which also naturally cleans the tent.
- **What is the wall plug symbol?** That is a port for an electrical cord to access your tent. The electrical cord can be used on a campsite with power or with a generator outside your tent. It closes fully when not in use.
- **Can the tent be used in the rain?** Absolutely. The tent and rainfly have a waterproof treatment, and the seams have been sealed with waterproof tape at the factory.
- **How many seasons is this tent?** This is a three-season tent, recommended for use during spring, summer and fall.
- **What are the dimensions of the tent?** The tent is 18' x 10' x 80" (549 cm x 305 cm x 203 cm).

WARNINGS & CAUTIONS:

⚠ WARNING: KEEP ALL FLAME AND HEAT SOURCES AWAY FROM THIS TENT FABRIC

This tent is made of flame-resistant fabric which meets CPAI-84 specifications. **IT IS NOT FIRE-PROOF.** The fabric will burn if left in continuous contact with any flame source. The application of any foreign substance to the product fabric may render the flame-resistant properties ineffective.

DO NOT use fuel burning devices inside or near tent materials.

DO NOT permit children to light matches, operate burning appliances, or handle any flame sources in or near the tent.

- Do not smoke, use matches, candles or open flames of any kind in or near the tent.
- Do not refuel lanterns, stoves or heaters inside tent.
- Do not cook inside tent.
- Do not store flammable liquids inside tent.

⚠ WARNING: Keep clear of overhead power lines.

- Do not set up your tent under trees because of potential lightning strikes or falling tree limbs in inclement weather.
- For best results in windy conditions, position narrow end of tent into the wind.
- Secure with all stakes and guylines provided to prevent property damage or personal injury.
- Under certain conditions (cold weather, high humidity, etc.) condensation will form on the inside of your tent. Condensation is caused by water vapor from your breath, perspiration, or any wet clothing inside the tent. It is NOT LEAKAGE through the tent fabric. It can be minimized by removing wet clothing from your tent and by providing good ventilation through the tent.
- Never store tent, even for a short period of time, without drying it thoroughly and brushing off caked dirt. Do not pack stakes inside your tent. Use a separate storage bag.
- **STAKES SHOULD BE REMOVED BY PULLING ON THE STAKE ITSELF. NEVER PULL ON THE TENT TO REMOVE STAKE.**
- Do not leave your tent set-up for weeks at a time. Be aware that exposure to ultraviolet rays from the sun can seriously damage material and/or cause it to become discolored.



IMPORTANT:

THE ORIGINAL FIRE RETARDANT AND WATER REPELLENT PROTECTIVE COATINGS MAY BE COMPROMISED IF SPRAYS OR OTHER CHEMICAL TREATMENTS ARE USED ON THE SHELTER. FABRIC HAS BEEN FACTORY TREATED. IT IS HIGHLY WATER-REPELLANT; HOWEVER, IT IS NOT WATER PROOF. ALL SHELTERS CAN EXPERIENCE SEAM LEAKAGE DURING WET WEATHER. IF YOU WANT ADDITIONAL MOISTURE PROTECTION, TRY A SEAM SEALING COMPOUND ONLY; STRICTLY FOLLOW THE MANUFACTURER'S DIRECTIONS. IT IS RECOMMENDED THAT YOU SEAL THE SHELTER DURING THE INITIAL SETUP AS WELL AS PRIOR TO EACH CAMPING SEASON. SEAM SEALER COMPOUNDS CAN BE PURCHASED AT YOUR LOCAL CAMPING PRODUCTS OUTLET. FOR MISSING PARTS CALL 1-888-775-5628.

PLEASE DO NOT RETURN THIS PRODUCT TO THE RETAIL STORE.

1-YEAR LIMITED WARRANTY:

CORE® Equipment and Elevate LLC warrants for a period of 1 (one) year from the original date of purchase, this product against any defects in materials or workmanship. At its discretion, CORE® Equipment may provide replacement parts to original purchaser. Original receipt or proof of purchase as well as proof of defect in the form of a photograph or video is required. CORE® Equipment will not be responsible for shipping costs incurred outside the continental USA. Warranty is valid for the original purchaser one year from the date of purchase and is not transferable.

This Warranty does not cover any product purchased through unauthorized dealers/distributors and/or unauthorized resellers on online auction websites. CORE uses approved and authorized distributors to furnish quality products, and CORE provides warranty coverage only on products purchased from those distributors. If the product was purchased from an unauthorized reseller, this warranty does not apply. Unauthorized resellers may sell products that are used, defective, counterfeit, or which may not be designed for use in that specific country. To determine whether the seller of a CORE® Equipment product is one that has been approved and authorized by Elevate LLC owner of the CORE® Equipment brand, please contact help@coreequipment.com or call customer service at 1-888-775-5628.

This 1-Year Limited Warranty does NOT cover normal wear and tear, abuse or misuse of this product including damage from inclement weather conditions, such as wind, rain, or hail. In case of inclement weather remove all valuables and persons and seek appropriate shelter. Under no circumstances will CORE® Equipment or Elevate LLC be liable or responsible for any incidental or consequential damages. This product is designed and intended for Recreational use only. Prolonged exposure to UV rays will cause any fabric to fade and deteriorate and is NOT covered by this 1-Year Limited Warranty. All replacement products or parts will assume the remaining warranty of the original product. This warranty gives you specific legal rights. You may also have other rights which vary from state to state. To Obtain Warranty Service: Call Toll Free 1-888-775-5628 for warranty service, repair parts, or product questions. Monday - Friday, 8:00 a.m. - 5:00 p.m. Central Time.

Elevate LLC
Overland Park, KS 66223

Made in Bangladesh • Printed in Bangladesh

New 10/17/19