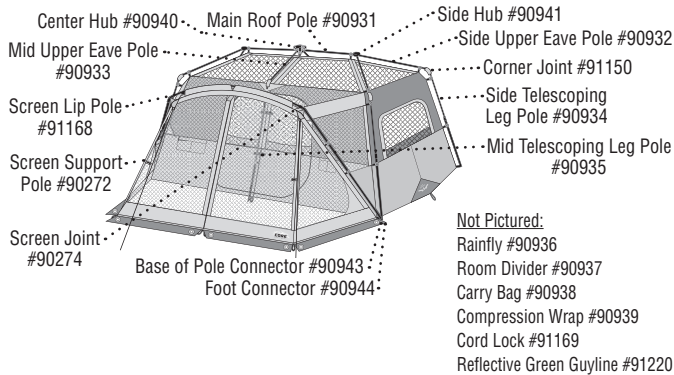


CORE® 10 PERSON INSTANT CABIN TENT WITH SCREEN ROOM - 14.5 x 14

Model No. 40036

Two people can easily setup this tent in just a few minutes.

Contents & Repair Parts:

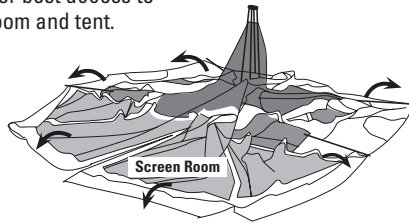


- 1** • Empty contents of bag and confirm all parts are included and undamaged.

NOTE: Do this at home before you leave on your trip.

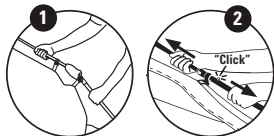
- Select a smooth level site and lay out your tent.
- Unfold LEG POLES and spread out tent.

NOTE: Position screen room in the direction you choose for best access to the screen room and tent.



2 Lift Tent

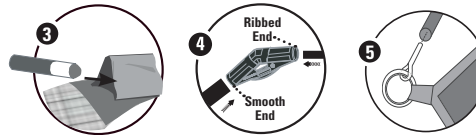
- Lift up on ARM JOINTS of the six tent LEG POLES. The tent will partially raise when ARM JOINTS are extended. **(Detail 1)**
- Extend tent telescoping LEG POLES until the LOCKING BUTTONS "click" into locked position. **(Detail 2)**



3 Set Up Screen Room

- Insert SCREEN LIP POLE into SLEEVE above door of screen room. **(Detail 3)**
- Insert each end of the SCREEN LIP POLE into ribbed end of both SCREEN JOINTS. **(Detail 4)**
- Insert end of SCREEN SUPPORT POLES into smooth end of the SCREEN JOINTS. **(Detail 4)**
- Insert bottom of SCREEN SUPPORT POLES into METAL PIN located at side of tent. **(Detail 5)**

NOTE: You can now easily move your tent to its final position before installing the rainfly and securing with stakes and guylines.



4 Stake Tent

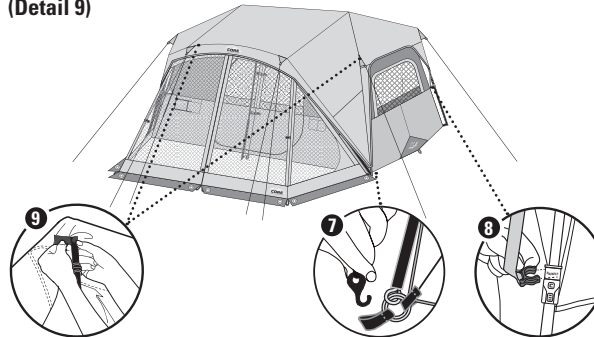
- To stake out the tent, drive STAKES through the PIN-RING assemblies or WEBBING LOOPS on the tent base and screen room base. **(Detail 6)**

NOTE: Floor of tent should be taut when staked properly.



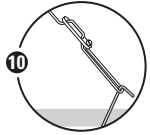
5 Attach Rainfly

- Drape RAINFLY over tent. **FRONT:** Connect S-HOOK on the RAINFLY into the PIN-RING **(Detail 7)**. **BACK:** Snap plastic clip attached to strap located at corner of rainfly onto the upper portion of the button box on leg pole labeled RAINFLY. **(Detail 8)**
- Locate HOOK AND LOOP FASTENERS on the underside of the RAINFLY and fasten to corresponding TENT & RAINFLY POLES. **(Detail 9)**



6 Stake Guylines

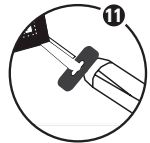
- To stabilize the tent, unroll the GUYLINES attached to the WEBBING LOOPS on the RAINFLY. Make a loop at the opposite end of the GUYLINE using the PLASTIC SLIDER and place the loop over the tent STAKE.
- Drive the STAKE into the ground to secure.
- Adjust the PLASTIC SLIDER to tighten the GUYLINE. Repeat for each GUYLINE. **(Detail 10)**



7 Install Room Divider

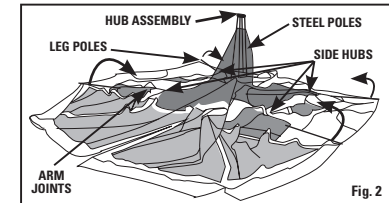
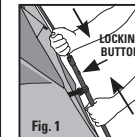
NOTE: The divider curtain provides extra privacy in your tent.

- To install it, attach divider's plastic toggles to corresponding loops on the wall inside the tent. **(Detail 11)**



TAKE DOWN INSTRUCTIONS:

- Remove ROOM DIVIDER.
- Remove STAKES and RAINFLY.
- Remove the SCREEN SUPPORT POLES & SCREEN LIP POLE.
- Remember to push the LOCKING BUTTON and telescope in all STEEL POLES to a closed position. (Fig. 1 & 2)
- Push down on the LEG POLES at the SIDE HUBS and fold up. (Fig. 2)
- Push down on ARM JOINTS and fold up STEEL LEG POLES.
- Rotate the 4 corners of tent up from the HUB ASSEMBLY. (Fig. 3)
- Lay the tent down on its side and roll out the excess air.
- Lay tent onto compression wrap and use straps to compress the tent down and put back into bag.



STORING THE TENT

- All stakes and screen room poles must be placed in their own storage bags before placing in tent carrying bag to prevent damage to the tent fabric.
- Store in a clean, dry area.

(continued on other side)

FREQUENTLY ASKED QUESTIONS:

- **Are replacement parts available?** Yes, just call Customer Service at 1-888-775-5628 for replacement parts. All parts can be replaced.
- **The center of the tent won't stand up.** You may have a broken corner joint. Check all six of the joints (under the fabric sleeves) and call Customer Service if you need a replacement.
- **The poles are not staying extended.** Check that all six locking buttons are popped out. Extend pole farther if button is not locked. It will "click" into place.
- **How do I get everything back in the bag?** The trick is to take your time and remove all the air. Use the weight of the poles to roll the tent on the ground and force air out. The tent components fit in the bag, it's the air that doesn't.
- **What is the air intake?** The air intake is a ground vent, designed to help with air flow throughout the tent, keep the tent cooler in warm weather, and prevent condensation. It can be cinched shut in colder weather.
NOTE: On the inside of the tent, adjust the cord lock on the ground vent guyline to close the vent.
- **What is the wall plug symbol?** That is a port for an electrical cord to access your tent. The electrical cord can be used on a campsite with power or with a generator outside your tent. It closes fully when not in use.
- **How to clean the tent?** Clean the tent with a soft sponge, a mild soap and tepid water. Be sure to scrub gently and remove all soap. Let dry in sunlight, which also naturally cleans the tent.
- **Can the tent be used in the rain?** Absolutely. The tent and rainfly have a waterproof treatment, and the seams have been sealed with waterproof tape at the factory.
- **How many seasons is this tent?** This is a 2-3 season tent, not recommended for use in severe weather conditions.
- **What are the dimensions of the tent?** The tent is 14.5' x 14' x 84" (442 cm x 427 cm x 213 cm).

WARNINGS & CAUTIONS:

⚠ WARNING: KEEP ALL FLAME AND HEAT SOURCES AWAY FROM THIS TENT FABRIC

This tent is made of flame-resistant fabric which meets CPAI-84 specifications. **IT IS NOT FIRE-PROOF.** The fabric will burn if left in continuous contact with any flame source. The application of any foreign substance to the product fabric may render the flame-resistant properties ineffective.

DO NOT use fuel burning devices inside or near tent materials.

DO NOT permit children to light matches, operate burning appliances, or handle any flame sources in or near the tent.

- Do not smoke, use matches, candles or open flames of any kind in or near the tent.
- Do not refuel lanterns, stoves or heaters inside tent.
- Do not cook inside tent.
- Do not store flammable liquids inside tent.

⚠ WARNING: Keep clear of overhead power lines.

- Do not set up your tent under trees because of potential lightning strikes or falling tree limbs in inclement weather.
- For best results in windy conditions, position narrow end of tent into the wind.
- Secure with all stakes and guylines provided to prevent property damage or personal injury.
- Under certain conditions (cold weather, high humidity, etc.) condensation will form on the inside of your tent. Condensation is caused by water vapor from your breath, perspiration, or any wet clothing inside the tent. It is NOT LEAKAGE through the tent fabric. It can be minimized by removing wet clothing from your tent and by providing good ventilation through the tent.
- Never store tent, even for a short period of time, without drying it thoroughly and brushing off caked dirt. Do not pack stakes inside your tent. Use a separate storage bag.
- STAKES SHOULD BE REMOVED BY PULLING ON THE STAKE ITSELF. NEVER PULL ON THE TENT TO REMOVE STAKE.
- Do not leave your tent set-up for weeks at a time. Be aware that exposure to ultraviolet rays from the sun can seriously damage material and/or cause it to become discolored.



IMPORTANT:

THE ORIGINAL FIRE RETARDANT AND WATER REPELLENT PROTECTIVE COATINGS MAY BE COMPROMISED IF SPRAYS OR OTHER CHEMICAL TREATMENTS ARE USED ON THE TENT. FABRIC HAS BEEN FACTORY TREATED. IT IS HIGHLY WATER-REPELLANT; HOWEVER, IT IS NOT WATERPROOF. ALL TENTS CAN EXPERIENCE SEAM LEAKAGE DURING WET WEATHER. IF YOU WANT ADDITIONAL MOISTURE PROTECTION, TRY A SEAM SEALING COMPOUND ONLY; STRICTLY FOLLOW THE MANUFACTURER'S DIRECTIONS. IT IS RECOMMENDED THAT YOU SEAL THE TENT DURING THE INITIAL SETUP AS WELL AS PRIOR TO EACH CAMPING SEASON. SEAM SEALER COMPOUNDS CAN BE PURCHASED AT YOUR LOCAL CAMPING PRODUCTS OUTLET. FOR MISSING PARTS CALL 1-888-775-5628.

PLEASE DO NOT RETURN THIS PRODUCT TO THE RETAIL STORE.

1-YEAR LIMITED WARRANTY:

CORE® Equipment and Elevate LLC warrants for a period of 1 (one) year from the original date of purchase, this product against any defects in materials or workmanship. At its discretion, CORE® Equipment may provide replacement parts to original purchaser. Original receipt or proof of purchase as well as proof of defect in the form of a photograph or video is required. CORE® Equipment will not be responsible for shipping costs incurred outside the continental USA. Warranty is valid for the original purchaser one year from the date of purchase and is not transferable.

This Warranty does not cover any product purchased through unauthorized dealers/distributors and/or unauthorized resellers on online auction websites. CORE uses approved and authorized distributors to furnish quality products, and CORE provides warranty coverage only on products purchased from those distributors. If the product was purchased from an unauthorized reseller, this warranty does not apply. Unauthorized resellers may sell products that are used, defective, counterfeit, or which may not be designed for use in that specific country. To determine whether the seller of a CORE® Equipment product is one that has been approved and authorized by Elevate LLC owner of the CORE® Equipment brand, please contact help@coreequipment.com or call customer service at 1-888-775-5628.

This 1-Year Limited Warranty does NOT cover normal wear and tear, abuse or misuse of this product including damage from inclement weather conditions, such as wind, rain, or hail. In case of inclement weather remove all valuables and persons and seek appropriate shelter. Under no circumstances will CORE® Equipment or Elevate LLC be liable or responsible for any incidental or consequential damages. This product is designed and intended for Recreational use only. Prolonged exposure to UV rays will cause any fabric to fade and deteriorate and is NOT covered by this 1-Year Limited Warranty. All replacement products or parts will assume the remaining warranty of the original product. This warranty gives you specific legal rights. You may also have other rights which vary from state to state. To Obtain Warranty Service: Call Toll Free 1-888-775-5628 for warranty service, repair parts, or product questions. Monday - Friday, 8:00 a.m. - 5:00 p.m. Central Time.

Elevate LLC
Overland Park, KS 66223

Made in Bangladesh • Printed in Bangladesh

Revised 06/08/21